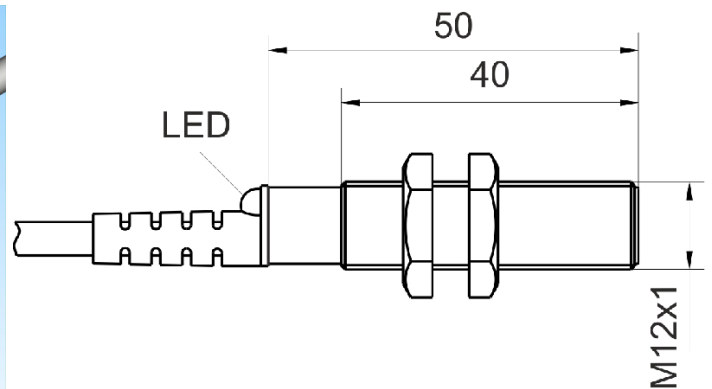
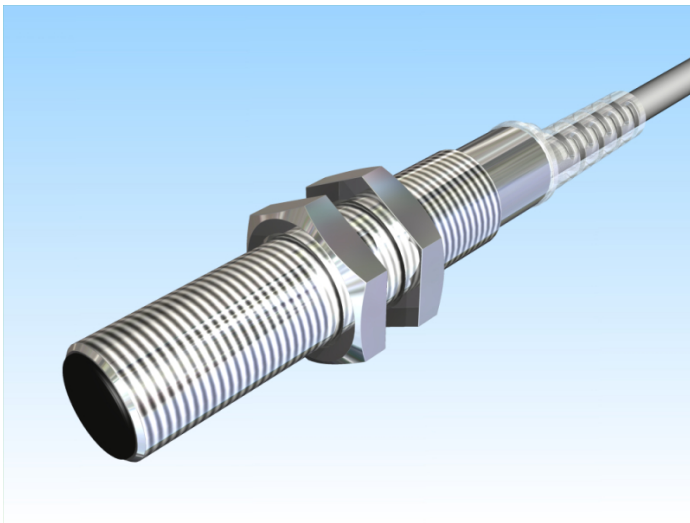


[Article Page](#)

Product Description

inductive sensor DC



Name
Order number
Switching distance
Mounting

KJ4-M12MB50-DNA
08310001904
4 mm

Switch type

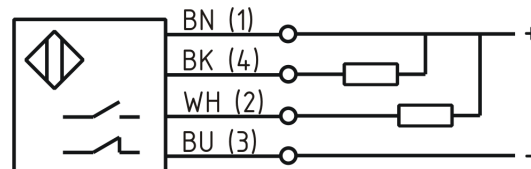
shielded

Signal Type
Connection

Changeover
DC NPN

Connection diagramm

Cable



fine-pitch thread M12 x 50

Dimension (in mm)
Technical Specification
Operating voltage
Max. ripple
Voltage drop
Max. load current
No load current
Leakage current
Switching frequency
Switching hysteresis
Operating temperature
Temperature drift
Repeat accuracy
Switching state
Time delay
Short-circuit proof
Overload protection
Reverse voltage protection
Protection category
EMC-level
Housing material
Material active face

10 - 30 VDC
≤ 10 %
2,4 V
200 mA
≤ 13 mA
≤ 10 μA
1000 Hz
≤ 15 %
-25 ° C to 70 ° C
≤ 10 %
≤ 5 %
LED
100 ms
yes
yes
yes
IP67
DIN EN 60947-5-2: 2008
Brass, nickel plated
Pocan KU 2-7503/1 + Batch RAL 9004



KJ4-M12MB50-DNA

Pulsotronic GmbH & Co. KG Neue Schichtstraße 14b 09366 Niederdorf Deutschland +49 (0)37296 930-200

Cable length	2 m
Utilisation category	DC 13
Cable material	PVC LIYY grau (grey)
Cable cross	4x0.34 mm ²
FIT / MTTF acc. to SIEMENS 29500	66,97 / 1705y

Errors and omissions exceptet

Mouser Electronics

Authorized Distributor

Click to View Pricing, Inventory, Delivery & Lifecycle Information:

[Altech:](#)

[08310001904](#)