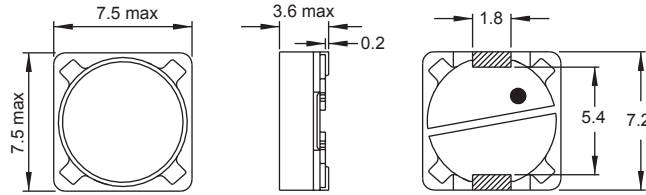
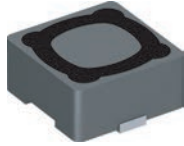
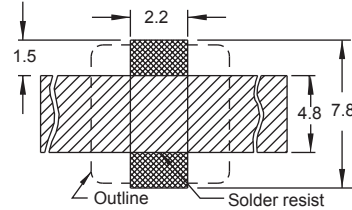


# PIS 2812

Shielded

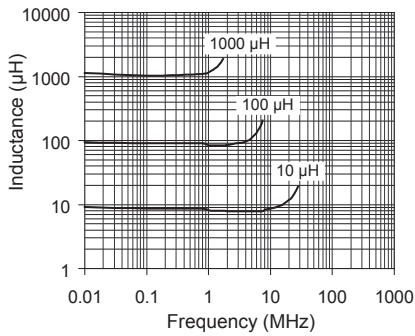


Recommended Layout for solder pads  
 \* In order to prevent short circuit, a solder resist is recommended

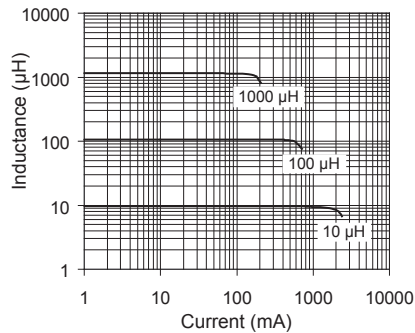


SMD Power Inductors

Typical Ls vs Frequency (f)



Typical Ls vs Current (I)



Part No	Inductance	f <sub>L</sub>	Tol	DCR	Rated DC
	L (µH)	(kHz)	± (%)	max (mΩ)	Current I (A)
PIS2812-1R0M-04	1.0	1	20	50	5.00
PIS2812-3R3M-04	3.3	1	20	70	3.00
PIS2812-5R6M-04	5.6	1	20	82	2.57
PIS2812-100M-04	10	1	20	80	1.68
PIS2812-120M-04	12	1	20	98	1.52
PIS2812-150M-04	15	1	20	130	1.33
PIS2812-180M-04	18	1	20	140	1.20
PIS2812-220M-04	22	1	20	190	1.07
PIS2812-270M-04	27	1	20	210	0.96
PIS2812-330M-04	33	1	20	240	0.91
PIS2812-390M-04	39	1	20	320	0.77
PIS2812-470M-04	47	1	20	360	0.76
PIS2812-560M-04	56	1	20	470	0.68
PIS2812-680M-04	68	1	20	520	0.61
PIS2812-820M-04	82	1	20	690	0.57
PIS2812-101M-04	100	1	20	790	0.50
PIS2812-121M-04	120	1	20	890	0.49
PIS2812-151M-04	150	1	20	1270	0.43
PIS2812-181M-04	180	1	20	1450	0.39
PIS2812-221M-04	220	1	20	1650	0.35
PIS2812-271M-04	270	1	20	2310	0.32
PIS2812-331M-04	330	1	20	2620	0.28
PIS2812-391M-04	390	1	20	2940	0.26
PIS2812-471M-04	470	1	20	4180	0.24
PIS2812-561M-04	560	1	20	4670	0.22
PIS2812-681M-04	680	1	20	5730	0.19
PIS2812-821M-04	820	1	20	6540	0.18
PIS2812-102M-04	1000	1	20	9440	0.16

Material : Ferrite

Revision date : 28 Aug 2013

SPQ : Reel 1200 [-04]

Remarks : - Additional gluing to PCB board is recommended.  
 - I - see description in Inductors Technical Data.

# Mouser Electronics

Authorized Distributor

Click to View Pricing, Inventory, Delivery & Lifecycle Information:

## Fastron:

[PIS2812-390M-04](#) [PIS2812-330M-04](#) [PIS2812-150M-04](#) [PIS2812-271M-04](#) [PIS2812-102M-04](#) [PIS2812-391M-04](#)  
[PIS2812-220M-04](#) [PIS2812-100M-04](#) [PIS2812-1R0M-04](#) [PIS2812-681M-04](#) [PIS2812-561M-04](#) [PIS2812-821M-04](#)  
[PIS2812-3R3M-04](#) [PIS2812-471M-04](#) [PIS2812-151M-04](#) [PIS2812-180M-04](#) [PIS2812-221M-04](#) [PIS2812-121M-04](#)  
[PIS2812-181M-04](#) [PIS2812-270M-04](#) [PIS2812-331M-04](#) [PIS2812-820M-04](#) [PIS2812-560M-04](#) [PIS2812-470M-04](#)  
[PIS2812-5R6M-04](#) [PIS2812-101M-04](#) [PIS2812-120M-04](#) [PIS2812-680M-04](#)