

A2D-R & A6D-R

Time Delay/Class RK1

UL/CSA LISTED POWER FUSES

UPGRADE YESTERDAY'S CIRCUITS TO
TODAY'S TYPE 2 PROTECTION



The Amp-Trap 2000® A2D-R and A6D-R fuses provide IEC Type 2 No Damage protection to main, feeder, and branch circuits for all types of loads. With time-delay characteristics for handling harmless inrush currents, current-limiting ability and a wide range of ratings (from 1 to 600 Amperes), A2D-R and A6D-R fuses give excellent protection for all your applications.

FEATURES/BENEFITS:

- Non-indicating or solid state SmartSpot® visual blown fuse indicator
- Time-delay for motor starting and transformer inrush currents without nuisance opening
- 600VAC & 600VDC dual rated
- 300kA interrupting rating - self-certified, UL witnessed tests
- Extremely current-limiting for low peak let-thru current
- Recommended for Arc Flash energy reduction
- Easy 2-to-1 selectivity for prevention of nuisance shut downs and “black outs”
- Rejection-style design prevents replacement errors (when used with recommended fuse blocks)
- High-visibility orange label gives instant brand recognition
- Reduced inventory by taking the place of class RK5, K, and H fuses
- Metal-embossed date and catalog number for easier traceability and lasting identification
- Fiberglass body provides dimensional stability in harsh industrial settings

RATINGS:

A2D-R

Volts: 250VAC/DC

Amps: 1/10 to 600A (AC),
15 to 600A (DC)

IR: 200kA I.R. AC,
100kA I.R. DC

A6D-R

Volts: 600VAC/DC

Amps: 1/10 to 600A

IR: 200kA I.R. AC, 100kA I.R.
DC (Self-certified for 300kA
I.R., UL witnessed.)

APPLICATIONS:

- Motors
- Safety switches
- Transformers
- Branch circuit protection
- Disconnects
- Control panels
- All general-purpose circuits

Note: See motor fuse applications tables on page P7

APPROVALS:

- UL listed to standard 248-12 File E2137
- DC listed to UL standard 248
- CSA certified to standard C22.2 No. 248.12



CATALOG NUMBERS (AMPS)

| 1-7A: Non-indicating only; SmartSpot visual indicator not available. No N suffix is needed. | | | 8-600A: Non-indicating and SmartSpot versions available | | |
|--|------------|------------|---|---------|---------|
| <i>For non-indicating, add suffix 'N' to catalog number. Ex.: A2D30R (indicating); A2D30RN (non-indicating).</i> | | | | | |
| 250V | | | | | |
| A2D1/10R | A2D1-4/10R | A2D4-1/2R | A2D8R | A2D45R | A2D175R |
| A2D15/100R | A2D1-6/10R | A2D5R | A2D9R | A2D50R | A2D200R |
| A2D2/10R | A2D1-8/10R | A2D5-6/10R | A2D10R | A2D60R | A2D225R |
| A2D3/10R | A2D2R | A2D6R | A2D12R | A2D70R | A2D250R |
| A2D4/10R | A2D2-1/4R | A2D6-1/4R | A2D15R | A2D75R | A2D300R |
| A2D1/2R | A2D2-1/2R | A2D7R | A2D17-1/2R | A2D80R | A2D350R |
| A2D6/10R | A2D2-8/10R | | A2D20R | A2D90R | A2D400R |
| A2D8/10R | A2D3R | | A2D25R | A2D100R | A2D450R |
| A2D1R | A2D3-2/10R | | A2D30R | A2D110R | A2D500R |
| A2D1-1/8R | A2D3-1/2R | | A2D35R | A2D125R | A2D600R |
| A2D1-1/4R | A2D4R | | A2D40R | A2D150R | |
| 600V | | | | | |
| A6D1/10R | A6D1-4/10R | A6D4-1/2R | A6D8R | A6D45R | A6D175R |
| A6D15/100R | A6D1-6/10R | A6D5R | A6D9R | A6D50R | A6D200R |
| A6D2/10R | A6D1-8/10R | A6D5-6/10R | A6D10R | A6D60R | A6D225R |
| A6D3/10R | A6D2R | A6D6R | A6D12R | A6D70R | A6D250R |
| A6D4/10R | A6D2-1/4R | A6D6-1/4R | A6D15R | - | A6D300R |
| A6D1/2R | A6D2-1/2R | A6D7R | A6D17-1/2R | A6D80R | A6D350R |
| A6D6/10R | A6D2-8/10R | | A6D20R | A6D90R | A6D400R |
| A6D8/10R | A6D3R | | A6D25R | A6D100R | A6D450R |
| A6D1R | A6D3-2/10R | | A6D30R | A6D110R | A6D500R |
| A6D1-1/8R | A6D3-1/2R | | A6D35R | A6D125R | A6D600R |
| A6D1-1/4R | A6D4R | | A6D40R | A6D150R | |

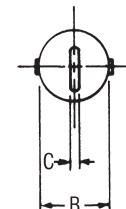
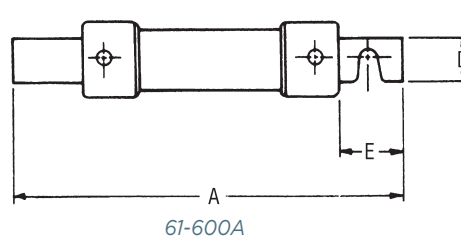
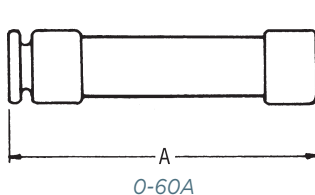
RECOMMENDED
FUSE BLOCKS WITH
BOX CONNECTORS FOR
AMP-TRAP® CLASS RK1
FUSES

| Fuse Ampere Rating | Catalog Number | | | |
|--------------------|----------------|--------|--------------|--------|
| | 250V or Less | | 600V or Less | |
| | 1 Pole | 3 Pole | 1 Pole | 3 Pole |
| 0-30 | 20306R | 20308R | 60306R | 60308R |
| 31-60 | 20606R | 20608R | 60606R | 60608R |
| 61-100 | 21036R | 21038R | 61036R | 61038R |
| 101-200 | 22001R | 22003R | 62001R | 62003R |
| 201-400 | 24001R | 24003R | 64001R | 64003R |
| 401-600 | 2631R | 2633R | 6631R | 6633R |

A variety of pole configurations and termination provisions are available. Refer to Section FB for details.

DIMENSIONS

| Ampere Rating | A | | B | | C | | D | | E | |
|---------------|--------|-----|---------|----|------|----|-------|----|-------|----|
| | In | mm | In | mm | In | mm | In | mm | In | mm |
| 250V-A2D | | | | | | | | | | |
| 0-30 | 2 | 51 | 9/16 | 14 | - | - | - | - | - | - |
| 31-60 | 3 | 76 | 13/16 | 21 | - | - | - | - | - | - |
| 61-100 | 5-7/8 | 149 | 1-1/16 | 27 | 1/8 | 3 | 3/4 | 19 | 1 | 25 |
| 101-200 | 7-1/8 | 181 | 1-9/16 | 40 | 3/16 | 5 | 1-1/8 | 28 | 1-3/8 | 35 |
| 201-400 | 8-5/8 | 219 | 2-1/16 | 53 | 1/4 | 6 | 1-5/8 | 41 | 1-7/8 | 48 |
| 401-600 | 10-3/8 | 264 | 2-9/16 | 66 | 1/4 | 6 | 2 | 51 | 2-1/4 | 57 |
| 600V-A6D | | | | | | | | | | |
| 0-30 | 5 | 127 | 13/16 | 21 | - | - | - | - | - | - |
| 31-60 | 5-1/2 | 139 | 1-1/16 | 27 | - | - | - | - | - | - |
| 61-100 | 7-7/8 | 200 | 1-5/16 | 34 | 1/8 | 3 | 3/4 | 19 | 1 | 25 |
| 101-200 | 9-5/8 | 244 | 1-13/16 | 46 | 3/16 | 5 | 1-1/8 | 28 | 1-3/8 | 35 |
| 201-400 | 11-5/8 | 295 | 2-9/16 | 66 | 1/4 | 6 | 1-5/8 | 41 | 1-7/8 | 48 |
| 401-600 | 13-3/8 | 340 | 3-1/8 | 80 | 1/4 | 6 | 2 | 51 | 2-1/4 | 57 |



Mouser Electronics

Authorized Distributor

Click to View Pricing, Inventory, Delivery & Lifecycle Information:

[Mersen:](#)

[A6D8R](#) [A6D150R](#) [A6D12R](#) [A6D600R](#) [A6D4R](#) [A6D45R](#) [A6D15R](#) [A6D5R](#) [A6D200R](#) [A6D400R](#) [A6D20R](#) [A6D40R](#)
[A6D500R](#) [A6D7R](#) [A6D70R](#) [A6D225R](#) [A6D10R](#) [A6D250R](#) [A6D110R](#) [A6D60R](#) [A6D90R](#) [A6D350R](#) [A6D17-1/2R](#)
[A6D300R](#) [A6D125R](#) [A6D6R](#) [A6D3R](#) [A6D35R](#) [A6D2R](#) [A6D80R](#) [A6D30R](#) [A6D50R](#) [A6D25R](#) [A6D175R](#) [A6D100R](#)