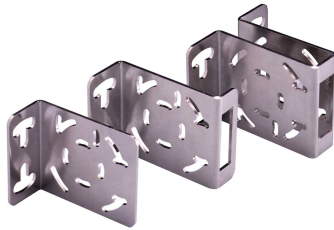


SMB46 Mounting Brackets



Datasheet

Stainless steel mounting brackets for Banner Sensors



- Rugged stainless steel mounting brackets available in three styles:
 - Basic right angle L-bracket
 - S-bracket offering lens protection
 - U-shaped hat bracket offering protections for all sides of sensor
- Mounting hole pattern accommodates the following sensors:
 - MINI-BEAM®
 - PicoDot™
 - Q14
 - Q23
 - QH23
 - QM42

Hardware List

The hardware packet (included) contains two each of the following for all SMB46 brackets:

For sensor mounting:	M3 × 0.5 × 20 mm screw	M3 × 0.5 hex nut	M3 flat washer	M3 split lock washer
For bracket mounting:	M6 × 1.0 × 12 mm screw	M6 × 1.0 hex nut	M6 flat washer	M6 split lock washer

Brackets

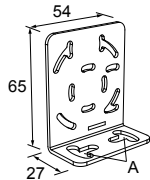
All measurements are listed in millimeters, unless noted otherwise.

SMB46L

- Right-angle
- L bracket
- 14-ga. 316 stainless steel

Hole center spacing: A = 16.0

Hole size: A = 16.5 × 18.7



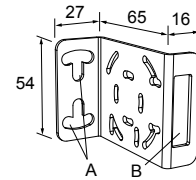
Part Number: 48747

SMB46S

- Right-angle
- S bracket
- 14-ga. 316 stainless steel

Hole center spacing: A = 16.0

Hole size: A = 16.5 × 18.7, B = 34.0 × 10.0



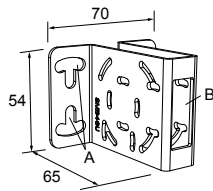
Part Number: 48748

SMB46U

- Right-angle
- U bracket for sensor protection
- 14-ga. 316 stainless steel

Hole center spacing: A = 16.0

Hole size: A = 16.5 × 18.7, B = 34.0 × 13.0



Part Number: 48746



Mounting Options

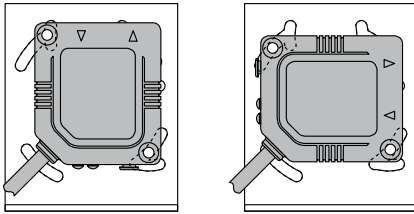


Figure 1. PicoDot™ Mounting Options

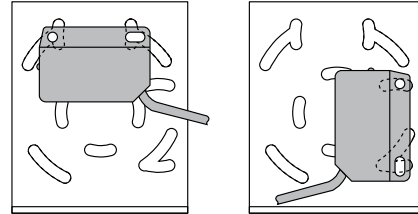


Figure 2. Q23 Mounting Options

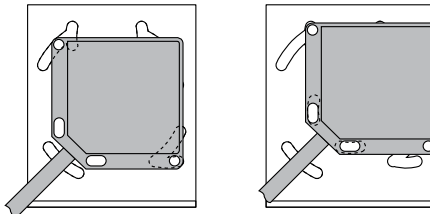


Figure 3. QM42 Mounting Options

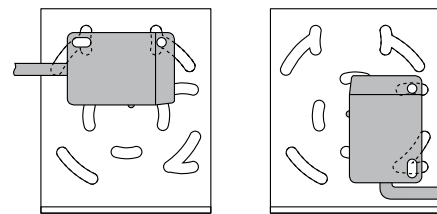


Figure 4. QH23 Mounting Options

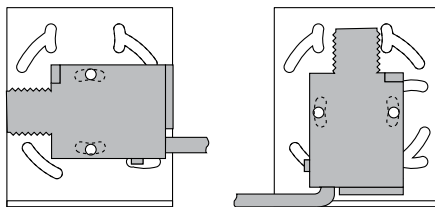


Figure 5. MINI-BEAM® Mounting Options

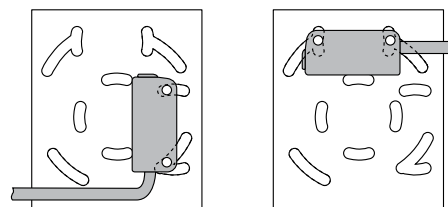


Figure 6. Q14 Mounting Options

Banner Engineering Corp Limited Warranty

Banner Engineering Corp. warrants its products to be free from defects in material and workmanship for one year following the date of shipment. Banner Engineering Corp. will repair or replace, free of charge, any product of its manufacture which, at the time it is returned to the factory, is found to have been defective during the warranty period. This warranty does not cover damage or liability for misuse, abuse, or the improper application or installation of the Banner product.

THIS LIMITED WARRANTY IS EXCLUSIVE AND IN LIEU OF ALL OTHER WARRANTIES WHETHER EXPRESS OR IMPLIED (INCLUDING, WITHOUT LIMITATION, ANY WARRANTY OF MERCHANTABILITY OR FITNESS FOR A PARTICULAR PURPOSE), AND WHETHER ARISING UNDER COURSE OF PERFORMANCE, COURSE OF DEALING OR TRADE USAGE.

This Warranty is exclusive and limited to repair or, at the discretion of Banner Engineering Corp., replacement. **IN NO EVENT SHALL BANNER ENGINEERING CORP. BE LIABLE TO BUYER OR ANY OTHER PERSON OR ENTITY FOR ANY EXTRA COSTS, EXPENSES, LOSSES, LOSS OF PROFITS, OR ANY INCIDENTAL, CONSEQUENTIAL OR SPECIAL DAMAGES RESULTING FROM ANY PRODUCT DEFECT OR FROM THE USE OR INABILITY TO USE THE PRODUCT, WHETHER ARISING IN CONTRACT OR WARRANTY, STATUTE, TORT, STRICT LIABILITY, NEGLIGENCE, OR OTHERWISE.**

Banner Engineering Corp. reserves the right to change, modify or improve the design of the product without assuming any obligations or liabilities relating to any product previously manufactured by Banner Engineering Corp. Any misuse, abuse, or improper application or installation of this product or use of the product for personal protection applications when the product is identified as not intended for such purposes will void the product warranty. Any modifications to this product without prior express approval by Banner Engineering Corp will void the product warranties. All specifications published in this document are subject to change; Banner reserves the right to modify product specifications or update documentation at any time. Specifications and product information in English supersedes that which is provided in any other language. For the most recent version of any documentation, refer to: www.bannerengineering.com.

For patent information, see www.bannerengineering.com/patents.

Mouser Electronics

Authorized Distributor

Click to View Pricing, Inventory, Delivery & Lifecycle Information:

[Banner Engineering:](#)

[SMB46L](#) [SMB46LQMT](#) [SMB46S](#) [SMB46U](#)