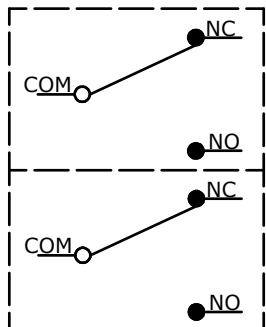
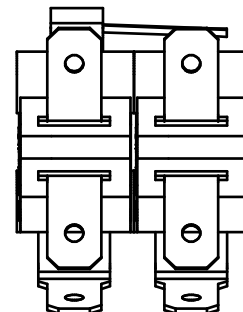
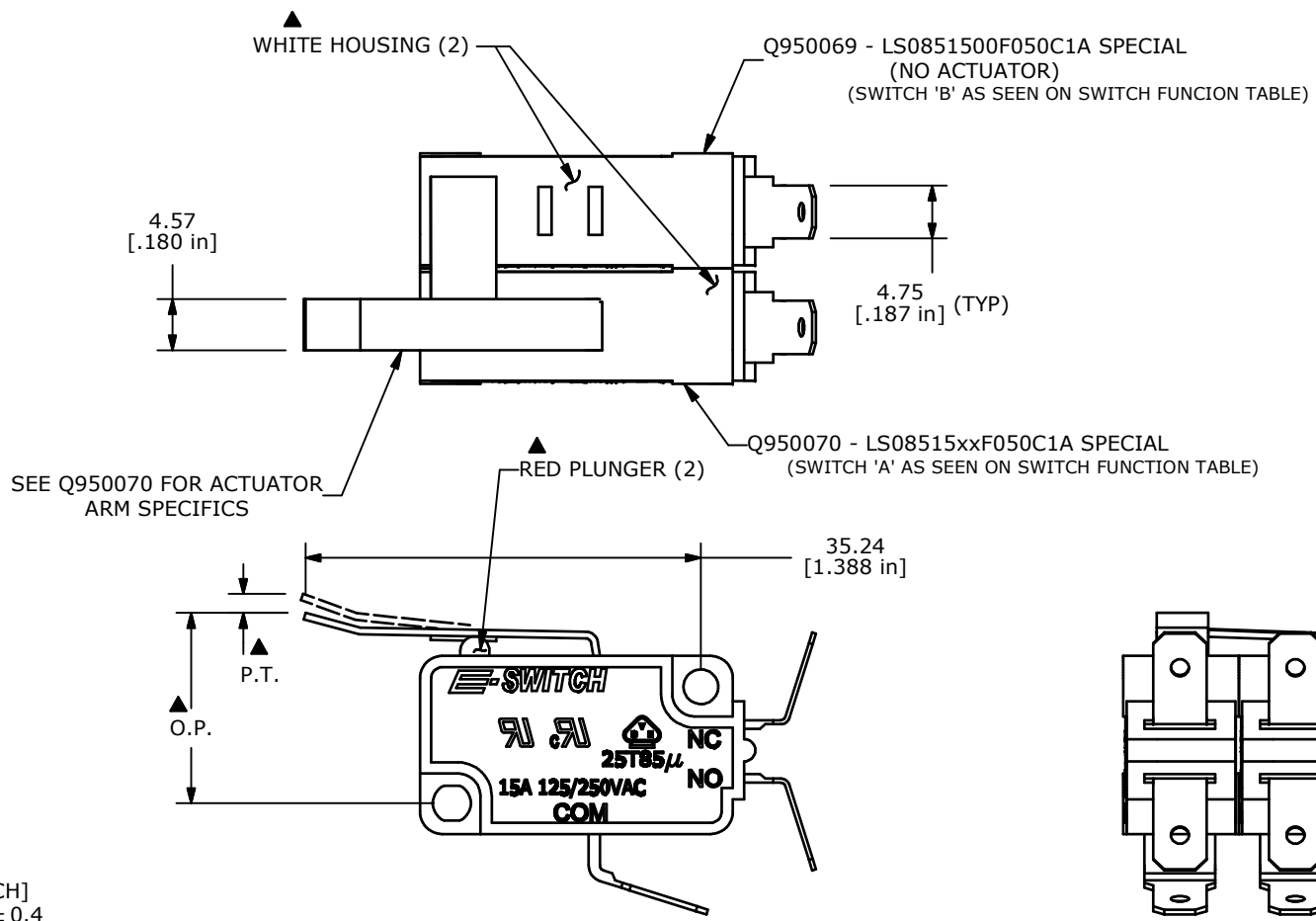


▲ SWITCH FUNCTION		
MEASURED AT SWITCH 'A'		
O.P.	16.65 +/- 0.65mm	
P.T.	2.90 +/- 0.40mm	

O.P. = OPERATING POINT
P.T. = PRE-TRAVEL



CIRCUIT: 2 SWITCHES
BOTH WITH SPDT
CONTACTS



NOTES:

- ALL DIMENSIONS IN MM [INCH]
- GENERAL TOLERANCE: X.X=± 0.4
X.XX=± 0.25
- RATING: 15A @125/250VAC UL, CUL, VDE APPROVED
- OPERATING FORCE: 55 ± 15 GRAMS
- OPERATING TEMP: -25°C TO 85°C
- ELECTRICAL LIFE: 50,000 CYCLES MIN.
- MECHANICAL LIFE: 1,000,000 CYCLES TYP.
- INSULATION RESISTANCE: 100 MEGA-OHMS MIN.
- DIELECTRIC STRENGTH: 1500VAC 1 MINUTE (INITIAL VALUE)
- CONTACT RESISTANCE: 100 MILLI -OHMS MAX.
- ▲ DENOTES CRITICAL PARAMETER.
- 2002/95/EC (ROHS) COMPLIANT.

- SEE ROUTING WORK INSTRUCTIONS FOR FIXTURING / ASSEMBLY DETAILS
- ADHESIVE: USE ONLY 'POWER POXY #21801' .005 OZ. PER ASSEMBLY (#Z100002).

REV	PCR NO	DESCRIPTION	DATE	BY
D	18976	OPERATING FORCE, O.P., P.T. ADDED	3/30/10	BLR
C	18653	Released For Production	10/6/09	BLR
B	n/a	TOOLING RELEASE - DWG CHANGES	5/27/09	BLR

THE INFORMATION CONTAINED IN THIS DOCUMENT IS PROPRIETARY TO E-SWITCH AND IS NOT TO BE COPIED OR TRANSFERRED

TITLE LS08515 SPEC. HAPP			
SCALE	DATE	DR	DWG
1.5:1	3/30/2010	BLR	XQ0041A
			REV D

Mouser Electronics

Authorized Distributor

Click to View Pricing, Inventory, Delivery & Lifecycle Information:

[E-Switch:](#)

[LS08515SPEC.HAPP](#)