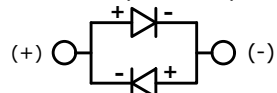


GREEN (FORWARD)



GREEN (REVERSE)

SCHEMATIC

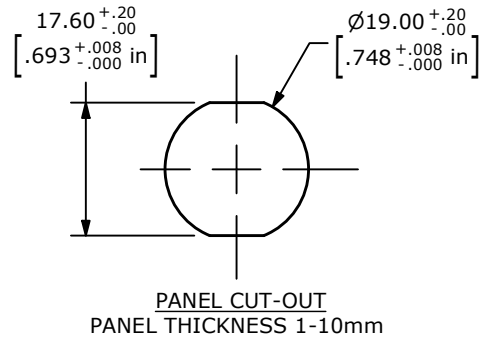
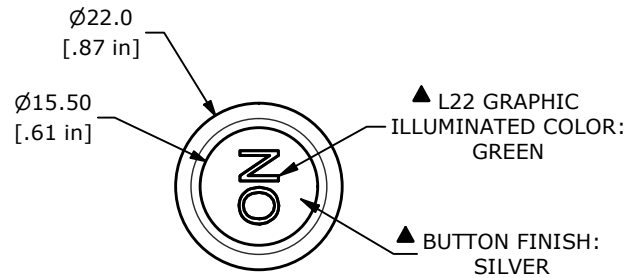
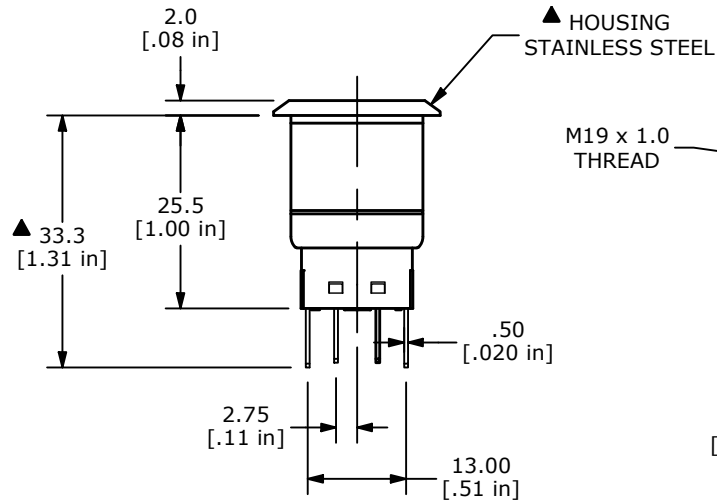
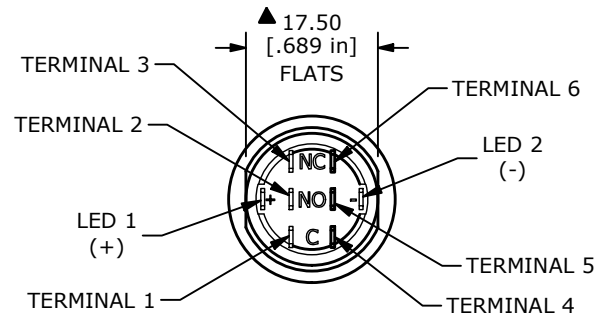
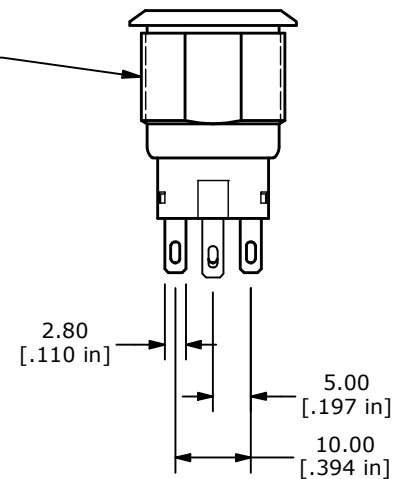
ON-(ON)

DPDT ILLUMINATED

( ) DENOTES MOMENTARY

## NOTE:

1. ALL DIMENSIONS IN MM [INCH]
2. GENERAL TOLERANCE: X.X =  $\pm 0.4$   
X.XX =  $\pm 0.25$
3. TERMINAL NUMBERS FOR REF ONLY
- ▲ 4. CONTACT MATERIAL: SILVER
5. RATING: 3A 250 VAC cUL
6. ELECTRIC LIFE: 50,000 MAKE-AND-BREAK CYCLES AT FULL LOAD.
7. MECHANICAL LIFE: 1,000,000 CYCLES.
8. INSULATION RESISTANCE: 1,000 M $\Omega$  @ 500VDC MIN.
9. DIELECTRIC STRENGTH: 2,000 VAC MIN. FOR 1 MINUTE
10. CONTACT RESISTANCE: 50m $\Omega$  MAX. @ 1A 12VDC
11. OPERATING TEMP.: -20°C to 55°C
12. ▲ DENOTES CRITICAL PARAMETER.
- ▲ 13. LAMP VOLTAGE: 20mA 220V
14. TRAVEL: 3.2mm
15. ACTUATION FORCE:  $3.5 \pm 1.0$  N
16. MOUNTING NUT TORQUE: 5-14 Nm
17. INGRESS PROTECTION: IP67, IK08
18. HARDWARE SUPPLIED: O-RING AND HEXNUT

PANEL CUT-OUT  
PANEL THICKNESS 1-10mm▲ L22 GRAPHIC  
ILLUMINATED COLOR:  
GREEN▲ BUTTON FINISH:  
SILVER▲ HOUSING  
STAINLESS STEELM19 x 1.0  
THREAD

REV	ECO NO	DESCRIPTION	DATE	BY	E-SWITCH®				OBJECT ID
A	ECO-100305	NEW RELEASE	09/27/21	MR	TITLE ULV4F2HSL37L22				100118256
					SCALE	DATE	DR	DWG	REV
					1:1	9/23/2021	MJR	T940405	A

THE INFORMATION CONTAINED IN THIS DOCUMENT IS PROPRIETARY TO  
E-SWITCH AND IS NOT TO BE COPIED OR TRANSFERRED

# Mouser Electronics

Authorized Distributor

Click to View Pricing, Inventory, Delivery & Lifecycle Information:

[E-Switch:](#)

[ULV4F2HSLL37L22](#)