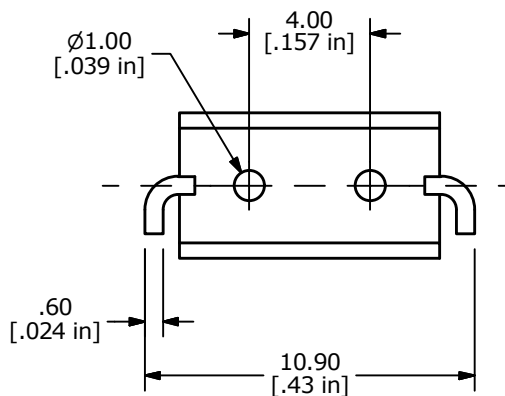
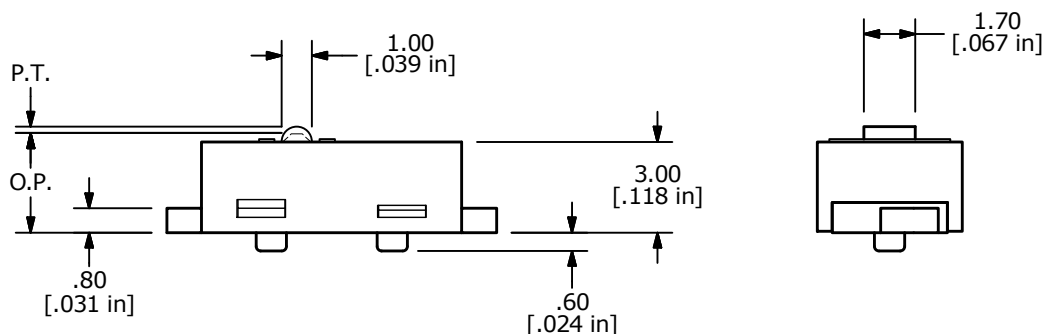
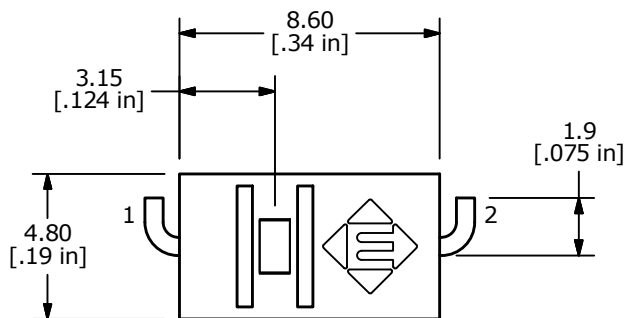


PCB LAYOUT



O.P. (MM)	P.T. (MM)
3.3 ±0.3	0.6 max

O.P. = OPERATING POINT  
P.T. = PRE-TRAVEL



CIRCUIT: SPST

NOTE:

1. ALL DIMENSIONS IN MM [INCH]
2. GENERAL TOLERANCE: X.X = ±0.4  
X.XX = ±0.25
3. TERMINAL NUMBERS FOR REF ONLY
4. PLATING MATERIAL: SILVER
5. RATING: 0.1A @125VAC or 48VDC
6. CONTACT RESISTANCE: 300m OHMS MAX.
7. MECHANICAL LIFE: 3,000,000 CYCLES
8. ELECTRIC LIFE: 3,000,000 MAKE-AND-BREAK CYCLES
9. INSULATION RESISTANCE: 100 MEGA-OHM MIN @ 500VDC.
10. DIELECTRIC STRENGTH: 1,000 V FOR 1 MIN.
11. OPERATING TEMP.: -25°C to 85°C
- ▲ 12. OPERATING FORCE: 70 ±20gf
13. ▲ DENOTES CRITICAL PARAMETER.
14. PACKAGING: TAPE & REEL, 1200 PIECES PER REEL.

REV	PCR NO	DESCRIPTION	DATE	BY
C	23924	show O.P. and P.T.	6/11/19	MW
B	20022	PACKAGING was 1000 PCS / REEL	6/22/11	BGL
A	18412	New Release	2/18/09	rc



TITLE TS20100F070S				
SCALE	DATE	DR	DWG	REV
4 : 1	11/24/2008	rc	Q930000	C

THE INFORMATION CONTAINED IN THIS DOCUMENT IS PROPRIETARY TO E-SWITCH AND IS NOT TO BE COPIED OR TRANSFERRED

# Mouser Electronics

Authorized Distributor

Click to View Pricing, Inventory, Delivery & Lifecycle Information:

[E-Switch:](#)

[TS20100F070S](#)