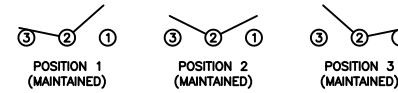


## SCHEMATIC



## SPECIFICATIONS

FUNCTION:  
1P2T ON-OFF-ON

RATINGS:  
ANSI/UL 1054 and CAN/CSA C22.2 No. 55 (E194579):  
16A 125VAC [UR, cUR]  
10A 250VAC [UR, cUR]  
1/3HP 125/250VAC [UR, cUR]

EN 61058-1:2002:  
10(4)A 250V~  $\mu$  1E4 T125/55 [ENEC14]  
10(2)A 250V~  $\mu$  5E4 T85/55 [ENEC14]

CONTACT RESISTANCE:  
Initial: 35m $\Omega$  Max. at 50VAC

INSULATION RESISTANCE:  
100M $\Omega$  Min. at 500VDC

DIELECTRIC STRENGTH:  
1,500VAC For 1 Minute

ELECTRICAL LIFE:  
6,000 Cycles [UR, cUR]  
10,000 Cycles [ENEC14: 10(4)A 250V~]  
50,000 Cycles [ENEC14: 10(2)A 250V~]

TEMPERATURE:  
Operating: -20°C to 105°C [UR, cUR]  
Operating: -20°C to 125°C [ENEC14: 10(4)A 250V~]  
Operating: -20°C to 85°C [ENEC14: 10(2)A 250V~]

## APPROVALS:

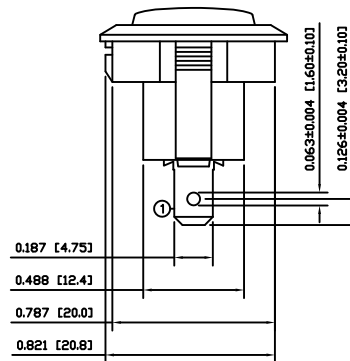
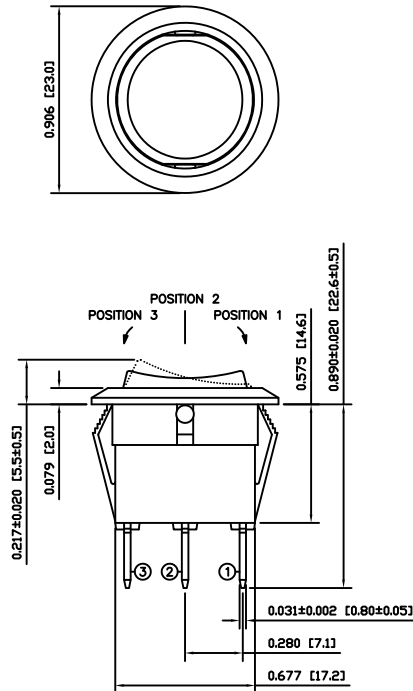


## COLORS AND MARKINGS

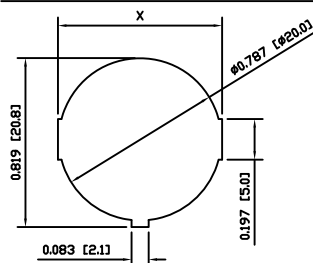
BODY:  
Black  
ACTUATOR:  
Black  
MARKINGS:  
None  
MARKING COLOR:  
None

## MATERIALS

BODY:  
Polyamide 6/6 (PA66), UL94 V-2  
ACTUATOR:  
Polyamide 6/6 (PA66), UL94 V-2  
SPRING:  
Steel  
SPRING COVER:  
Steel  
CONTACTS:  
Silver Alloy Plated Copper  
TERMINALS:  
Silver Plated Copper



## SUGGESTED PANEL CUTOUT



PANEL THICKNESS	X
0.030~0.049 [0.75~1.25]	0.795 [20.2]
0.049~0.079 [1.25~2.00]	0.803 [20.4]
0.079~0.118 [2.00~3.00]	0.811 [20.6]

ACTUATOR	A	09/08/10	CAB
BODY	B	10/03/31	CAB
COLORS	A	09/08/10	CAB
MATERIALS	A	09/08/10	CAB
SPECIFICATIONS	A	09/08/10	CAB
REFERENCE	REV.	DATE	BY

THE INFORMATION CONTAINED IN THIS DOCUMENT IS PROPRIETARY TO E-SWITCH-LAMB INDUSTRIES AND IS NOT TO BE COPIED OR TRANSFERRED

C	REMOVED SEMKO RATING	23442	07/12/18	MJR
B	correct Housing side view	22882	01/19/17	MW
A	INITIAL RELEASE	PCRD0051	09/08/11	CAB
REV.	DESCRIPTION	PCR	DATE	DRAWN BY

DIMENSIONS	INCHES [MILLIMETERS]
GENERAL TOLERANCES	±0.008 [±0.2] / ±1°
SCALE	DRAWING NOT TO SCALE



RR115C1100

ITEM NUMBER	DATE	REVISION
38-RR115C1100	MARCH 31, 2010	C

# Mouser Electronics

Authorized Distributor

Click to View Pricing, Inventory, Delivery & Lifecycle Information:

[E-Switch:](#)

[RR115C1100](#)