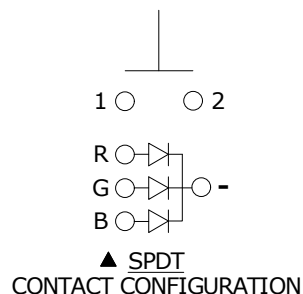


RECOMMENDED PANEL CUTOUT  
MAX. PANEL THICKNESS  
10.0mm [.315 in]

▲ SWITCH FUNCTION

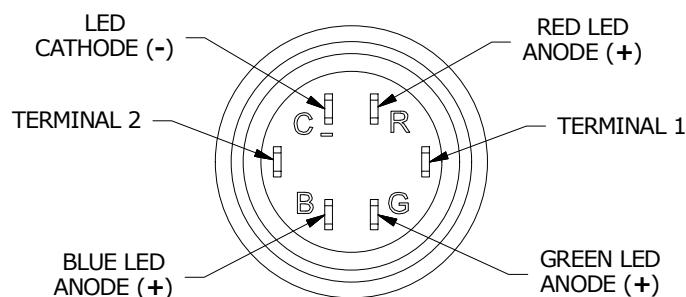
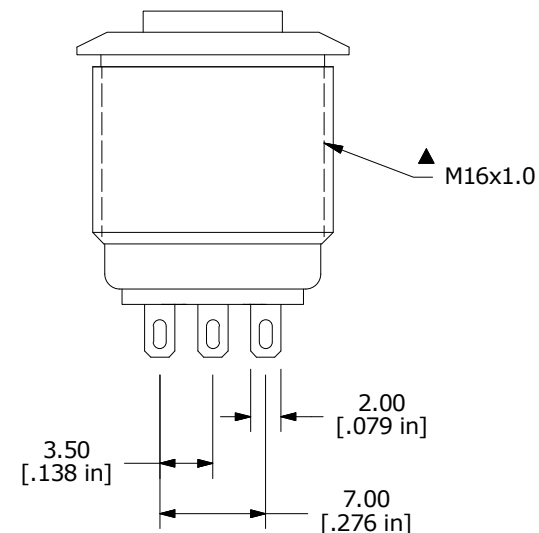
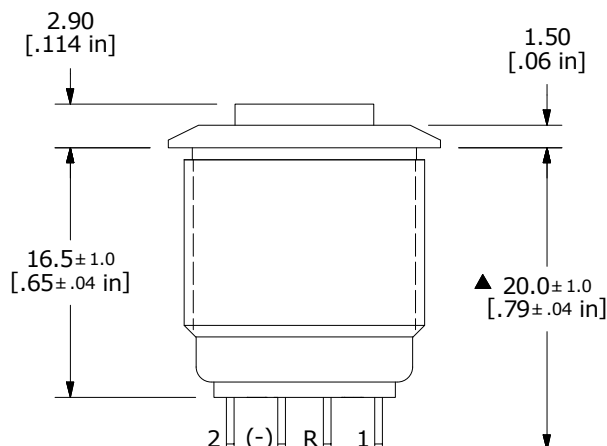
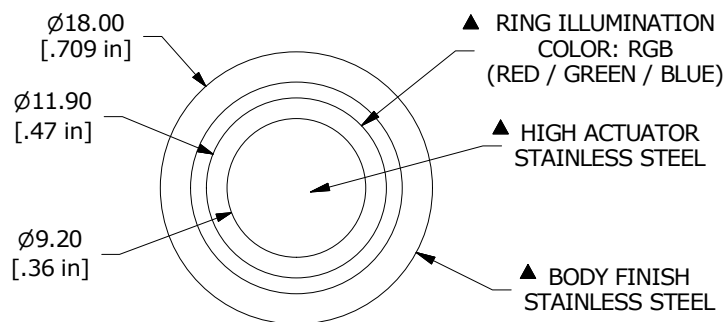
POS. 1	POS. 2
OFF	(ON)
OPEN	1-2

(ON) = MOMENTARY



## NOTE:

- ALL DIMENSIONS IN MM [INCH]
- GENERAL TOLERANCE: X.X =  $\pm 0.4$   
X.XX =  $\pm 0.25$
- TERMINAL NUMBERS FOR REF ONLY
- CONTACT MATERIAL: SILVER PLATED
- RATING: 2A 48VDC
- ELECTRIC LIFE: 200,000 MAKE-AND-BREAK CYCLES AT FULL LOAD.
- INSULATION RESISTANCE: 1,000 M $\Omega$  MIN.
- DIELECTRIC STRENGTH: 2,000 VAC MIN. FOR 1 MINUTE
- CONTACT RESISTANCE: 50m $\Omega$  MAX. @ 1A 12VDC
- OPERATING TEMP.: -20°C to 55°C
- TRAVEL: 1.8mm
- ▲ DENOTES CRITICAL PARAMETER.
- HARDWARE SUPPLIED: O-RING AND HEXNUT (NOT SHOWN)
- ILLUMINATION BASE RATING @ 20mA:  
RED- 1.8V  
GREEN - 2.8V  
BLUE - 2.8V
- 2011/65/EU (ROHS) COMPLIANT



B	22904	update with new RGB terminal base	6/15/17	MW
A	22121	RELEASE FOR PRODUCTION	1/13/16	rc
REV	PCR NO	DESCRIPTION	DATE	BY

THE INFORMATION CONTAINED IN THIS DOCUMENT IS PROPRIETARY  
TO E-SWITCH AND IS NOT TO BE COPIED OR TRANSFERRED

TITLE PV6H240SS-3R1

SCALE 2:1

DATE 1/12/2016

DR rc

DWG 52-PV6H240SS3R1

REV B

# Mouser Electronics

Authorized Distributor

Click to View Pricing, Inventory, Delivery & Lifecycle Information:

[E-Switch:](#)

[PV6H240SS-3R1](#)