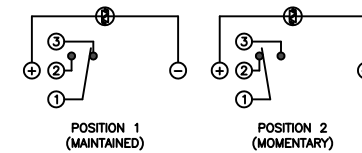


SCHEMATIC

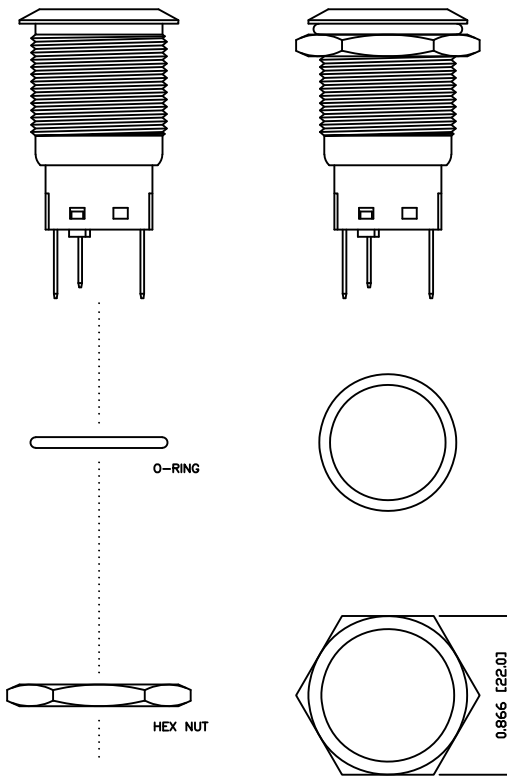
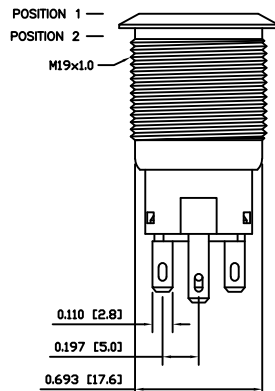
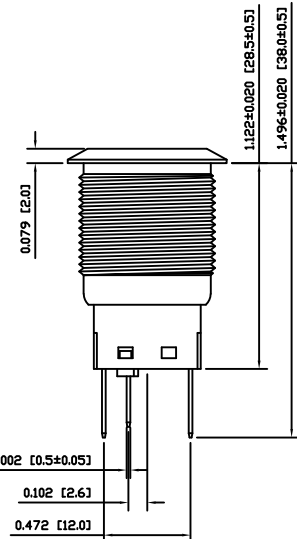


SPECIFICATIONS

- FUNCTION:**
1P2T ON-(ON)
- RATING:**
2A 24VDC
- ILLUMINATION VOLTAGE:**
2.8V 20mA
- CONTACT RESISTANCE:**
Initial: 50mΩ Max. at 1A 12VDC
- INSULATION RESISTANCE:**
1,000MΩ Min. at 500VDC
- DIELECTRIC STRENGTH:**
2,000VAC Min. for 1 Minute
- ELECTRICAL LIFE:**
50,000 Cycles
- MECHANICAL LIFE:**
1,000,000 Cycles
- TEMPERATURE:**
Operating: -20°C to 70°C
- INGRESS PROTECTION:**
IP65
- APPROVALS:**
RoHS
COMPLIANT

A

A



MATERIALS

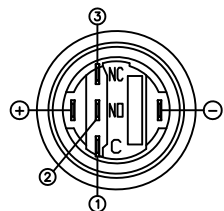
- BUSHING:**
Stainless Steel (304)
- BASE:**
Polycarbonate (PC)
Polybutylene Terephthalate (PBT), UL94 V-2
- ACTUATOR:**
Stainless Steel (304)
Polycarbonate (PC)
- HARDWARE:**
Nickel Plated Brass (H59)
- SEALING:**
Silicone Rubber
- INNER ASSEMBLY:**
Polyoxymethylene (POM)
Phosphor Bronze
- SPRING:**
Spring Steel
- CONTACTS:**
Silver/Cadmium Oxide (AgCdO)
- TERMINALS:**
Silver Plated Brass (H62)
Silver Plated Phosphor Bronze
- O-RING:**
Silicone Rubber

B

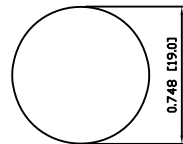
B

C

C



SUGGESTED PANEL CUTOUT



MAXIMUM PANEL THICKNESS: 0.433 [11.0mm]

EXPLODED VIEW

ASSEMBLED VIEW

D

D

| | | | |
|----------------|------|----------|-----|
| BODY | A | 09/07/24 | CAB |
| COLORS | A | 09/07/24 | CAB |
| MATERIALS | B | 09/10/16 | CAB |
| SPECIFICATIONS | A | 09/07/27 | CAB |
| REFERENCE | REV. | DATE | BY |

THE INFORMATION CONTAINED IN THIS DOCUMENT IS PROPRIETARY TO E-SWITCH AND IS NOT TO BE COPIED OR TRANSFERRED

| | | | | |
|------|------------------------------|-----------|----------|----------|
| B | UPDATED RATING TO 2A @ 24VDC | 23596 | 10/8/18 | MJR |
| A | INITIAL RELEASE | PCRO00170 | 09/10/21 | CAB |
| REV. | DESCRIPTION | PCR | DATE | DRAWN BY |

| | |
|----------------------|------------|
| DIMENSIONS | |
| INCHES [MILLIMETERS] | |
| GENERAL TOLERANCES | |
| ±0.008 [±0.2] / ±1' | |
| SCALE | PROJECTION |
| DRAWING NOT TO SCALE | 1:1 |

E-SWITCH

LAMB INDUSTRIES

PV4F2B0SS-331

| | | |
|-----------------|------------------|----------|
| DRAWING NUMBER | DATE | REVISION |
| 52-PV4F2B0SS331 | OCTOBER 21, 2009 | B |

Mouser Electronics

Authorized Distributor

Click to View Pricing, Inventory, Delivery & Lifecycle Information:

[E-Switch:](#)

[PV4F2B0SS-331](#)