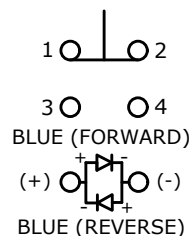


▲ SWITCH FUNCTION

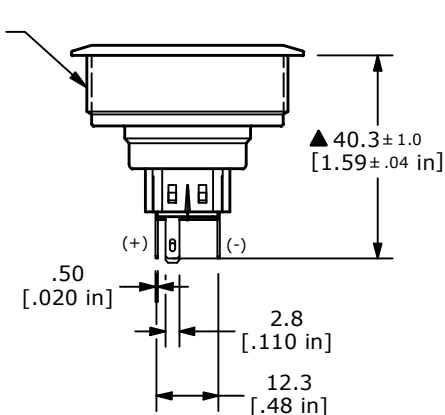
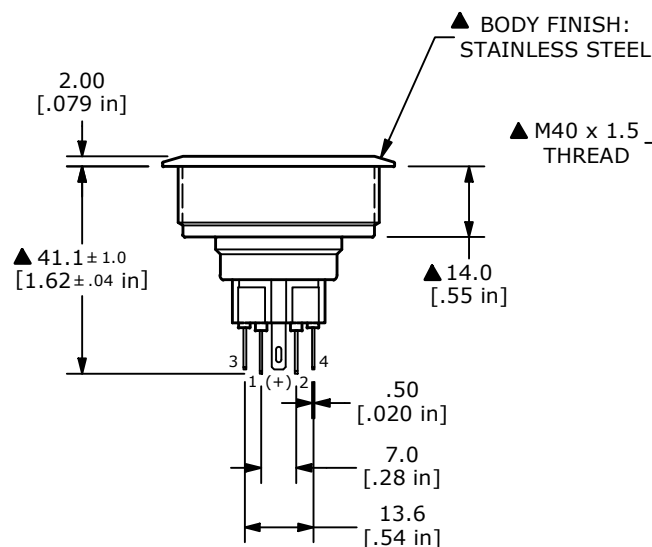
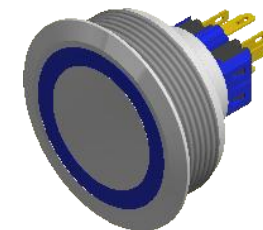
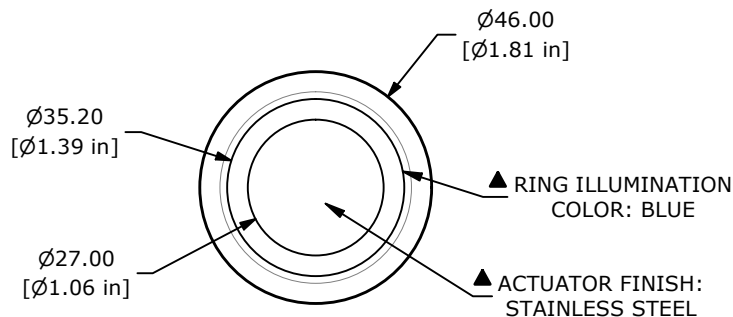
POS. 1	POS. 2
1-2 ON 3-4 OFF	1-2 OFF 3-4 ON



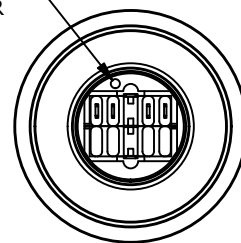
▲ SPDT ON-OFF / OFF-ON  
CONTACT CONFIGURATION

## NOTE:

1. ALL DIMENSIONS IN MM [INCH]
2. GENERAL TOLERANCE: X.X =  $\pm 0.4$   
X.XX =  $\pm 0.25$
3. TERMINAL NUMBERS FOR REF. ONLY
- ▲ 4. FUNCTION: SPDT
- ▲ 5. RATING: 2A @ 48VDC
6. CONTACT RESISTANCE: 50m $\Omega$  MAX. @ 1A 12VDC
7. INSULATION RESISTANCE: 1,000M $\Omega$  @ 500VDC
8. DIELECTRIC STRENGTH: 2,000VAC MIN. FOR 1 MINUTE
9. ELECTRICAL LIFE: 50,000 CYCLES
10. OPERATING TEMPERATURE: -20°C to 55°C
11. INGRESS PROTECTION: IP65
12. SUPPLIED HARDWARE: O-RING AND HEXNUT
13. ▲ DENOTES CRITICAL PARAMETER
- ▲ 14. ILLUMINATION VOLTAGE: 125V



DOT DENOTES  
LED COLOR



C	24607	HOUSING UPDATE	11/23/20	JM
B	23818	correct function to latching	3/22/19	MW
A	23779	NEW RELEASE	2/19/19	MW
REV	PCR NO	DESCRIPTION	DATE	BY

THE INFORMATION CONTAINED IN THIS DOCUMENT IS PROPRIETARY  
TO E-SWITCH AND IS NOT TO BE COPIED OR TRANSFERRED



TITLE PV10F2T0SS-346

SCALE 2:3	DATE 2/19/2019	DR MW	DWG 52-PV10F2T0SS346	REV C
--------------	-------------------	----------	-------------------------	----------

# Mouser Electronics

Authorized Distributor

Click to View Pricing, Inventory, Delivery & Lifecycle Information:

[E-Switch:](#)

[PV10F2T0SS-346](#)