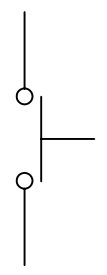
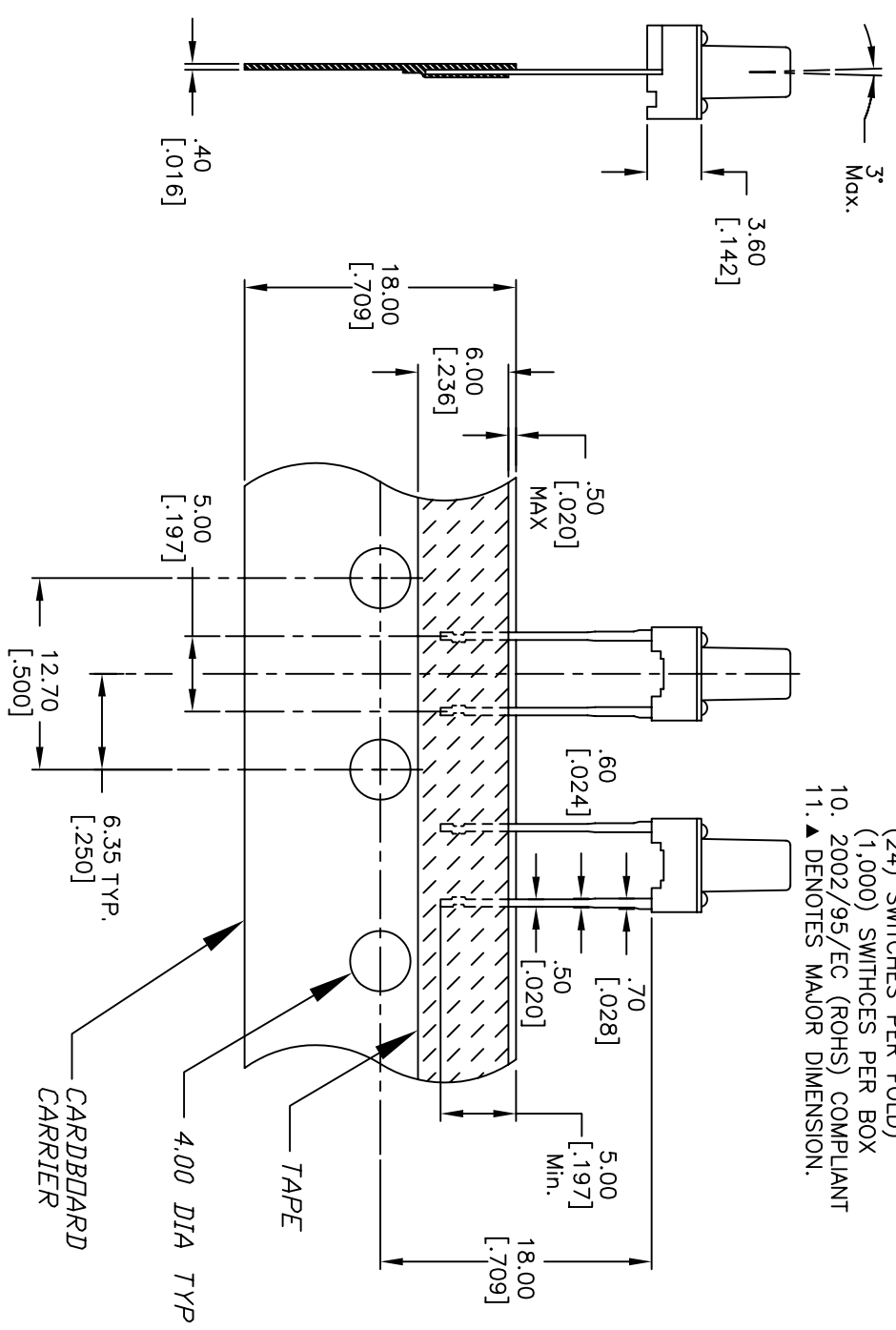


RECOMMENDED P.C.B. LAYOUT



CIRCUIT: SPST

- NOTES:
1. ALL DIMENSIONS IN MM [INCH]
  2. GENERAL TOLERANCE: X.X=±0.4 X.XX=±0.25
  3. CONTACT RATING: 50mA @12V DC
  4. CONTACT MATERIAL: SILVER
  5. OPERATING FORCE: 100±50gf
  6. TRAVEL: 0.25 +0.2/-0.1
  7. CONTACT RESISTANCE: 100mILLI Ohms max.
  8. ELECTRICAL LIFE: 100,000 CYCLES
  9. PACKAGING:  
CARRIER IS FOLDED EVERY 25 PITCHES (24) SWITCHES PER FOLD (1,000) SWITCHES PER BOX
  10. 2002/95/EC (ROHS) COMPLIANT
  11. ▲ DENOTES MAJOR DIMENSION.



B	16888	UPDATE NOTES, .30 DIM TO .25	1/18/2007	TN
A	11623	RELEASED FOR PRODUCTION	12/3/02	CB
REV.	ECN NO.	DESCRIPTION	DATE	CHKD
THE INFORMATION CONTAINED IN THIS DOCUMENT IS PROPRIETARY TO E-SWITCH AND IS NOT TO BE COPIED OR TRANSFERRED				

TITLE		DATE		DR	DWG	REV
E-SWITCH® TL59BF100Q		1/18/2007		TN	P010566	B
SCALE	2:1					

# Mouser Electronics

Authorized Distributor

Click to View Pricing, Inventory, Delivery & Lifecycle Information:

[E-Switch:](#)

[TL59BF100Q](#)