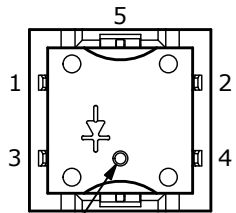
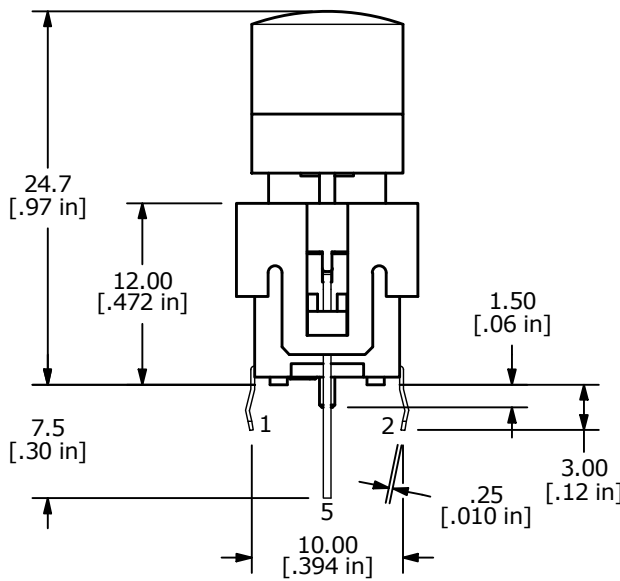
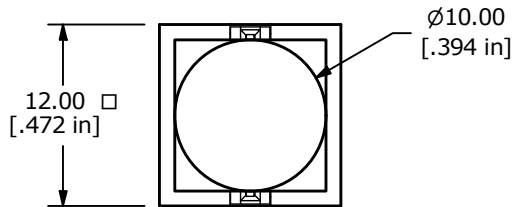


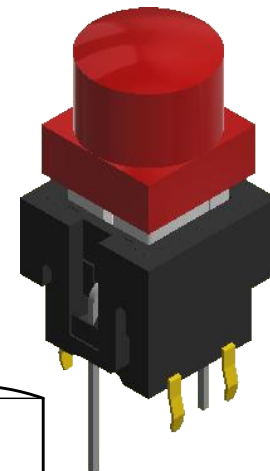
▲ **CIRCUIT: SPST OFF - (ON)**

**NOTES:**

1. ALL DIMENSIONS IN MM [INCH]
2. GENERAL TOLERANCE: X.X =  $\pm 0.4$   
X.XX =  $\pm 0.25$
3. RATING: 20VDC @ 1mA, 5VDC @ 5mA
4. CONTACT RESISTANCE: 200 $\Omega$  MAX.
5. INSULATION RESISTANCE: 100M $\Omega$  MIN. @ 100VDC.
- ▲ 6. OPERATING FORCE: 125  $\pm$  35gf
7. TRAVEL: 1.25  $\pm$  0.3 mm
8. OPERATING TEMPERATURE: -40°C to 85°C
9. OPERATING LIFE: 1,000,000 CYCLES
- ▲ 10. LED: RED
11. ▲ DENOTES CRITICAL PARAMETERS
12. CONTACT MATR'L: GOLD FLASH OVER NICKEL



▲ RED CAP with RED LED



LED SPECS		UNITS	RED
FORWARD CURRENT		mA	20
FORWARD VOLTAGE @ 20mA		VDC	1.95 TYP   2.5 MAX.
LUMINOUS INTENSITY @ 20mA		mcd	180 TYP.

REV	ECO NO	DESCRIPTION	DATE	BY
B	ECO-101243	UPDATE TO CURRENT LED SPECS	09/22/22	JS

<b>E-SWITCH®</b>				OBJECT ID 000006819
TITLE <b>LP15R1REDRED-N</b>				
SCALE	DATE	DR	DWG	REV
2:1	9/11/2017	MW	B270011	B

# Mouser Electronics

Authorized Distributor

Click to View Pricing, Inventory, Delivery & Lifecycle Information:

[E-Switch:](#)

[LP15R1REDRED-N](#)