

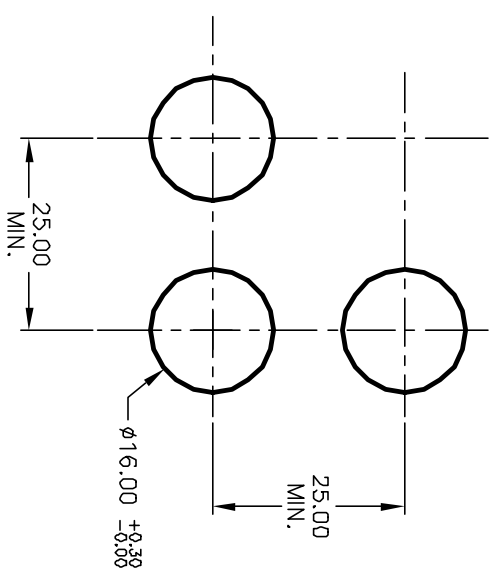
1 0 1 0 2  
3 0 0 4  
a-L-b (+)

PARTS LIST			
ITEM	QTY.	PART NO.	PART DESCRIPTION
1	1	F040009	D16 0A R1 1
2	1	F050422	50-004-22 (GRN LED)
3	1	F051211	50-012-11 (Transparent GRN lens)

SPST  
CONTACT CONFIGURATION

NOTES:

1. ALL DIMENSIONS IN MM
2. GENERAL TOLERANCE: X.X=±0.4  
X.XX=±0.25
3. RATINGS: 5A @250V AC  
8A @125V AC
4. CONTACT MATERIAL:  
UL, VDE, CSA, Semko, Nemko, Demko, Firmko Approved
5. LAMP VOLTAGE: 24V DC  
COPPER ALLOY W/Silver Plating



RECOMMENDED PANEL MOUNTING  
SCALE 1:1

REV.	ECN No.	DESCRIPTION	DATE	CHKD
A	12621	RELEASE FOR PRODUCTION	7/25/01	CJB

TITLE				
D16 0A R1 K GRN GRN (Mushroom Head)				
SCALE	DATE	DR	DWG	REV
1.5:1	7/25/01	CB	XF0530P	A



THE INFORMATION CONTAINED IN THIS DOCUMENT IS PROPRIETARY TO E-SWITCH AND IS NOT TO BE COPIED OR TRANSFERRED

# Mouser Electronics

Authorized Distributor

Click to View Pricing, Inventory, Delivery & Lifecycle Information:

[E-Switch:](#)

[D16OAR1KGRNGRN](#)