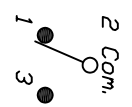


RECOMMENDED PCB LAYOUT



SWITCH FUNCTION		
POS. 1	POS. 2	POS. 3
DN	NONE	DN
2-3	OPEN	2-1

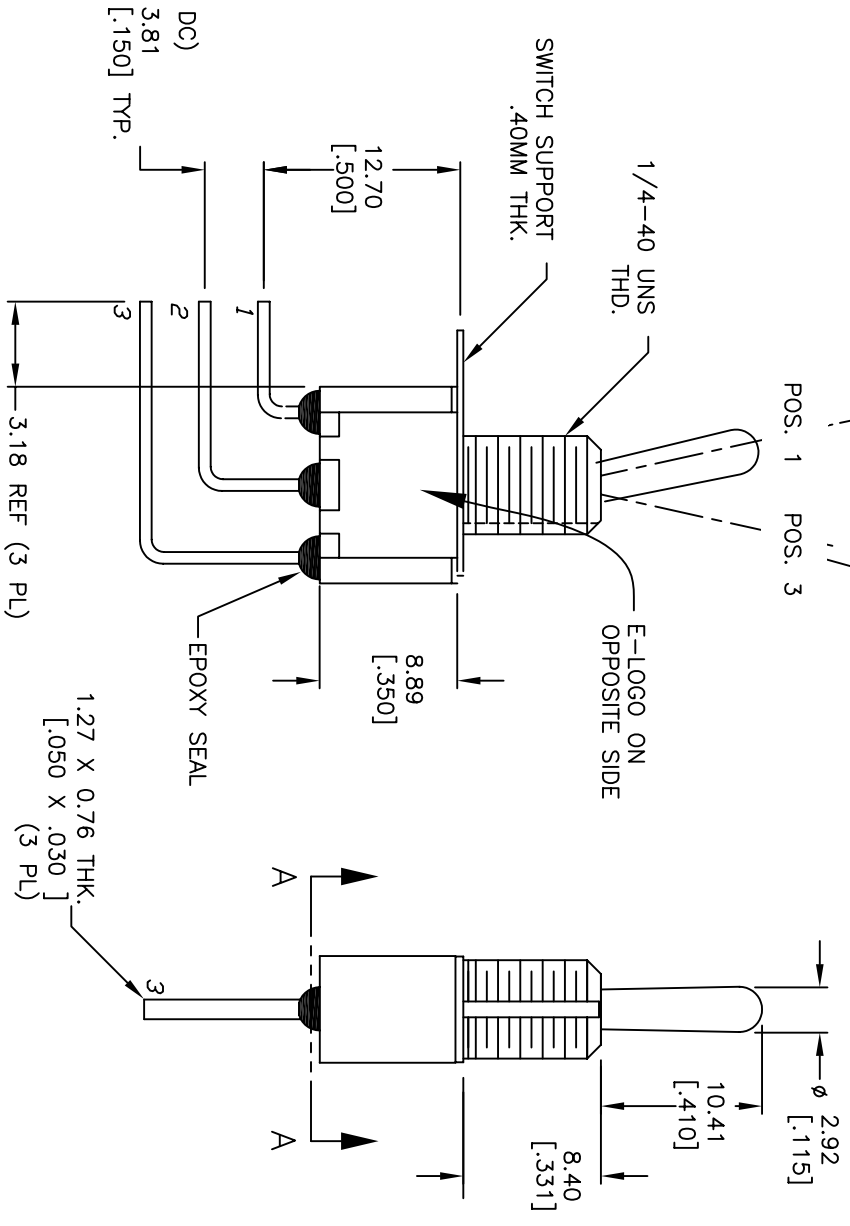
NOTES:

1. ALL DIMENSIONS IN MM [INCH]
2. GENERAL TOLERANCE: X.X=±0.4 X.XX=±0.25
3. TERMINAL NUMBERS FOR REF ONLY
4. RATING: RATING: 0.4(VA) Max. @20V Max. (AC OR DC)
5. FIXED TERM. & MOVING CONTACT: Cu Alloy w/ GOLD plate.
6. ELECTRIC LIFE: 40,000 make-and-break cycles at full load.
7. INSULATION RESISTANCE: 1,000 Mega-ohm min.
8. DIELECTRIC STRENGTH: 1,000 V RMS @sea level.
9. OPERATING TEMP.: -30°C to +85°C
10. 2002/95/EC (ROHS) COMPLIANT
11. PACKAGE: TRAY/108 PIECES PER
12. HARDWARE TO BE SUPPLIED IN BULK:

T100011-LOCK WASHER QTY-1

T100015-LOCK RING QTY-1

T100000-HEX NUT QTY-2



SECTION A-A

REV.	ECN	DESCRIPTION	DATE	TN
A	17164	RELEASED FOR PRODUCTION	4/9/07	TN

SCALE	DATE	DR	DWG	REV
2:1	4/9/07	TN	ST111114	A



100SP11B1M7REH

THE INFORMATION CONTAINED IN THIS DOCUMENT IS PROPRIETARY TO E-SWITCH AND IS NOT TO BE COPIED OR TRANSMITTED

Mouser Electronics

Authorized Distributor

Click to View Pricing, Inventory, Delivery & Lifecycle Information:

[E-Switch:](#)

[100SP1T1B1M7REH](#)