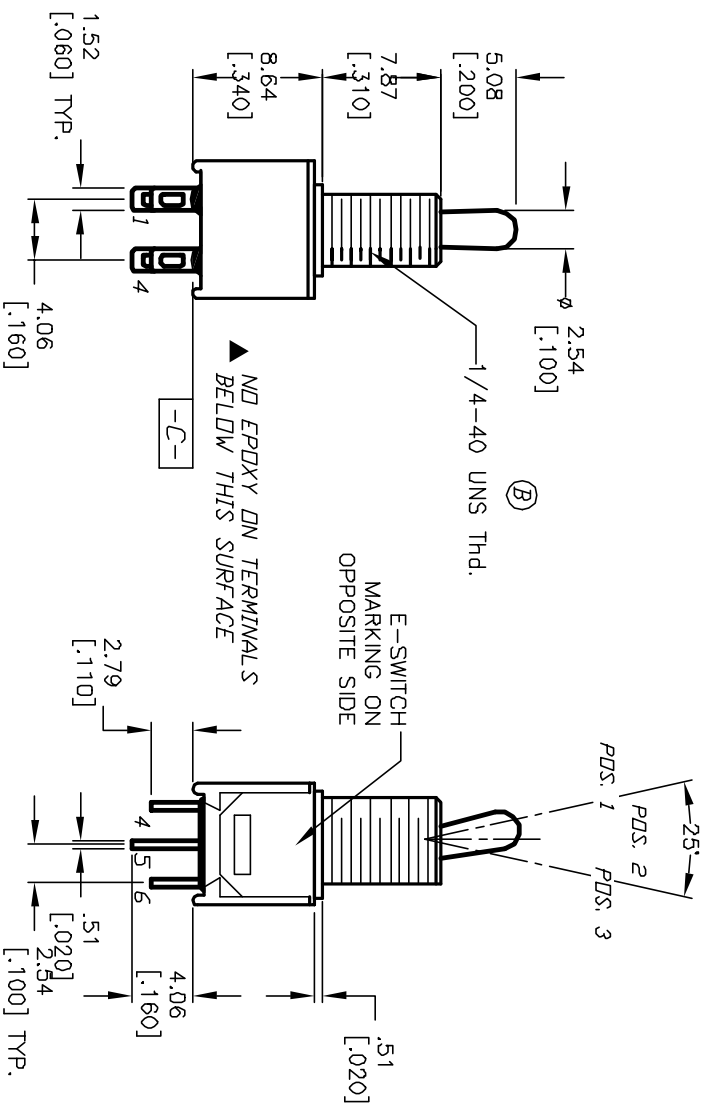
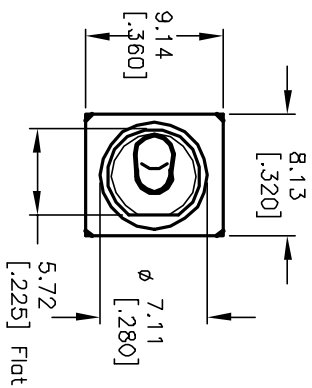


CIRCUIT: DPDT  
CONTACT CONFIGURATION

SWITCH FUNCTION		
POS. 1	POS. 2	POS. 3
DN	NONE	DN
2-3-5-6	DPEN	2-1,5-4

(B)



NOTES:

1. ALL DIMENSIONS IN MM [INCH]
2. GENERAL TOLERANCE: X.X=±0.4  
X.XX=±0.25
3. TERM. NOS. FOR REF. ONLY
4. CONTACT RATING: 0.4 (VA) max. @20 VAC or DC max.  
Gold plate over Ni plate.
5. FIXED TERMINAL & MOVING CONTACT: Copper alloy w/  
Gold plate over Ni plate.
6. ELECTRIC LIFE: 30,000 make-and-break cycles  
at full load.
7. INSULATION RESISTANCE: 1,000 M ohm min.
8. DIELECTRIC STRENGTH: 1,000 V RMS @sea level.
9. OPERATING TEMP.: -30°C to 85°C
10. DESIGNATE MAJOR FEATURE:

REV. B		11636		REVISED NOTES & THD		8/31/01		CJB	
REV. A		ECN NO.		DESCRIPTION		DATE		CHKD	
THE INFORMATION CONTAINED IN THIS DOCUMENT IS PRELIMINARY AND IS NOT TO BE COPIED OR TRANSMITTED									
TITLE: 200 MDP-1 T3 B5 M1 R E									
SCALE: 2:1		DATE: 4/2/01		DR: CJB		DWG: T221023		REV: B	

**E-SWITCH®**

# Mouser Electronics

Authorized Distributor

Click to View Pricing, Inventory, Delivery & Lifecycle Information:

[E-Switch:](#)

[200MDP1T3B5M1RE](#)