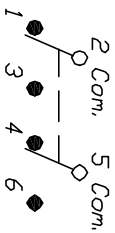


RECOMMENDED P.C.B. LAYOUT

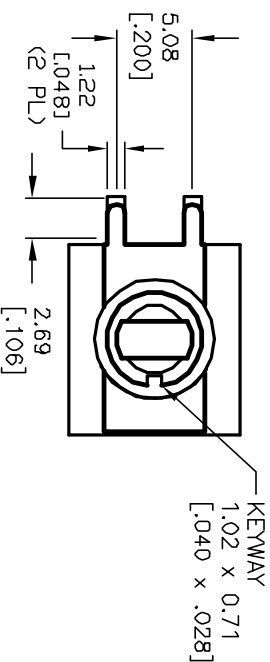


CIRCUIT: DPDT

SWITCH FUNCTION		
PDS. 1	PDS. 2	PDS. 3
DN	DIFF	DN
2-3-5-6	OPEN	2-1,5-4

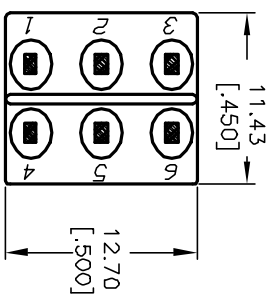
NOTES:

1. ALL DIMENSIONS IN MM [INCH]
2. GENERAL TOLERANCE: X.XX=±0.4 X.XX=±0.25
3. TERMINAL NUMBERS FOR REF ONLY
4. RATING: 0.4V @20V AC or DC
5. FIXED TERM. & MOVING CONTACT:
COPPER ALLOY w/Gold plate over
Nickel plate.
6. ELECTRIC LIFE: 50,000 make-and-break cycles at full load.
7. INSULATION RESISTANCE: 1,000 Mega-ohm min.
8. DIELECTRIC STRENGTH: 1,000 V RMS @sea level.
9. OPERATING TEMP.: -30°C to +85°C



PDS. 2

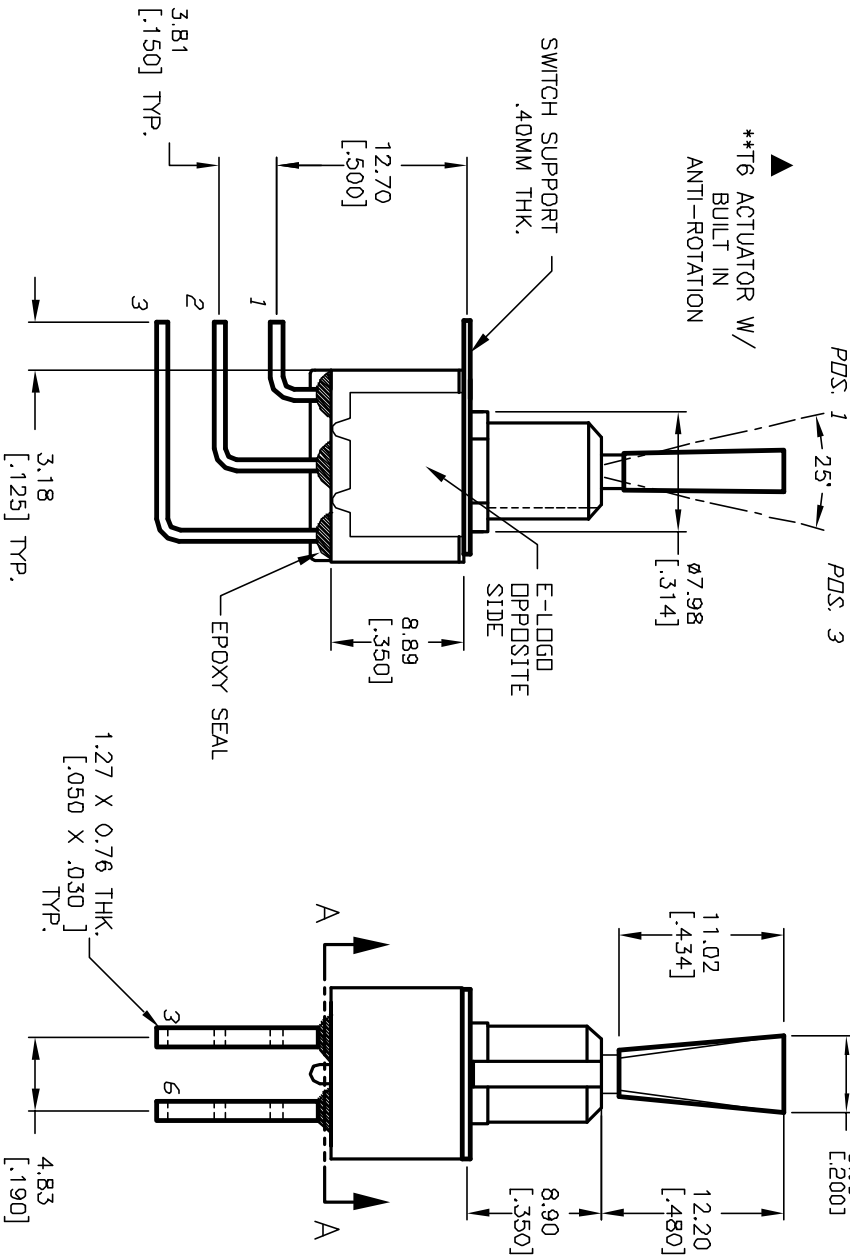
PDS. 3



SECTION A-A

CROPPED FOR CLARITY

▲ **T6 ACTUATOR W/ BUILT IN ANTI-ROTATION



REV.	ECN NO.	DESCRIPTION	DATE	CHK'D
A	12088	RELEASED FOR PRODUCTION	5/2/02	CB

TITLE	SCALE	DATE	DR	DWG	REV
100 DP-3 T6 B12 M7 R E (GOLD CONTACTS)	2:1	5/2/02	CB	T123038	A

E-SWITCH®

THE INFORMATION CONTAINED IN THIS DOCUMENT IS PREPARED BY E-SWITCH AND IS NOT TO BE COPIED OR TRANSMITTED

Mouser Electronics

Authorized Distributor

Click to View Pricing, Inventory, Delivery & Lifecycle Information:

[E-Switch:](#)

[100DP3T6B12M7RE](#)