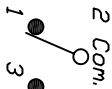


RECOMMENDED PCB LAYOUT

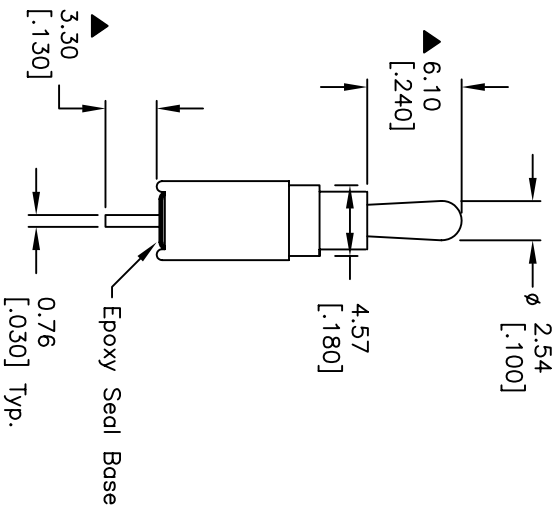
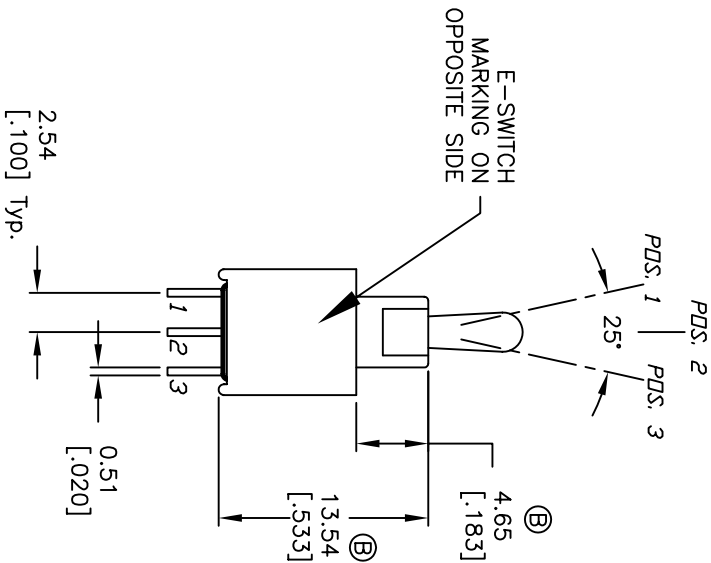
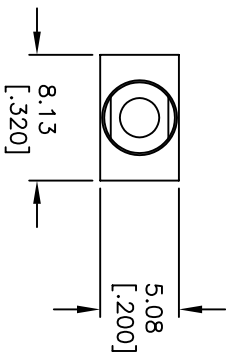


CIRCUIT: SPDT
CONTACT CONFIGURATION

| SWITCH FUNCTION | | |
|-----------------|--------|--------|
| PDS: 1 | PDS: 2 | PDS: 3 |
| DN | DNF | DN |
| 2-3 | OPEN | 2-1 |

NOTES:

1. ALL DIMENSIONS IN MM [INCH]
2. GENERAL TOLERANCE: X.X=±0.4
X.XX=±0.25
3. TERMINAL NUMBERS FOR REF ONLY
4. RATING: 3A @120V AC or 28VDC;
1A @250VAC.
5. FIXED TERM. & MOVING CONTACT:
Copper ALLOY W/Silver plate.
6. MECHANICAL LIFE: 30,000 make-and-break cycles
at full load.
7. CONTACT RESISTANCE: 20 MILLE-OHM MAX.
8. INSULATION RESISTANCE: 1,000 Mega-ohm min.
9. DIELECTRIC STRENGTH: 1,000 V RMS @sea level.
10. OPERATING TEMP.: -30°C to +85°C
11. ▲ DENOTES CRITICAL PARAMETER.
12. 2002/95/EC (ROHS) COMPLIANT



| | | | | |
|---|-------|-------------------------|---------|-----|
| B | 17922 | CORRECT 2 DIMENSIONS | 1/15/08 | BLR |
| A | 12200 | RELEASED FOR PRODUCTION | 5/31/02 | CB |

| REV. | ECN No. | DESCRIPTION | DATE | CHKD |
|--|---------|-------------|------|------|
| THE INFORMATION CONTAINED IN THIS DOCUMENT IS PROPRIETARY TO E-SWITCH AND IS NOT TO BE COPIED OR TRANSFERRED | | | | |



| | | | | | | | |
|--------------------------|--|-------|--|---------|-----|---------|-----|
| TITLE | | SCALE | | DATE | DR | DWG | REV |
| 2004 WMSP-3 T2 A1 M2 Q E | | 2:1 | | 1/15/08 | BLR | T201302 | B |

Mouser Electronics

Authorized Distributor

Click to View Pricing, Inventory, Delivery & Lifecycle Information:

[E-Switch:](#)

[200AWMSP3T2A1M2QE](#)