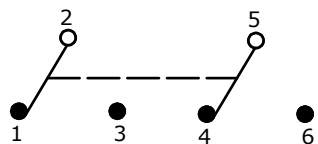
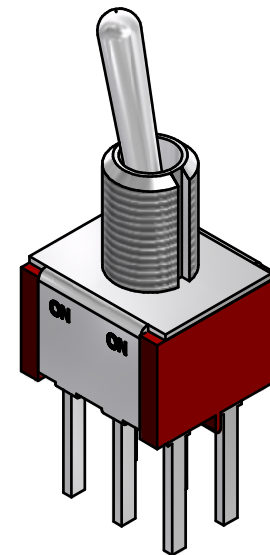
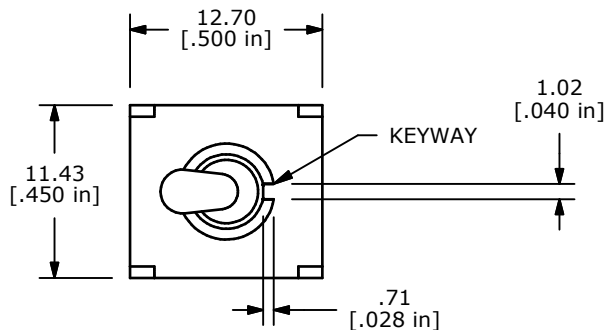
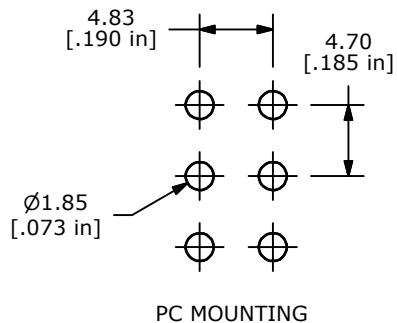
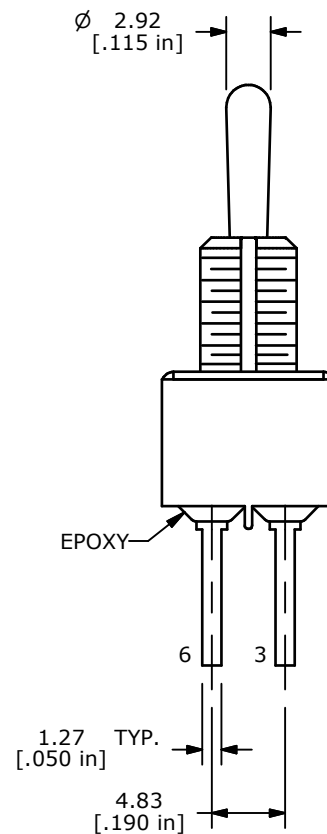
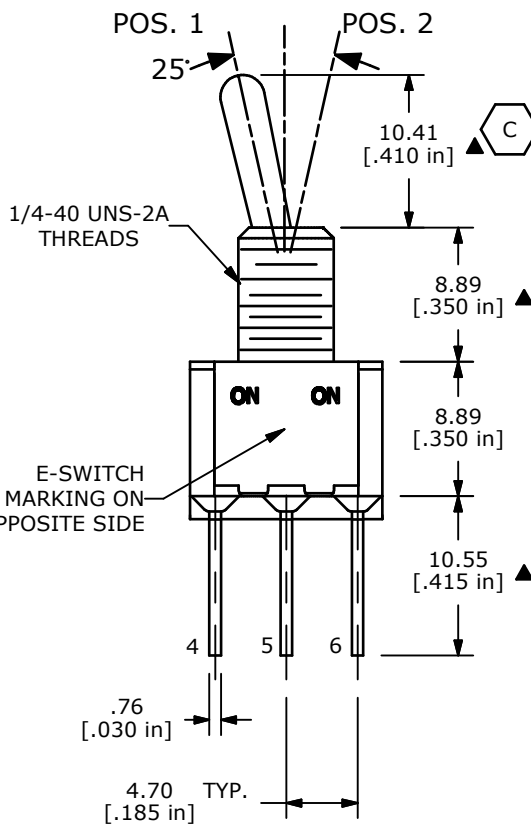
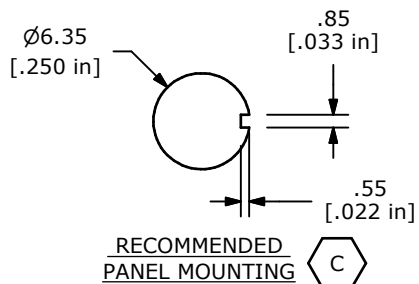




| SWITCH FUNCTION | |
|-----------------|----------|
| POS. 1 | POS. 2 |
| | |
| ON | ON |
| 2-3, 5-6 | 2-1, 5-4 |



CIRCUIT: DPDT



NOTES:

1. ALL DIMENSIONS IN MM [INCH]
2. GENERAL TOLERANCE: X.X=±0.4
X.XX=±0.25
3. TERMINAL NUMBERS FOR REF ONLY
- ▲ 4. PLATING MATERIAL: SILVER
5. RATING: 5 AMPS W/RESISTIVE LOAD @ 120VAC OR 28VDC
2 AMPS W/RESISTIVE LOAD @ 250VAC
6. ELECTRIC LIFE: 40,000 CYCLES
7. INSULATION RESISTANCE: 1,000 MΩ MIN.
8. DIELECTRIC STRENGTH: 1,000 V RMS @SEA LEVEL.
9. OPERATING TEMP.: -30°C to 85°C
10. ▲ DENOTES CRITICAL PARAMETER.
11. 2002/95/EC (ROHS) COMPLIANT

| | | | | |
|-----|--------|----------------------------------|----------|-----|
| C | 21284 | FUNCTION, ACTUATOR LENGTH, MOUNT | 10/28/13 | EBP |
| B | 16798 | UPDATED NOTES | 12/27/06 | TN |
| A | 14306 | RELEASED FOR PRODUCTION | 9/10/04 | TN |
| REV | PCR NO | DESCRIPTION | DATE | BY |

THE INFORMATION CONTAINED IN THIS DOCUMENT IS PROPRIETARY TO E-SWITCH AND IS NOT TO BE COPIED OR TRANSFERRED



TITLE 100DP1T1B1M53QE

| | | | | |
|-----------|-----------------|-------|-------------|-------|
| SCALE 2:1 | DATE 12/27/2006 | DR TN | DWG T121090 | REV C |
|-----------|-----------------|-------|-------------|-------|

Mouser Electronics

Authorized Distributor

Click to View Pricing, Inventory, Delivery & Lifecycle Information:

[E-Switch:](#)

[100DP1T1B1M53QE](#)