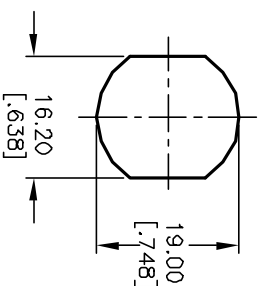


NOTES:

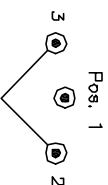
1. ALL DIMENSIONS IN MM [INCH]
2. GENERAL TOLERANCE: X.X=±0.4
X.XX=±0.25
3. TERM. NOS. FOR REF. ONLY
4. CONTACT RATING: 4A @125VAC/28VDC, 2A @250VAC
5. DIELECTRIC STRENGTH: 1KV RMS min. at sea level
6. ELECTRICAL LIFE: 10,000 make-and-break cycles at full load.
7. MATERIALS:

CONTACTS: Silver Plated Cu (Q Contact material)
 TERMINALS: GOLD Plated Cu (Q Contact material)
 MOUNTING NUT: Nickel Plated zinc alloy
 CONTACT SPRING: Piano Wire
 KEYS (2): Brass with code no. A126
 LOCK: Bright Ni plated zinc alloy with Ni facing
 TUMBLER Mechanism: 4-disc tumbler cylinder.



RECOMMENDED PANEL LAYOUT

| LEGEND | | |
|---|---------------------------------------|----------|
| ● | =Detent Positions (45° or 90°) | |
| ⊙ | =Key pull possible in these positions | |
| CIRCUIT: DP (45° INDEXING) CONTACT CONFIGURATION | | |
| SWITCH FUNCTION | | |
| POS. 1 | POS. 2 | POS. 3 |
| 8-1, 4-5 | 1-2, 5-6 | 7-8, 3-4 |



| | | | | |
|------|---------|-------------------------|----------|-------|
| REV. | ECN NO. | DESCRIPTION | DATE | CHK'D |
| A | 11722 | RELEASED FOR PRODUCTION | 10/10/01 | CJB |

| | | | | | | |
|-------------|--|-------|----------|-----|---------|-----|
| TITLE | | SCALE | DATE | DR | DWG | REV |
| K0130J-A126 | | 1:1 | 10/10/01 | CJB | K200219 | A |

E-SWITCH®

THE INFORMATION CONTAINED IN THIS DOCUMENT IS PROPRIETARY TO E-SWITCH AND IS NOT TO BE COPIED OR TRANSMITTED

Mouser Electronics

Authorized Distributor

Click to View Pricing, Inventory, Delivery & Lifecycle Information:

[E-Switch:](#)

[KO130JA126](#)