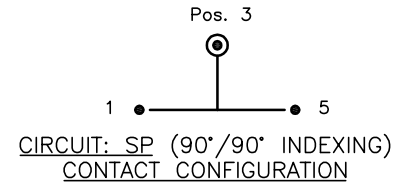
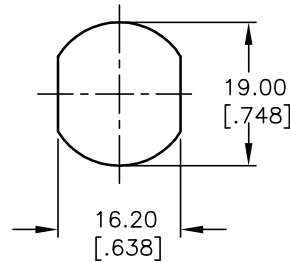


NOTES:

1. ALL DIMENSIONS IN MM [INCH]
2. GENERAL TOLERANCE: X.X=±0.4
X.XX=±0.25
3. TERM. NOS. FOR REF. ONLY
4. CONTACT RATING: 4A @125VAC/28VDC, 2A @250VAC
5. DIELECTRIC STRENGTH: 1KV RMS min. at sea level
6. ELECTRICAL LIFE: 10,000 make-and-break cycles at full load.
7. MATERIALS:

CONTACTS: Silver Plated CU (Q Contact material)
 TERMINALS: GOLD Plated Cu (Q Contact material)
 MOUNTING NUT: Nickel Plated zinc alloy
 CONTACT SPRING: Piano Wire
 KEYS (2): Brass
 LOCK: Bright NI plated zinc alloy with NI facing
 TUMBLER Mechanism: 4-disc tumbler cylinder.



SWITCH FUNCTION		
CONNECTED TERMINAL #		
POS. 1	POS. 3	POS. 5
6-7	7-1	1-3

LEGEND

- =Detent Positions
- ⊙ =Key pull possible in these positions

E-SWITCH®

B	14152	UPDATE DIMENSIONS	7/7/04	AR
A	14083	RELEASED FOR PRODUCTION	6/9/04	AR
REV.	ECN No.	DESCRIPTION	DATE	CHKD

TITLE				
K0130Z2				
SCALE	DATE	DR	DWG	REV
1:1	6/9/04	AR	K200259	B

THE INFORMATION CONTAINED IN THIS DOCUMENT IS PROPRIETARY TO E-SWITCH AND IS NOT TO BE COPIED OR TRANSFERRED

Mouser Electronics

Authorized Distributor

Click to View Pricing, Inventory, Delivery & Lifecycle Information:

[E-Switch:](#)

[KO130Z2](#)