

SCHEMATIC

SPECIFICATIONS

FUNCTION:
1P1T OFF-ON

RATINGS:
ANSI/UL 1054 and CAN/CSA C22.2 No. 55 (E194579):
10A 125VAC [UR, CLR]
EN 61058-1:2002:
6(2)A 250V~ μ 1E4 T125/55 [ENEC14]

CONTACT RESISTANCE:
Initial: 5m Ω Max. at 50VAC

INSULATION RESISTANCE:
100M Ω Min. at 500VDC

DIELECTRIC STRENGTH:
1,500VAC for 1 Minute

ELECTRICAL LIFE:
6,000 Cycles [UR, CLR]
10,000 Cycles [ENEC14]

TEMPERATURE:
Operating: -20°C to 85°C

APPROVALS:



COLORS AND MARKINGS

BODY:
Black

ACTUATOR:
Black

MARKINGS:
I/O Vertical (1)

MARKING COLOR:
White

MATERIALS

BODY:
Polyamide 6/6 (PA66), UL94 V-2

ACTUATOR:
Polyamide 6/6 (PA66), UL94 V-2

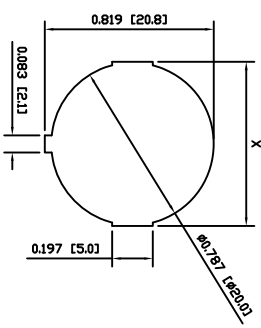
SPRING:
Steel

SPRING COVER:
Steel

CONTACTS:
Silver Alloy Plated Copper

TERMINALS:
Silver Plated Copper

SUGGESTED PANEL CUTOUT



PANEL THICKNESS	X
0.030~0.049 [0.75~1.25]	0.795 [20.2]
0.049~0.079 [1.25~2.00]	0.803 [20.4]
0.079~0.118 [2.00~3.00]	0.811 [20.6]

ACTUATOR	A	09/08/10	CAB
BODY	B	10/03/13 <td>CAB</td>	CAB
COLORS	A	09/08/10 <td>CAB</td>	CAB
MATERIALS	A	09/08/10 <td>CAB</td>	CAB
SPECIFICATIONS	B	10/04/01 <td>CAB</td>	CAB
REFERENCE	REV.	DATE	BY

THE INFORMATION CONTAINED IN THIS DOCUMENT IS PROPRIETARY TO E-SWITCH-LAMB INDUSTRIES AND IS NOT TO BE COPIED OR TRANSMITTED

CONNECTED SPECIFICATIONS	C
CORRECTED POSITION OF ANTI-ROTATION RIB	A
INITIAL RELEASE DESCRIPTION	REV.

INCHES [MILLIMETERS]	DATE	BY
GENERAL TOLERANCES ±0.008 [±0.2] / ±1'	31207	5/19/13
SCALE	11882	10/04/01
DRAWING NOT TO SCALE	18772	10/07/13
	PCB	DRAWN BY



TITLE	DATE	REVISION
RR11131121	APRIL 1, 2010	C
38-RR1131121		

Mouser Electronics

Authorized Distributor

Click to View Pricing, Inventory, Delivery & Lifecycle Information:

[E-Switch:](#)

[RR11131121](#)