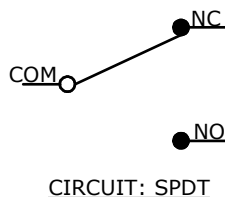
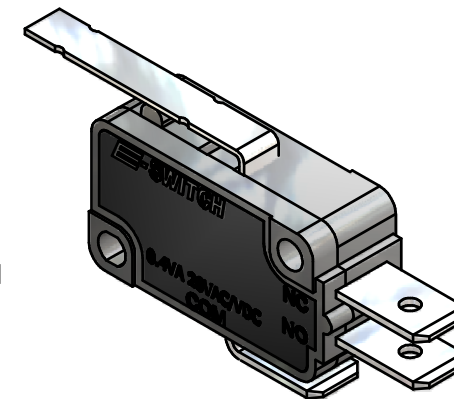
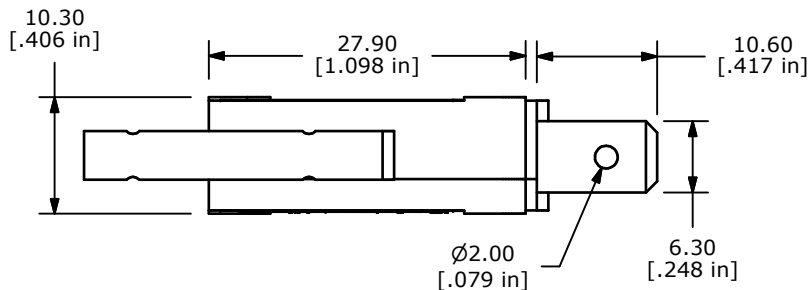


▲ O.P. (MM)	P.T. (MM)
15.5±0.8	4.1 MAX.

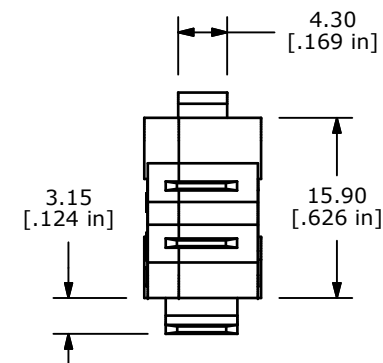
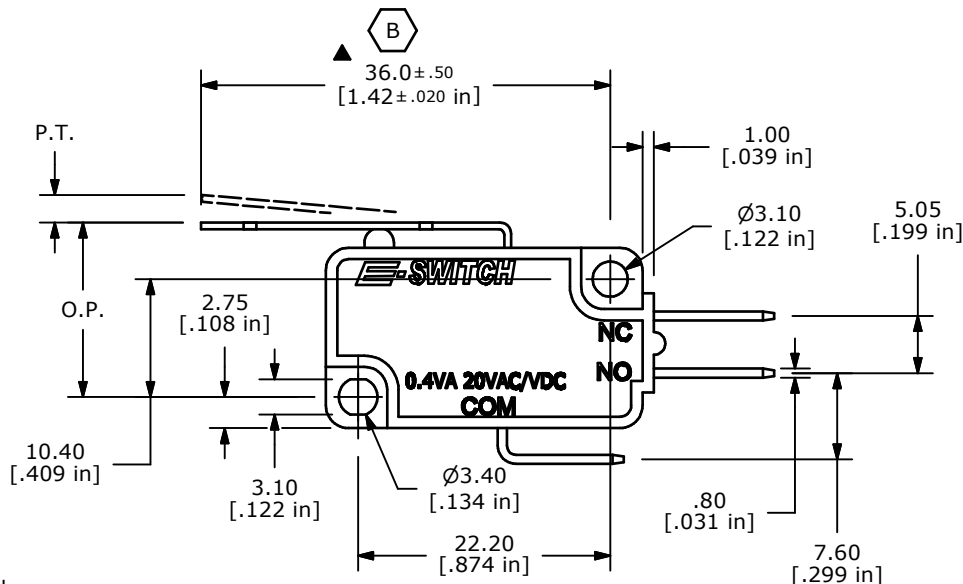
O.P. = OPERATING POINT  
P.T. = PRE-TRAVEL



- NOTES:
1. ALL DIMENSIONS IN MM [INCH]
  2. GENERAL TOLERANCE: X.X=±0.4  
X.XX=±0.25
  3. RATING: 0.4VA @20V (AC or DC)
  - ▲ 4. OPERATING FORCE: 45 ± 20 GRAMS
  5. OPERATING TEMP: -25°C TO 85°C
  6. ELECTRICAL LIFE: 50,000 CYCLES MIN.
  7. MECHANICAL LIFE: 1,000,000 CYCLES TYP.
  8. INSULATION RESISTANCE: 100 MEGA-OHMS MIN.
  9. DIELECTRIC STRENGTH: 1500VAC 1 MINUTE (INITIAL VALUE)
  10. CONTACT RESISTANCE: 100 MILLI-OHMS MAX.
  11. ▲ DENOTES CRITICAL PARAMETER.
  12. 2002/95/EC (ROHS) COMPLIANT



ISOMETRIC



THE INFORMATION CONTAINED IN THIS DOCUMENT IS PROPRIETARY TO E-SWITCH AND IS NOT TO BE COPIED OR TRANSFERRED



B	20756	36.0 WAS 36.6	9/17/12	EBP
A	18718	RELEASED FOR PRODUCTION	12/14/09	BLR
REV	PCR NO	DESCRIPTION	DATE	BY

TITLE LS085R102F045C2A				
SCALE	DATE	DR	DWG	REV
1.5:1	12/14/2009	BLR	Q950080	B

# Mouser Electronics

Authorized Distributor

Click to View Pricing, Inventory, Delivery & Lifecycle Information:

[E-Switch:](#)

[LS085R102F045C2A](#)