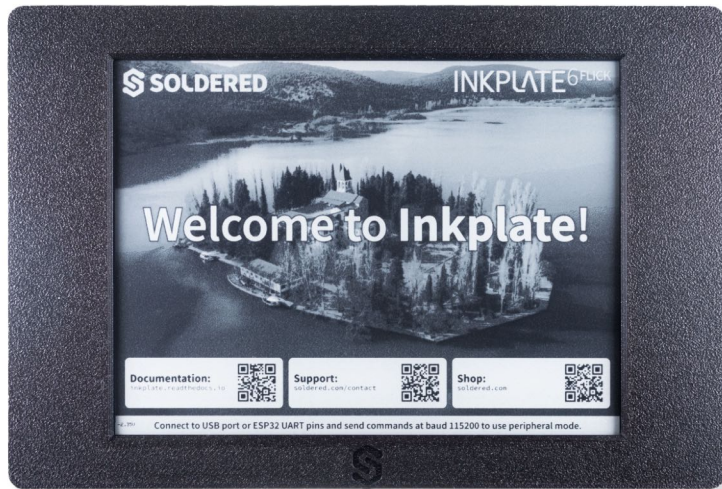


SOLDERED INKPLATE 6FLICK



Weight	210 g
Variant	Without e-paper Display, With e-paper, With e-paper & Enclosure, With e-paper, Enclosure & Battery

DESCRIPTION

Inkplate 6 FLICK is a plug-and-play device featuring a 6.0" e-paper display with a resolution of 1024x758 pixels. Its main advantage is the ease of use—simply plug in the USB-C cable, open the Arduino IDE, and within minutes, your content will be displayed! With numerous [ready-made examples](#) and [comprehensive documentation](#), getting started is extremely easy, and developing more complex projects is also significantly simplified.

This board stands out from the rest of the Inkplate series because it comes with touchscreen functionality supporting two simultaneous touches and built-in lighting that can be controlled in 64 steps, making it ideal for interactive displays. With an exceptionally fast refresh rate of under one second, it also supports greyscale (displaying shades of grey, not just black and white) and "partial updates"—refreshing only part of the screen, which is faster and more visually appealing.

The board is based on the popular ESP32 microcontroller, providing sufficient processing power to manage the screen, as well as WiFi and Bluetooth connectivity. If you choose the version with a lithium battery, you can take advantage of its extremely low power consumption of just 23µA in deep sleep mode, allowing for months of use without recharging. The board also includes a Li-ion battery charger, a microSD card slot, a Real Time Clock, and numerous GPIO pins for connecting additional electronics and expanding the capabilities of the Inkplate.

Its environmental friendliness, combined with high build quality, makes it an ideal choice for those looking to create sustainable and innovative electronic projects. The Inkplate 6 FLICK uses screens recycled from old e-book readers, which is extremely eco-friendly. While minor imperfections like scratches may occur due to recycling, all screens with significant damage are not used in production, ensuring high quality.

FEATURES

- Screen refresh in less than 1 second (225ms for 1-bit, 1.26s for 3-bit Greyscale)
- 6.0", 1024x758 pixel e-paper with greyscale and partial updates support
- Touchscreen with support for two simultaneous touches
- Screen lighting adjustable in 64 steps
- Powered by ESP32 microcontroller with built-in WiFi and Bluetooth 4.0 (BLE)
- Deep sleep current: 23µA, includes lithium battery charger
- microSD card reader
- Additional GPIO lines available, easyC/Qwiic compatibility, supports I²C and SPI
- Ready Arduino library (100% Adafruit GFX compatible) for displaying text, images, and geometric shapes
- Dimensions without case: 150.4 x 107.8 x 11.5 mm / 6.06 x 4.24 x 0.45 inch

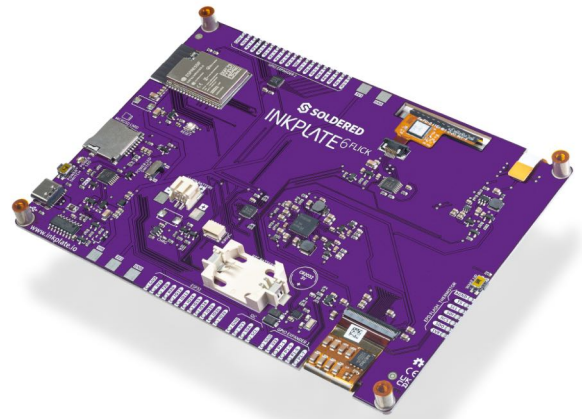
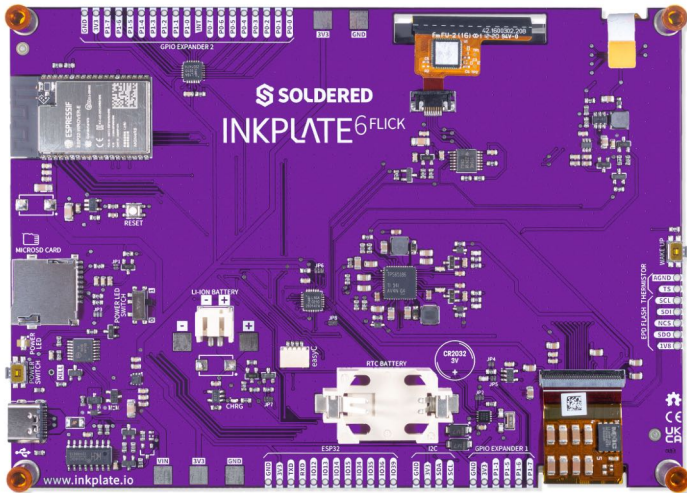
USEFUL LINKS

TIPS

Use the links in the sidebar to access the documentation and get started easily.

OTHER IMAGES





Weight

210 g

Variant

Without e-paper Display, With e-paper, With e-paper & Enclosure, With e-paper, Enclosure & Battery

Mouser Electronics

Authorized Distributor

Click to View Pricing, Inventory, Delivery & Lifecycle Information:

Soldered:

333320