

BASIC STEPPER DRIVER



Weight 8 g

DESCRIPTION

This driver for stepper motor enables control over a stepper motor that does not require more than 800mA of current and works at up to 14V voltage. Except for the driver, it has built-in LED lights that indicate which phase of the motor is currently active. Connecting with microcontroller is easy, and control is directly through the library.

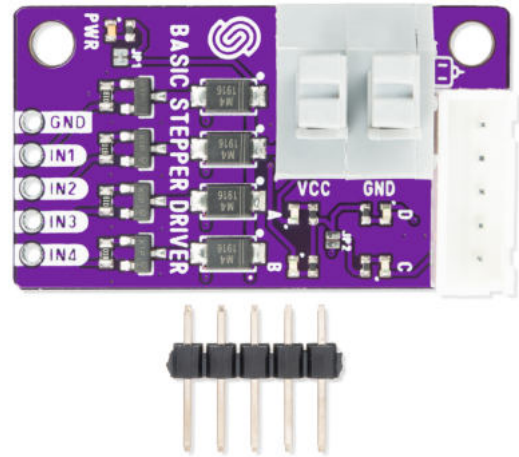
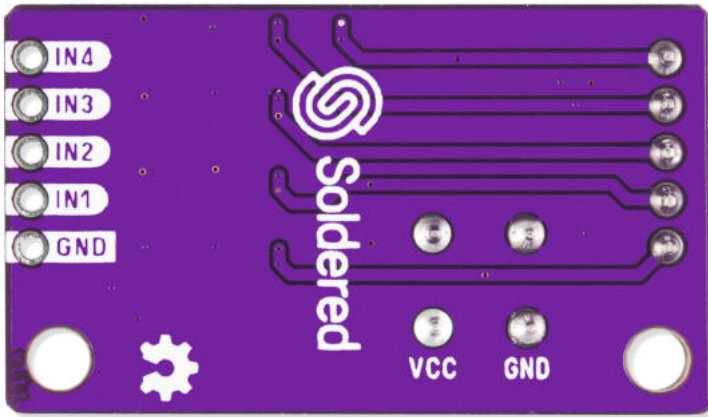
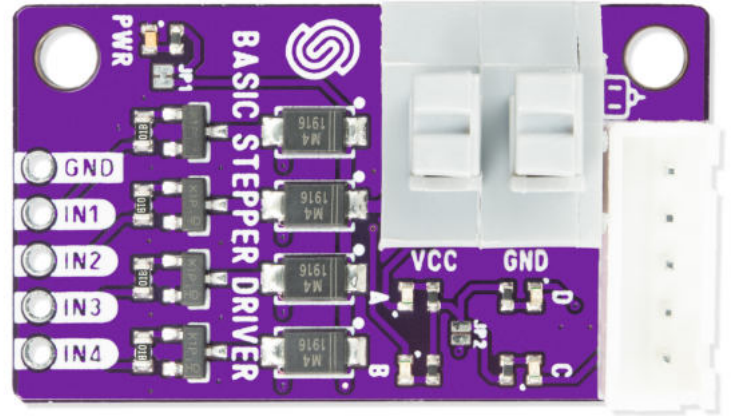
FEATURES

- Voltage: 3V3 - 14V
- Current: 800mA
- Dimensions: 36 x 22 mm / 1.4 x 0.9 inch

USEFUL LINKS

- [Open-Source Hardware files](#)

OTHER IMAGES



Weight

8 g

Mouser Electronics

Authorized Distributor

Click to View Pricing, Inventory, Delivery & Lifecycle Information:

[Soldered:](#)

[333134](#)