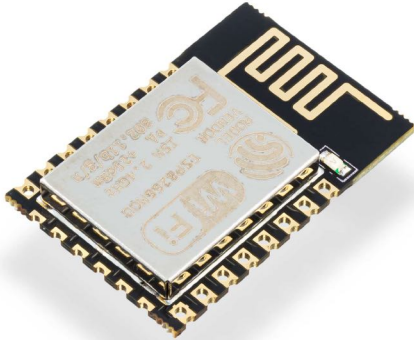


ESP8266 ESP-12 WIFI MODULE



Weight 4 g

DESCRIPTION

ESP8266 is an IC that delivers a true revolution in the world of makers, especially in the world of IoT (Internet of Things). This is a complete 32-bit SoC (System on Chip) with built-in flash memory, frame and EEPROM which can even be programmed directly from the Arduino interface, without the need for additional micro-controller. With all this, the most important point is that in itself has a built-in WiFi (AP, STA, AP + STA), all that for "little money".

ESP8266 in this form (ESP-12) is suitable for direct soldering to a printed circuit board as an SMD component or directly solder the wires since the pin has its holes. It also comes with a **PCB trace antenna**.

Note: ESP8266 is an IC that works at 3.3V! Connecting directly to 5V, or track [Arduino](#) or Croduino plate will destroy it! Use logic level converter.

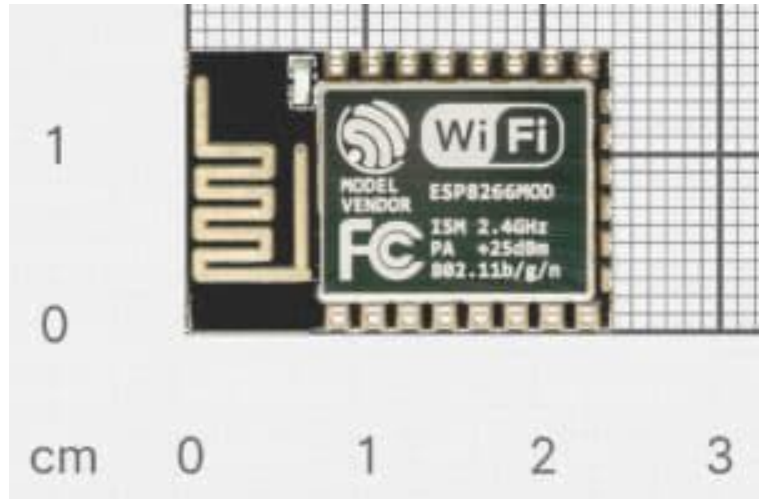
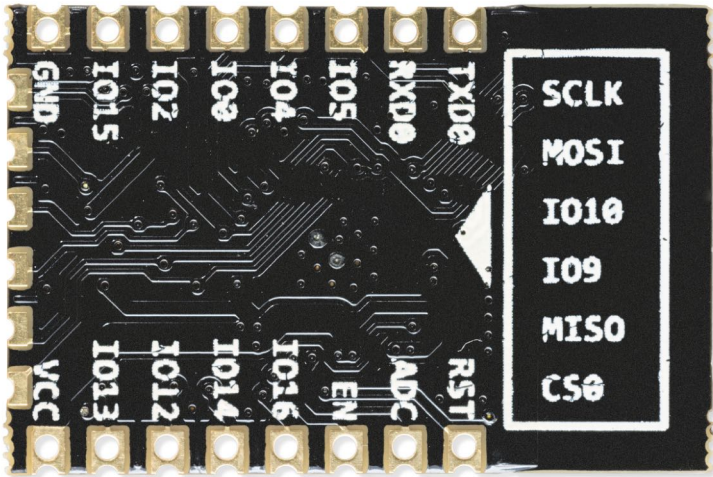
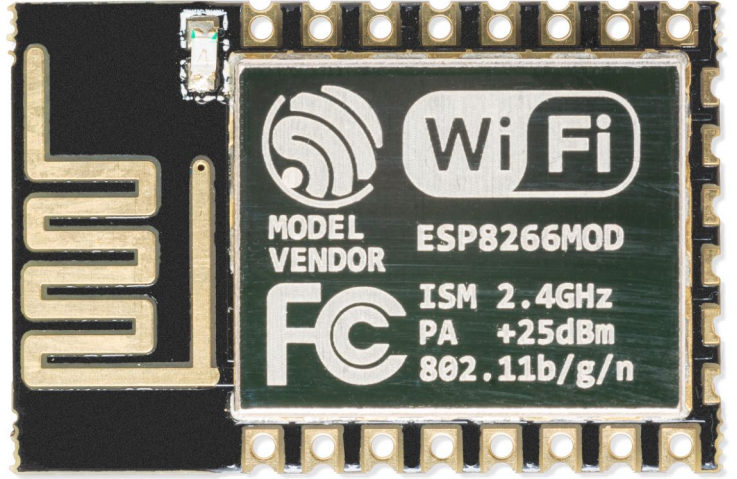
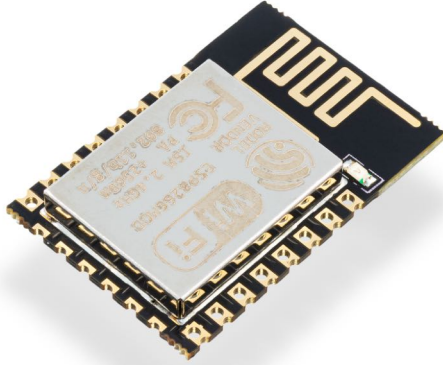
FEATURES

- Voltage: 1.8V - 3.8V
- 32-bit SoC with UART, SPI, WiFi
- Frequency: 52MHz
- Ability to work with very low power consumption
- 16 additional GPIO pins

USEFUL LINKS

- [Datasheet](#)

OTHER IMAGES



Weight

4 g

Mouser Electronics

Authorized Distributor

Click to View Pricing, Inventory, Delivery & Lifecycle Information:

[Soldered:](#)

[101296](#)