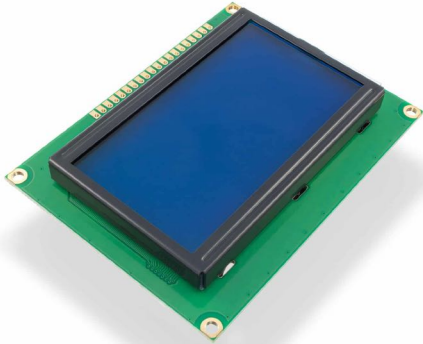


GRAPHIC LCD DISPLAY 128X64 BLUE



Weight 75 g

DESCRIPTION

LCD display with one ST7920 controller displays text, symbols or any other characters that are a product of [Croduino/Arduino](#). With an ability to display 128 characters in 64 rows, it will find its usage in many projects that are required to show clear and readable output information.

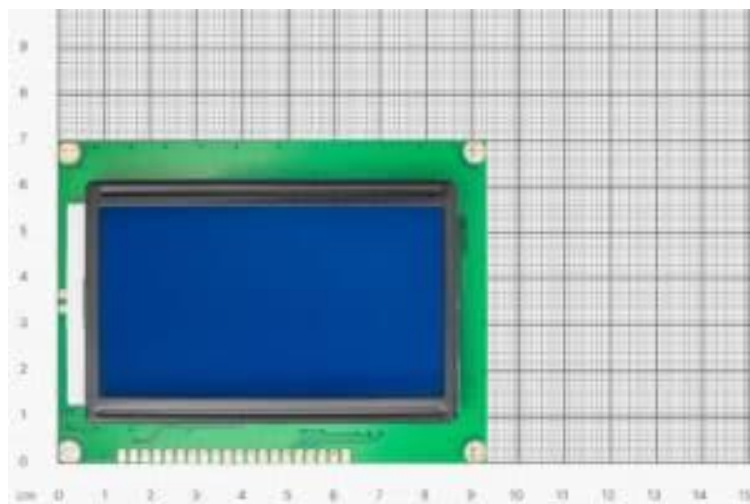
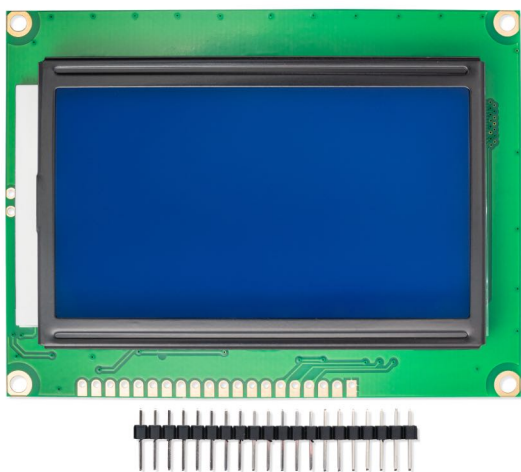
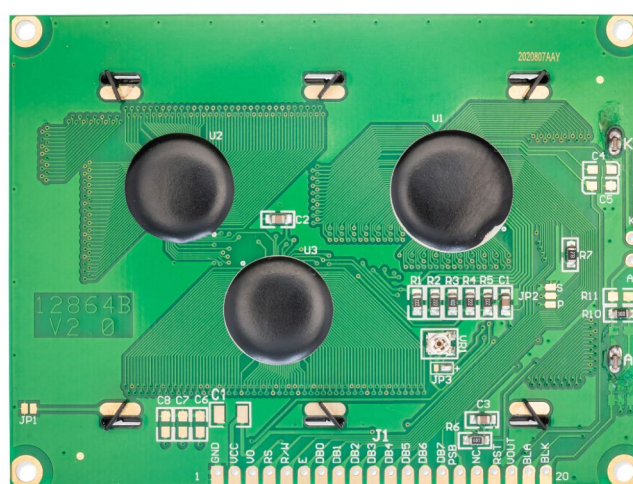
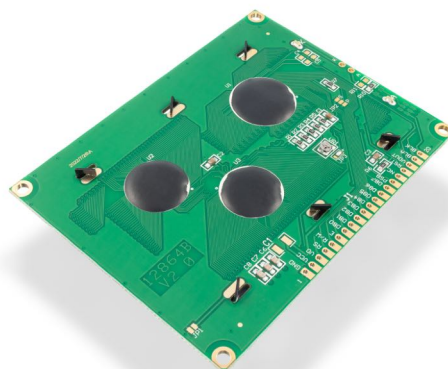
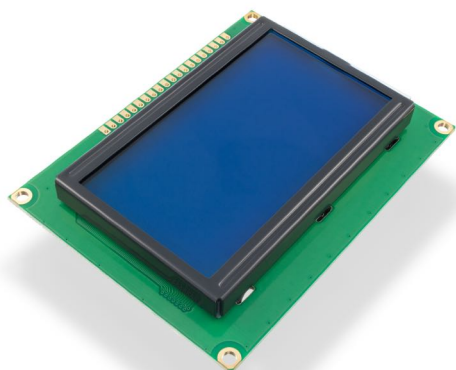
FEATURES

- Color of characters: White
- Background lighting: Blue
- Voltage: 5V
- It comes with a 20-pin male header which is evened and not soldered.
- Screen dimensions: 70,7 x 38,8 mm / 2.8" x 1.5"
- Dimensions: 93 x 70 x 12,7 mm / 3.7" x 2.8" x 0.5"

USEFUL LINKS

- [Datasheet](#)

OTHER IMAGES



Weight

75 g

Mouser Electronics

Authorized Distributor

Click to View Pricing, Inventory, Delivery & Lifecycle Information:

[Soldered:](#)

[101277](#)