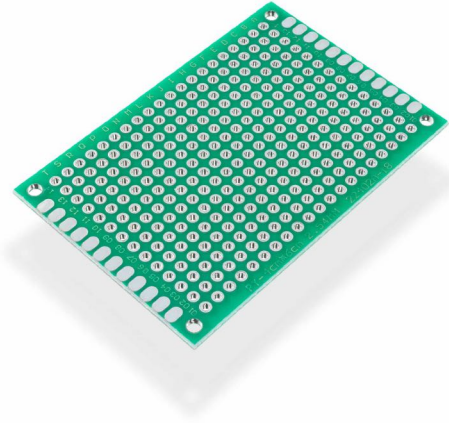


PROTOBOARD 6X4CM



Weight 9 g

DESCRIPTION

Protoboard used for the permanent connection (also known as soldering) of electronic components. High quality, with solder mask on one side, as well as column and row markings.

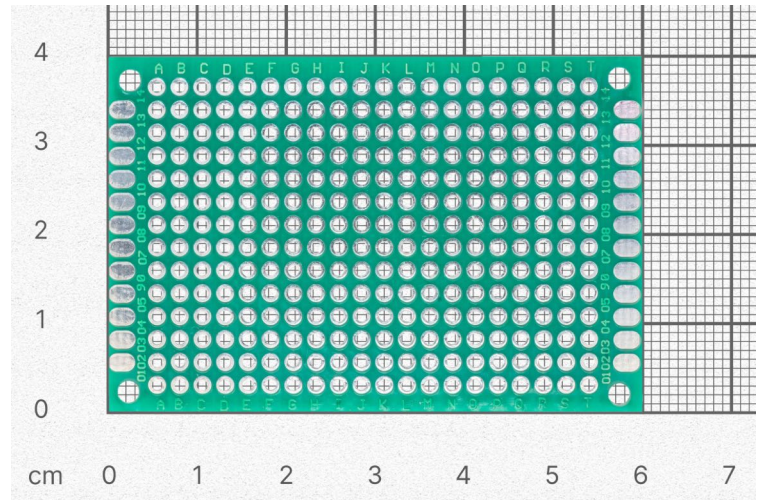
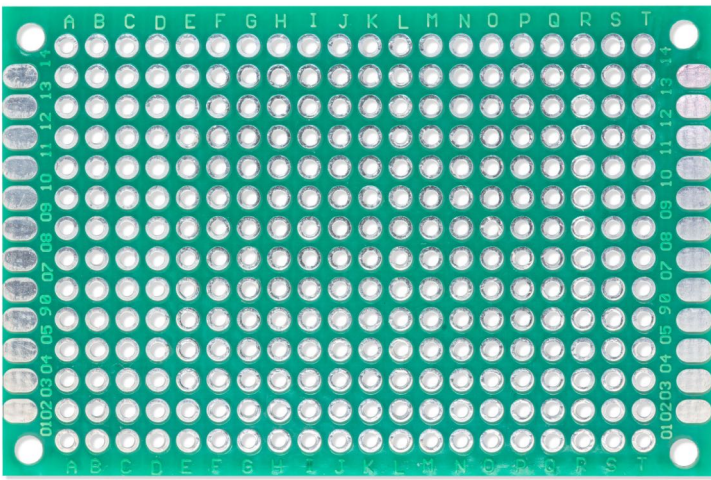
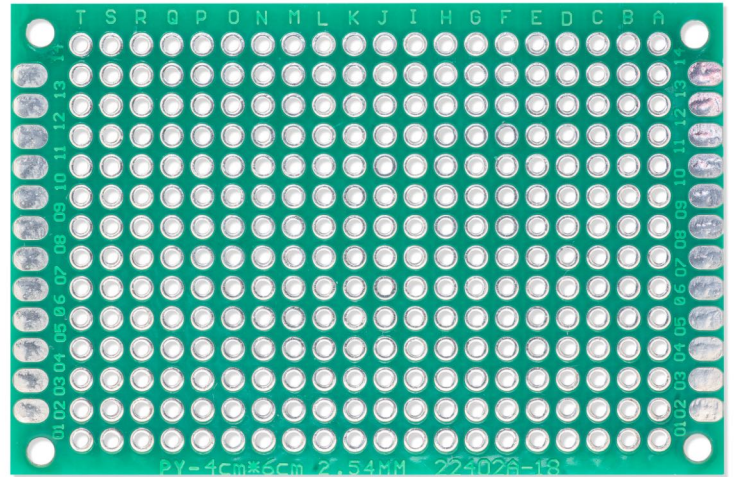
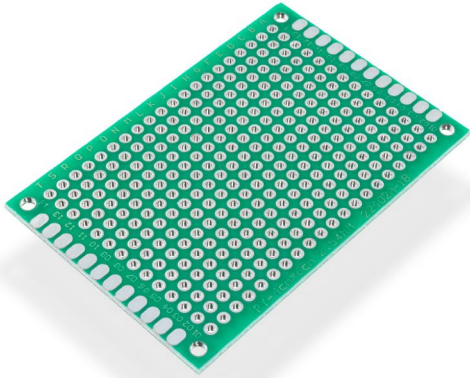
- **Dimensions:** 6cm x 4cm

FEATURES

- Dimensions: 60 x 40 mm / 2.4" x 1.6"

USEFUL LINKS

OTHER IMAGES



Weight

9 g

Mouser Electronics

Authorized Distributor

Click to View Pricing, Inventory, Delivery & Lifecycle Information:

[Soldered:](#)

[100350](#)