

# Memory Module Specifications

## KSM64R52BS8-16MD

16GB 1Rx8 2G x 80-Bit

PC5-6400 CL52 Registered EC8 288-Pin DIMM

### DESCRIPTION

Kingston's KSM64R52BS8-16MD is a 2G x 80-bit (16GB) DDR5-6400 CL52 SDRAM (Synchronous DRAM), 1Rx8, ECC, memory module, based on ten 2G x 8-bit FBGA components. The SPD is programmed to JEDEC standard latency DDR5-6400 timing of 52-52-52 at 1.1V. Each 288-pin DIMM uses gold contact fingers. The electrical and mechanical specifications are as follows:

### FEATURES

- Power Supply: VDD = 1.1V Typical
- VDDQ = 1.1V Typical
- VPP = 1.8V Typical
- VDDSPD = 1.8V to 2.0V
- On-Die ECC
- x80 ECC (x40, 2 independent I/O sub channels)
- 32 internal banks
- Hard/Soft Post Package Repair
- Sideband access with I3C/I2C
- PCB: Height 1.23" (31.25mm)
- RoHS Compliant and Halogen-Free

### SPECIFICATIONS

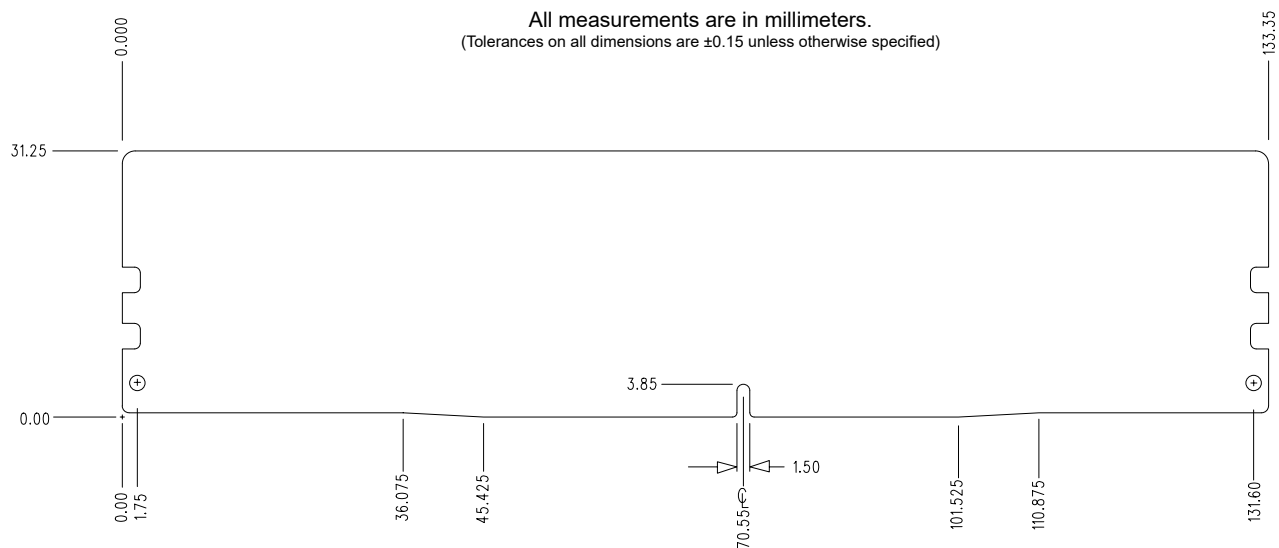
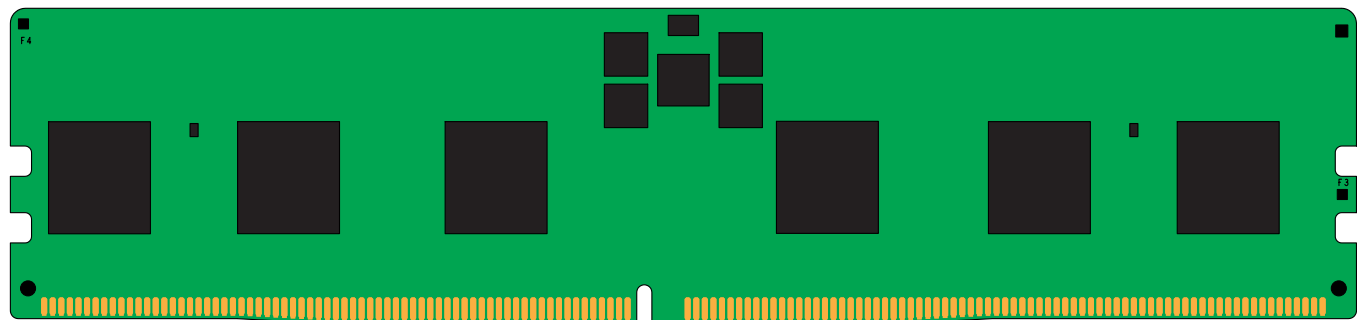
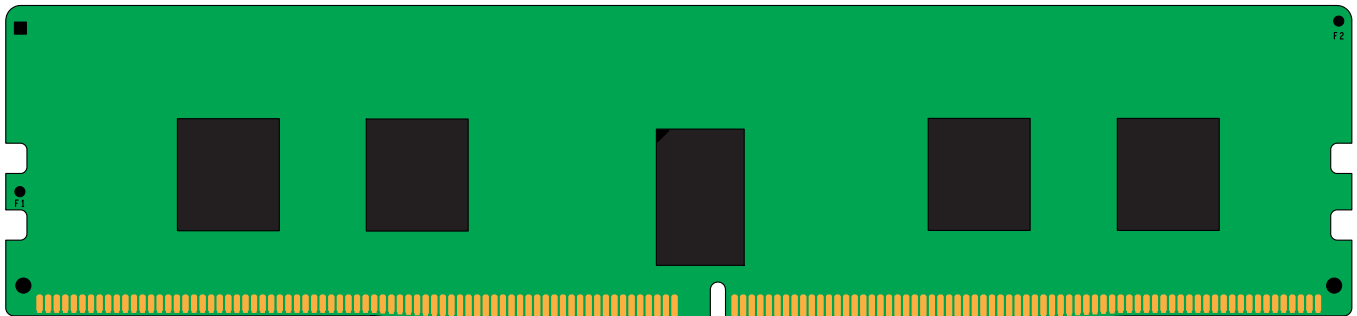
CL(IDD)	52 cycles
Row Cycle Time (tRCmin)	48ns(min.)
Refresh to Active/Refresh Command Time (tRFCmin)	295ns(min.)
Row Active Time (tRASmin)	32ns(min.)
Row Precharge Time (tRPmin)	16ns(min.)
UL Rating	94 V - 0
Operating Temperature	0° C to +95° C
Storage Temperature	-55° C to +100° C

### Module Assembly

DRAM: Micron (D-DIE)

Continued >>

## MODULE DIMENSIONS



The product images shown are for illustration purposes only and may not be an exact representation of the product.  
Kingston reserves the right to change any information at anytime without notice.

# Mouser Electronics

Authorized Distributor

Click to View Pricing, Inventory, Delivery & Lifecycle Information:

[Kingston:](#)

[KSM64R52BS8-16MD](#)