

Memory Module Specifications

KSM64R52BD8-32MD

32GB 2Rx8 4G x 80-Bit

PC5-6400 CL52 Registered EC8 288-Pin DIMM

DESCRIPTION

Kingston's KSM64R52BD8-32MD is a 4G x 80-bit (32GB) DDR5-6400 CL52 SDRAM (Synchronous DRAM), 2Rx8, ECC, memory module, based on twenty 2G x 8-bit FBGA components. The SPD is programmed to JEDEC standard latency DDR5-6400 timing of 52-52-52 at 1.1V. Each 288-pin DIMM uses gold contact fingers. The electrical and mechanical specifications are as follows:

FEATURES

- Power Supply: VDD = 1.1V Typical
- VDDQ = 1.1V Typical
- VPP = 1.8V Typical
- VDDSPD = 1.8V to 2.0V
- On-Die ECC
- x80 ECC (x40, 2 independent I/O sub channels)
- 32 internal banks
- Hard/Soft Post Package Repair
- Sideband access with I3C/I2C
- PCB: Height 1.23" (31.25mm)
- RoHS Compliant and Halogen-Free

SPECIFICATIONS

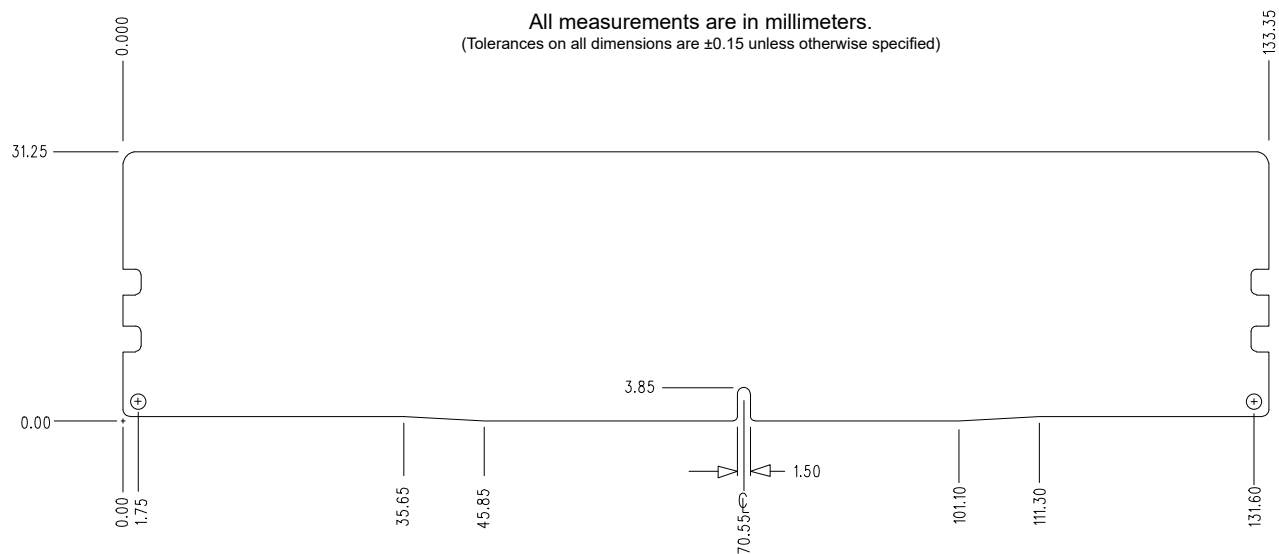
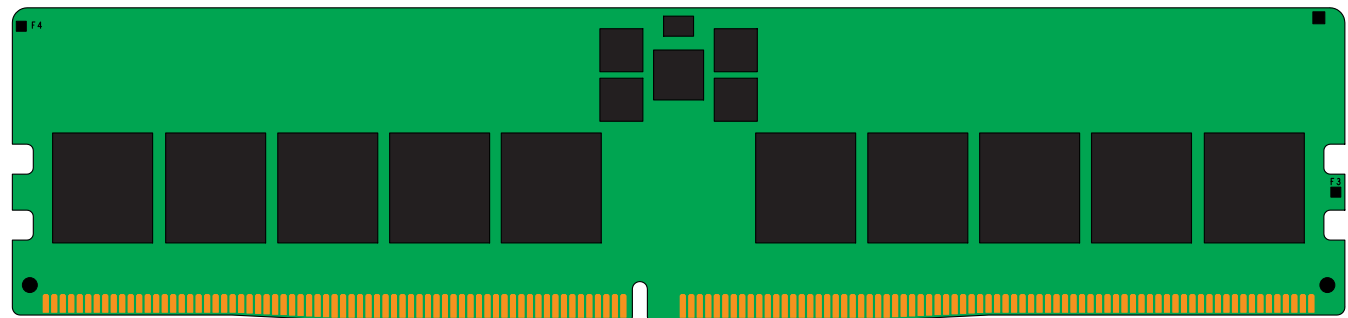
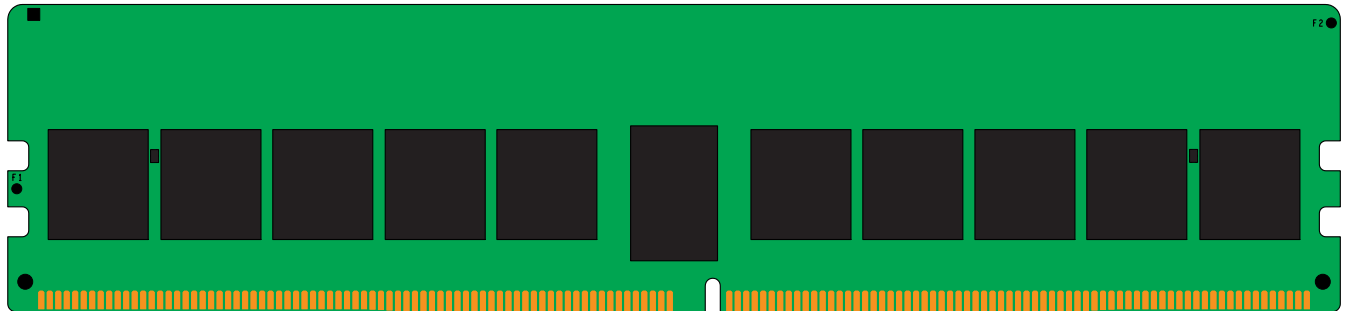
CL(IDD)	52 cycles
Row Cycle Time (tRCmin)	48ns(min.)
Refresh to Active/Refresh Command Time (tRFCmin)	295ns(min.)
Row Active Time (tRASmin)	32ns(min.)
Row Precharge Time (tRPmin)	16ns(min.)
UL Rating	94 V - 0
Operating Temperature	0° C to +95° C
Storage Temperature	-55° C to +100° C

Module Assembly

DRAM: Micron (D-DIE)

Continued >>

MODULE DIMENSIONS



The product images shown are for illustration purposes only and may not be an exact representation of the product.
Kingston reserves the right to change any information at anytime without notice.

Mouser Electronics

Authorized Distributor

Click to View Pricing, Inventory, Delivery & Lifecycle Information:

[Kingston:](#)

[KSM64R52BD8-32MD](#)