

**ARM[®] Cortex[®]-M
32-bit Microcontroller**

**NuMaker-M0A230C
User Manual
NuMicro[®] M0A21 Series**

The information described in this document is the exclusive intellectual property of Nuvoton Technology Corporation and shall not be reproduced without permission from Nuvoton.

Nuvoton is providing this document only for reference purposes of NuMicro microcontroller based system design. Nuvoton assumes no responsibility for errors or omissions.

All data and specifications are subject to change without notice.

For additional information or questions, please contact: Nuvoton Technology Corporation.

www.nuvoton.com

Table of Contents

1 Overview 7

2 Features 8

3 Hardware Configuration 9

 3.1 Front View 9

 3.2 Rear View 11

 3.3 Extension Connectors 12

 3.3.1 Pin Assignment for Extension Connectors 12

 3.3.2 Arduino UNO Compatible Extension Connectors 15

 3.4 Power Supply Configuration 17

 3.4.1 VIN Power Source 17

 3.4.2 5 V Power Sources 17

 3.4.3 3.3 V Power Sources 18

 3.4.4 Power Connectors 18

 3.4.5 USB Connectors 19

 3.4.6 Power Switches 19

 3.4.7 Power Supply Models 19

 3.5 Ammeter Connector 22

 3.6 Function Switches 23

 3.7 CAN Mode Selection 24

 3.8 LIN Mode Selection 24

 3.9 Push Buttons 25

 3.10 LEDs 25

 3.11 Nu-Link2-Me 25

 3.11.1 VCOM Switches 25

 3.11.2 Status LEDs 26

4 Quick Start 27

 4.1 Toolchains Support 27

 4.2 Nuvoton Nu-Link Driver Installation 27

 4.3 BSP Firmware Download 29

 4.4 Hardware Setup 29

 4.5 Find the Example Project 31

 4.6 Execute the Project under Toolchains 31

 4.6.1 Keil MDK 31

4.6.2 IAR EWARM..... 35

4.6.3 NuEclipse 37

5 NuMaker-M0A230C Schematics 43

5.1 Nu-Link2-Me 43

5.2 M0A21 Platform 44

5.3 Extension Connector 45

5.4 PCB Placement 46

6 REVISION HISTORY 47

List of Figures

Figure 1-1 NuMaker-M0A230C Development Board 7

Figure 3-1 Front View of NuMaker-M0A230C 9

Figure 3-2 Rear View of NuMaker-M0A230C 11

Figure 3-3 M0A230C1AC Extension Connectors..... 12

Figure 3-4 Arduino UNO Compatible Extension Connectors..... 15

Figure 3-5 External Power Supply Sources on Nu-Link2-Me 19

Figure 3-6 External Power Supply Sources on M0A21 platform 20

Figure 3-7 Detach the Nu-Link2-Me from NuMaker-M0A230C..... 21

Figure 3-8 Wiring between Ammeter Connector and Ammeter..... 23

Figure 3-9 Function Switches on NuMaker-M0A230C..... 24

Figure 4-1 Nu-Link USB Driver Installation Setup..... 27

Figure 4-2 Nu-Link USB Driver Installation 28

Figure 4-3 Open VCOM Function 29

Figure 4-4 ICE USB Connector..... 29

Figure 4-5 Device Manger..... 30

Figure 4-6 PuTTY Session Setting..... 30

Figure 4-7 Template Project Folder Path..... 31

Figure 4-8 Warning Message of “Device not found” 31

Figure 4-9 Project File Migrate to Version 5 Format..... 32

Figure 4-10 Debugger Setting in Options Window..... 32

Figure 4-11 Programming Setting in Options Window..... 33

Figure 4-12 Compile and Download the Project 33

Figure 4-13 Keil MDK Debug Mode 34

Figure 4-14 Debug Message on Serial Port Terminal Windows..... 34

Figure 4-15 IAR EWARM Window 35

Figure 4-16 Compile and Download the Project 35

Figure 4-17 IAR EWARM Debug Mode 36

Figure 4-18 Debug Message on Serial Port Terminal Windows..... 36

Figure 4-19 Import the Project in NuEclipse 37

Figure 4-20 Import Projects Windows..... 37

Figure 4-21 Open Project Properties Window 38

Figure 4-22 Project Properties Settings 38

Figure 4-23 Build Project..... 39

Figure 4-24 Open Debug Configuration..... 39

Figure 4-25 Main Tab Configuration 40

Figure 4-26 Debugger Tab Configuration 40

Figure 4-27 Startup Tab Configuration 41

Figure 4-28 NuEclipse Debug Mode 42

Figure 4-29 Debug Message on Serial Port Terminal Windows..... 42

Figure 5-1 Nu-Link2-Me Circuit 43

Figure 5-2 M0A21 platform Circuit 44

Figure 5-3 Extension Connectors Circuit 45

Figure 5-4 Front Placement 46

Figure 5-5 Rear Placement 46

List of Tables

Table 3-1 Extension Connectors..... 12

Table 3-2 M0A230C1AC Full-pin Extension Connectors and GPIO Function List 14

Table 3-3 Arduino UNO Extension Connectors and M0A230C1AC Mapping GPIO List..... 16

Table 3-4 Vin Power Source 17

Table 3-5 5 V Power Sources 17

Table 3-6 3.3 V Power Sources 18

Table 3-7 Power Connectors 18

Table 3-8 USB Connectors 19

Table 3-9 Power Switches 19

Table 3-10 Supply External Power through Nu-Link2-Me 20

Table 3-11 Supply External Power for M0A21 Platform 22

Table 3-12 Ammeter Connector..... 22

Table 3-13 Function Switches..... 23

Table 3-14 Operating Mode of CAN Transceiver..... 24

Table 3-15 Operating Mode of LIN Transceiver..... 24

Table 3-16 Push-Buttons 25

Table 3-17 LEDs 25

Table 3-18 VCOM Function of Nu-Link2-Me..... 25

Table 3-19 Operation Status LED Patterns 26

1 OVERVIEW

The NuMaker-M0A230C is a development board for Nuvoton NuMicro® M0A21 microcontrollers. The NuMaker-M0A230C consists of two parts: a M0A21 platform and an on-board Nu-Link2-Me debugger and programmer. The NuMaker-M0A230C is designed for industrial and automotive control application evaluation, prototype development and validation with power consumption monitoring function.

The M0A21 platform is based on NuMicro® M0A230C1AC. For the development flexibility, the M0A21 platform provides the extension connectors of M0A230C1AC, the Arduino UNO compatible headers and able to adopt multiple power supply. The M0A21 platform also provides CAN and LIN transceiver for relative function development. Furthermore, the Nuvoton-designed ammeter connector can measure the power consumption instantly, which is essential for the prototype evaluation.

In addition to the M0A21 platform, there is an attached on-board debugger and programmer “Nu-Link2-Me”. The Nu-Link2-Me supports on-chip debugging, online and offline ICP programming via SWD interface. The Nu-Link2-Me supports virtual COM (VCOM) port for printing debug messages on PC. Besides, the programming status can be shown on the built-in LEDs. Further, the Nu-Link2-Me can be detached from the development board to become a stand-alone mass production programmer.

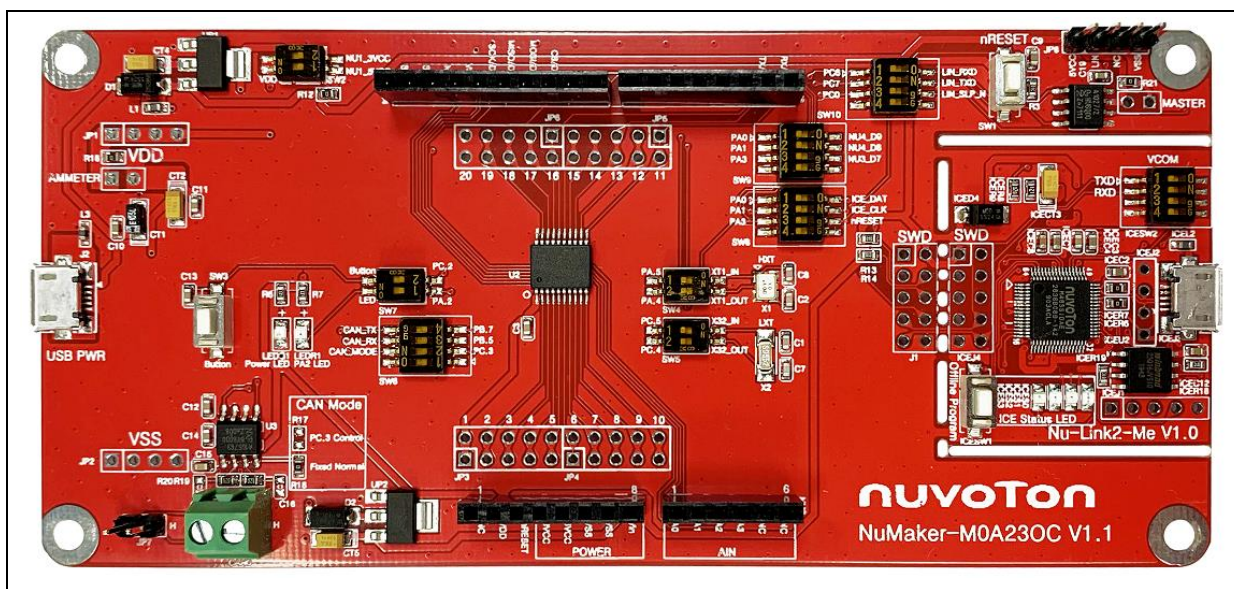


Figure 1-1 NuMaker-M0A230C Development Board

2 FEATURES

- NuMicro® M0A230C1AC microcontroller with function compatible with:
 - ◆ M0A230C1AC
 - ◆ M0A230B1AC
 - ◆ M0A210C1AC
 - ◆ M0A210B1AC
- M0A230C1AC full pin extension connectors
- Arduino UNO compatible extension connectors
- Ammeter connector for measuring the microcontroller's power consumption
- Flexible board power source:
 - ◆ External V_{DD} power connector
 - ◆ Arduino UNO compatible extension connector V_{in}
 - ◆ LIN bus connector JP8_5VCC
 - ◆ USB FS connector on M0A21 platform
 - ◆ ICE USB connector on Nu-Link2-Me
- On-board CAN transceiver and bus connector
- On-board LIN transceiver and bus connector
- On-board Nu-Link2-Me debugger and programmer:
 - ◆ Debug through SWD interface
 - ◆ On-line/off-line programming
 - ◆ Virtual COM port function

3 HARDWARE CONFIGURATION

3.1 Front View

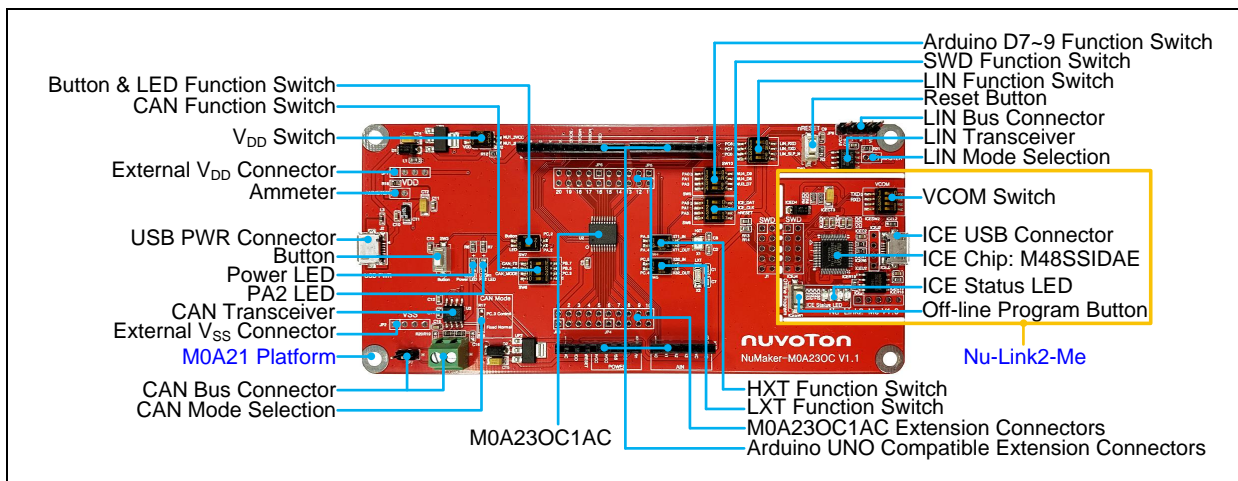


Figure 3-1 Front View of NuMaker-M0A230C

Figure 3-1 shows the main components and connectors from the front side of NuMaker-M0A230C. The following lists components and connectors from the front view:

- Target chip: M0A230C1AC (U2)
- USB PWR Connector (J2)
- Arduino UNO Compatible Extension Connectors (NU1, NU2, NU3, NU4)
- M0A21 Extension Connectors (JP3, JP4, JP5 and JP6)
- External V_{DD} Power Connector (JP1)
- External V_{SS} Power Connector (JP2)
- On-board CAN Transceiver (U3)
- CAN Bus Connector (JP7 and CAN0)
- CAN Function Switch (SW6)
 - ◆ Enable PB.5 and PB.7 to CAN transceiver
 - ◆ Enable PC.3 to control CAN Mode
- On-board LIN Transceiver (U4)
- LIN Bus Connector (JP8)
- LIN Function Switch (SW10)
 - ◆ Enable PC.6 and PC.7 to LIN transceiver
 - ◆ Enable PC.0 to control LIN mode
- V_{DD} Switch (SW2)
- Ammeter Connector (AMMETER)
- Reset Button (SW1)
- Power LED and PA2 LED (LEDG1 and LEDR1)
- Button (SW3)

- Button & LED Function Switch (SW7)
 - ◆ Enable PC.2 to Button
 - ◆ Enable PA.2 to LEDR1
- HXT Function Switch (SW4)
 - ◆ Enable PA.4 and PA.5 to External 12 MHz Crystal
- LXT Function Switch (SW5)
 - ◆ Enable PC.4 and PC.5 to External 32.768 kHz Crystal
- SWD Function Switch (SW8)
 - ◆ Enable PA.0 and PA.1 to ICE_DAT and ICE_CLK
 - ◆ Enable PA.3 to nRESET
- Arduino D7~9 Function Switch
 - ◆ Enable PA.0, PA.1 and PA.3 to Arduino D9, D8 and D7
- Nu-Link2-Me
 - ◆ VCOM Switch
 - ◆ ICE Chip: M48SSIDAE (ICEU2)
 - ◆ ICE USB Connector (ICEJ3)
 - ◆ ICE Status LED (ICES0, ICES1, ICES2, ICES3)
 - ◆ Off-line Program Button (ICESW1)

3.2 Rear View

Figure 3-2 shows the main components and connectors from the rear side of NuMaker-M0A230C.

The following lists components and connectors from the rear view:

- Nu-Link2-Me
- ◆ MCUVCC Power Switch (ICEJPR1)
- ◆ ICEVCC Power Switch (ICEJPR2)

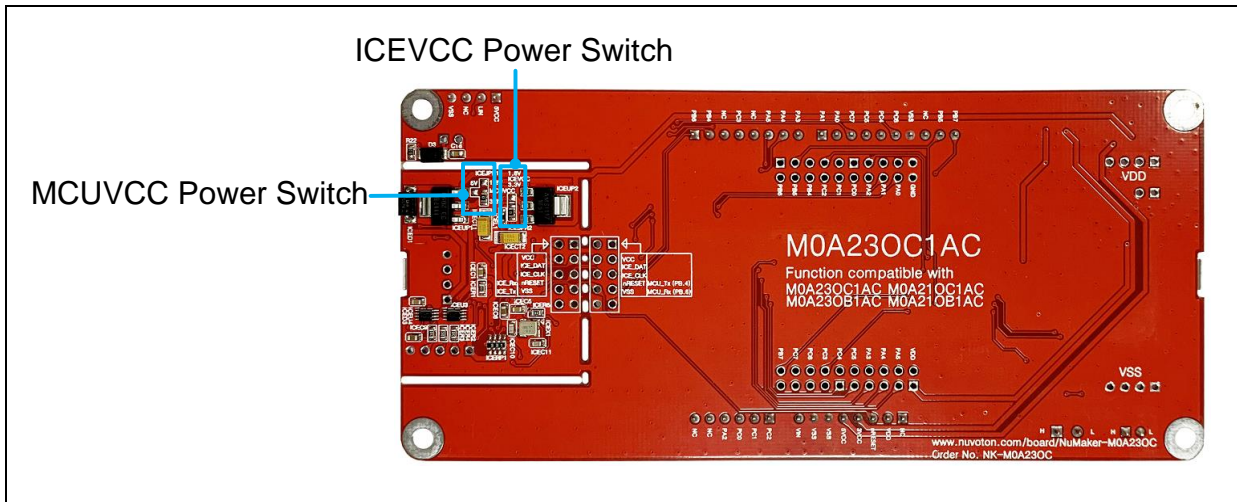


Figure 3-2 Rear View of NuMaker-M0A230C

3.3 Extension Connectors

Table 3-1 presents the extension connectors.

Connector	Description
JP3, JP4, JP5 and JP6	Full pins extension connectors on the NuMaker-M0A230C.
NU1, NU2, NU3 and NU4	Arduino UNO compatible pins on the NuMaker-M0A230C.

Table 3-1 Extension Connectors

3.3.1 Pin Assignment for Extension Connectors

The NuMaker-M0A230C provides the M0A230C1AC onboard and extension connectors (JP3, JP4, JP5 and JP6). Figure 3-3 shows the M0A230C1AC extension connectors.

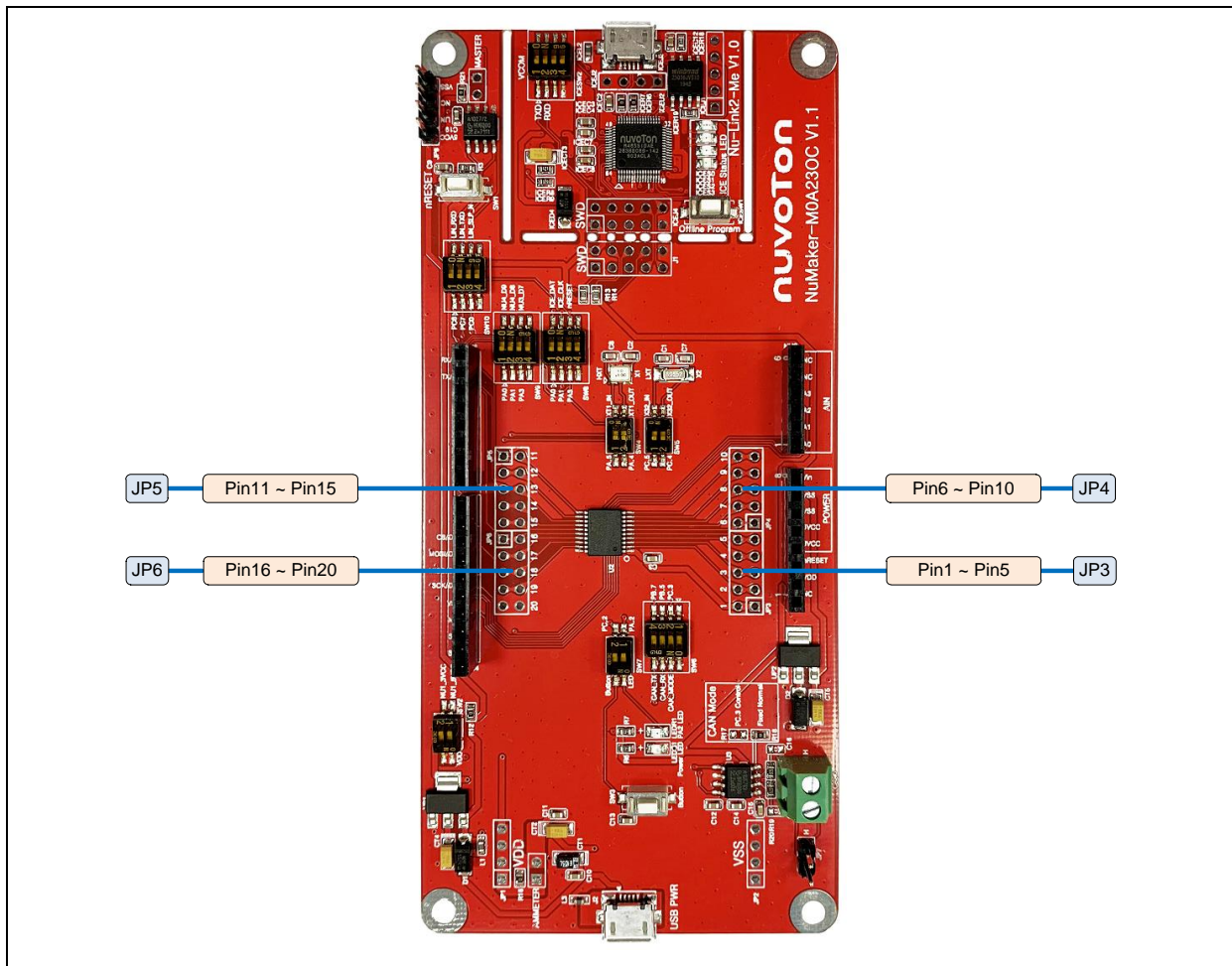


Figure 3-3 M0A230C1AC Extension Connectors

Header		M0A230C1AC	
		Pin No.	Function
JP3	JP3.1	1	V _{DD}
	JP3.2	2	PA.5 / ADC0_CH16 / UART0_nRTS / XT1_IN / CLKO / PWM0_CH0 / PWM0_CH2 / PWM0_CH4 / UART0_TXD / UART0_RXD / USCIO_CLK / USCIO_DAT0 / USCIO_DAT1 / USCIO_CTL0 / USCIO_CTL1 / USC11_CLK / USC11_DAT0 / USC11_DAT1 / USC11_CTL0 / ACMP0_O / ACMP1_O / ADC0_ST / TM0 / TM2 / TM0_EXT / TM2_EXT / UART1_TXD / UART1_RXD / ACMP0_WLAT
	JP3.3	3	PA.4 / ADC0_CH15 / UART0_nRTS / XT1_OUT / CLKO / PWM0_CH1 / PWM0_CH3 / PWM0_CH5 / UART0_TXD / UART0_RXD / USCIO_CLK / USCIO_DAT0 / USCIO_DAT1 / USCIO_CTL0 / USC11_CTL1 / USC11_CLK / USC11_DAT0 / USC11_DAT1 / USC11_CTL0 / ACMP0_O / ACMP1_O / ADC0_ST / TM1 / TM3 / TM1_EXT / TM3_EXT / UART1_TXD / UART1_RXD / ACMP1_WLAT
	JP3.4	4	PA.3 / nRESET / UART0_nCTS / PWM0_CH0 / PWM0_CH2 / PWM0_CH4 / UART0_RXD / USCIO_CLK / USCIO_DAT0 / USCIO_DAT1 / USCIO_CTL0 / USCIO_CTL1 / USC11_CLK / USC11_DAT0 / USC11_DAT1 / USC11_CTL0 / ADC0_ST / TM0 / TM2 / TM0_EXT / TM2_EXT / UART1_RXD / INT0
	JP3.5	5	PC.5 / ADC0_CH14 / X32_IN / UART0_nCTS / CLKO / PWM0_CH1 / PWM0_CH3 / PWM0_CH5 / UART0_TXD / UART0_RXD / USCIO_CLK / USCIO_DAT0 / USCIO_DAT1 / USCIO_CTL0 / USCIO_CTL1 / USC11_CLK / USC11_DAT0 / USC11_DAT1 / USC11_CTL0 / ACMP0_O / ACMP1_O / ADC0_ST / TM1 / TM3 / TM1_EXT / TM3_EXT / UART1_TXD / UART1_RXD / INT1
JP4	JP4.1	6	PC.4 / ADC0_CH13 / X32_OUT / UART0_nCTS / CLKO / PWM0_CH0 / PWM0_CH2 / PWM0_CH4 / UART0_TXD / UART0_RXD / USCIO_CLK / USCIO_DAT0 / USCIO_DAT1 / USCIO_CTL0 / USC11_CTL1 / USC11_CLK / USC11_DAT0 / USC11_DAT1 / USC11_CTL0 / ACMP0_O / ACMP1_O / ADC0_ST / TM0 / TM2 / TM0_EXT / TM2_EXT / UART1_TXD / UART1_RXD / INT2
	JP4.2	7	PC.3 / ADC0_CH12 / ACMP0_N3 / ACMP1_N3 / UART0_nRTS / UART0_nCTS / CLKO / PWM0_CH1 / PWM0_CH3 / PWM0_CH5 / UART0_TXD / UART0_RXD / USCIO_CLK / USCIO_DAT0 / USCIO_DAT1 / USCIO_CTL0 / USCIO_CTL1 / USC11_CLK / USC11_DAT0 / USC11_DAT1 / USC11_CTL0 / ACMP0_O / ACMP1_O / ADC0_ST / TM1 / TM3 / TM1_EXT / TM3_EXT / UART1_TXD / UART1_RXD / INT3
	JP4.3	8	PC.6 / ADC0_CH11 / UART0_nRTS / UART0_nCTS / CLKO / PWM0_CH0 / PWM0_CH2 / PWM0_CH4 / UART0_TXD / UART0_RXD / USCIO_CLK / USCIO_DAT0 / USCIO_DAT1 / USCIO_CTL0 / USC11_CTL1 / USC11_CLK / USC11_DAT0 / USC11_DAT1 / USC11_CTL0 / ACMP0_O / ACMP1_O / ADC0_ST / TM0 / TM2 / TM0_EXT / TM2_EXT / UART1_TXD / UART1_RXD / INT4
	JP4.4	9	PC.7 / ADC0_CH10 / UART0_nRTS / UART0_nCTS / CLKO / PWM0_CH1 / PWM0_CH3 / PWM0_CH5 / UART0_TXD / UART0_RXD / USCIO_CLK / USCIO_DAT0 / USCIO_DAT1 / USCIO_CTL0 / USCIO_CTL1 / USC11_CLK / USC11_DAT0 / USC11_DAT1 / USC11_CTL0 / ACMP0_O / ACMP1_O / ADC0_ST / TM1 / TM3 / TM1_EXT / TM3_EXT / UART1_TXD / UART1_RXD / INT5
	JP4.5	10	PB.7 / ADC0_CH9 / UART0_nRTS / UART0_nCTS / CLKO / PWM0_CH0 / PWM0_CH2 / PWM0_CH4 / UART0_TXD / UART0_RXD / USCIO_CLK / USCIO_DAT0 / USCIO_DAT1 / USCIO_CTL0 / USC11_CTL1 / USC11_CLK / USC11_DAT0 / USC11_DAT1 / USC11_CTL0 / ACMP0_O / ACMP1_O / ADC0_ST / TM0 / TM2 / TM0_EXT / TM2_EXT / UART1_TXD / UART1_RXD / ACMP0_WLAT
JP5	JP5.1	11	PB.6 / ADC0_CH8 / UART0_nRTS / UART0_nCTS / CLKO / PWM0_CH1 / PWM0_CH3 / PWM0_CH5 / UART0_TXD / UART0_RXD / USCIO_CLK / USCIO_DAT0 / USCIO_DAT1 / USCIO_CTL0 / USCIO_CTL1 / USC11_CLK / USC11_DAT0 / USC11_DAT1 / USC11_CTL0 / ACMP0_O / ACMP1_O / ADC0_ST / TM1 / TM3 / TM1_EXT / TM3_EXT / UART1_TXD /

Header		M0A230C1AC	
		Pin No.	Function
JP5			UART1_RXD / ACMP1_WLAT
	JP5.2	12	PB.5 / ADC0_CH7 / UART0_nRTS / UART0_nCTS / CLKO / PWM0_CH0 / PWM0_CH2 / PWM0_CH4 / UART0_TXD / UART0_RXD / USCI0_CLK / USCI0_DAT0 / USCI0_DAT1 / USCI0_CTL0 / USCI1_CTL1 / USCI1_CLK / USCI1_DAT0 / USCI1_DAT1 / USCI1_CTL0 / ACMP0_O / ACMP1_O / ADC0_ST / TM0 / TM2 / TM0_EXT / TM2_EXT / UART1_TXD / UART1_RXD / INT0
	JP5.3	13	PB.4 / ADC0_CH6 / UART0_nRTS / UART0_nCTS / CLKO / PWM0_CH1 / PWM0_CH3 / PWM0_CH5 / UART0_TXD / UART0_RXD / USCI0_CLK / USCI0_DAT0 / USCI0_DAT1 / USCI0_CTL0 / USCI0_CTL1 / USCI1_CLK / USCI1_DAT0 / USCI1_DAT1 / USCI1_CTL0 / ACMP0_O / ACMP1_O / ADC0_ST / TM1 / TM3 / TM1_EXT / TM3_EXT / UART1_TXD / UART1_RXD / UART1_nCTS
	JP5.4	14	PC.2 / ADC0_CH5 / ACMP0_N2 / ACMP1_N2 / UART0_nRTS / UART0_nCTS / CLKO / PWM0_CH0 / PWM0_CH2 / PWM0_CH4 / UART0_TXD / UART0_RXD / USCI0_CLK / USCI0_DAT0 / USCI0_DAT1 / USCI0_CTL0 / USCI1_CTL1 / USCI1_CLK / USCI1_DAT0 / USCI1_DAT1 / USCI1_CTL0 / ACMP0_O / ACMP1_O / ADC0_ST / TM0 / TM2 / TM0_EXT / TM2_EXT / UART1_TXD / UART1_RXD / UART1_nRTS
	JP5.5	15	PC.1 / ADC0_CH4 / ACMP0_N1 / ACMP1_N1 / UART0_nRTS / UART0_nCTS / CLKO / PWM0_CH1 / PWM0_CH3 / PWM0_CH5 / UART0_TXD / UART0_RXD / USCI0_CLK / USCI0_DAT0 / USCI0_DAT1 / USCI0_CTL0 / USCI0_CTL1 / USCI1_CLK / USCI1_DAT0 / USCI1_DAT1 / USCI1_CTL0 / ACMP0_O / ACMP1_O / ADC0_ST / TM1 / TM3 / TM1_EXT / TM3_EXT / UART1_TXD / UART1_RXD
JP6	JP6.1	16	PC.0 / ADC0_CH3 / ACMP1_P0 / UART0_nRTS / UART0_nCTS / CLKO / PWM0_CH0 / PWM0_CH2 / PWM0_CH4 / UART0_TXD / UART0_RXD / USCI0_CLK / USCI0_DAT0 / USCI0_DAT1 / USCI0_CTL0 / USCI1_CTL1 / USCI1_CLK / USCI1_DAT0 / USCI1_DAT1 / USCI1_CTL0 / ACMP0_O / ACMP1_O / ADC0_ST / TM0 / TM2 / TM0_EXT / TM2_EXT / UART1_TXD / UART1_RXD / PWM0_BRAKE0
	JP6.2	17	PA.2 / ADC0_CH2 / UART0_nRTS / UART0_nCTS / CLKO / PWM0_CH1 / PWM0_CH3 / PWM0_CH5 / UART0_TXD / UART0_RXD / USCI0_CLK / USCI0_DAT0 / USCI0_DAT1 / USCI0_CTL0 / USCI1_CTL1 / USCI1_CLK / USCI1_DAT0 / USCI1_DAT1 / USCI1_CTL0 / ACMP0_O / ACMP1_O / ADC0_ST / TM1 / TM3 / TM1_EXT / TM3_EXT / UART1_TXD / UART1_RXD / PWM0_BRAKE1
	JP6.3	18	PA.1 / ADC0_CH1 / ACMP0_N0 / ACMP1_N0 / VREF+ / ICE_CLK / UART0_nCTS / CLKO / PWM0_CH0 / PWM0_CH2 / PWM0_CH4 / UART0_TXD / UART0_RXD / USCI0_CLK / USCI0_DAT0 / USCI0_DAT1 / USCI0_CTL0 / USCI1_CTL1 / USCI1_CLK / USCI1_DAT0 / USCI1_DAT1 / USCI1_CTL0 / ACMP0_O / ACMP1_O / ADC0_ST / TM0 / TM2 / TM0_EXT / TM2_EXT / UART1_TXD / UART1_RXD / PWM0_BRAKE0
	JP6.4	19	PA.0 / ADC0_CH0 / DAC0_OUT / ACMP0_P0 / ICE_DAT / UART0_nCTS / CLKO / PWM0_CH1 / PWM0_CH3 / PWM0_CH5 / UART0_TXD / UART0_RXD / USCI0_CLK / USCI0_DAT0 / USCI0_DAT1 / USCI0_CTL0 / USCI0_CTL1 / USCI1_CLK / USCI1_DAT0 / USCI1_DAT1 / USCI1_CTL0 / ACMP0_O / ACMP1_O / ADC0_ST / TM1 / TM3 / TM1_EXT / TM3_EXT / UART1_TXD / UART1_RXD / PWM0_BRAKE1
	JP6.5	20	Vss

Table 3-2 M0A230C1AC Full-pin Extension Connectors and GPIO Function List

3.3.2 Arduino UNO Compatible Extension Connectors

Figure 3-4 shows the Arduino UNO compatible extension connectors.

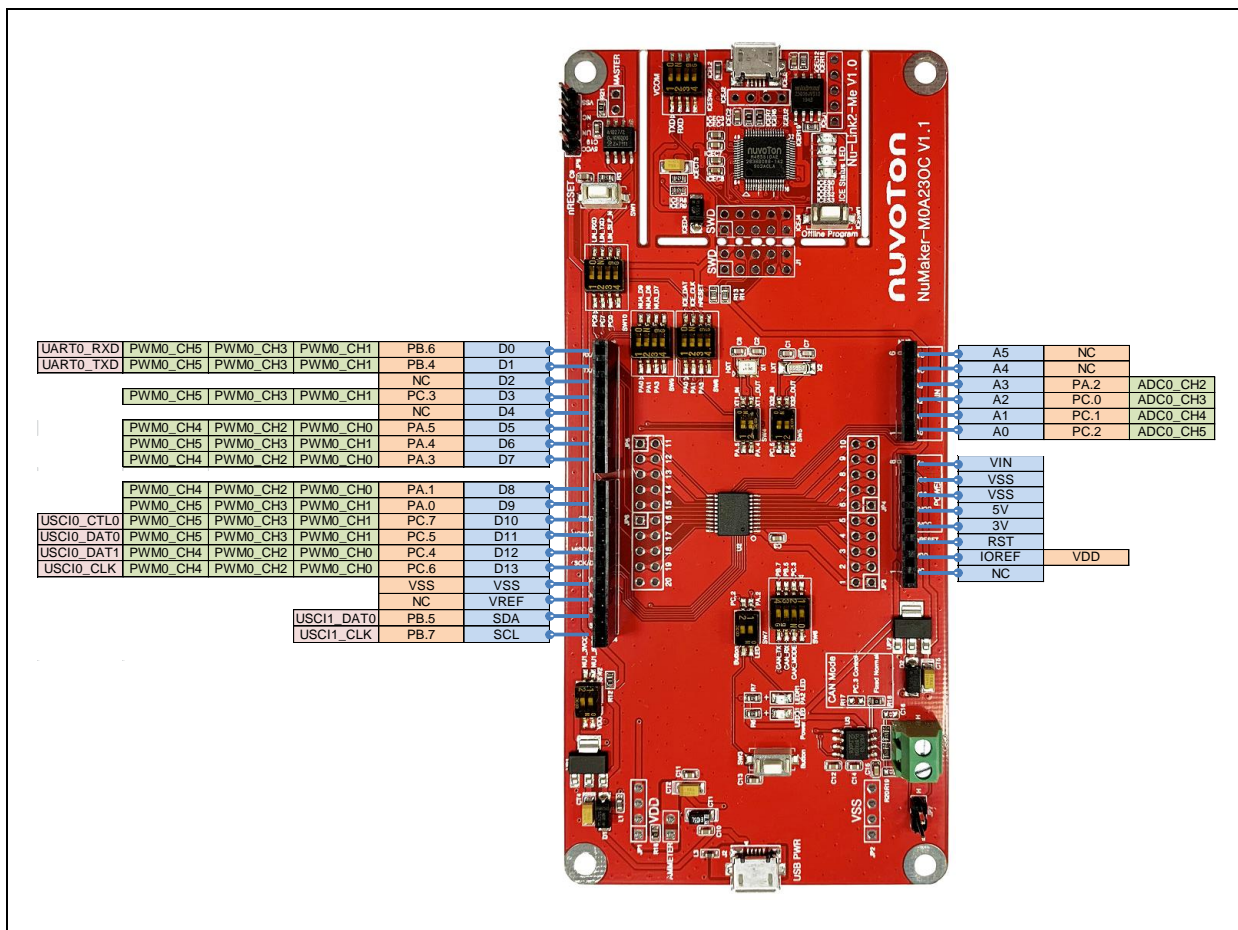


Figure 3-4 Arduino UNO Compatible Extension Connectors

Header		NuMaker-M0A230C		Header		NuMaker-M0A230C	
		Compatible to Arduino UNO	GPIO Pin of M0A230C1AC			Compatible to Arduino UNO	GPIO Pin of M0A230C1AC
N U 3	NU3.1	D0	PB.6	N U 2	NU2.6	A5	NC
	NU3.2	D1	PB.4		NU2.5	A4	NC
	NU3.3	D2	NC		NU2.4	A3	PA.2
	NU3.4	D3	PC.3		NU2.3	A2	PC.0
	NU3.5	D4	NC		NU2.2	A1	PC.1
	NU3.6	D5	PA.5		NU2.1	A0	PC.2
	NU3.7	D6	PA.4	N U 1	NU1.8	VIN	-
	NU3.8	D7	PA.3		NU1.7	VSS	
N U 4	NU4.1	D8	PA.1		NU1.6	VSS	
	NU4.2	D9	PA.0		NU1.5	5V	
	NU4.3	D10	PC.7		NU1.4	3V	
	NU4.4	D11	PC.5		NU1.3	RST	nRESET
	NU4.5	D12	PC.4		NU1.2	IOREF	V _{DD}
	NU4.6	D13	PC.6	NU1.1	NC	-	
	NU4.7	VSS	V _{SS}				
	NU4.8	VREF	NC				
	NU4.9	SDA	PB.5				
	NU4.10	SCL	PB.7				

Table 3-3 Arduino UNO Extension Connectors and M0A230C1AC Mapping GPIO List

3.4 Power Supply Configuration

The NuMaker-M0A230C is able to adopt multiple power supply. External power source include NU1 Vin (7 V to 12 V), V_{DD} (depending on target chip operating voltage), LIN bus through connector JP8 and PC through USB connector. By using switches and voltage regulator, multiple power domains can be created on the NuMaker-M0A230C.

3.4.1 VIN Power Source

Table 3-4 presents the Vin power source.

Connector	Net Name in Schematic	Description
NU1 pin8	NU1_VIN	Board external power source, with voltage range from 7 V to 12 V. The voltage regulator UP2 converts the NU1 pin8 input voltage to 5 V and supplies it to NU1_5VCC.

Table 3-4 Vin Power Source

3.4.2 5 V Power Sources

Table 3-5 presents the 5 V power sources.

Connector	Net Name in Schematic	Description
ICEJ3	USB_HS_VBUS	ICE USB connector supplies 5 V power from PC to M0A21 platform and Nu-Link2-Me.
J2	USB_VBUS	USB connector on NuMaker-M0A230C supplies 5 V power from PC to M0A21 platform and Nu-Link2-Me.
NU1 pin5	NU1_5VCC	ICEJ3, J2 or NU1 pin8 supplies 5 V power to NU1 pin5. NU1 pin5 supplies 5 V power to target chip or Arduino adapter board.
JP8	JP8_5VCC	JP8 on NuMaker-M0A230C supplies 5 V power from LIN bus to M0A21 platform and Nu-Link2-Me.

Table 3-5 5 V Power Sources

3.4.3 3.3 V Power Sources

Table 3-6 presents the 3.3 V power sources.

Voltage Regulator	5 V Source	Description
ICEUP1	USB_HS_VBUS	ICEUP1 converts USB_HS_VBUS to 3.3 V and supplies 3.3 V to M0A21 platform or ICE chip.
UP1	USB_VBUS	UP1 converts USB_VBUS to 3.3 V and supplies 3.3 V to M0A21 platform. Note: SW2.2 (NU1 3VCC) should be switched to ON.
UP1	NU1_5VCC	UP1 converts NU1_5VCC to 3.3 V and supplies 3.3 V to M0A21 platform. Note: SW2.2 (NU1 3VCC) should be switched to ON.
UP1	JP8_5VCC	UP1 converts JP8_5VCC to 3.3 V and supplies 3.3 V to M0A21 platform. Note: SW2.2 (NU1 3VCC) should be switched to ON.

Table 3-6 3.3 V Power Sources

3.4.4 Power Connectors

Table 3-7 presents the power connectors.

Connector	Description
JP1	V _{DD} connector on the NuMaker-M0A230C.
JP2	V _{SS} connector on the NuMaker-M0A230C.

Table 3-7 Power Connectors

3.4.5 USB Connectors

Table 3-8 presents the USB connectors.

Connector	Description
ICEJ3	ICE USB connector on Nu-Link2-Me for power supply, debugging and programming from PC.
J2	USB FS connector on NuMaker-M0A230C for power supply.

Table 3-8 USB Connectors

3.4.6 Power Switches

Table 3-9 presents the power switches.

Switch	Description
ICEJPR1	Configures the target chip operating voltage at 1.8 V / 3.3 V / 5 V. Note: M0A21 operating voltage range is from 2.4 V to 5.5 V. Do not switch ICEJPR1 (MCUVCC) to 1.8 V.
ICEJPR2	Configures the ICE chip operating voltage at 1.8 V / 3.3 V.
SW2	Configures the target chip operating voltage at 3.3 V / 5 V.

Table 3-9 Power Switches

3.4.7 Power Supply Models

3.4.7.1 External Power Supply through Nu-Link2-Me to Target Chip

The external power supply source on Nu-Link2-Me is shown in Figure 3-5.

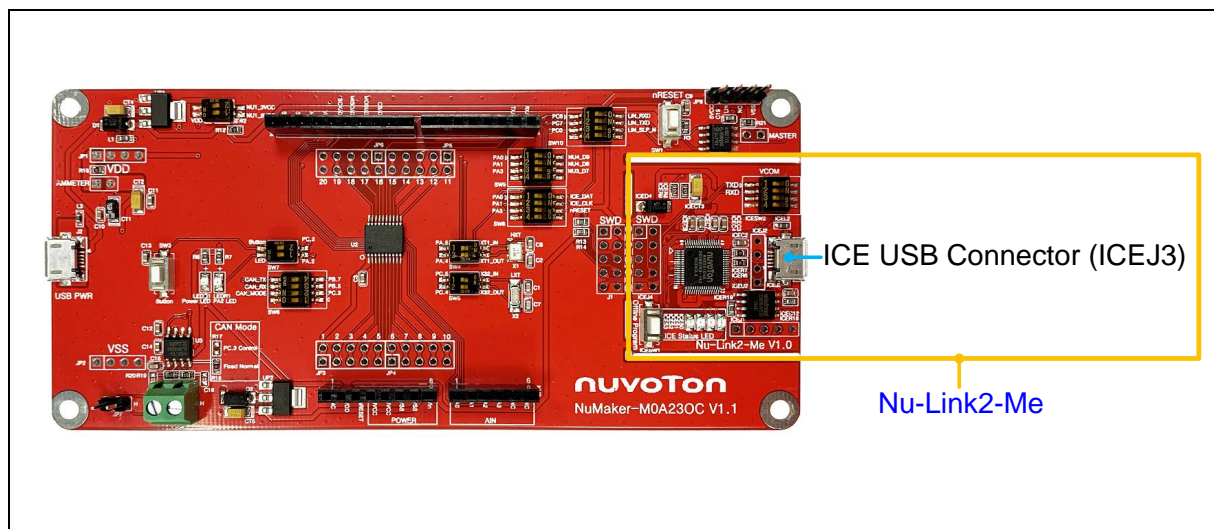


Figure 3-5 External Power Supply Sources on Nu-Link2-Me

To use ICEJ3 as external power supply source with Nu-Link2-Me, please follow the below steps:

1. Solder the resistor on ICEJPR1 (MCUVCC) depends on the target chip operating voltage.
2. Solder the resistor on ICEJPR2 (ICEVCC) depends on the ICE chip operating voltage.
3. Switch the SW2 to OFF.
4. Connect the external power supply to ICEJ3.

Table 3-10 presents all power models when supplies external power through Nu-Link2-Me. The Nu-Link2-Me external power sources are highlighted in yellow.

Model	Target Chip Voltage	ICEJ3	ICEJPR1 (MCUVCC) Selection ^[1]	ICEJPR2 (ICEVCC) Selection ^[2]	ICE Chip Voltage	SW2 Selection	J2	Vin	JP1
1	3.3 V	Connect to PC	3.3 V (default)	3.3 V (default)	3.3 V	Off	X	X	3.3 V output
2	5 V	Connect to PC	5 V	3.3 V (default)	3.3 V	Off	X	X	5 V output

Note:

1. 0 Ω should be soldered between ICEJPR1's MCVCC and 3.3 V / 5 V.
2. 0 Ω should be soldered between ICEJPR2's ICEVCC and 3.3 V.
3. X: Unused.

Table 3-10 Supply External Power through Nu-Link2-Me

3.4.7.2 External Power Supply through M0A21 platform to Target Chip

The external power supply sources on M0A21 platform are shown in Figure 3-6.

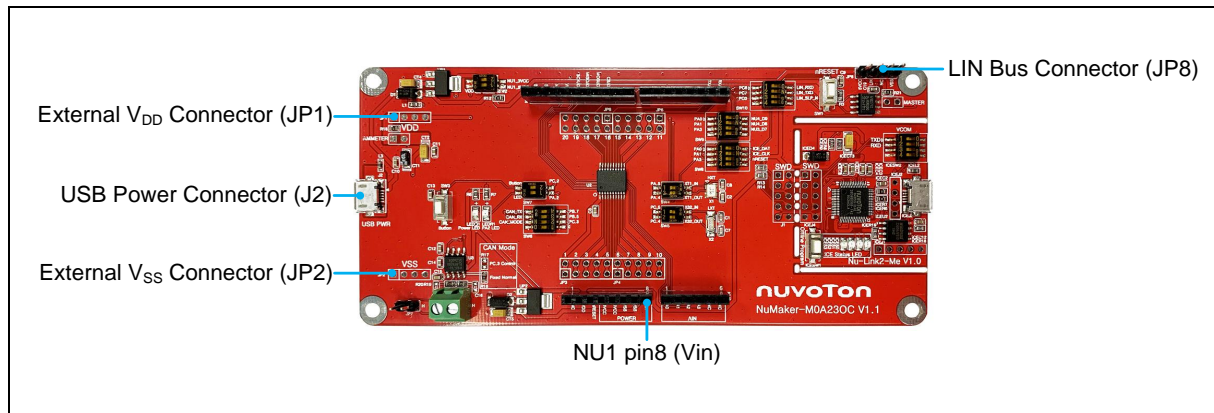


Figure 3-6 External Power Supply Sources on M0A21 platform

To use Vin, J2 or JP8 as external power supply source, please follow the below steps:

1. Switch the SW2 depends on the target chip operating voltage.
2. Remove the resistor on ICEJPR1 (MCUVCC).
3. Solder the resistor on ICEJPR2 (ICEVCC) depends on the ICE chip operating voltage.
4. Connect the external power supply to Vin, J2 or JP8.

To use JP1 as external power supply source, please follow the below steps:

1. Switch the SW2 to OFF.
2. Remove the resistor on ICEJPR1 (MCUVCC).
3. Solder the resistor on ICEJPR2 (ICEVCC) depends on the ICE chip operating voltage.
4. Connect ICEJ3 to PC.
5. Connect the external power supply to JP1.

To use Vin, J2 or JP8 as external power supply source with Nu-Link2-Me detached from NuMaker-M0A230C, please follow the below steps:

1. Switch the SW2 depends on the target chip operating voltage.
2. Detach the Nu-Link2-Me from NuMaker-M0A230C.
3. Connect the external power supply to Vin, J2 or JP8.

To use JP1 as external power supply source with Nu-Link2-Me detached from NuMaker-M0A230C, please follow the below steps:

1. Switch the SW2 to OFF.
2. Detach the Nu-Link2-Me from NuMaker-M0A230C.
3. Connect the external power supply to JP1.

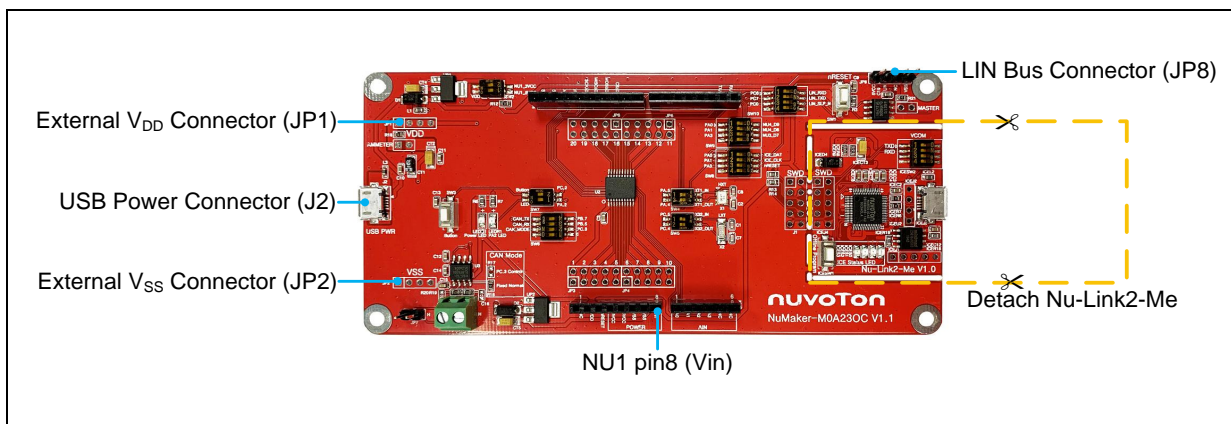


Figure 3-7 Detach the Nu-Link2-Me from NuMaker-M0A230C

Table 3-11 presents all power models when supplies external power through M0A21 platform. The M0A21 platform external power sources are highlighted in yellow.

Model	Target Chip Voltage	Vin ^[1]	J2 ^[1]	JP8 ^[1]	ICEJ3	SW2 Selection	JP1 ^[2]	ICEJPR1 (MCUVCC) Selection ^[3]	ICEJPR2 (ICEVCC) Selection ^[4]	ICE Chip Voltage ^[5]
3	3.3 V	7 V ~ 12 V Input	X	X	X	NU1 3VCC	3.3 V output	Remove resistor	3.3 V	3.3 V
4	3.3 V	X	Connect to PC	X	X	NU1 3VCC	3.3 V output	Remove resistor	3.3 V	3.3 V
	3.3	X	X	Connect to LIN bus	X	NU1 3VCC	3.3 V output	Remove resistor	3.3 V	3.3 V
5	5 V	7 V ~ 12 V Input	X	X	X	NU1 5VCC	5 V output	Remove resistor	3.3 V	3.3 V
6	5 V	X	Connect to PC	X	X	NU1 5VCC	5 V output	Remove resistor	3.3 V	3.3 V
7	5V	X	X	Connect to LIN bus	X	NU1 5VCC	5 V output	Remove resistor	3.3 V	3.3 V
8	2.4 V ~ 5.5 V	X	X	X	Connect to PC	OFF	DC Input 2.4 V ~ 5.5 V	Remove resistor	1.8 / 3.3 V	1.8 / 3.3 V
9	2.4 V ~ 5.5 V	X	X	X	Nu-Link2-Me removed	OFF	DC Input 2.4 V ~ 5.5 V	X	X	X

Note:

1. The Vin input voltage will be converted by voltage regulator UP2 to 5 V. Supply external power to Vin, J2 or JP8 can provide 5 V to NU1 pin5 (5V) and 3.3 V to NU1 pin4 (3VCC).
2. JP1 external power input only provides voltage to target chip.
3. 0 Ω should be removed from ICEJPR1's MCVCC and 1.8 V / 3.3 V / 5 V.
4. 0 Ω should be soldered between ICEJPR2's ICEVCC and 1.8 V / 3.3 V.
5. The ICE chip voltage should be close to the target chip voltage.
6. X: Unused

Table 3-11 Supply External Power for M0A21 Platform

3.5 Ammeter Connector

Table 3-12 presents the ammeter connector.

Connector	Description
AMMETER	Connector for user to measure the target chip power consumption easily. User needs to remove the R16 resistor.

Table 3-12 Ammeter Connector

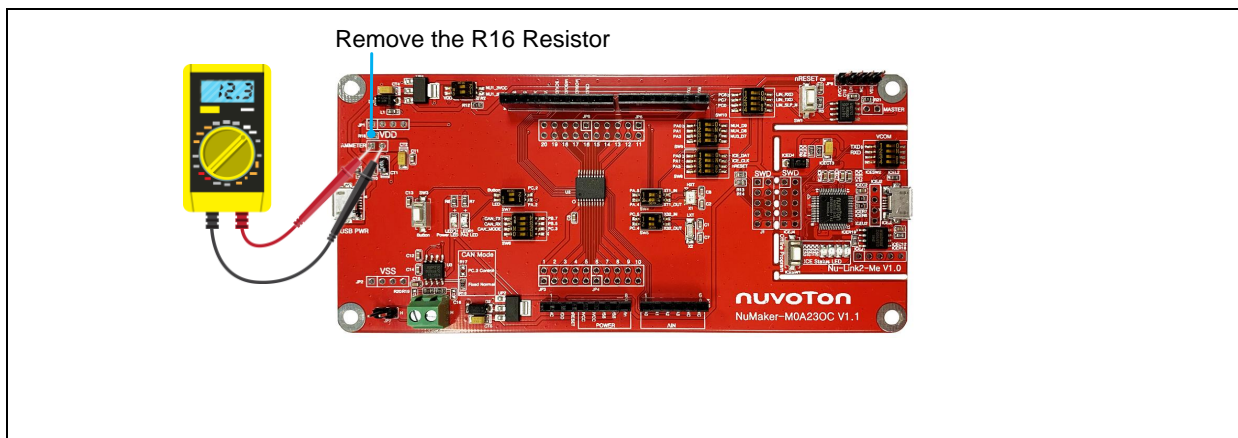


Figure 3-8 Wiring between Ammeter Connector and Ammeter

3.6 Function Switches

Table 3-13 presents the function switches.

Component	Description
SW4	Switch both SW4.1 and SW4.2 to ON to enable PA.4 and PA.5 to external 12 MHz crystal.
SW5	Switch both SW5.1 and SW5.2 to ON to enable PC.4 and PC.5 to external 32.768 kHz crystal.
SW6	Switch both SW6.3 and SW6.4 to ON to enable PB.5 and PB.7 to CAN transceiver. Switch SW6.2 to ON to enable PC.3 to control CAN mode.
SW7	Switch SW7.1 to ON to enable PA.2 to LEDR1. Switch SW7.2 to ON to enable PC.2 to Button (SW3).
SW8	Switch SW8.1, SW8.2 and SW8.3 to ON to enable PA.0, PA.1 and PA.3 to SWD interface (ICE_DAT, ICE_CLK and nRESET). Note: Do not switch SW9 at the same time for safety.
SW9	Switch SW9.1, SW9.2 and SW9.3 to ON to enable PA.0, PA.1 and PA.3 to Arduino interface (D7 ~ D9). Note: Do not switch SW8 at the same time for safety.
SW10	Switch both SW10.1 and SW10.2 to ON to enable PC.6 and PC.7 to LIN transceiver. Switch SW10.3 to ON to enable PC.0 to control LIN mode.

Table 3-13 Function Switches

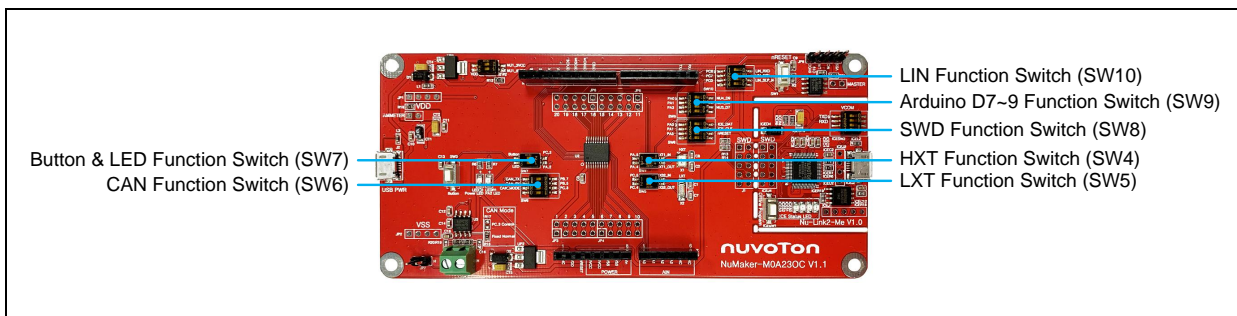


Figure 3-9 Function Switches on NuMaker-M0A230C

3.7 CAN Mode Selection

Table 3-14 presents all selection to control operating mode of CAN transceiver. The control sources are highlighted in yellow.

Model	CAN Operating Mode	R18	R17	PC.3	SW6.3	SW6.4	SW6.2
1	Disable	X	X	X	OFF	OFF	OFF
2	Normal	0Ω	X	X	ON	ON	OFF
3	Normal	X	0Ω	Low	ON	ON	ON
4	Silent	X	0Ω	High	ON	ON	ON

Note: X: Unused.

Table 3-14 Operating Mode of CAN Transceiver

3.8 LIN Mode Selection

Table 3-15 presents all selection to control operating mode of LIN transceiver. The control sources are highlighted in yellow.

Model	LIN Operating Mode	R21	MASTER	PC.0	SW10.1	SW10.2	SW10.3
1	Reset	X	X	X	OFF	OFF	OFF
2	Master Normal	0Ω	X	High	ON	ON	ON
3	Master Sleep	0Ω	X	Low	ON	ON	ON
4	Master Normal	X	0Ω	High	ON	ON	ON
5	Master Sleep	X	0Ω	Low	ON	ON	ON
6	Slave Normal	X	X	High	ON	ON	ON
7	Slave Sleep	X	X	Low	ON	ON	ON

Note: X: Unused.

Table 3-15 Operating Mode of LIN Transceiver

3.9 Push Buttons

Table 3-16 presents the push buttons.

Component	Description
ICESW1	Offline program button to start offline ICP programming the target chip.
SW1	Reset button to reset the target chip.
SW3	Customize button is connected to the M0A230C1AC PC.2 if SW7.2 switches to ON.

Table 3-16 Push-Buttons

3.10 LEDs

Table 3-17 presents the LEDs.

Component	Description
Power LED	The power LED indicates that the NuMaker-M0A230C is powered.
PB14 LED	The LED is connected to the M0A230C1AC PA.2 if SW7.1 switches to ON.
ICES0, ICES1, ICES2 and ICES3	Nu-Link2-Me status LED.

Table 3-17 LEDs

3.11 Nu-Link2-Me

The Nu-Link2-Me is an attached on-board debugger and programmer. The Nu-Link2-Me supports on-chip debugging, online and offline ICP programming through SWD interface. The Nu-Link2-Me also supports virtual COM port (VCOM) for printing debug messages on PC. Besides, the programming status can be shown on the built-in LEDs. Further, the Nu-Link2-Me can be detached from the development board to become a stand-alone mass production programmer. For more information about Nu-Link2-Me, please refer to Nu-Link2-Pro Debugger and Programmer User Manual.

3.11.1 VCOM Switches

Table 3-18 presents how to set the VCOM function by ICESW2.

ICESW2		
Pin	Function	Description
1	TXD	On: Connect target chip PB.4 (UART0_TXD) to Nu-Link2-Me. Off: Disconnect target chip PB.4 (UART0_TXD) to Nu-Link2-Me.
2	RXD	On: Connect target chip PB.6 (UART0_RXD) to Nu-Link2-Me. Off: Disconnect target chip PB.6 (UART0_RXD) to Nu-Link2-Me.
Note: Pin 3 and 4 is unused.		

Table 3-18 VCOM Function of Nu-Link2-Me

3.11.2 Status LEDs

Table 3-19 presents the status LEDs patterns for different operation on Nu-Link2-Me.

Operation Status	Status LED			
	ICES0	ICES1	ICES2	ICES3
Power on	Flash x 3	Flash x 3	Flash x 3	Flash x 3
Connected to IDE/NuTool	Flash x 3	Flash x 3	Flash x 3	On
ICE online (Not connected to a target chip)	On	-	Flash x 3	Flash x 3
ICE online (Connected to a target chip)	On	-	-	On
ICE online (Failed to connect to a target chip)	On	Any	Flash	On
During Offline Programming	-	On	-	Flash
Offline Programming Completed	On	-	-	-
Offline Programming Completed (Auto mode)	On	On	-	-
Offline Programming Failed	On	Flash	-	-

Table 3-19 Operation Status LED Patterns

4 QUICK START

4.1 Toolchains Support

Install the preferred toolchain. Please make sure at least one of the toolchains has been installed.

- [KEIL MDK Nuvoton edition M0/M23](#)
- [IAR EWARM](#)
- [NuEclipse GCC \(for Windows\)](#)
- [NuEclipse GCC \(for Linux\)](#)

4.2 Nuvoton Nu-Link Driver Installation

Download and install the latest Nuvoton Nu-Link Driver.

- Download and install [Nu-Link Keil Driver](#) when using Keil MDK.
- Download and install [Nu-Link IAR Driver](#) when using IAR EWARM.
- Skip this step when using NuEclipse.

Please install the Nu-Link USB Driver as well at the end of the installation. The installation is presented in Figure 4-1 and Figure 4-2.

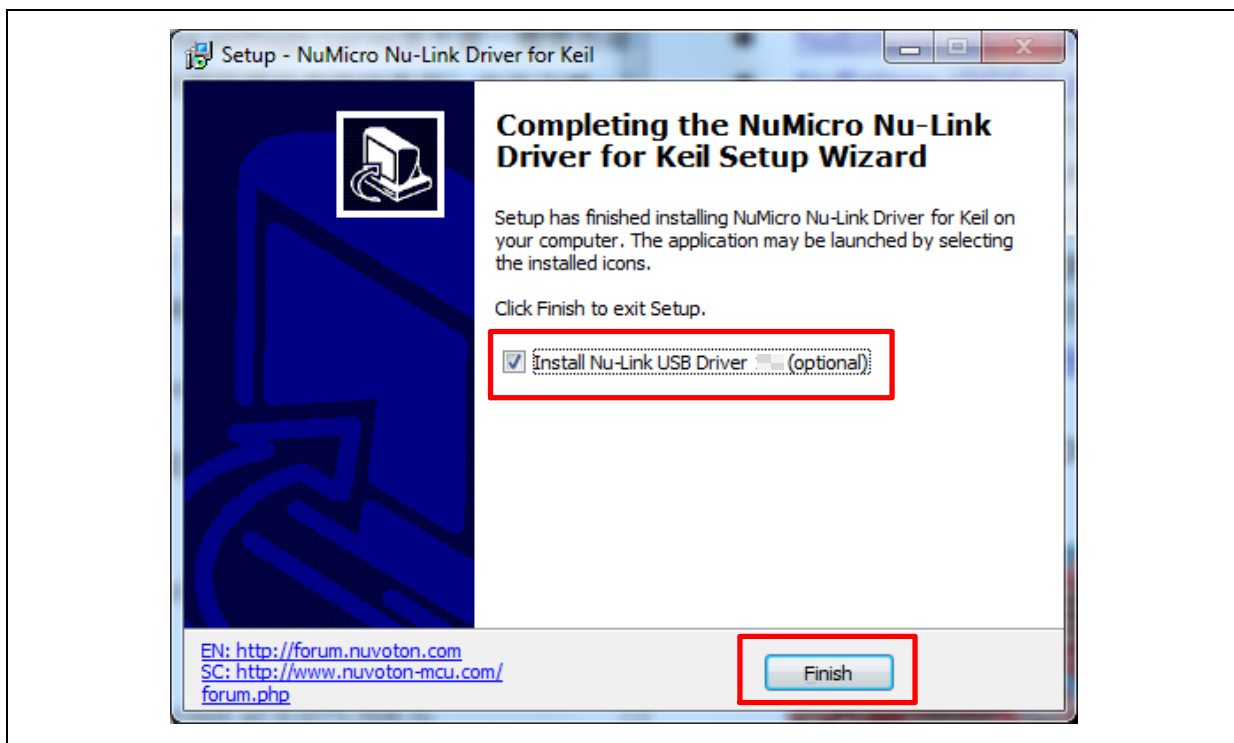


Figure 4-1 Nu-Link USB Driver Installation Setup



Figure 4-2 Nu-Link USB Driver Installation

4.3 BSP Firmware Download

Download and unzip the [Board Support Package \(BSP\)](#).

4.4 Hardware Setup

1. Open the virtual COM (VCOM) function by changing Nu-Link2-Me VCOM Switch No. 1 and 2 to ON.

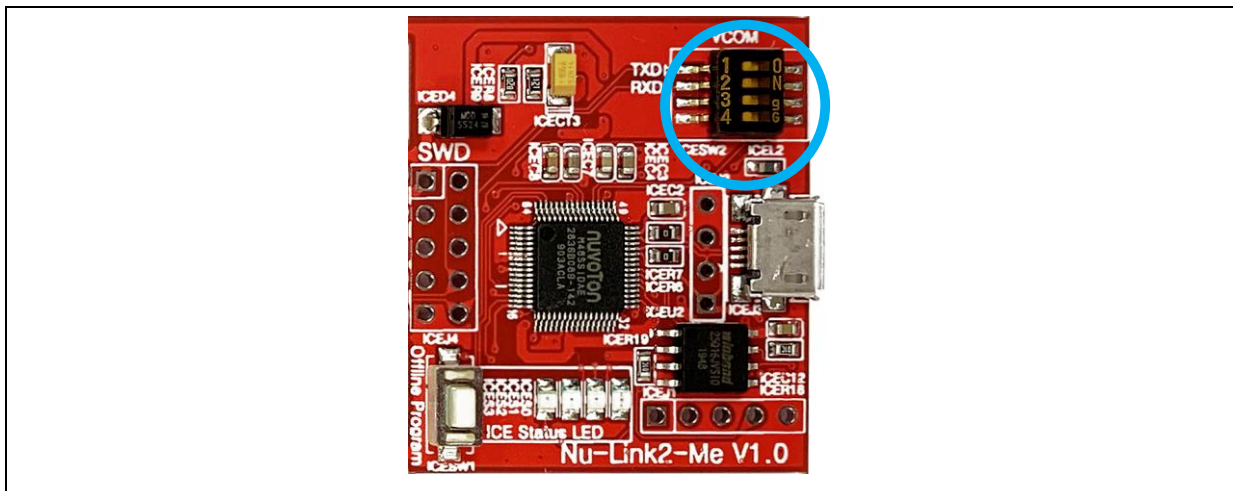


Figure 4-3 Open VCOM Function

2. Connect the ICE USB connector shown in Figure 4-4 to the PC USB port through USB cable.

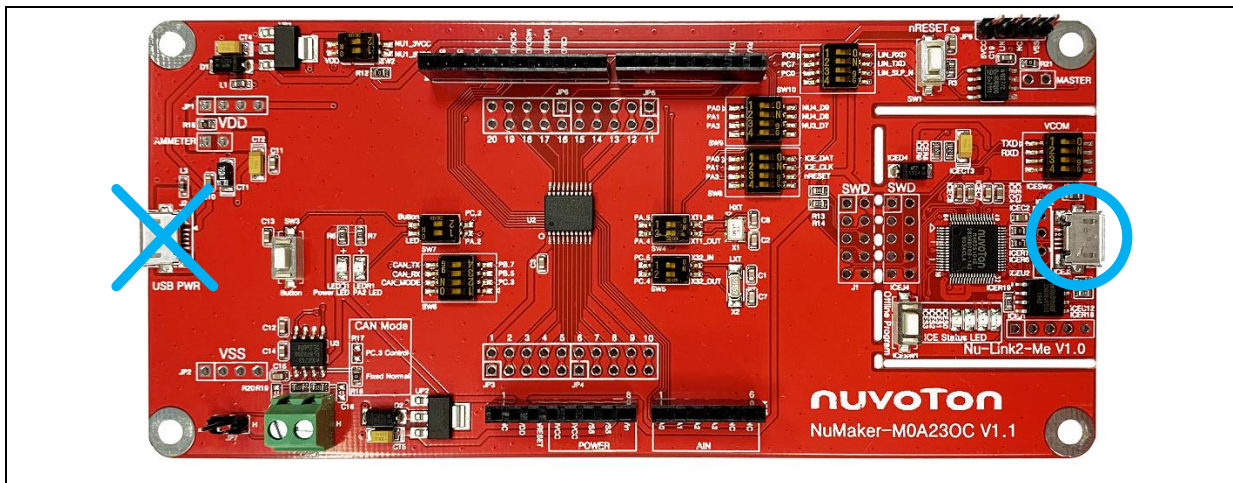


Figure 4-4 ICE USB Connector

- 3. Find the “Nuvoton Virtual COM Port” on the Device Manger as Figure 4-5.

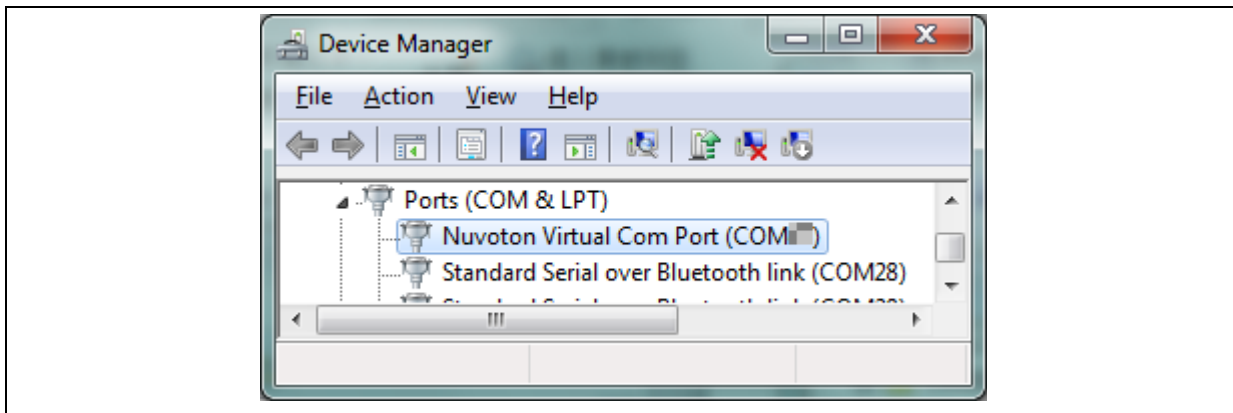


Figure 4-5 Device Manger

- 4. Open a serial port terminal, PuTTY for example, to print out debug message. Set the speed to 115200. Figure 4-6 presents the PuTTY session setting.

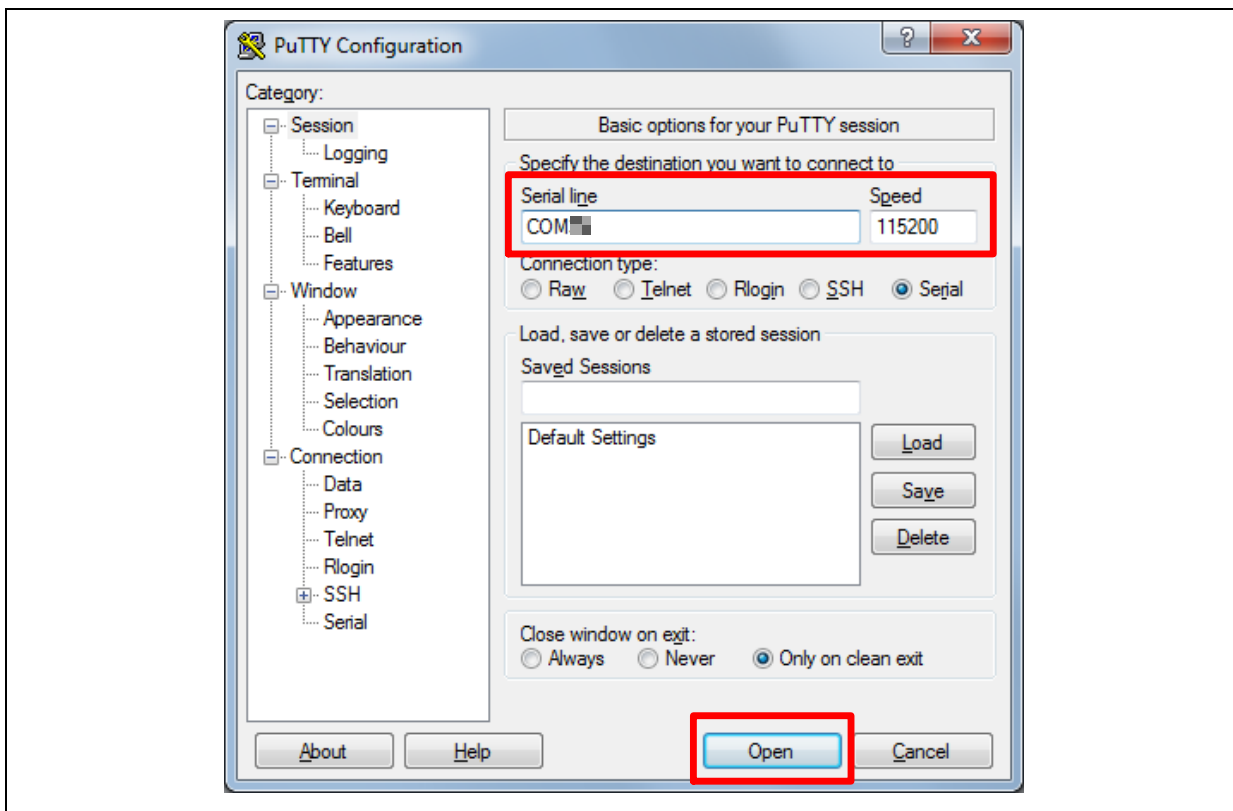


Figure 4-6 PuTTY Session Setting

4.5 Find the Example Project

Use the “Template” project as an example. The project can be found under the BSP folder as shown in Figure 4-7.

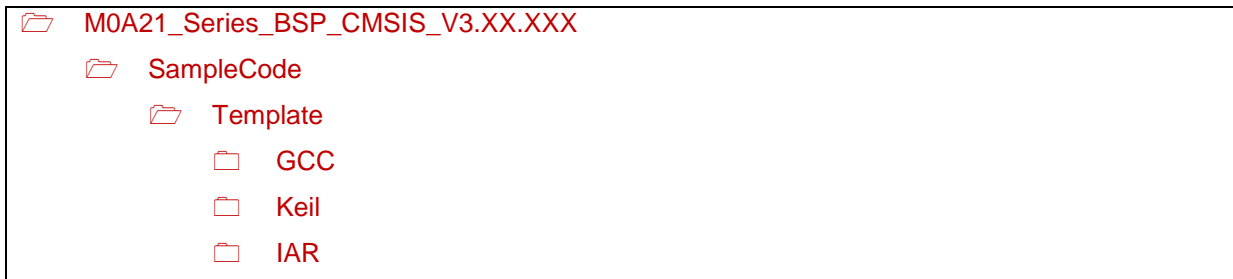


Figure 4-7 Template Project Folder Path

4.6 Execute the Project under Toolchains

Open and execute the project under the toolchain. The section 4.6.1, 4.6.2, and 4.6.3 describe the steps of executing project in Keil MDK, IAR EWARM and NuEclipse, respectively.

4.6.1 Keil MDK

This section provides steps to beginners on how to run a project by using Keil MDK.

1. Double click the “Template.uvproj” to open the project.

Note: If Figure 4-8 warning message jumps out, please migrate to version 5 formats as shown in Figure 4-9. The “.uvproj” filename extension will change to “.uvprojx”.

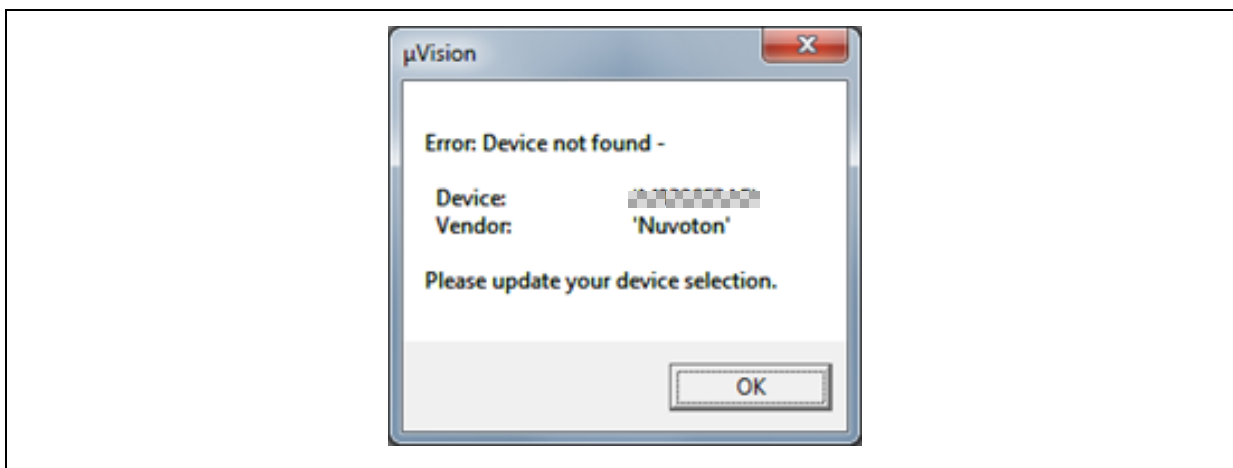


Figure 4-8 Warning Message of “Device not found”

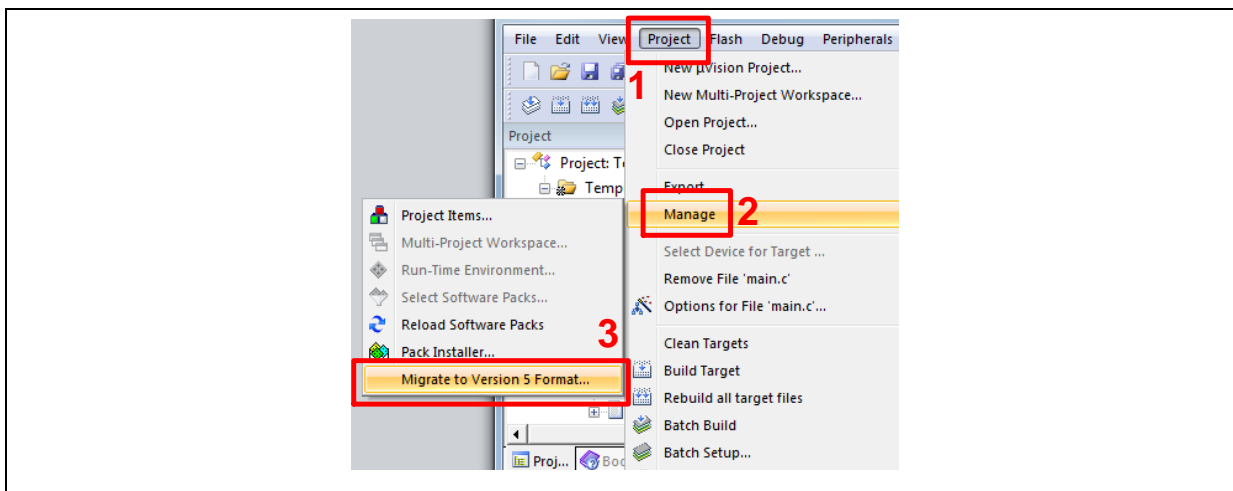


Figure 4-9 Project File Migrate to Version 5 Format

2. Make sure the debugger is “Nuvoton Nu-Link Debugger” as shown in Figure 4-10 and Figure 4-11.

Note: If the dropdown menu in Figure 4-10 does not contain “Nuvoton Nu-Link Debugger” item, please rework section 4.2.

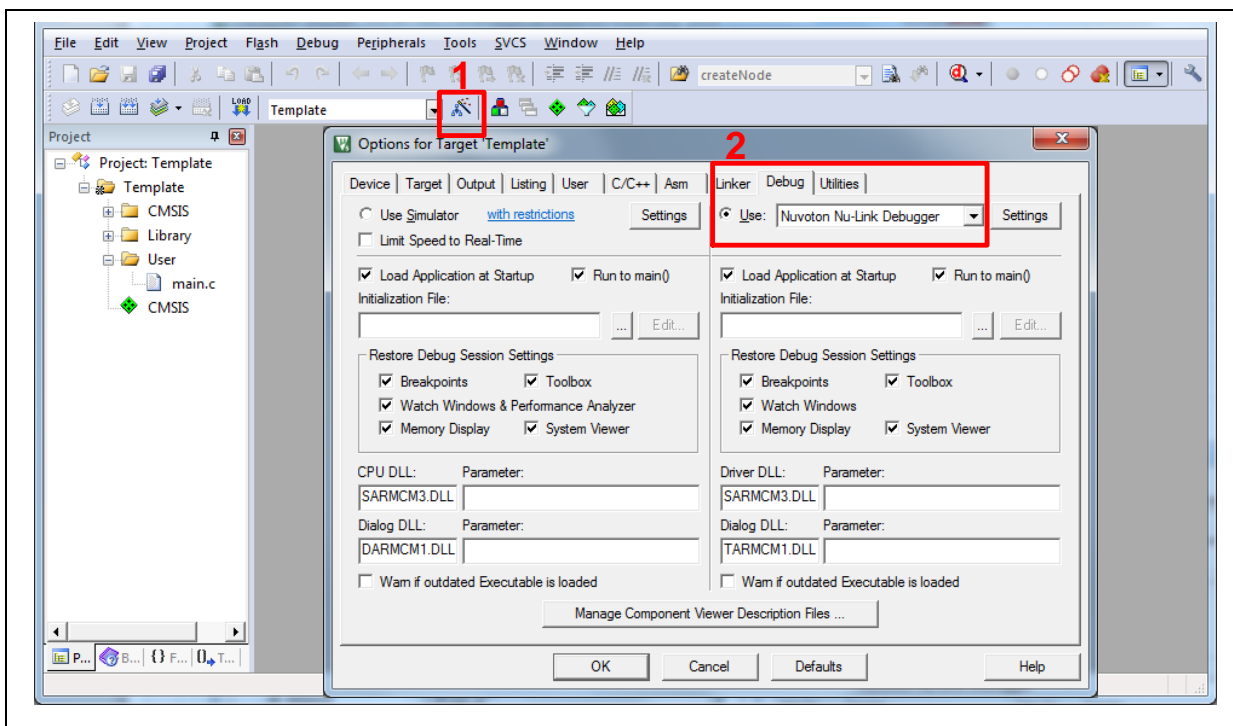


Figure 4-10 Debugger Setting in Options Window

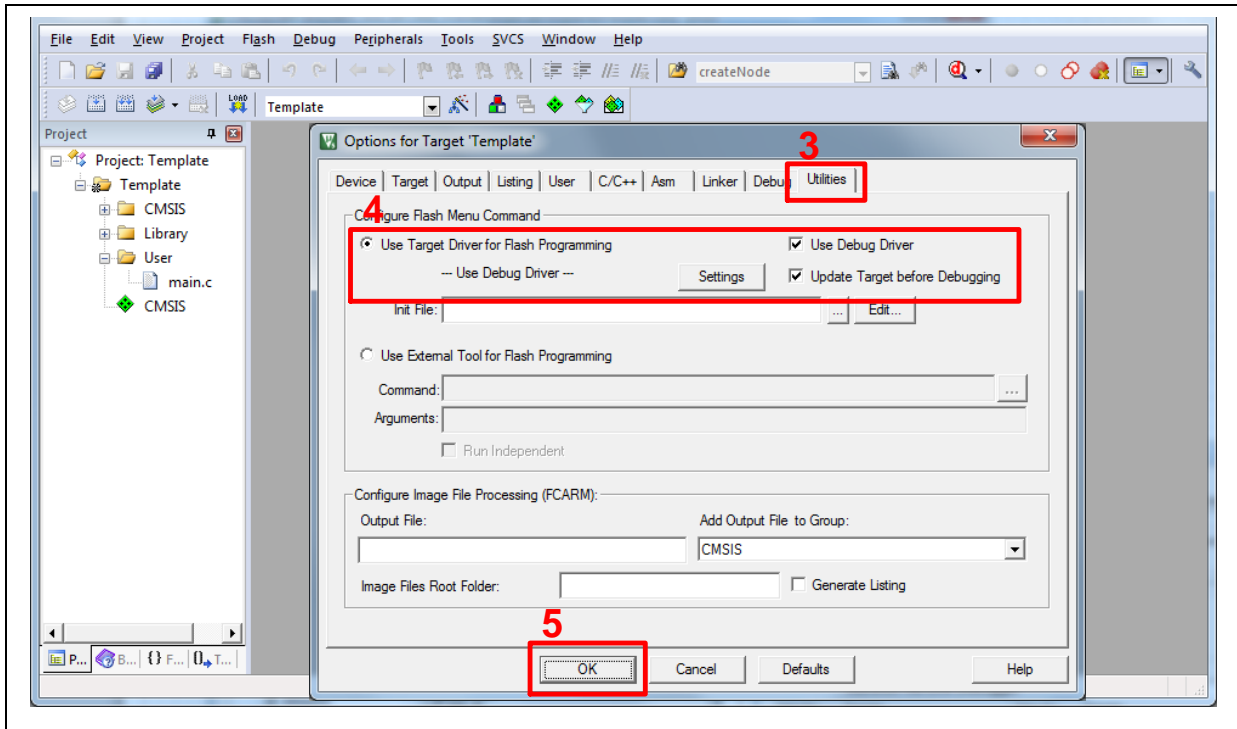


Figure 4-11 Programming Setting in Options Window

3. Rebuild all target files. After successfully compile the project, download code to the flash memory. Click “Start/Stop Debug Section” button can enter debug mode.

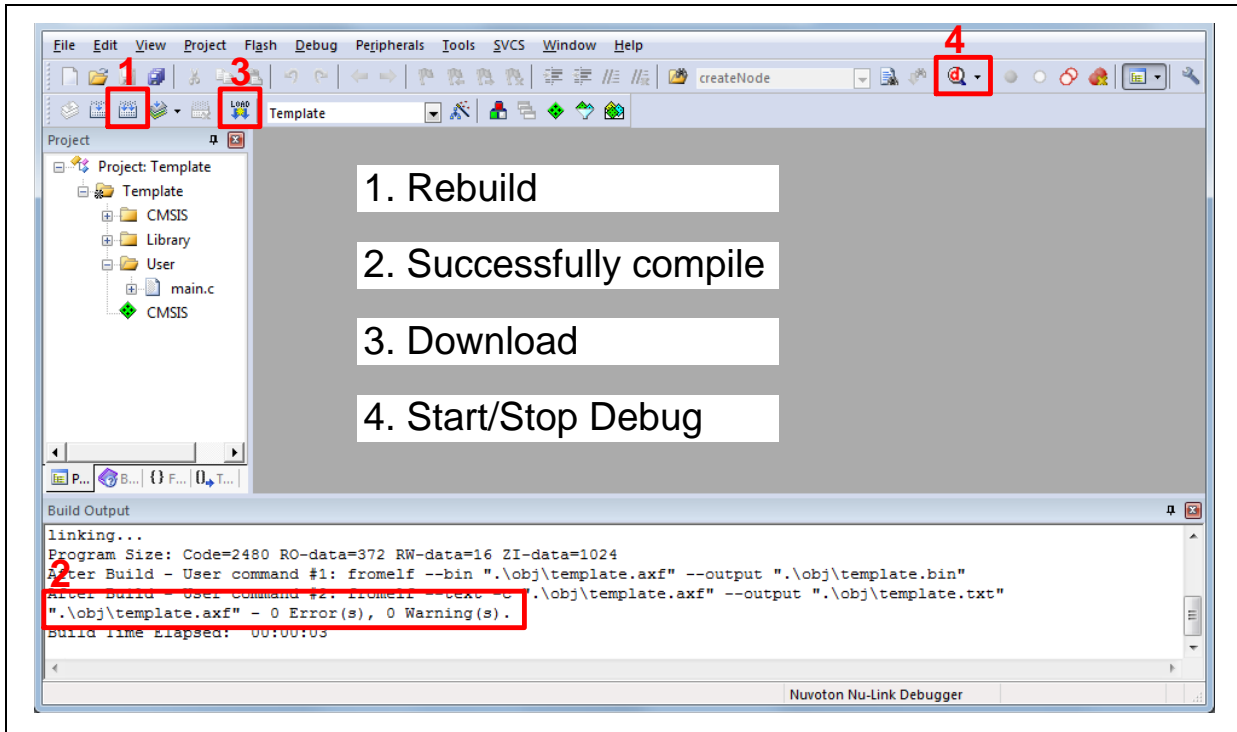


Figure 4-12 Compile and Download the Project

- Figure 4-13 shows the debug mode under Keil MDK. Click “Run” and the debug message will be printed out as shown in Figure 4-14. User can debug the project under debug mode by checking source code, assembly language, peripherals’ registers, and setting breakpoint, step run, value monitor, etc.

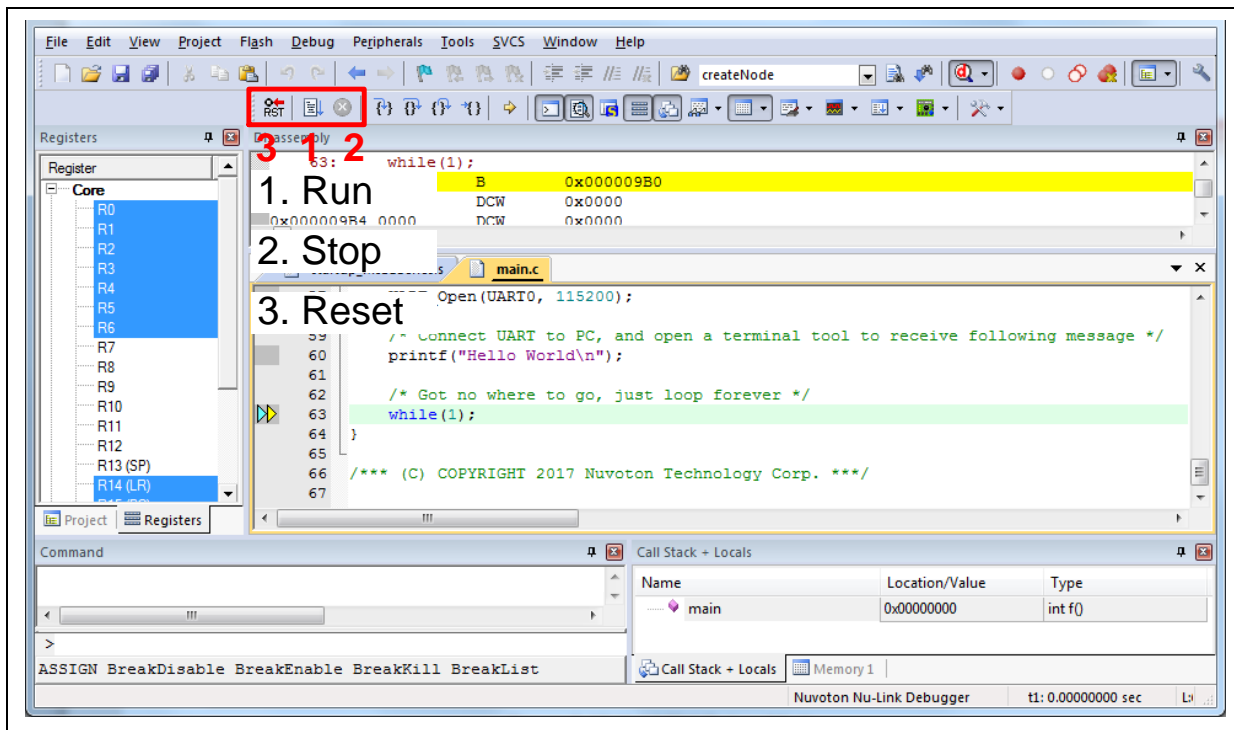


Figure 4-13 Keil MDK Debug Mode

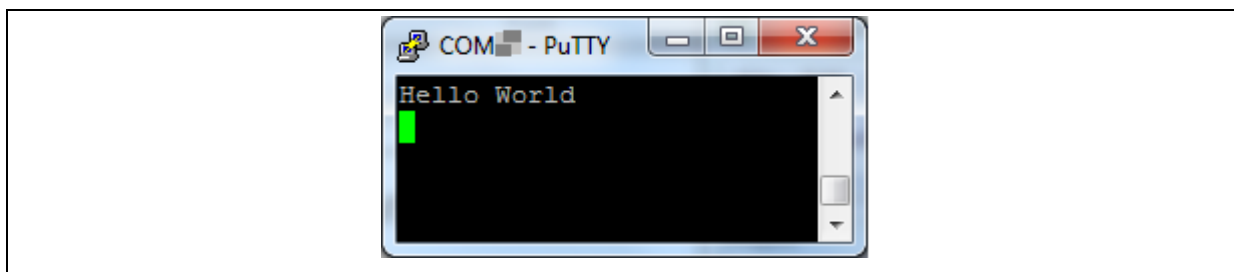


Figure 4-14 Debug Message on Serial Port Terminal Windows

4.6.2 IAR EWARM

This section provides steps to beginners on how to run a project by using IAR EWARM.

1. Double click the “Template.eww” to open the project.
2. Make sure the toolbar contain “Nu-Link” item as shown in Figure 4-15.

Note: If the toolbar does not contain “Nu-Link” item, please rework section 4.2.

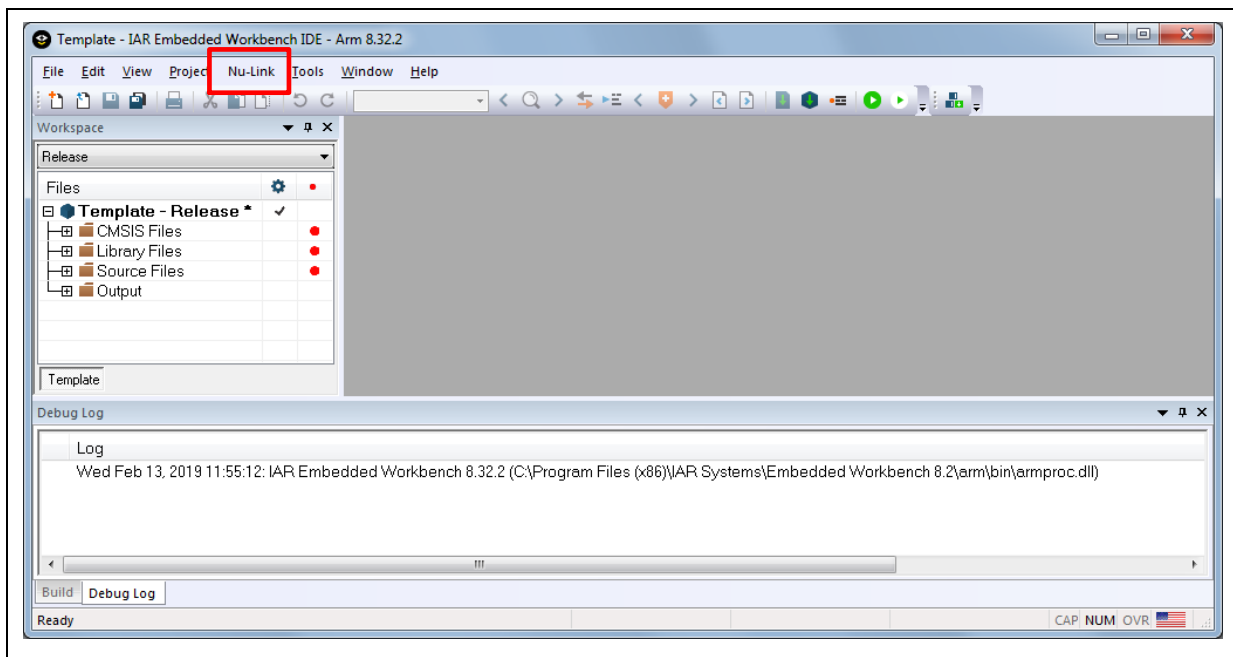


Figure 4-15 IAR EWARM Window

3. Make target file as presented in Figure 4-16. After successfully compile the project, download code to the flash memory and enter debug mode.

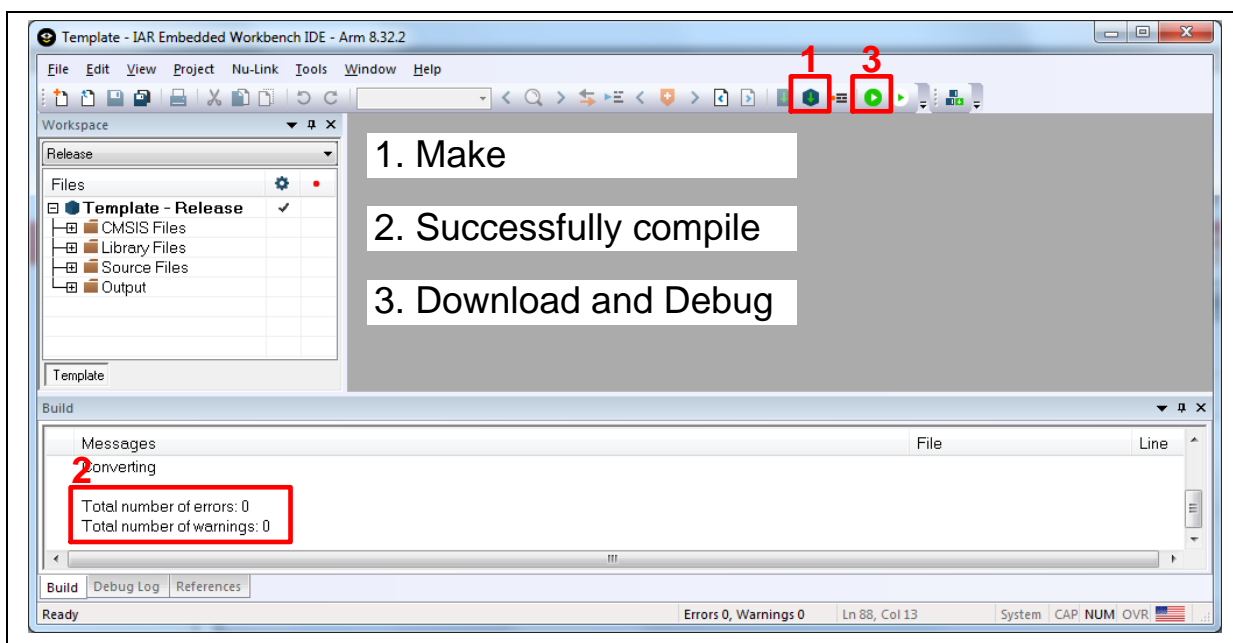


Figure 4-16 Compile and Download the Project

- Figure 4-17 shows the debug mode under IAR EWARM. Click “Go” and the debug message will be printed out as shown in Figure 4-18. User can debug the project under debug mode by checking source code, assembly language, peripherals’ registers, and setting breakpoint, step run, value monitor, etc.

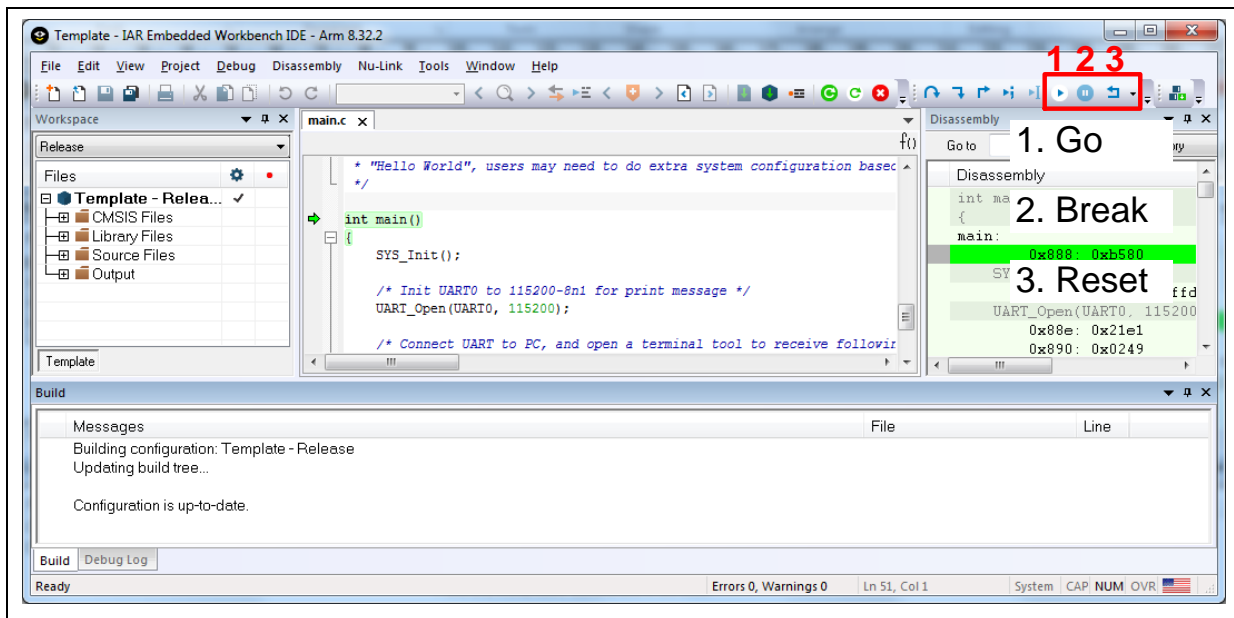


Figure 4-17 IAR EWARM Debug Mode

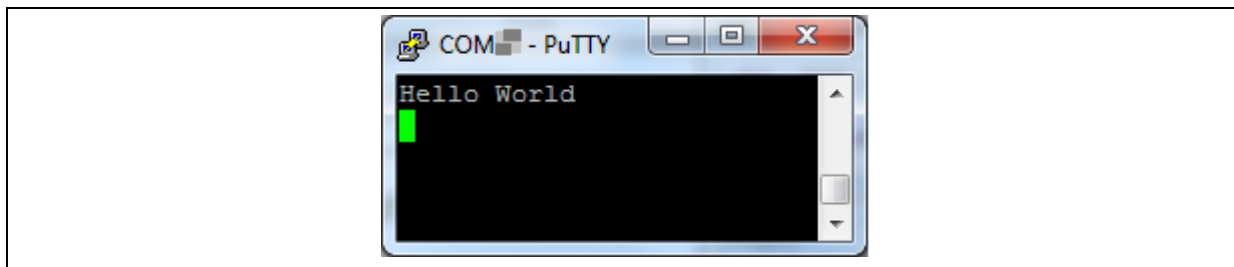


Figure 4-18 Debug Message on Serial Port Terminal Windows

4.6.3 NuEclipse

This section provides steps to beginners on how to run a project by using NuEclipse. Please make sure the filenames and project folder path contain neither invalid character nor space.

1. Double-click NuEclipse.exe to open the toolchain.
2. Import the “Template” project by following the steps presented in Figure 4-19 and Figure 4-20.

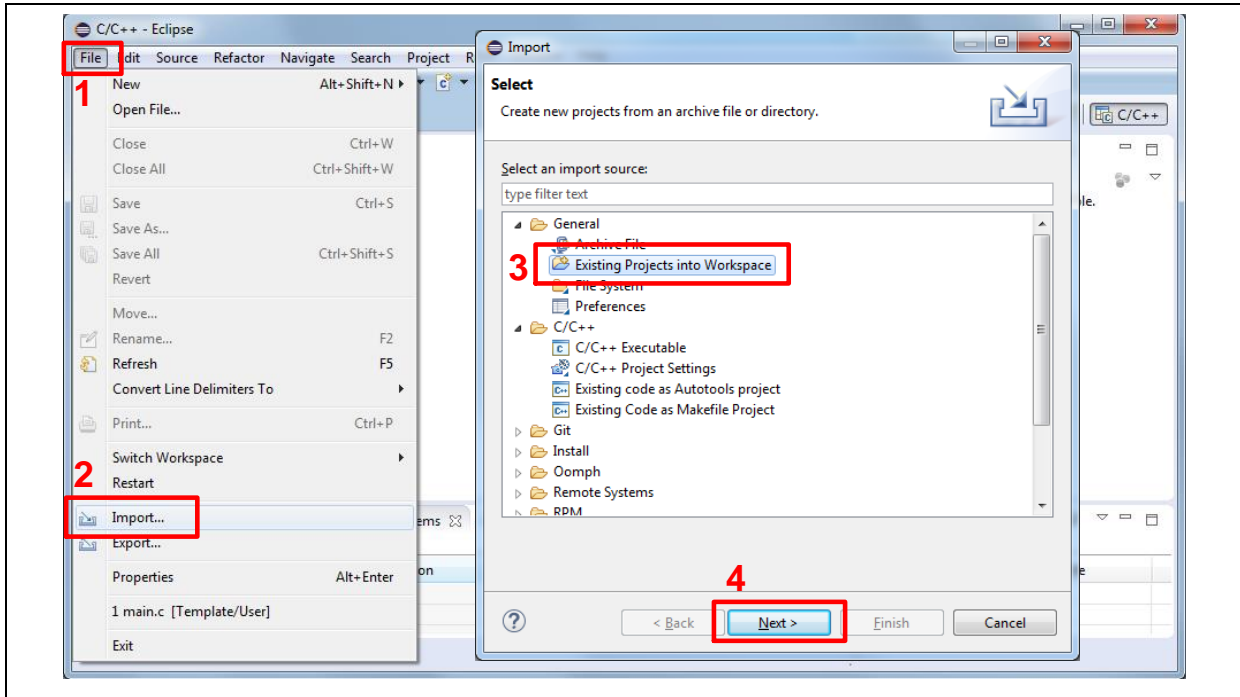


Figure 4-19 Import the Project in NuEclipse

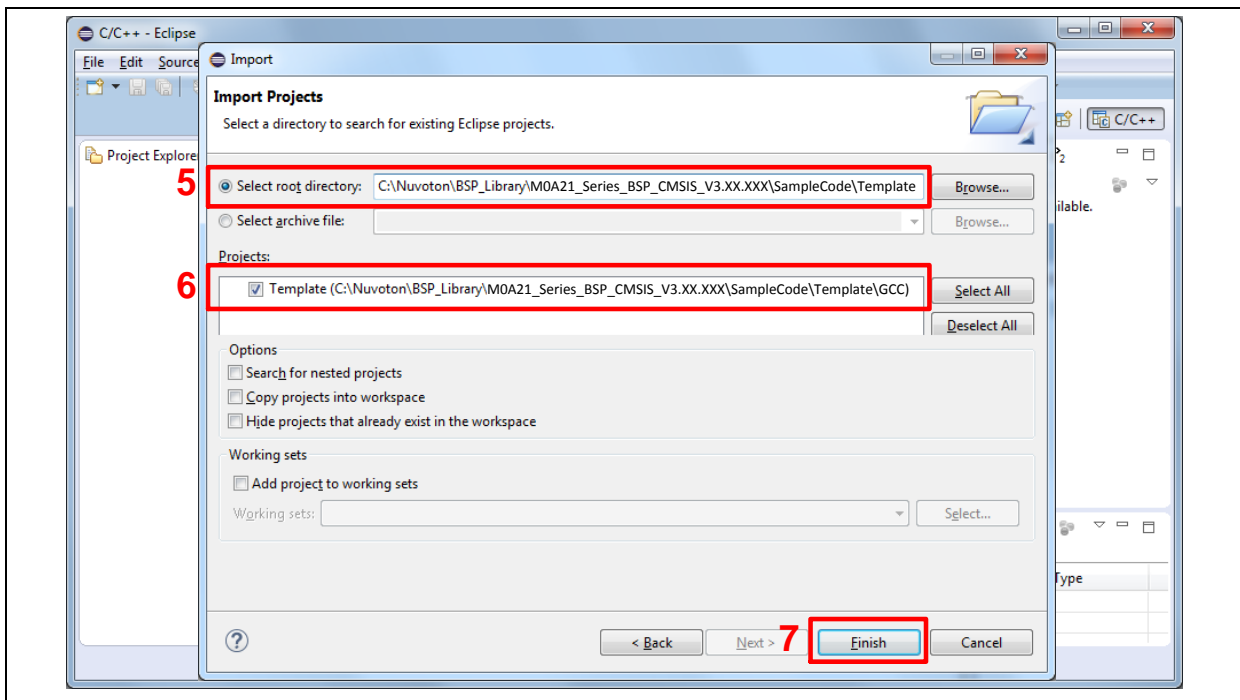


Figure 4-20 Import Projects Windows

- 3. Click the “Template” project and find the project properties as shown in Figure 4-21. Make sure the settings are the same as settings in Figure 4-22.

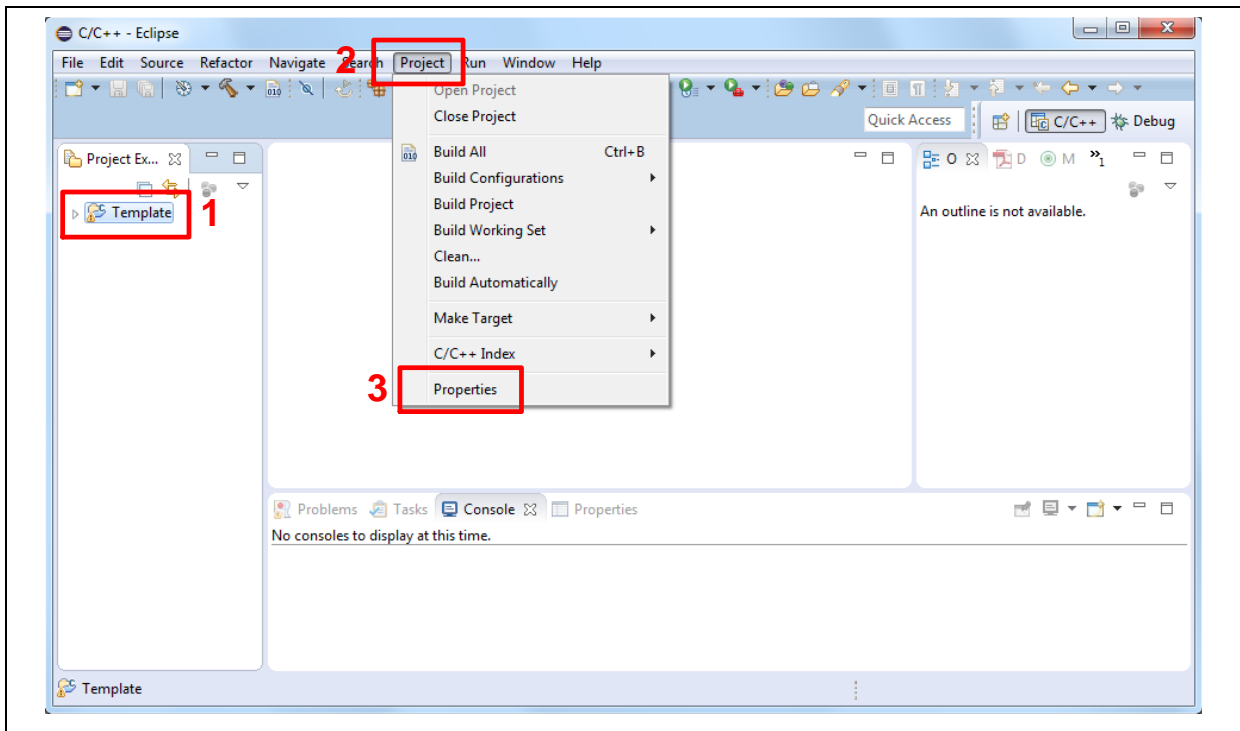


Figure 4-21 Open Project Properties Window

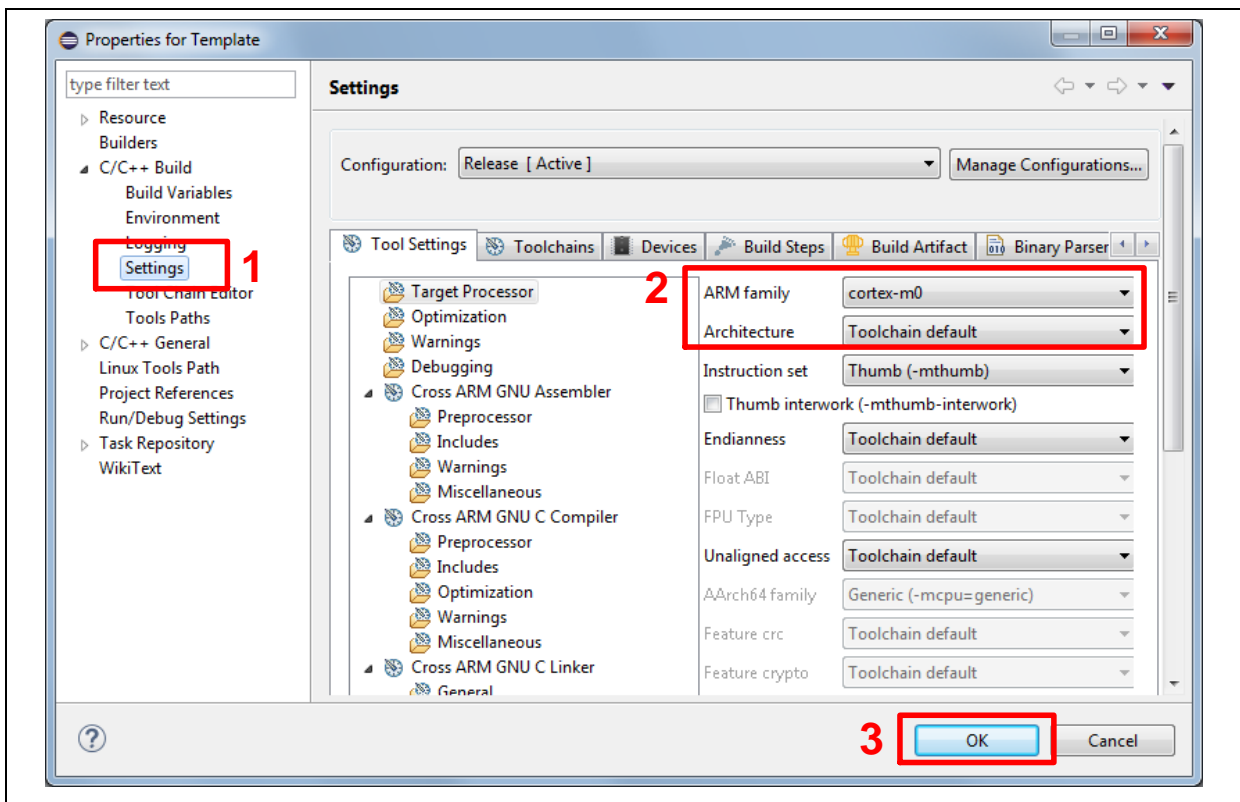


Figure 4-22 Project Properties Settings

- 4. Click the “Template” project and build the project.

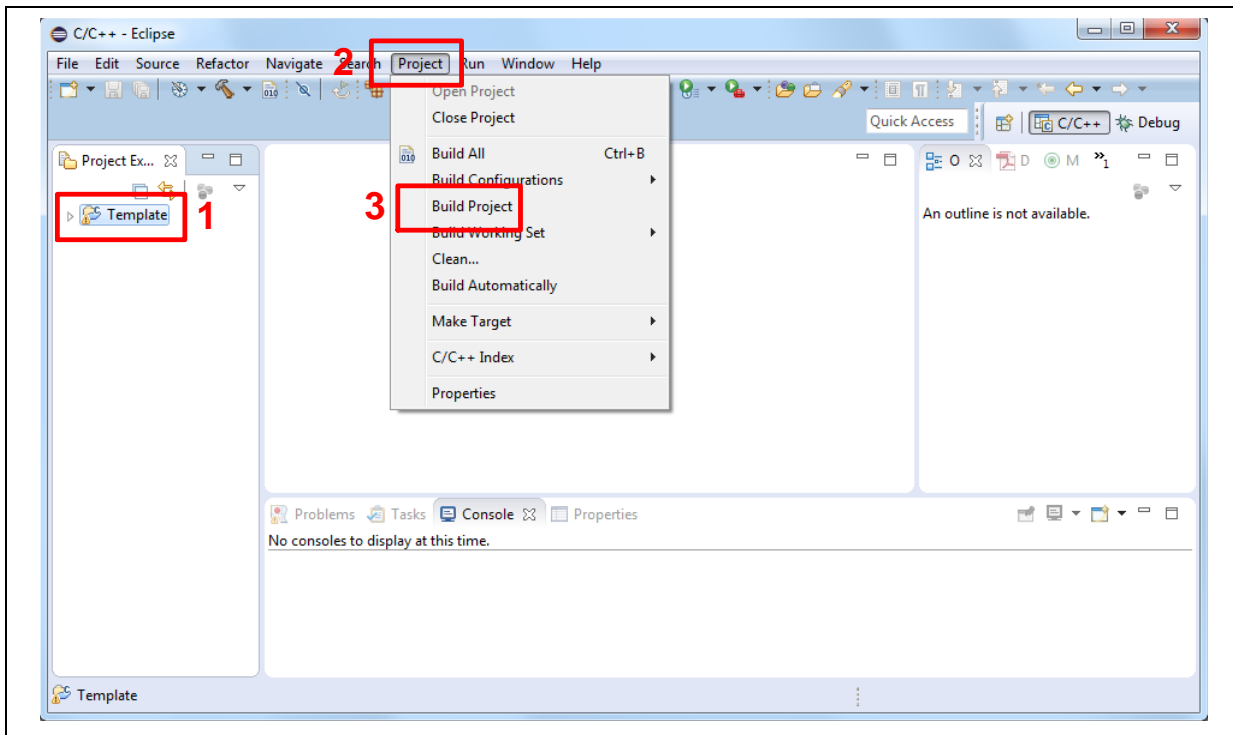


Figure 4-23 Build Project

- 5. After the project is built, click the “Template” project and set the “Debug Configuration” as shown in Figure 4-24. Follow the settings presented in Figure 4-25, Figure 4-26 and Figure 4-27 to enter debug mode.

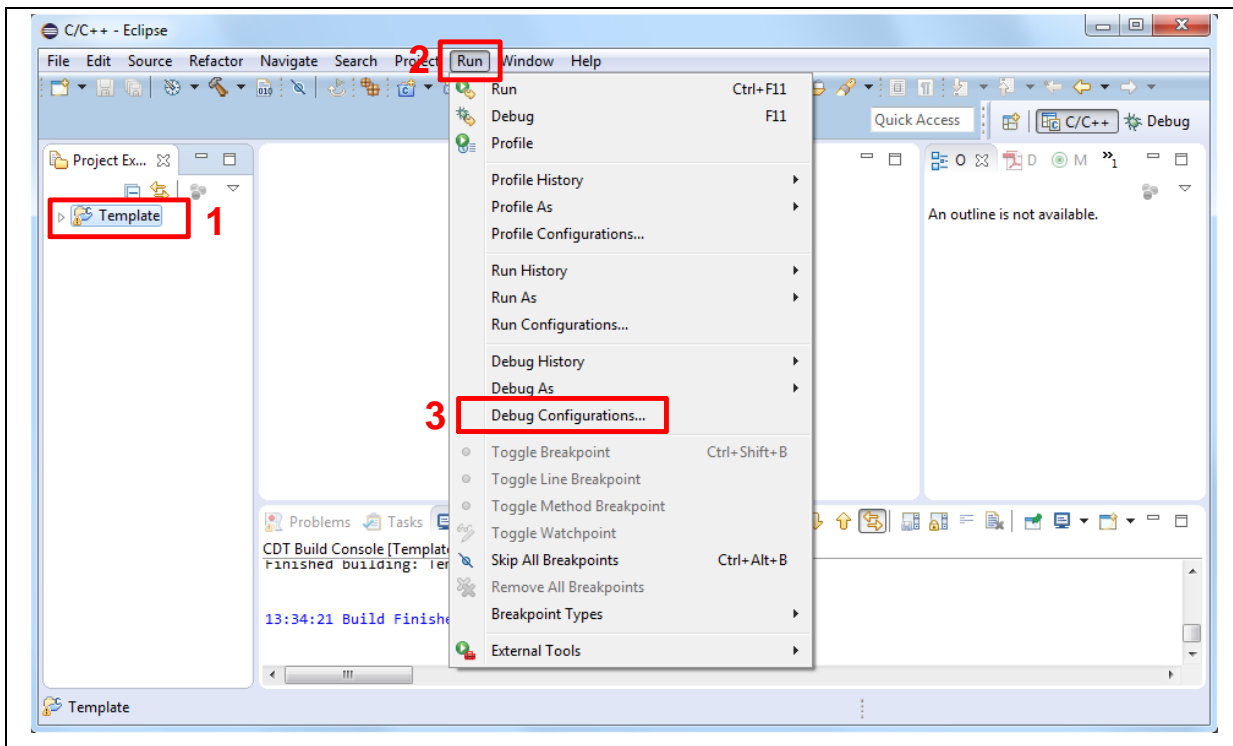
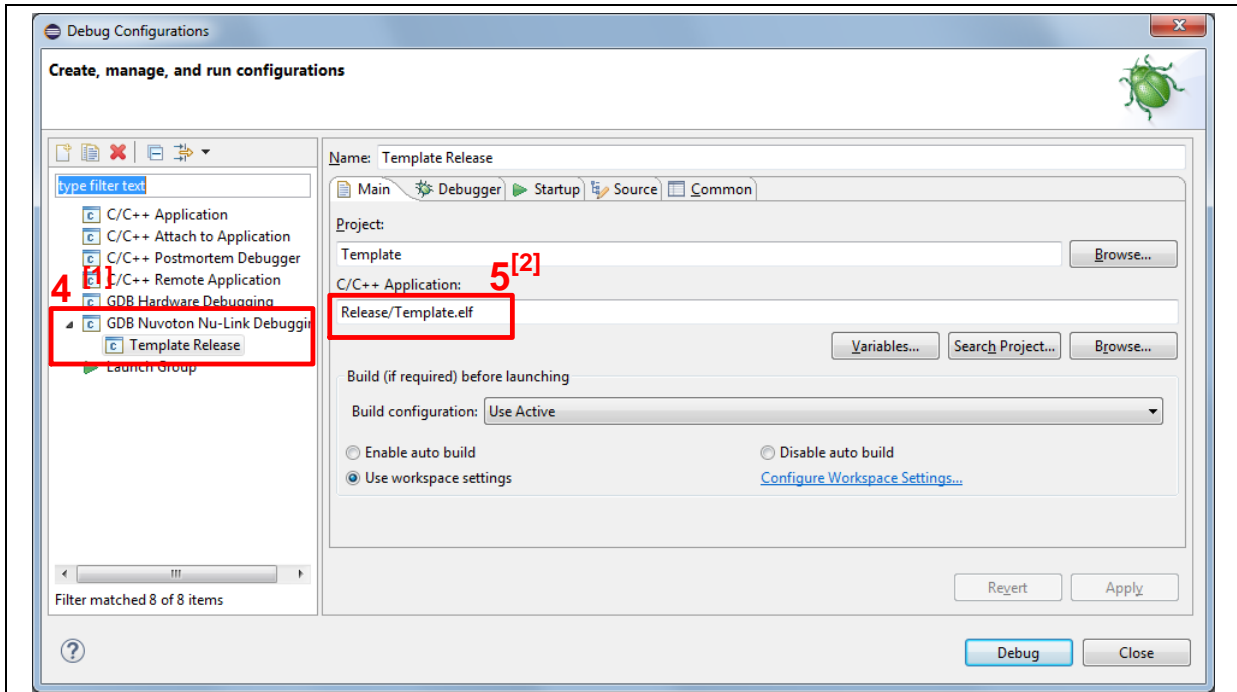


Figure 4-24 Open Debug Configuration



Note 1: Double click the “GDB Nuvoton Nu-Link Debugging” to create the subitem.

Note 2: After the project is built, the “*.elf” file will be shown in “C/C++ Application” frame.

Figure 4-25 Main Tab Configuration

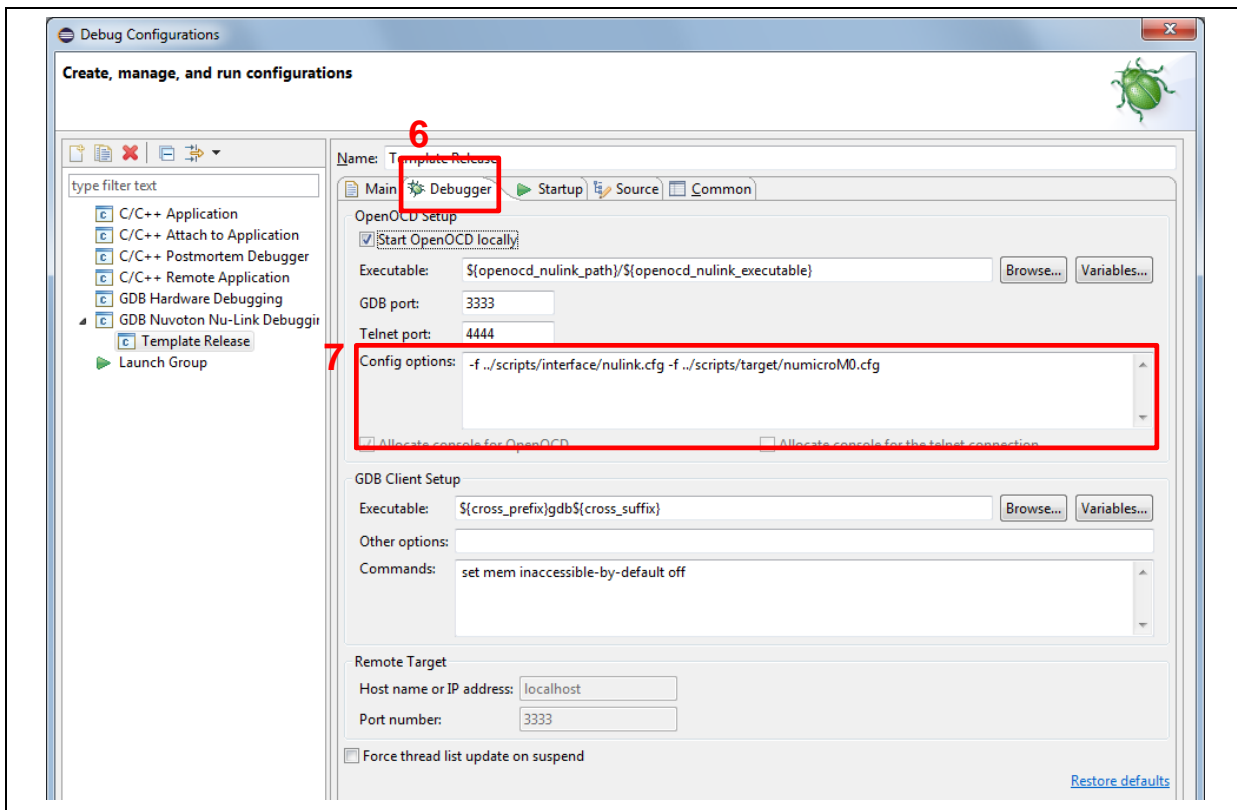
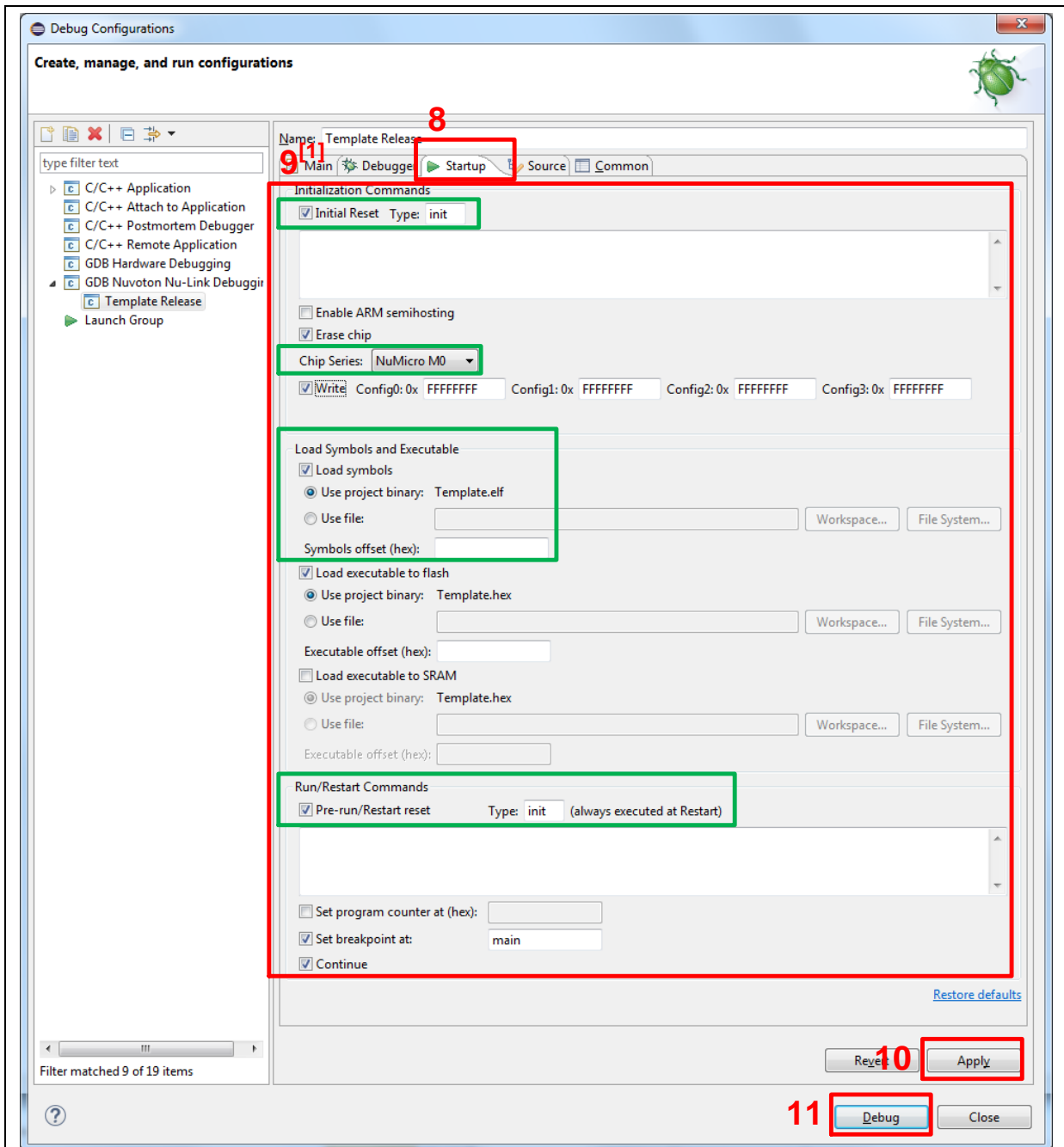


Figure 4-26 Debugger Tab Configuration



Note: User must follow those settings highlighted in green, and can configure other settings depend on the needs.

Figure 4-27 Startup Tab Configuration

- Figure 4-28 shows the debug mode under NuEclipse. Click “Resume” and the debug message will be printed out as shown in Figure 4-29. User can debug the project under debug mode by checking source code, assembly language, peripherals’ registers, and setting breakpoint, step run, value monitor, etc. For more information about how to use NuEclipse, please refer to the NuEclipse User Manual.

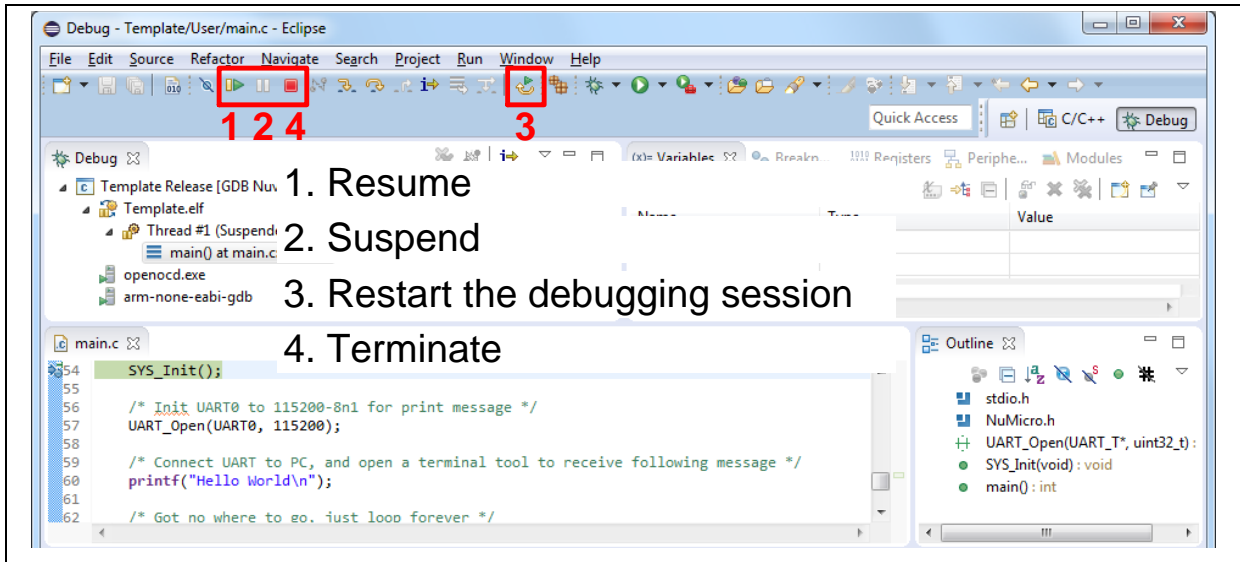


Figure 4-28 NuEclipse Debug Mode

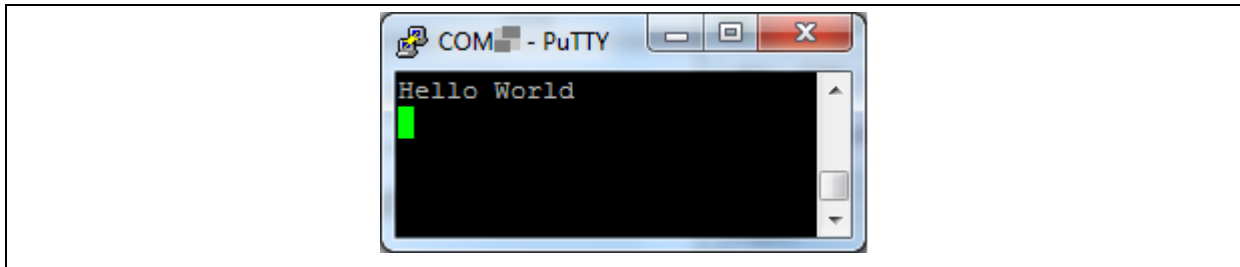


Figure 4-29 Debug Message on Serial Port Terminal Windows

5 NUMAKER-M0A230C SCHEMATICS

5.1 Nu-Link2-Me

Figure 5-1 shows the Nu-Link2-Me circuit.

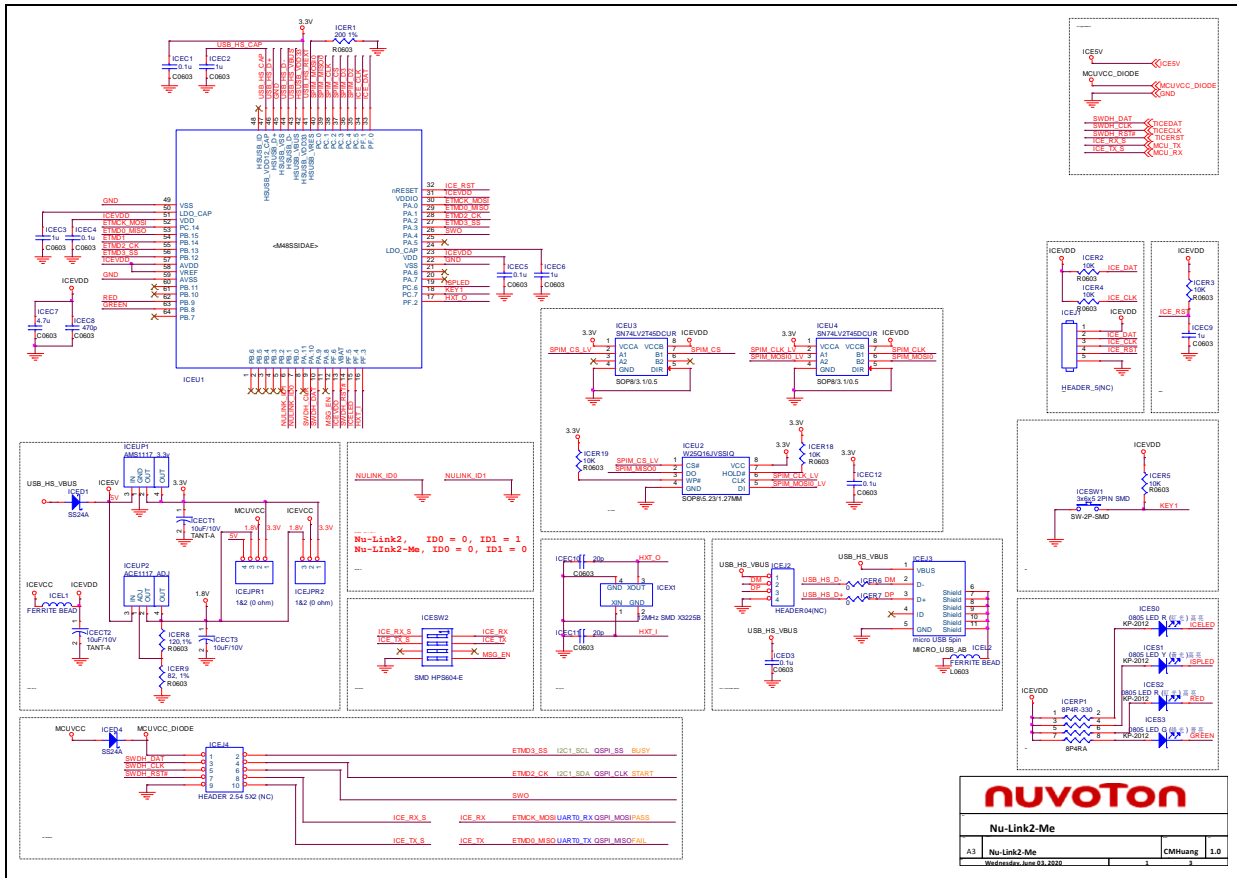


Figure 5-1 Nu-Link2-Me Circuit

5.2 M0A21 Platform

Figure 5-2 shows the M0A21 Platform circuit.

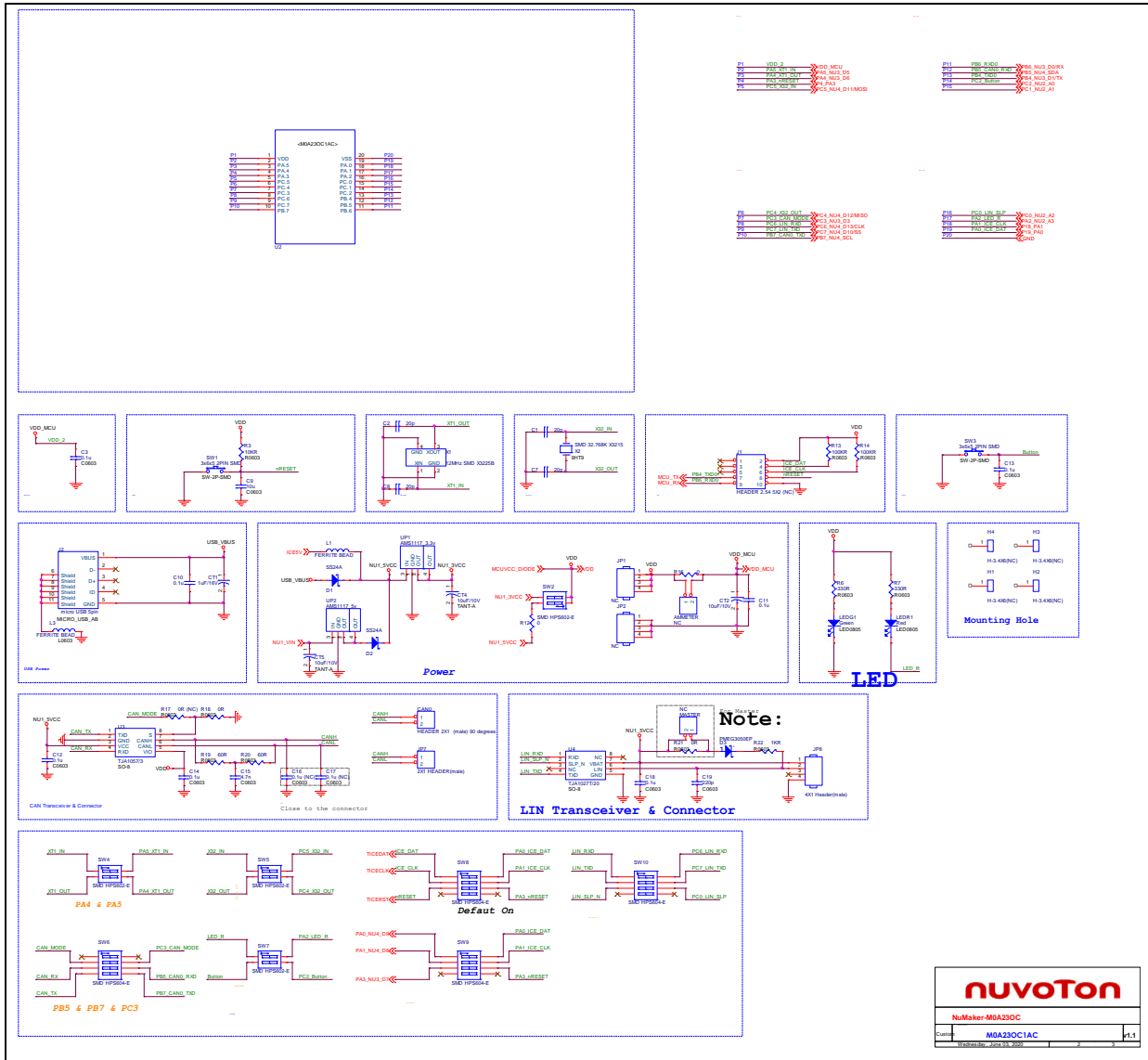


Figure 5-2 M0A21 platform Circuit

5.3 Extension Connector

Figure 5-3 shows extension connectors of NuMaker-M0A230C.

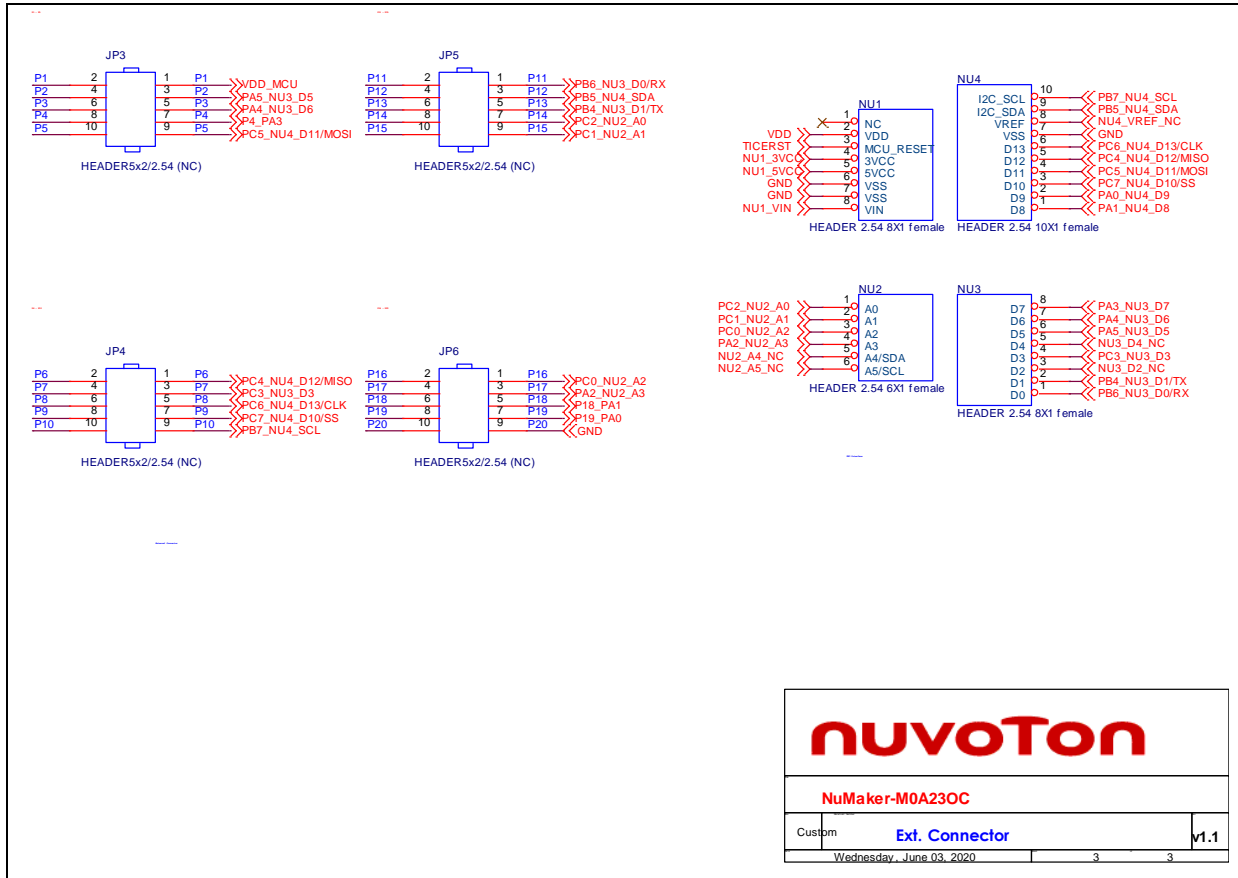


Figure 5-3 Extension Connectors Circuit

5.4 PCB Placement

Figure 5-4 and Figure 5-5 show the front and rear placement of NuMaker-M0A230C.

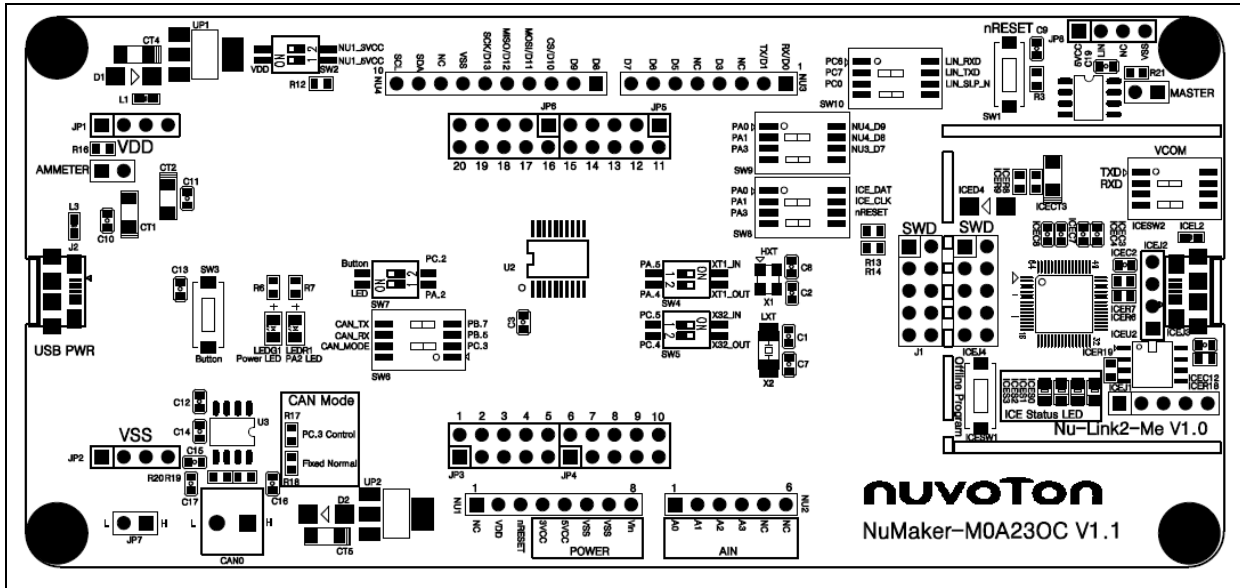


Figure 5-4 Front Placement

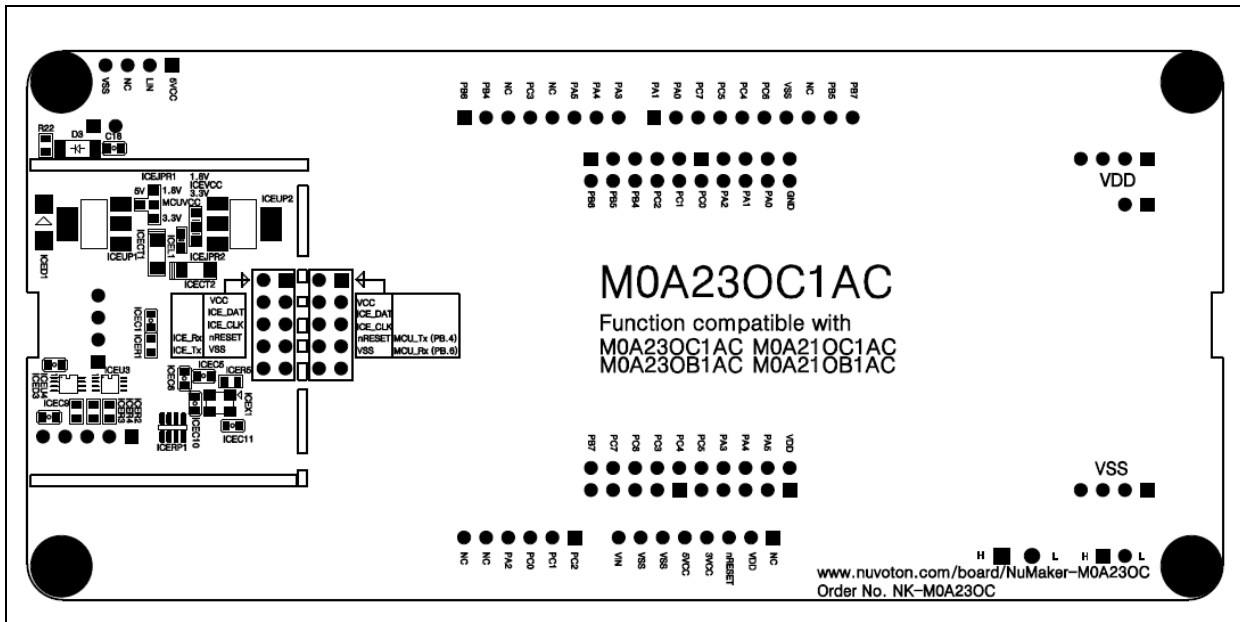


Figure 5-5 Rear Placement

6 REVISION HISTORY

Date	Revision	Description
2020.07.23	1.01	1. Initial version

Important Notice

Nuvoton Products are neither intended nor warranted for usage in systems or equipment, any malfunction or failure of which may cause loss of human life, bodily injury or severe property damage. Such applications are deemed, "Insecure Usage".

Insecure usage includes, but is not limited to: equipment for surgical implementation, atomic energy control instruments, airplane or spaceship instruments, the control or operation of dynamic, brake or safety systems designed for vehicular use, traffic signal instruments, all types of safety devices, and other applications intended to support or sustain life.

All Insecure Usage shall be made at customer's risk, and in the event that third parties lay claims to Nuvoton as a result of customer's Insecure Usage, customer shall indemnify the damages and liabilities thus incurred by Nuvoton.

*Please note that all data and specifications are subject to change without notice.
All the trademarks of products and companies mentioned in this datasheet belong to their respective owners.*

Mouser Electronics

Authorized Distributor

Click to View Pricing, Inventory, Delivery & Lifecycle Information:

[Nuvoton:](#)

[NK-M0A23EC](#)