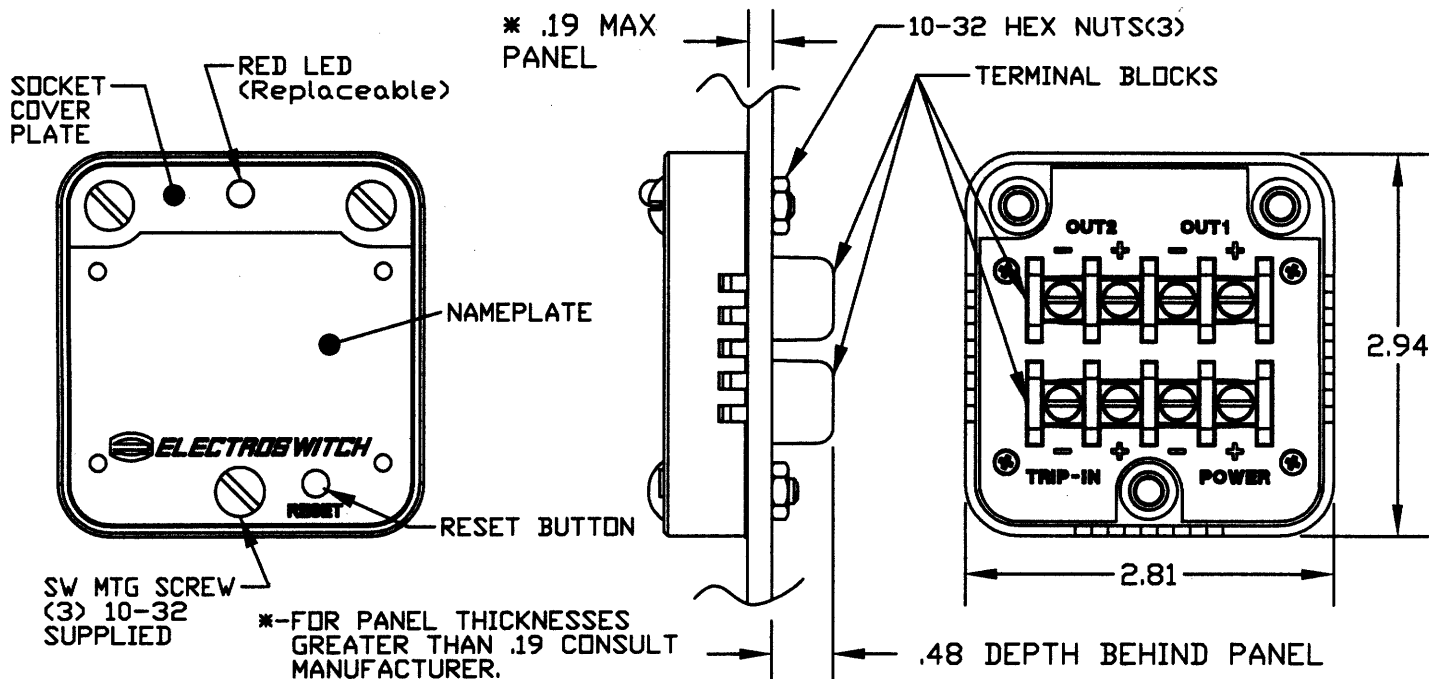


**ELECTROSWITCH**UNIT OF ELECTRO SWITCH CORP.  
WEYMOUTH MASSACHUSETTS 02188  
TEL(781)335-5200 FAX(781)335-4253ANNUNCIATOR  
TARGET RELAY

686-100A



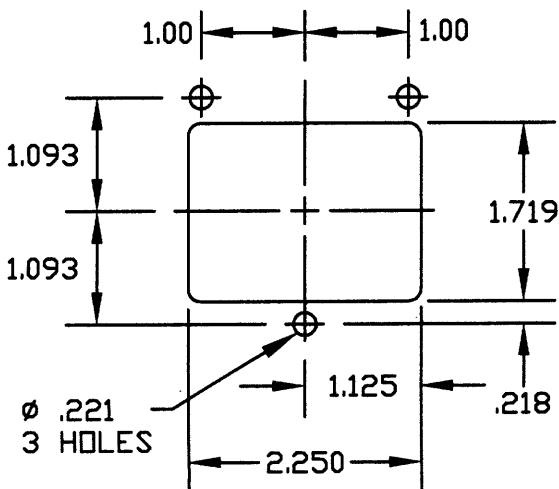
UNIT IS PROVIDED WITH AN OPTIONAL  
BACK PLATE FOR MOUNTING ON REAR  
OF PANEL.

**NOTES:**

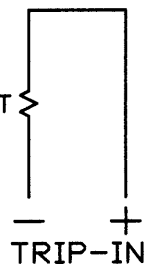
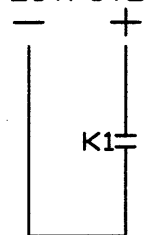
1. A TRIP INPUT CLOSSES OUTPUTS 1 AND 2, AND ILLUMINATES THE LED. OUTPUTS 1 AND 2 STAY CLOSED, AND THE LED REMAINS ILLUMINATED, UNTIL THE MANUAL RESET BUTTON IS PRESSED.
2. 5 mSEC IS STANDARD, CONSULT FACTORY FOR OTHER AVAILABLE SETTINGS BETWEEN 1mSEC AND 1.875 SECONDS.

**OPERATING SPECIFICATIONS**

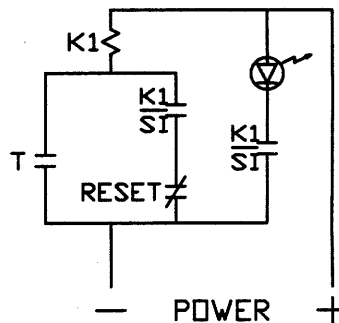
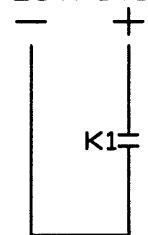
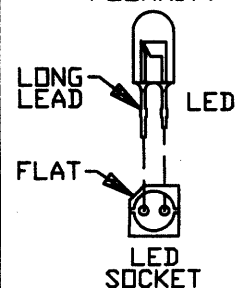
VOLTAGE RANGE:	37-140 VDC
CURRENT DRAIN:	20mA MAX
OUTPUT CURRENT (EACH OUTPUT)	2A CONTINUOUS 12A FOR 1 SECOND
RESPONSE TIME: (MIN. DURATION OF INPUT) (SEE NOTE 2)	5 mSEC
OPERATING TEMP:	-20°C TO 55°C

PANEL CUTOUT  
(FRONT VIEW)

OUTPUT2



OUTPUT1

OBSERVE  
POLARITY

MADE BY: RAB  
DATE: 12-27-02  
APPR BY: EJM  
DATE: 12-27-02

DWG. NO.  
SHEET 1 OF 2

REV  
D

REVISIONS: A | ECN# 27294 | B | ECN# 27986 | C | ECN# 28488 | D | ECN# 30961  
RAB 08-28-03 CMM/BC 05-12-05 VCK/MK 09-12-06 BC/Q6-29-115

# Mouser Electronics

Authorized Distributor

Click to View Pricing, Inventory, Delivery & Lifecycle Information:

[Electroswitch:](#)

[686-100A](#)