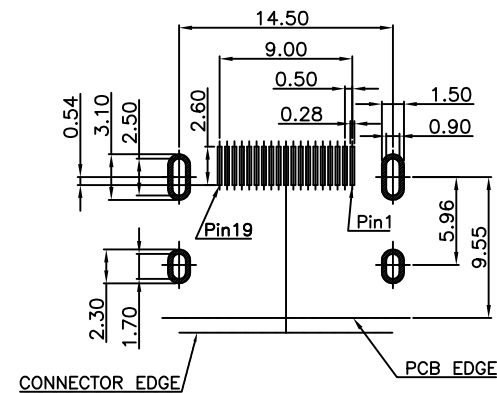


SPECIFICATIONS:

1. ELECTRICAL CHARACTERISTICS

- 1-1. CURRENT RATING: 0.5 AMP
- 1-2. VOLTAGE RATING: 40 V
- 1-3. CONTACT RESISTANCE: 30MILLIOHMS MAX
- 1-4. INSULATION RESISTANCE: 100M MIN. @ 500V DC
- 1-5. DIELECTRIC WITHSTANDING VOLTAGE: 500V AC FOR 1 MINUTE
- 2. MECHANICAL CHARACTERISTICS:
- 2-1. INSERTION FORCE : 4.5KGF MAX.
- 2-2. WITHDRAWING FORCE : 1KGF ~ 4KGF.
- 3. LIFE TEST: 10000 CYCLES
- 4. OPERATING TEMPERATURE: -25°C TO +85°C

C	SHELL	1	C2680R-H Ni 50u" T=0.5mm PLATING ALL OVER
B	TERMINAL	19	C2680R-H SEE PART NO.
A	HOUSING	1	LCP E130i UL94V-0 BLACK
NO	PART NAME	QTY	MATERIAL PLATING & COLOR


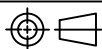


RECOMMENDED PCB LAYOUT (TOP VIEW)

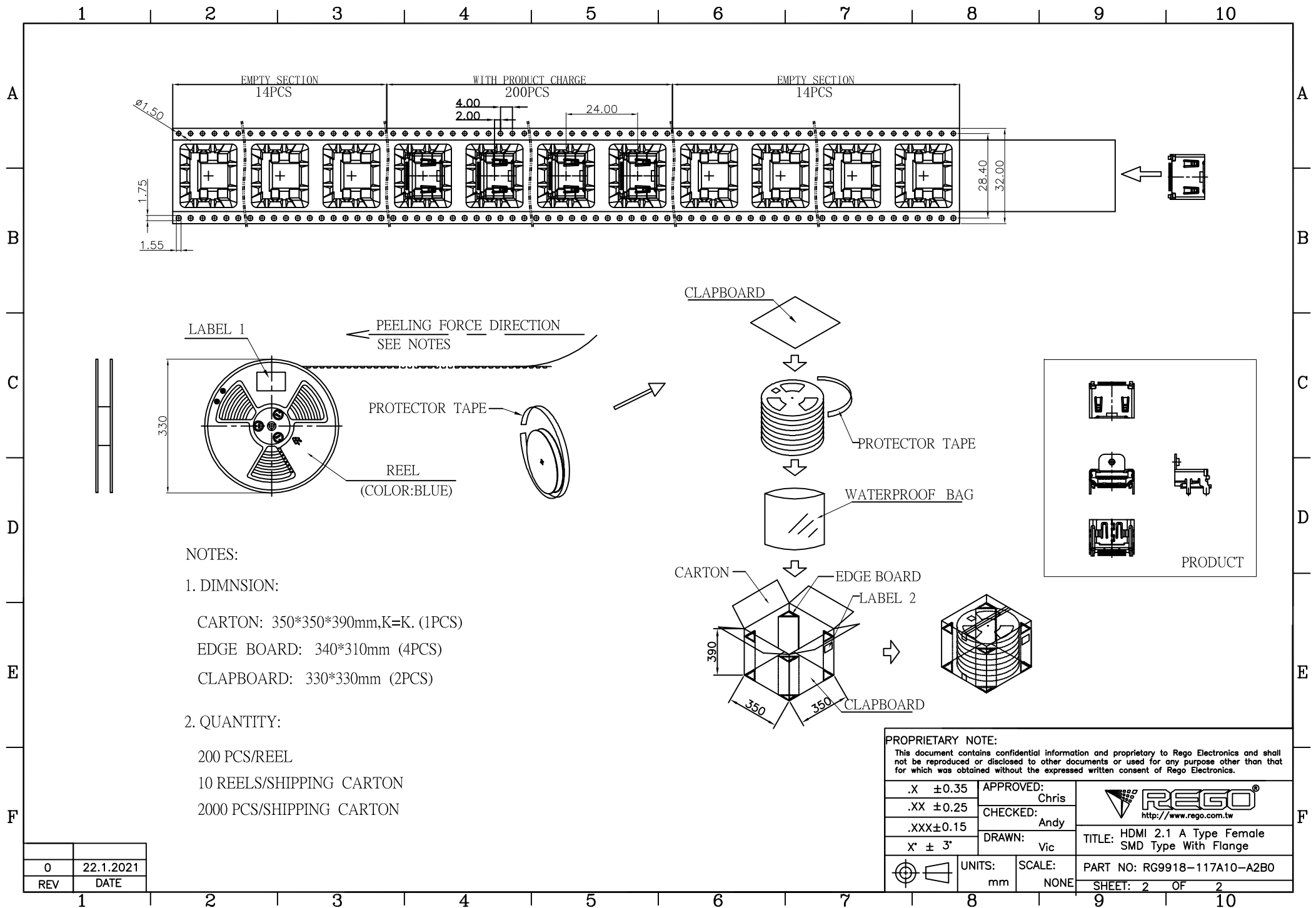
TOLERANCE: ±0.05mm

PROPRIETARY NOTE:

This document contains confidential information and proprietary to Rego Electronics and shall not be reproduced or disclosed to other documents or used for any purpose other than that for which was obtained without the expressed written consent of Rego Electronics.

.X ±0.35	APPROVED:	 http://www.rego.com.tw
.XX ±0.25	CHECKED:	
.XXX±0.15	DRAWN:	
X* ± 3*		TITLE: HDMI 2.1 A Type Female SMD Type With Flange
	UNITS:	SCALE:
	mm	NONE
		PART NO: RG9918-117A10-A2B0
		SHEET: 1 OF 2

0	22.1.2021
REV	DATE



Mouser Electronics

Authorized Distributor

Click to View Pricing, Inventory, Delivery & Lifecycle Information:

[Rego Electronics:](#)

[RG9918-117A10-A2B0](#)