

## REFLECTIVE OPTIC



### FEATURES / BENEFITS

- ▲ Only 11.5mm (0.453") maximum diameter
- ▲ Ideal for tightly spaced LED arrays
- ▲ Adhesive backing for easy installation. Adhesive rated from -40°C to +120°C (-40°F to +248°F)
- ▲ Automatic alignment feature
- ▲ Spot & wide versions available for Luxeon Rebel LEDs
- ▲ Universal version suites Cree XPC, XPE, XPG and standard Rebel LEDs
- ▲ Adhesive is approved to ESK-M3G162, WSK-3G184-A4 (Ford motor) & RES22LA06 type 2 (Rover)

### MECHANICAL DIMENSIONS

7° "Spot" model  
 11.5mm (0.453") top diameter  
 11.2mm (0.433") base diameter  
 10.0mm (0.249") height

13° "Wide" model  
 9.7mm (0.433") top diameter  
 11.2mm (0.433") base diameter  
 3.8mm (0.142") height

### APPLICATIONS

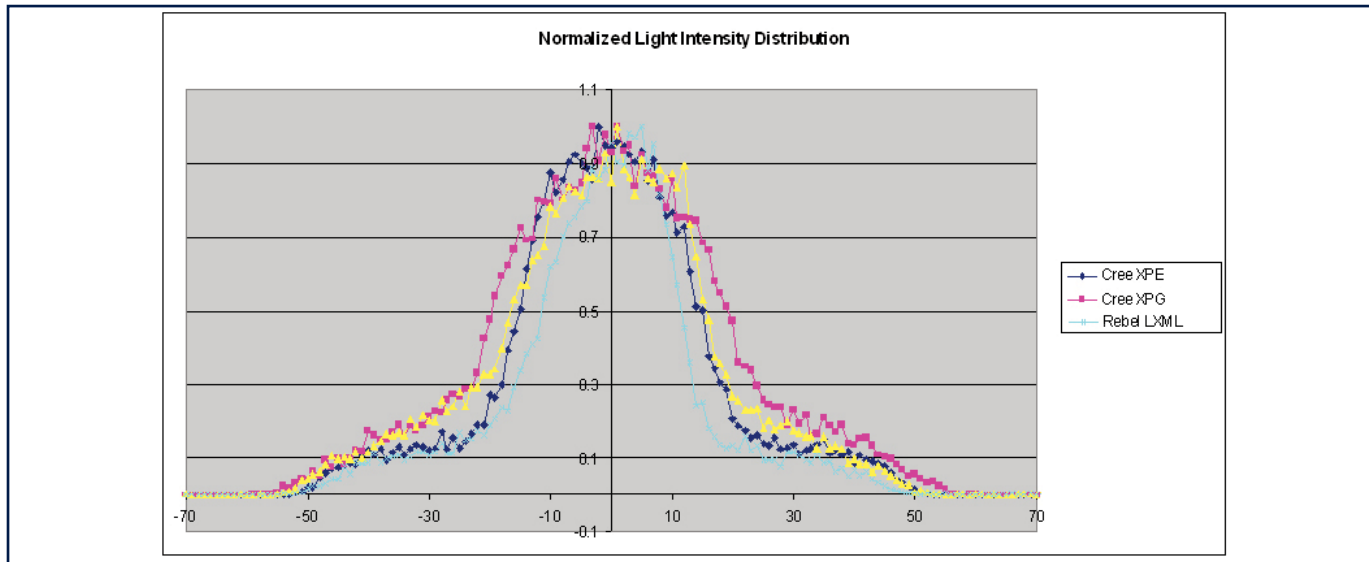
- ▲ Spot lighting
- ▲ Flood lighting
- ▲ Accent lighting
- ▲ RGB color mixing

### ORDERING INFORMATION

Dialight P/N	Description	Degree*
OPC1-1-COL	7 degree "spot" model (Luxeon only)	7°
OPC1-2-COL	13 degree "wide" model (Luxeon only)	13°
OPC-REF-1-WD	Universal optic for: Cree - XPC, XPE, XPG Rebel	Refer to light intensity distribution chart

\*Other colour options available (consult factory MOQ applies)  
 Dashes are for reference only

## LIGHT INTENSITY DISTRIBUTION FOR OPC-REF-1-WD



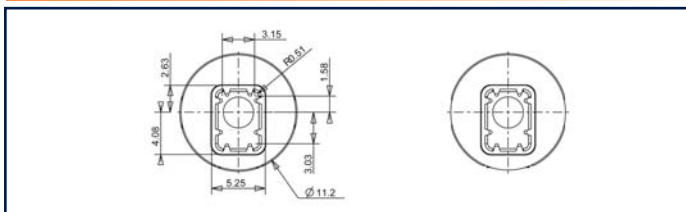
The full-width at half-maximum emission angle is:

- 38 degree (+/-19 degree) for Cree XPG
- 30 degree (+/-15 degree) for Cree XPE
- 23 degree (+/-11.5 degree) for Luxeon rebel LXLM

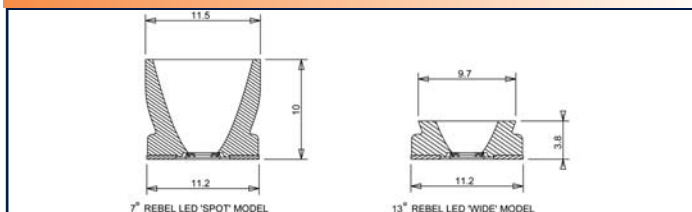
## VIBRATION TESTING

Test	Standard/Test Method
Vibration	Class A alternating 60°C to 25°C Twenty 12 minute cycles 5 200 Hz @ 4.2 g 3 axes
Shock	10g 11 mS Terminal Peak Sawtooth 3 axes

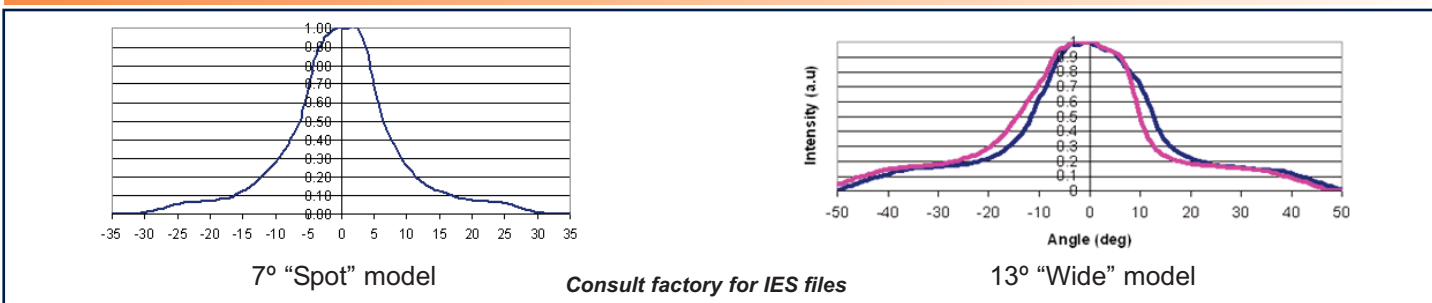
### PCB ALIGNMENT DIMENSION DETAILS



### MECHANICAL DIMENSIONS



## PHOTOMETRIC DATA



Dialight reserves the right to make changes at any time in order to supply the best product possible. The most current version of this document will always be available at: [www.dialight.com/Assets/Brochures\\_And\\_Catalogs/Illumination/MDEXLUMREB10MM.pdf](http://www.dialight.com/Assets/Brochures_And_Catalogs/Illumination/MDEXLUMREB10MM.pdf)

# Mouser Electronics

Authorized Distributor

Click to View Pricing, Inventory, Delivery & Lifecycle Information:

Dialight:

[OPC1-1-COL-SP](#) [OPC1-1-COL-WD](#)