

DIALIGHT PART NUMBER	LED COLOR	
	POS 1	POS 2
552-0911-803F	RED TINTED DIFFUSED	RED TINTED DIFFUSED
552-0921-802F	GREEN TINTED DIFFUSED	RED TINTED DIFFUSED

RoHS COMPLIANT 552-09X1-80XF

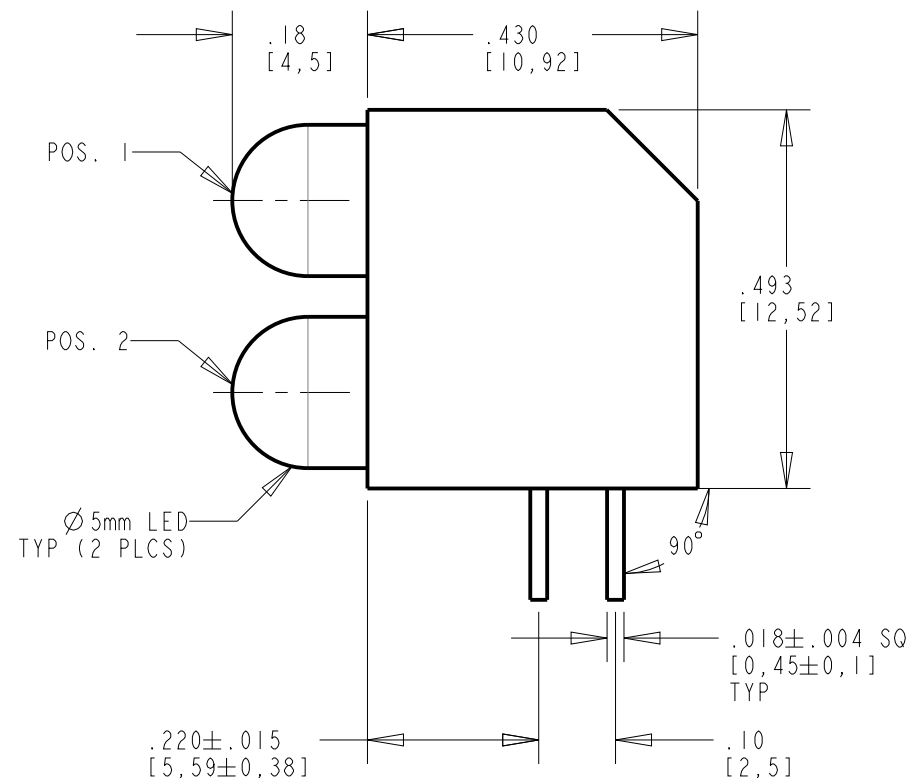
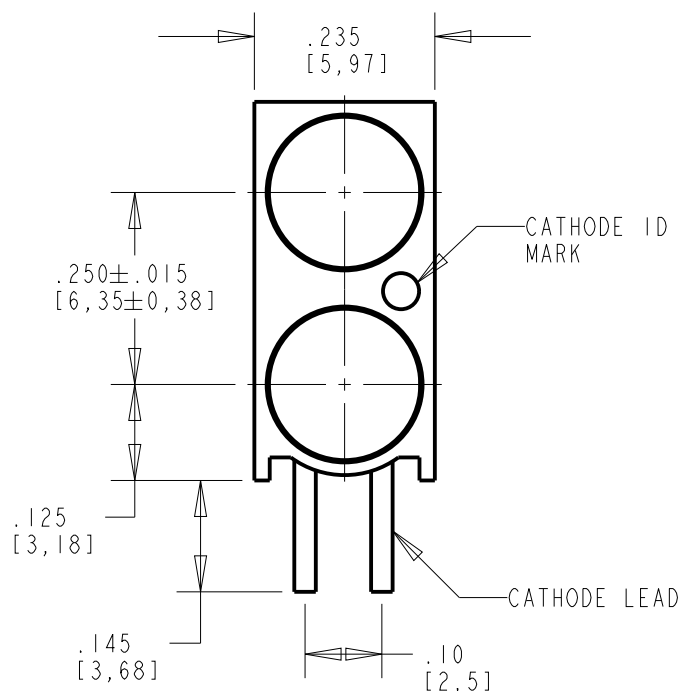
Part Numbers with the "F" suffix ending are RoHS Compliant.
 For example: 552-0921-802F
 Packaging is marked with "RoHS Compliant" label or equivalent markings. Parts can be wave soldered, dip soldered or hand soldered using typical lead-free soldering process with max 260°C temp. for 5 sec.

REV	ECN NO	REVISIONS	DRN	CKD	APP	DATE
A	---	NEW RELEASE	KLJ	N.O.	MES	4-29-09
B	---	ADDED PLUG TAPE TO NOTE 4	RSK	WFB	NO	1-2-15
C	---	ADDED NOTE 5	RSK	WFB	NO	1-16-15



ATTENTION:
 OBSERVE PRECAUTIONS FOR
 HANDLING ELECTROSTATIC
 SENSITIVE DEVICES

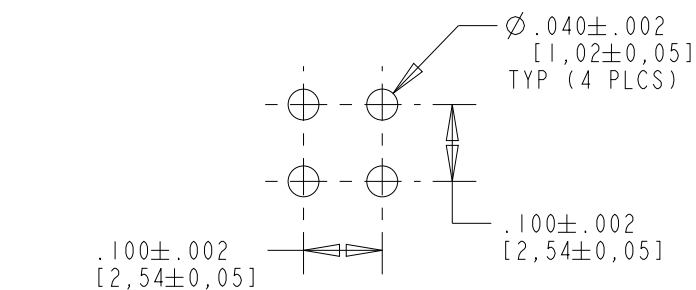
OPERATING CHARACTERISTICS AT 25°C AMBIENT											
COLOR	LUMINOUS INTENSITY @ I _F = 2 mA (mcd)			FORWARD VOLTAGE @ I _F = 2 mA (V)		REVERSE CURRENT (μA)	DOMINANT WAVELENGTH (nm)			PEAK WAVELENGTH (nm)	VIEWING ANGLE (DEG)
	MIN	TYP	MAX	TYP	MAX	MAX	MIN	TYP	MAX	TYP	TYP
RED	1.5	2.3	4.2	1.7	2.0	50	620	626	633	635	50
GREEN	1.2	1.8	---	1.8	2.2	50	---	---	---	565	50



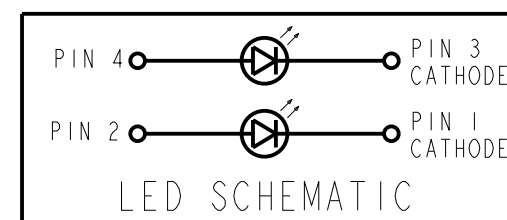
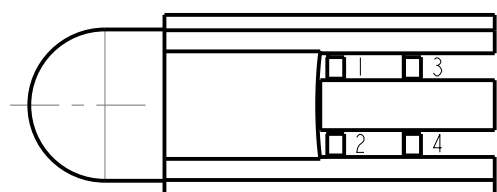
ABSOLUTE MAXIMUM RATINGS AT 25°C AMBIENT	COLOR		UNITS
	RED	GREEN	
POWER DISSIPATION	24	24	mW
DC FORWARD CURRENT	7	7	mA
PEAK TRANSIENT FORWARD CURRENT (10 μs PULSE WIDTH)	500	500	mA
DERATE LINEARLY FROM 92°C	1.0	1.0	mA/°C
REVERSE VOLTAGE	5	5	V
STORAGE TEMPERATURE	260		°C
OPERATING TEMPERATURE	-55 TO +100		°C
SOLDERING TEMPERATURE, 1/16" FROM BODY FOR 5 SEC	-55 TO +100		°C

NOTES:

- LED LEAD DIMENSIONS SHOWN ARE MEASURED AT HOUSING EXIT.
- LEADS TO FIT INTO HOLES SPACED AS PER PATTERN.
- PIN NUMBERS FOR REFERENCE ONLY, DESIGNATION NON-EXISTENT ON PART.
- PACKAGING: 38 PCS/TUBE, END PLUGS ARE TAPED TO SECURE THE PLUGS TO THE TUBE.
- TUBES ARE PACKAGED IN ESD BAG, 10 TUBES/BAG.
- DIALIGHT PART NUMBERS: 552-0911-803F, 552-0921-802F
- THIS ASSEMBLY CONTAINS ELECTROSTATIC DISCHARGE SENSITIVE DEVICES (ESDS). MAINTAIN ALL PRECAUTIONARY MEASURES DURING ASSEMBLY, HANDLING, AND STORAGE IN ACCORDANCE WITH IPC-A-610.



P.C. BOARD HOLE PATTERN



THIS DRAWING AND THE CONTENTS HEREIN ARE CONFIDENTIAL AND THE SOLE PROPERTY OF DIALIGHT. REPRODUCTION OF THIS DRAWING OR CONSTRUCTION OF ANY PARTS WITHIN THIS DRAWING ARE FORBIDDEN WITHOUT THE WRITTEN CONSENT OF DIALIGHT.		
SCALE: 4.000	DRAWING NUMBER	REV
ALL DIM'S IN: INCHES (MM)	C-17702	C
TOLERANCES: UNLESS OTHERWISE SPECIFIED	TITLE Ø5mm BI-LEVEL CBI, TUBE PKG, W/ESD BAG RoHS COMPLIANT	
FRACTIONS: ±1/64 DECIMALS (.XX): ±.02 DECIMALS (.XXX): ±.010	MATERIAL	
ANGLES: ±3°	FINISH:	
FSCM 83330	Dialight 1501 ROUTE 34 SOUTH FARMINGDALE, NJ 07727	
SHEET 1 OF 1		FAMILY TABLE:

Mouser Electronics

Authorized Distributor

Click to View Pricing, Inventory, Delivery & Lifecycle Information:

[Dialight:](#)

[552-0911-803F](#) [552-0921-802F](#)