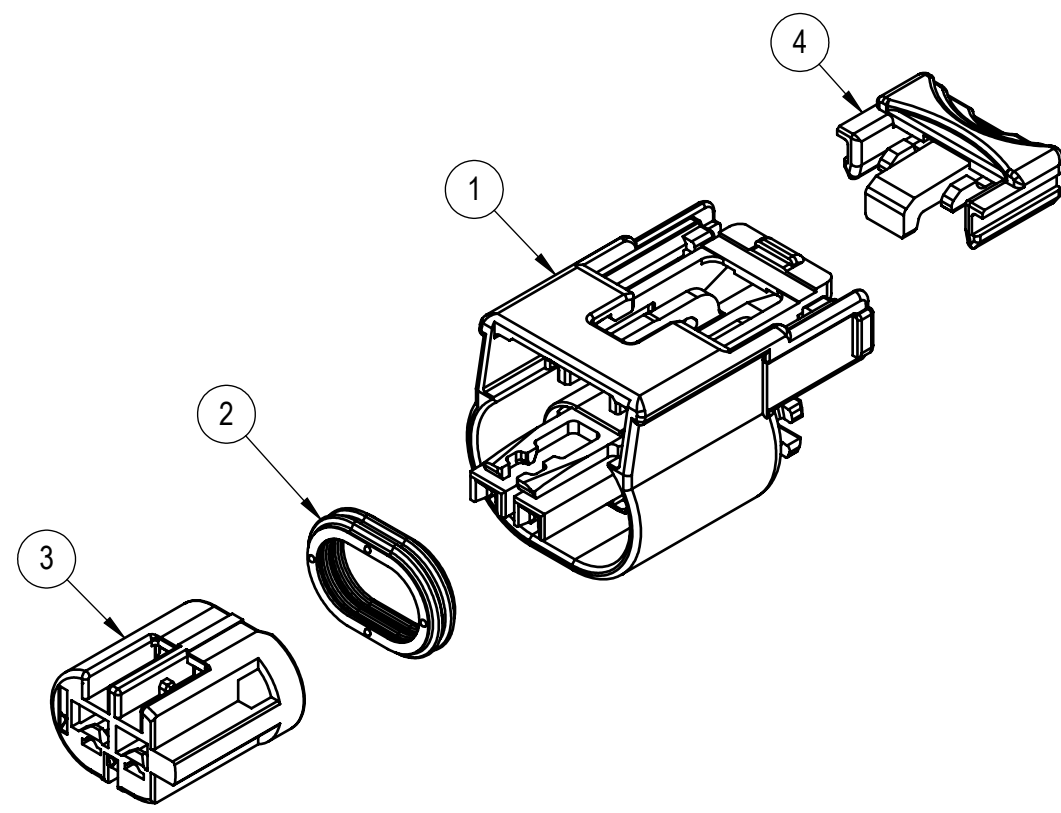


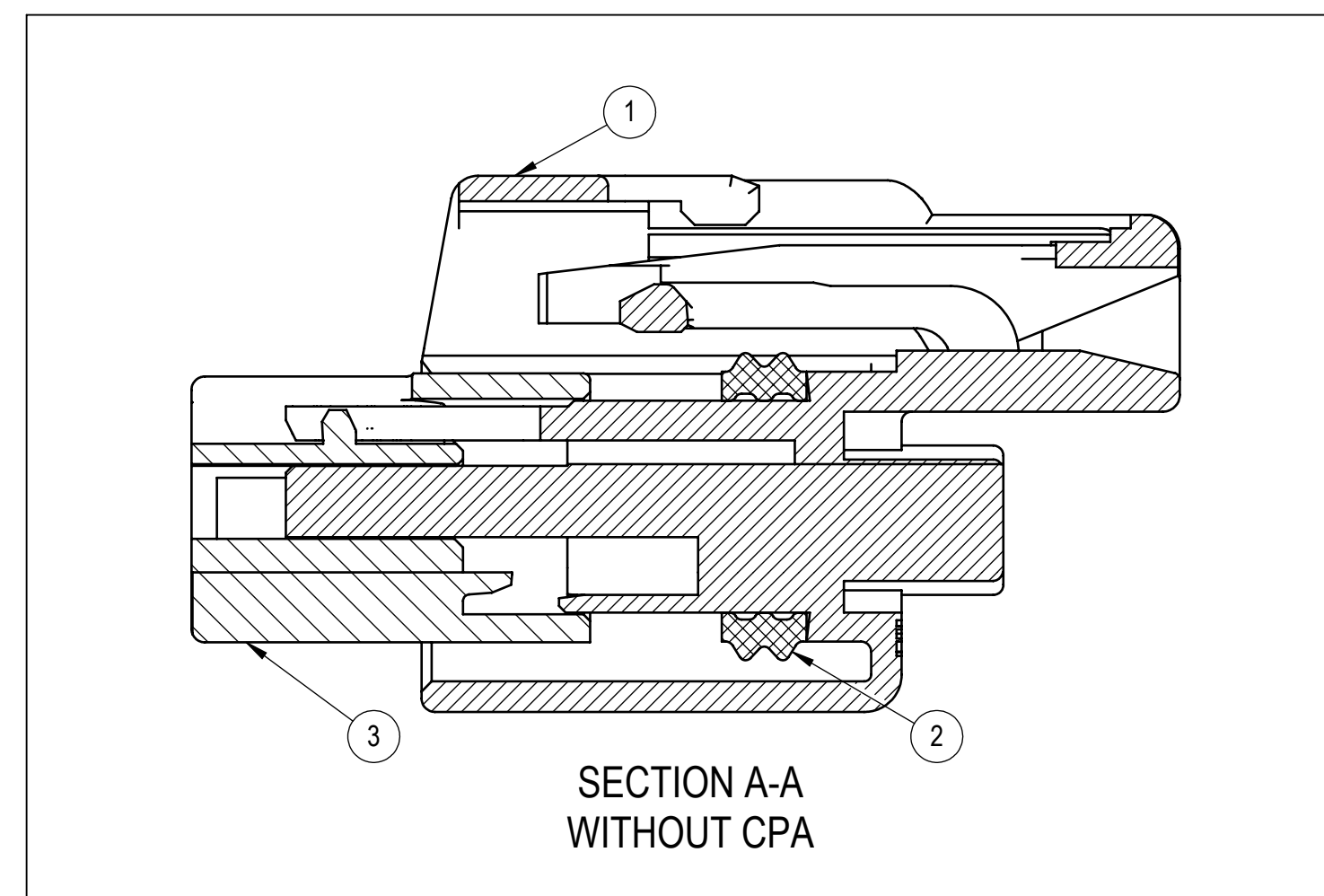
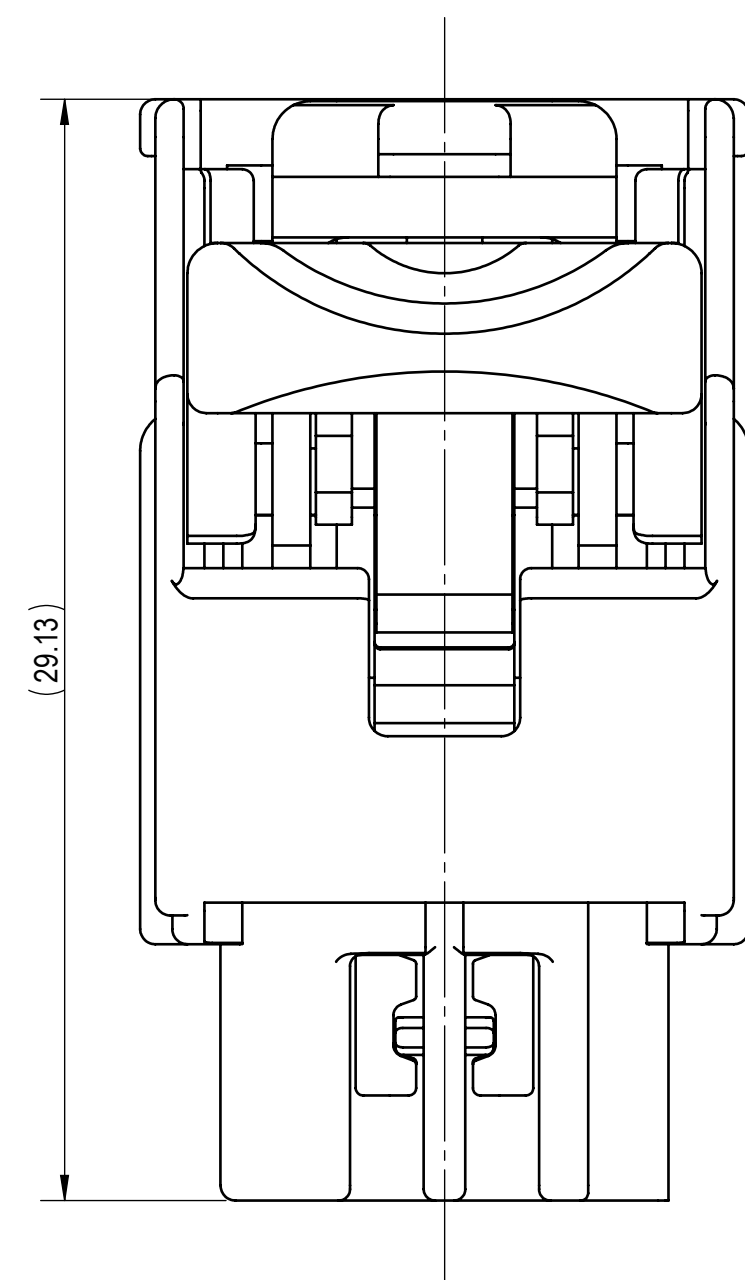
7298-5460-30, ETC.
KEYWAY A



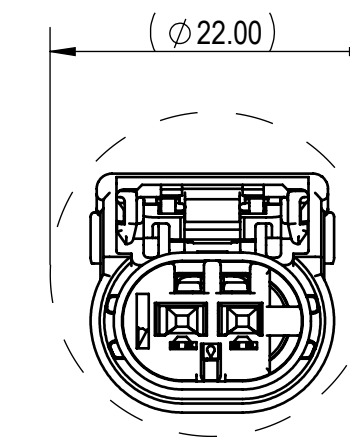
EXPLODED VIEW
(2/1)

SUB-ASSEMBLY PART NUMBER		NO.	PART NUMBER	PART NAME	MATERIAL	COLOR	QUANTITY
SEE TABLE 2		①	7198-5460-30	2P 0.64mm RH SEALED FEMALE CONNECTOR HOUSING	PBT-GF15	BLACK	1
		②	7137-3367-50	2P 0.64mm RH SEALED FEMALE CONNECTOR INTERFACE SEAL	SILICONE	RED	1
		③	SEE TABLE 2	2P 0.64mm RH SEALED FEMALE CONNECTOR TPA	PBT-GF15	SEE TABLE 2	1
		④	7172-1858-50	2P 0.64mm RH SEALED FEMALE CONNECTOR CPA	PBT-GF15	RED	1
SEE TABLE 2		①	7198-5460-30	2P 0.64mm RH SEALED FEMALE CONNECTOR HOUSING	PBT-GF15	BLACK	1
		②	7137-3367-50	2P 0.64mm RH SEALED FEMALE CONNECTOR INTERFACE SEAL	SILICONE	RED	1
		③	SEE TABLE 2	2P 0.64mm RH SEALED FEMALE CONNECTOR TPA	PBT-GF15	SEE TABLE 2	1

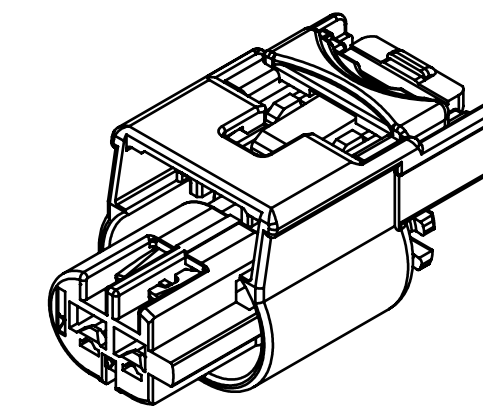
SUB-ASSEMBLY PART NUMBER	TPA PART NUMBER	KEYWAY	CPA	COLOR	MASS (g)
7298-5460-30	7172-1857	A	Y	NATURAL	(3.20g)
7298-5461-30	7172-1857	A	N	NATURAL	(2.90g)



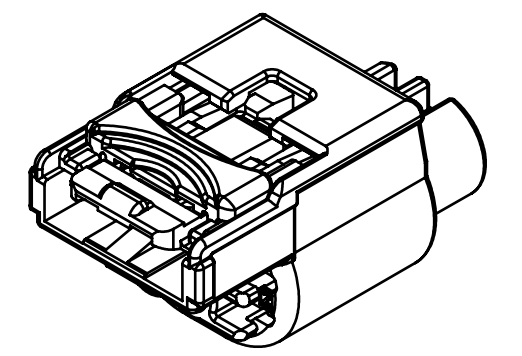
SECTION A-A
WITHOUT CPA



RECOMMENDED PASS-THROUGH
HOLE DIMENSION
(1mm CLEARANCE ALL AROUND)
(2/1)



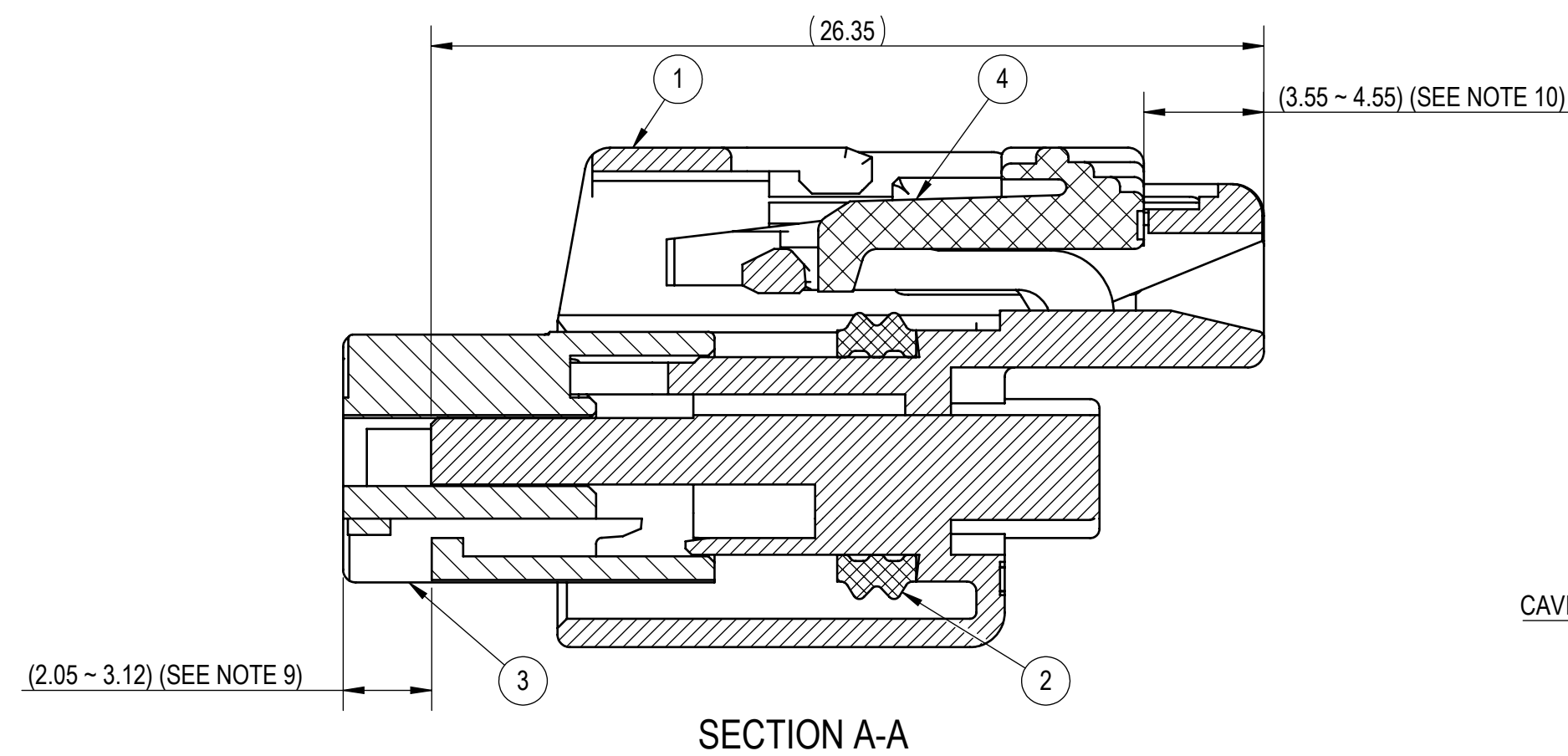
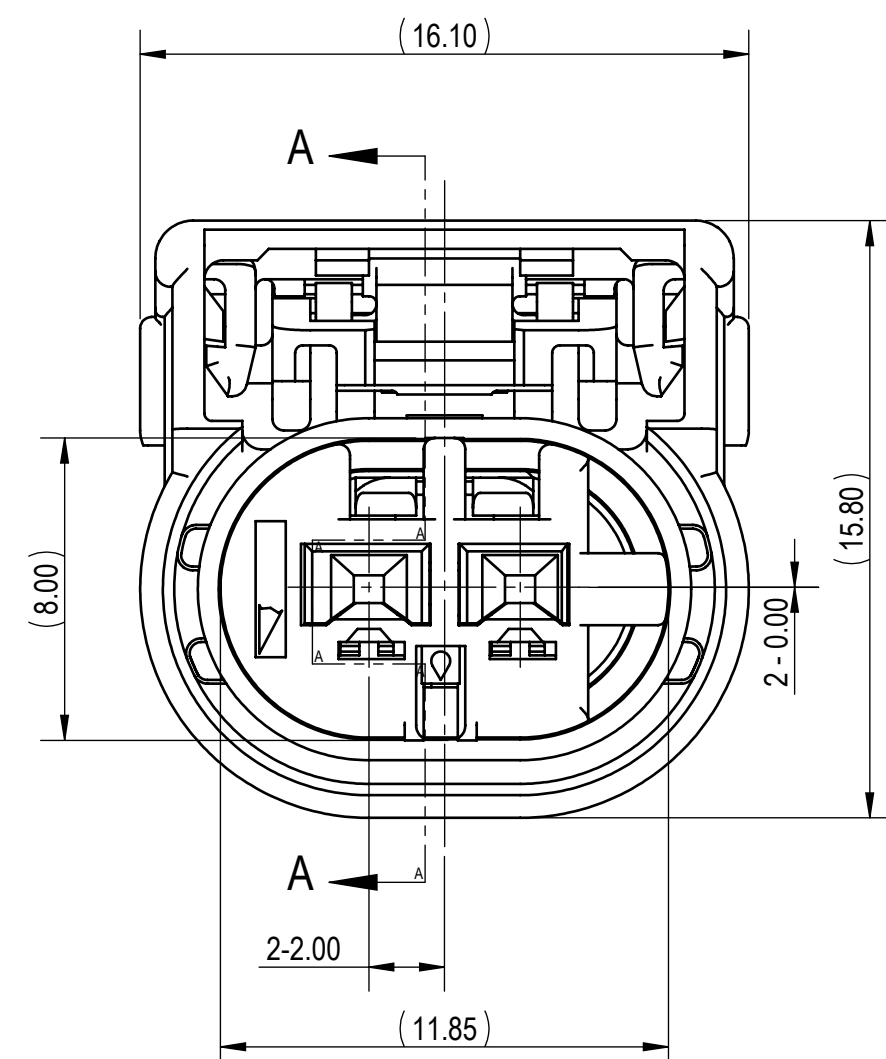
FRONT ISOMETRIC VIEW
(2/1)



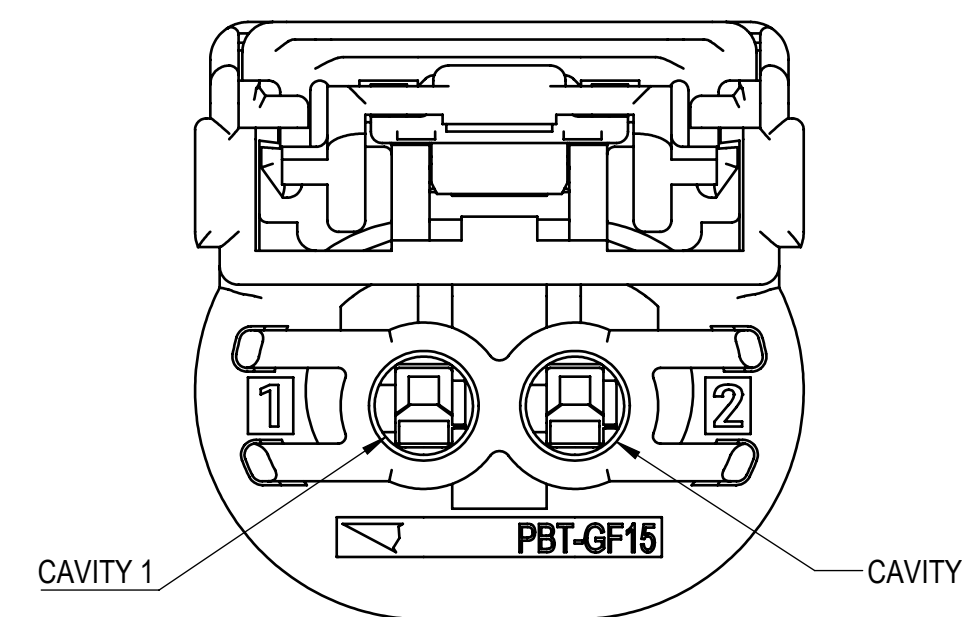
REAR ISOMETRIC VIEW
(2/1)

NOTES:

- PARTS MUST BE PURCHASED FROM YAZAKI.
- PARTS MUST BE FREE OF FLASH AND IMPERFECTIONS THAT AFFECT FUNCTION.
- APPLICABLE TERMINAL: SEE 7116-4415-02:R DRAWING (RH TYPE 0.35mm² - 0.5mm²)
MAX WIRE OD: 1.60mm
MIN WIRE OD: 1.10mm
- APPLICABLE WIRE SEAL: SEE 7158-3165-90:R DRAWING
- APPLICABLE CAVITY PLUG: SEE 7158-3169-40:R DRAWING
- MATING PART NUMBER: SEE 7298-5460-30:A
- PART SATISFIES PF-90012 CHANGE LEVEL A, JULY 2020, (T3,V1,S3,MF2) WITH THE FOLLOWING EXCEPTIONS:
SECTION 6.4.2 J = CPA PRE-SET TO FULL:
6.1 MIN ~ 25.0 MAX (INLINE)
SECTION 6.4.2 J = CPA FULL TO PRE-SET:
6.0 MIN ~ 25.0 MAX (INLINE)
8.0 MIN ~ 25.0 MAX (DEVICE)
- PART TO COMPLY WITH YPES-31-038 REQUIREMENTS.
- THIS DIMENSION SHOWS THE PRE-SET POSITION OF THE TPA.
- THIS DIMENSION SHOWS THE PRE-SET POSITION OF THE CPA.
- THIS DRAWING IS TO BE USED FOR INTERNAL YAZAKI PSW SUBMISSION.
- HANDLING MANUAL NUMBER: YPES-15-2002E.
- CONNECTOR IS CAPABLE OF ACCEPTING A DRESS COVER.



SECTION A-A



ISSUE MARK

LET	DATE	REVISION RECORD	NO.	CHKD
-	02-15-2021	NEW	C21-A146	A.S.

GENERAL TOLERANCE											
A	±0.15	±0.20	±0.30	±0.50	±0.75	R5 MAX	R10 MAX	R20 MAX	R20 OVR	ANGLE	ECCENT
B	±0.20	±0.30	±0.55	±0.95	±1.40	±0.20	±0.30	±0.50	±2.50	±3°	0.1
C	±0.30	±0.50	±0.80	±1.40	±2.00					±3°	0.15
										MASS	SEE TABLE 2

CUSTOMER		CUSTOMER DWG NO.		MTRL SPEC.		TREAT. & FIN.	
CUSTOMER PART NO.		CUSTOMER DWG NO.		SEE TABLE		N/A	
OFFICE YNA		TRIAL PART NO.		NAME			
VENDOR		VENDOR NO.		2P 0.64mm RH SEALED FEMALE CONNECTOR SUB-ASSEMBLY			
DWG TYPE R		DWG SOURCE 7298-5460-30:M		DWG DATE 02-15-2021		PART NO. 7298-5460-30, ETC.	
APPROVED		CHECKED		CHECKED		DWG NO. 7298-5460-30:R	
DESIGN		DRAWN		ESTHER CRESWELL		YAZAKI CORPORATION	
03-23-2020		03-24-2021		ANDREA SOSA			

Mouser Electronics

Authorized Distributor

Click to View Pricing, Inventory, Delivery & Lifecycle Information:

[Yazaki:](#)

[7298546030](#)