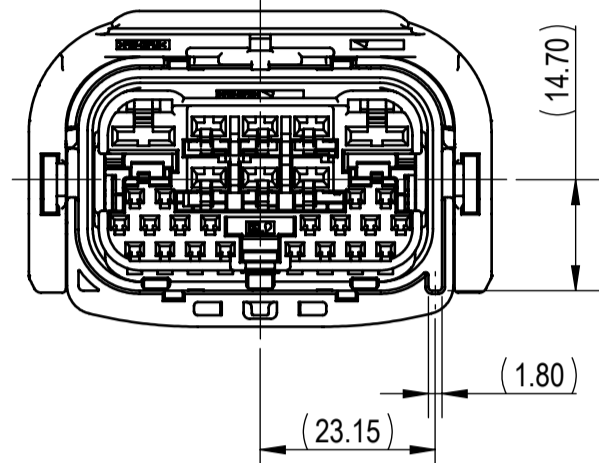
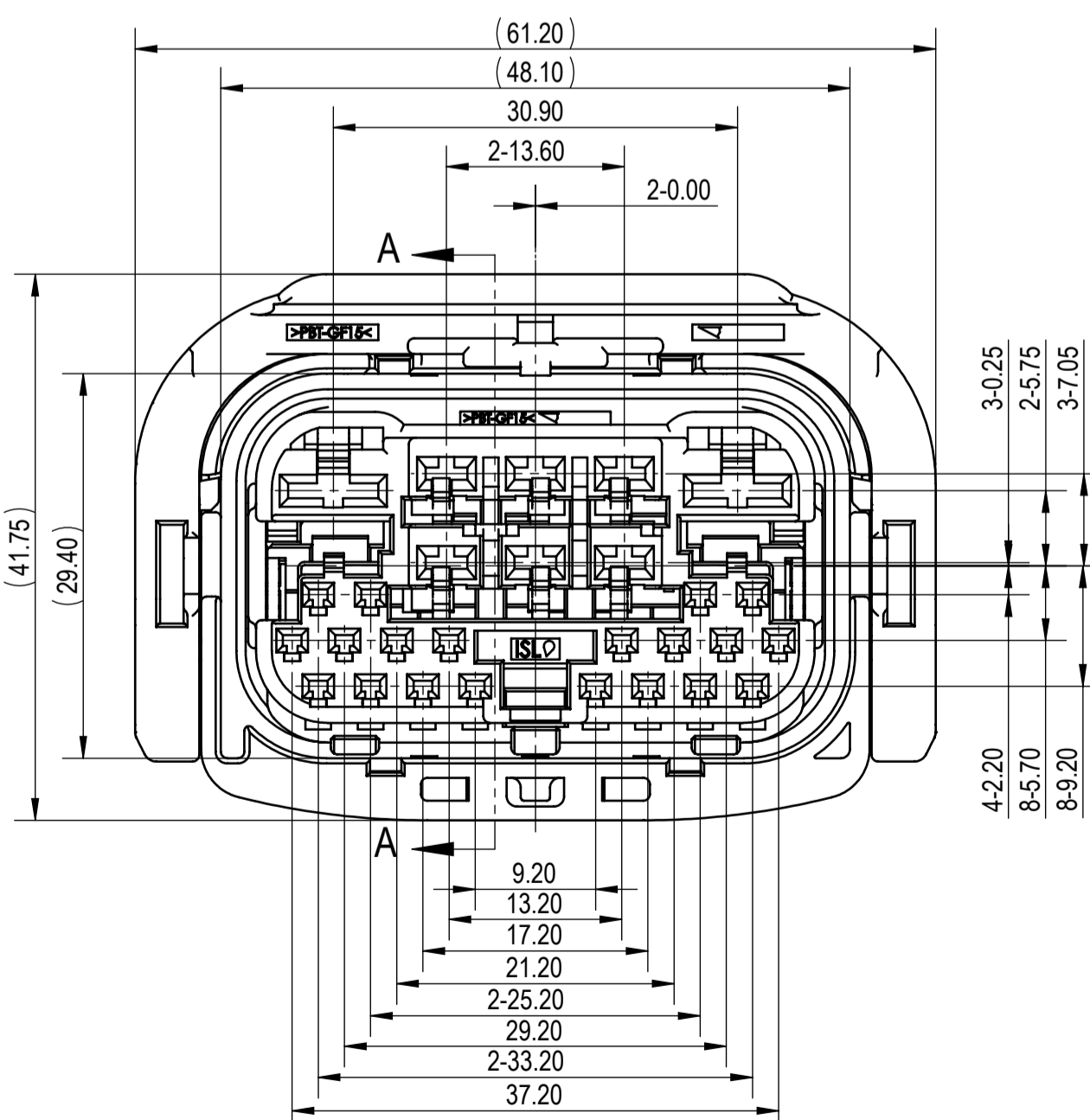
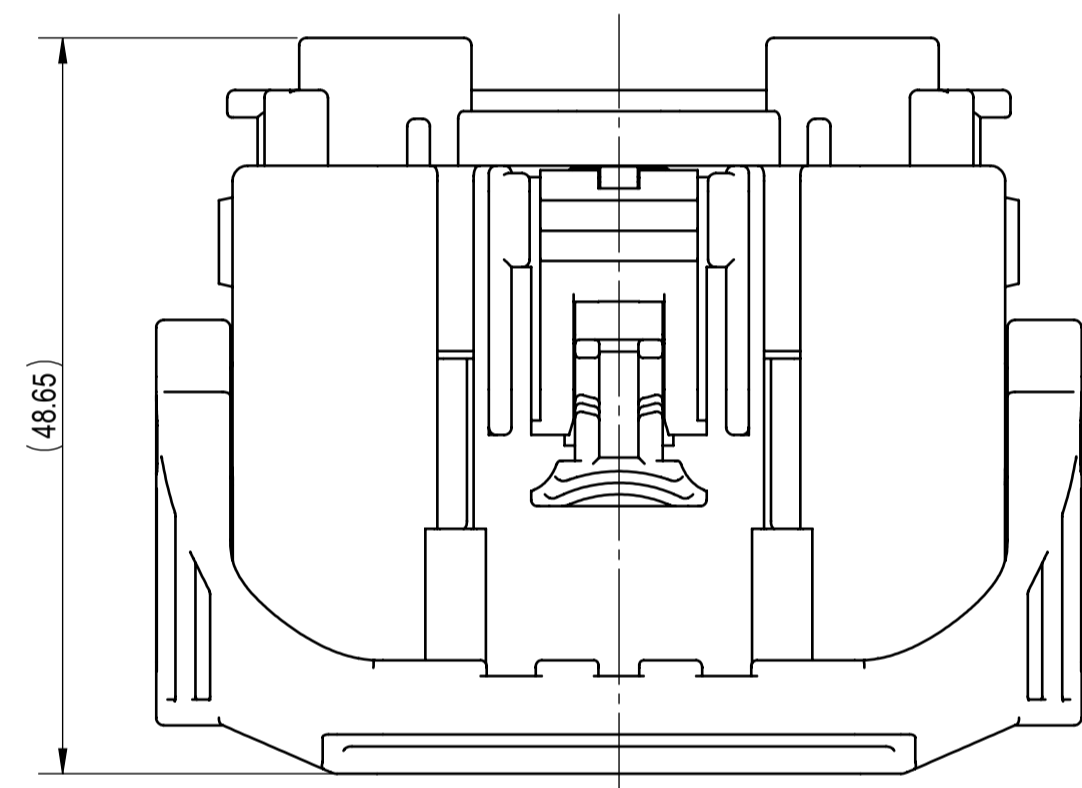


7298-4826-30, ETC.  
KEYWAY A

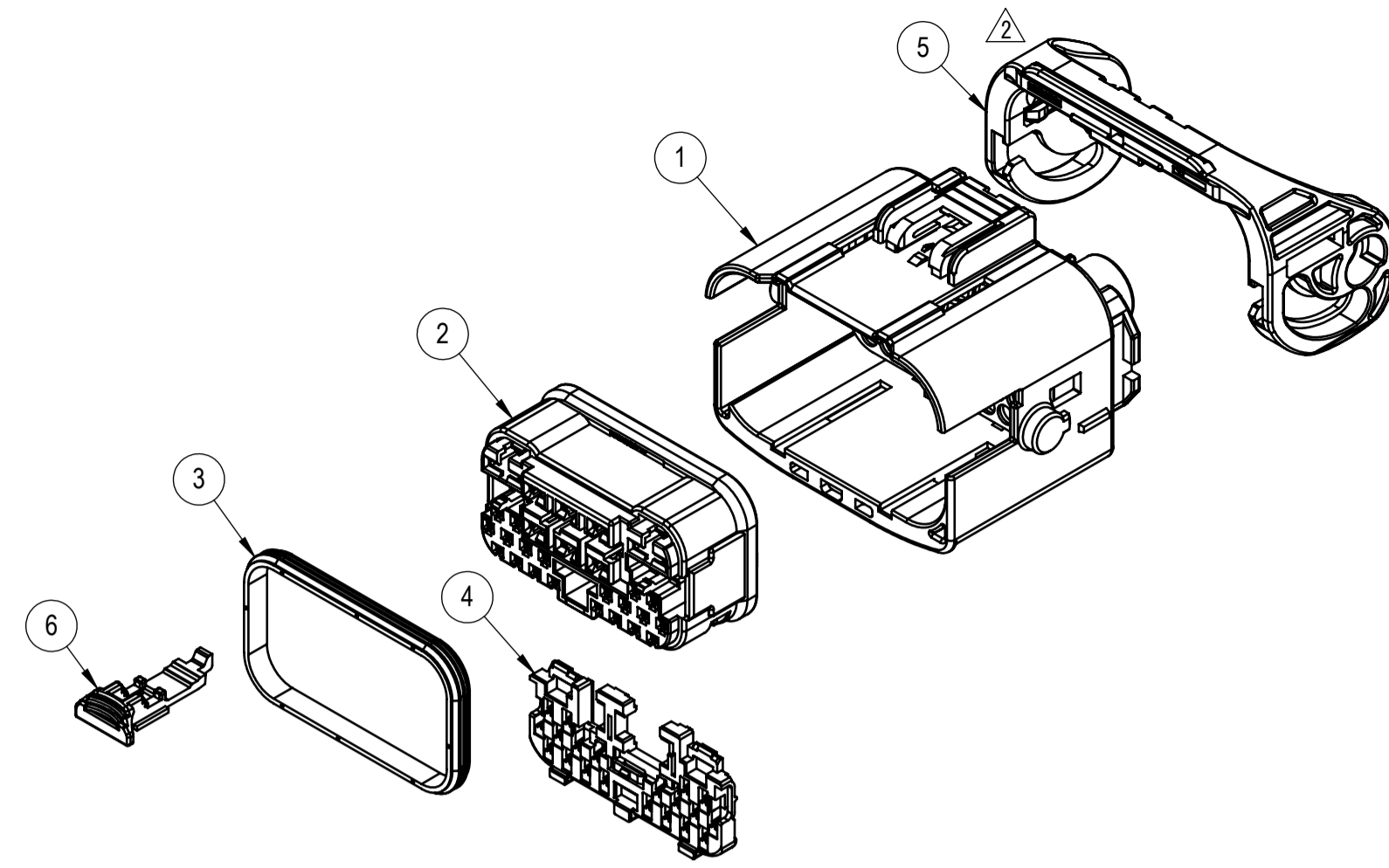


7298-4832-40  
KEYWAY B

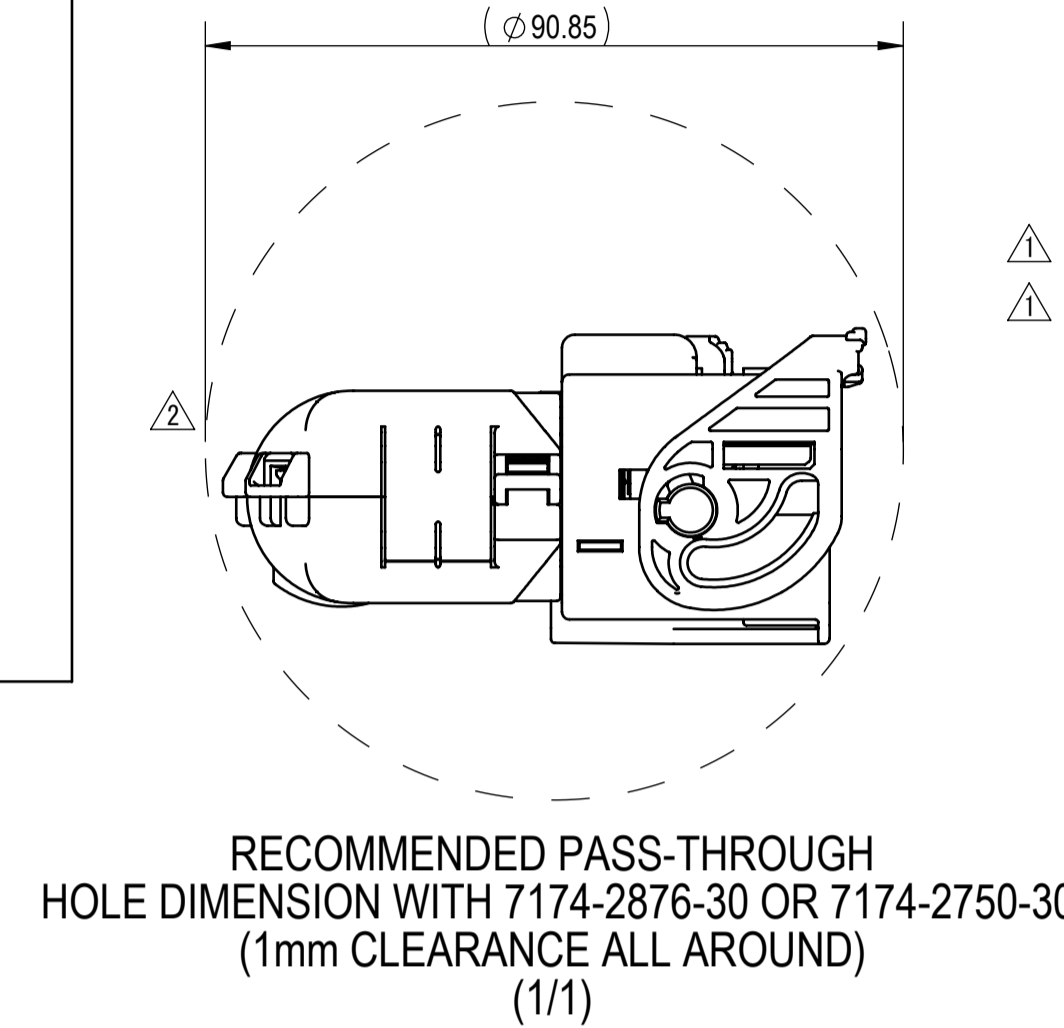


(1/1)

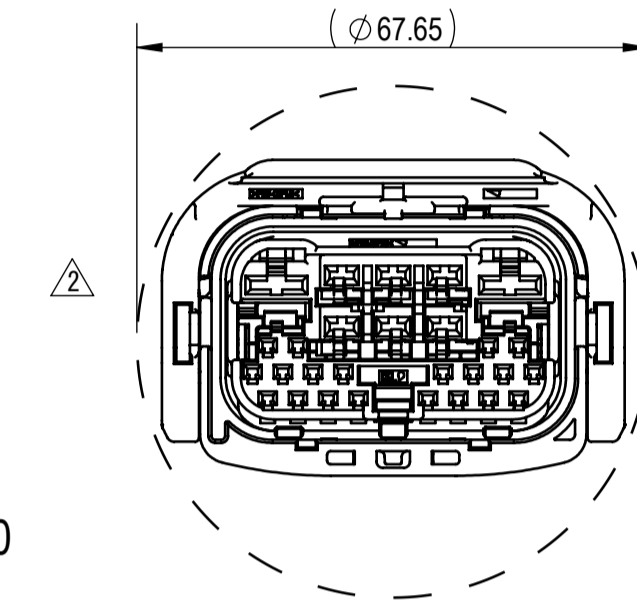
(1/1)



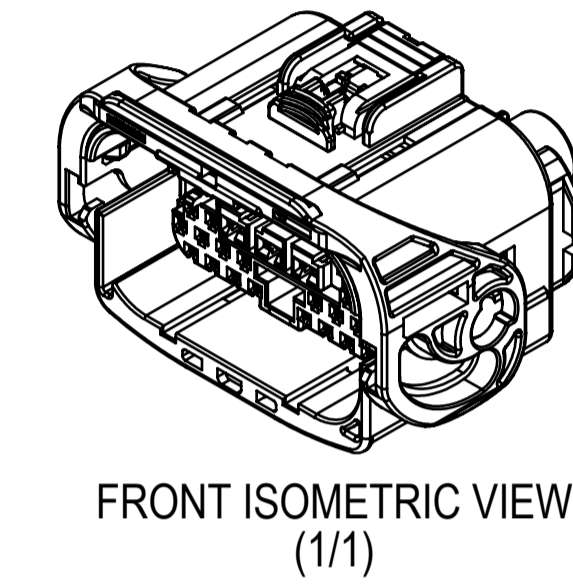
EXPLODED VIEW  
(1/1)



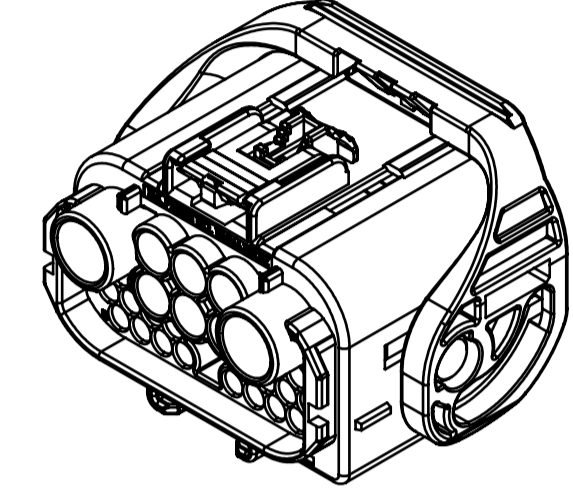
RECOMMENDED PASS-THROUGH  
HOLE DIMENSION WITH 7174-2876-30 OR 7174-2750-30  
(1mm CLEARANCE ALL AROUND)  
(1/1)



RECOMMENDED PASS-THROUGH  
HOLE DIMENSION WITH 7174-2721-30 OR WITHOUT COVER  
(1mm CLEARANCE ALL AROUND)  
(1/1)



FRONT ISOMETRIC VIEW  
(1/1)

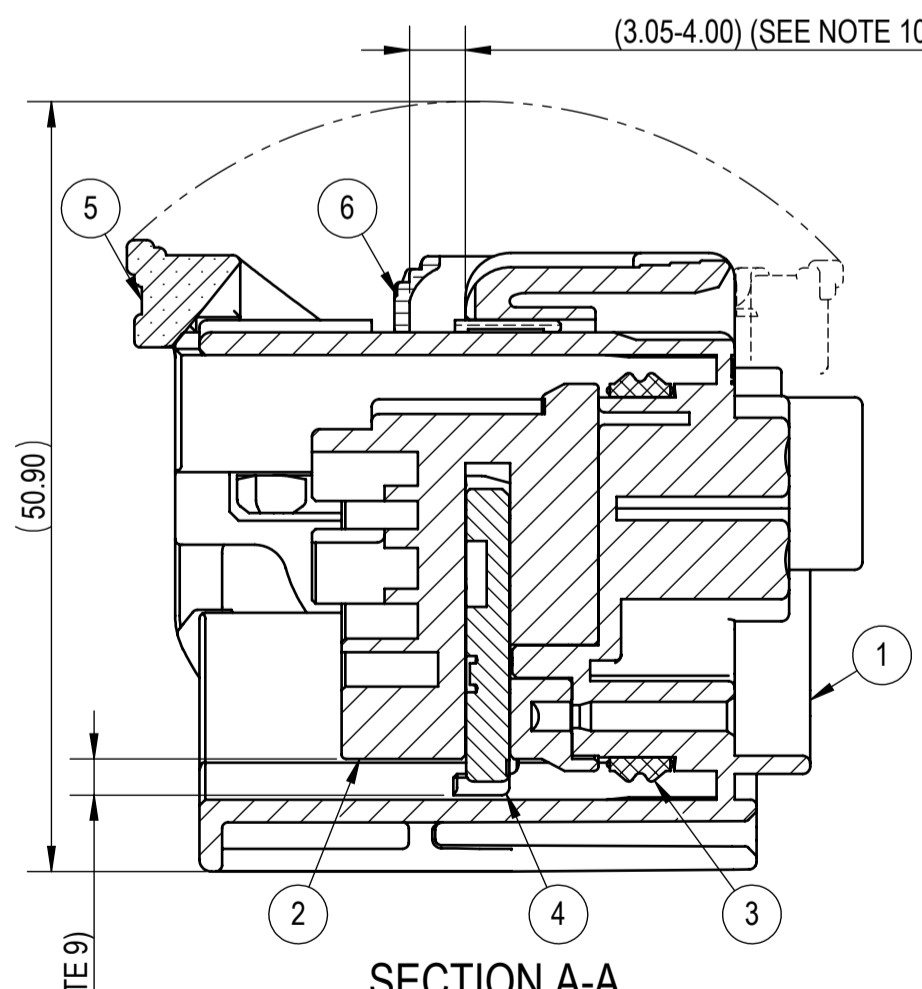


REAR ISOMETRIC VIEW  
(1/1)

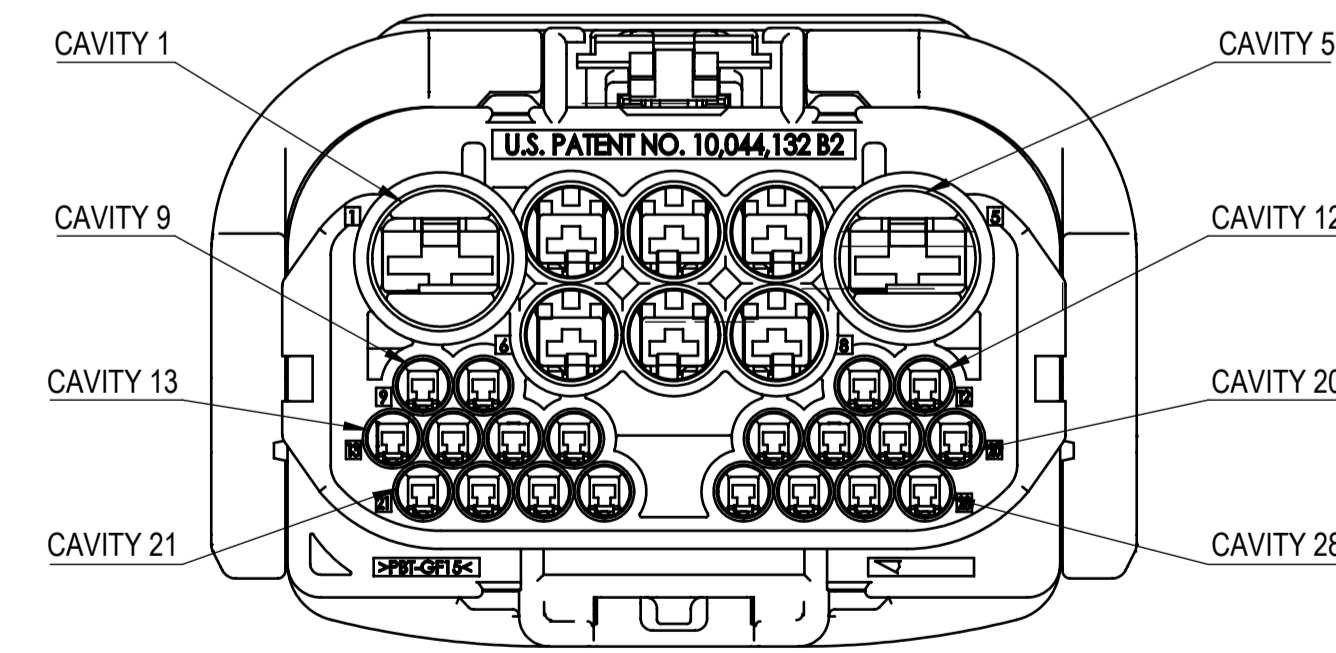
SUB-ASSEMBLY PART NUMBER	NO.	PART NUMBER	PART NAME	MATERIAL	COLOR	QUANTITY
SEE TABLE 2	①	SEE TABLE 2	28P (2x6.3mm + 6x2.8mm + 20x1.2mm) SEALED FEMALE OUTER HOUSING	PBT-GF15	SEE TABLE 2	1
	②	7198-4814-30	28P (2x6.3mm + 6x2.8mm + 20x1.2mm) SEALED FEMALE INNER HOUSING	PBT-GF15	BLACK	1
	③	7137-3320-90	28P (2x6.3mm + 6x2.8mm + 20x1.2mm) SEALED FEMALE INTERFACE SEAL	SILICONE	BLUE	1
	④	7172-1811	28P (2x6.3mm + 6x2.8mm + 20x1.2mm) SEALED FEMALE ISL	PBT-GF15	NATURAL	1
	⑤	7173-5535	28P (2x6.3mm + 6x2.8mm + 20x1.2mm) SEALED FEMALE LEVER	PBT-GF15	NATURAL	1
	⑥	7172-1555-50	40P (2x6.3mm + 10x2.8mm + 28x1.2mm) SEALED FEMALE CPA	PBT-GF15	RED	1

SUB-ASSEMBLY PART NUMBER	HOUSING PART NUMBER	YAZAKI INLINE MATING PART NUMBER	KEYWAY	COLOR	X = BLOCKED CAVITY																											
					1.2																											
					6.3	2.8	6.3	2.8	1	2	3	4	5	6	7	8	9	10	11	12	13	14	15	16	17	18	19	20	21	22	23	24
7298-4826-30	7198-4826-30	7297-4838-30	A	BLACK																												
7298-4832-40	7198-4832-40	7297-4844-40	B	LIGHT GRAY																												
7298-4826-70	7198-4826-70	7297-4838-70	A	YELLOW																												
7298-9244-70	7198-9244-70	7297-9243-70	A	YELLOW	X	X	X		X	X	X												X									

- NOTES:
- PARTS MUST BE PURCHASED FROM YAZAKI.
  - PARTS MUST BE FREE OF FLASH AND IMPERFECTIONS THAT AFFECT FUNCTION.
  - APPLICABLE TERMINAL: SEE 7216-7626-02:R (YAZAKI 1.2 YMT) (CAVITIES 9-28) OR 10304894 (KOSTAL 1.2 MLK TANG)  
 MAX WIRE OD: 2.10mm  
 MIN WIRE OD: 1.20mm  
 SEE 7116-4150-02:R (YAZAKI 2.8 YESC) (CAVITIES 2-4, 6-8)  
 MAX WIRE OD: 3.70mm  
 MIN WIRE OD: 1.20mm  
 SEE 7116-4140-02:R (YAZAKI 6.3 YESC) (CAVITIES 1, 5)  
 MAX WIRE OD: 4.30mm  
 MIN WIRE OD: 1.40mm
  - APPLICABLE WIRE SEAL:  
 1.2mm (CAVITIES 9-28): SEE 7172-5568-70:R DRAWING (YAZAKI 1.2 YMT) (Ø3.55mm CAVITY SIZE)  
 SEE 10129550 DRAWING (KOSTAL 1.2 MLK) (Ø3.55mm CAVITY SIZE)  
 SEE C-967067 DRAWING (TYCO 1.2 AMP)  
 2.8mm (CAVITIES 2-4, 6-8): SEE 7158-3111-60:R DRAWING (YAZAKI 2.8mm YESC)  
 6.3mm (CAVITIES 1, 5): SEE 7158-3081-50:R DRAWING (YAZAKI 6.3mm YESC)  
 SEE 7158-3084-40:RA DRAWING (YAZAKI 6.3mm YESC)
  - APPLICABLE CAVITY PLUG:  
 1.2mm (CAVITIES 9-28): SEE 7172-5572-90:R DRAWING (YAZAKI YMT, Ø3.55mm CAVITY SIZE)  
 SEE 10129550 DRAWING (KOSTAL MLK, Ø3.55mm CAVITY SIZE)  
 2.8mm (CAVITIES 2-4, 6-8): SEE 7158-3114-90:R DRAWING (YAZAKI YESC)  
 6.3mm (CAVITIES 1, 5): SEE 7158-3080-60:R DRAWING (YAZAKI YESC)
  - MATING PART NUMBER: SEE TABLE 2
  - PART SATISFIES PF-90012, REV. C, 17 APRIL 2020. (T3/V2/S3/MF3)
  - PART TO COMPLY WITH YPES-31-038 REQUIREMENTS.
  - THIS DIMENSION SHOWS THE PRE-SET POSITION OF THE ISL.
  - THIS DIMENSION SHOWS THE PRE-SET POSITION OF THE CPA.
  - THIS DIMENSION IS TO BE USED FOR INTERNAL YAZAKI PSW SUBMISSION.
  - CLIP SLOT: 17mm CLIP SLOT. (USCAR 17mm CLIP SLOT, EWCAP-005-17, REV D)
  - HANDLING MANUAL NUMBER: YPES-15-1844
  - APPLICABLE WIRE COVER PART NUMBER:  
 180° WIRE COVER: 7174-2721-30  
 90° WIRE COVER: 7174-2750-30  
 90° SHORT WIRE COVER: 7174-2876-30



SECTION A-A



CAVITY 1  
CAVITY 5  
CAVITY 9  
CAVITY 12  
CAVITY 13  
CAVITY 20  
CAVITY 21  
CAVITY 28

CUSTOMER PART NO.		CUSTOMER DWG NO.		MATERIAL SPEC.		TREAT. & FIN.	
				SEE TABLE		N/A	
OFFICE YNA		TRIAL PART NO.		NAME			
				28P (2x6.3mm + 6x2.8mm + 20x1.2mm)			
VENDOR		VENDOR NO.		SEALED FEMALE CONNECTOR SUB-ASSEMBLY			
				PART NO. 7298-4826-30, ETC.			
				DWG NO. 7298-4826-30:R			
				YAZAKI CORPORATION			

	GENERAL TOLERANCE										ANGLE	ECCENT	DWG TYPE	DWG SOURCE	DWG DATE	UNIT	SCL	ANGLE	
	10MAX	50MAX	100MAX	250MAX	250OVR	R5 MAX	R10 MAX	R20 MAX	R20 OVR	±3°									
A	±0.15	±0.20	±0.30	±0.50	±0.75									R	11-25-2021	mm	2/1	3	
B	±0.20	±0.30	±0.55	±0.95	±1.40	±0.20	±0.30	±0.50	±2.50		±3°	0.1	APPROVED	CHECKED	CHECKED	DESIGN	DRAWN		
C	±0.30	±0.50	±0.80	±1.40	±2.00						±3°	0.15				ESTHER CRESWELL	ISABEL BACA		
LET	DATE	REVISION RECORD		NO.	CHKD														

03-29-2023	ADDED APPLICABLE WIRE COVER AND ADDED PASS THROUGH VIEWS AND CORRECTION LEVER POSITION	C23-A196	I.B.	
07-14-2022	ADDED NEW PART NUMBERS	C22-A367	A.C.	
11-25-2021	NEW	C21-A849	M.S.	
LET	DATE	REVISION RECORD	NO.	CHKD

# Mouser Electronics

Authorized Distributor

Click to View Pricing, Inventory, Delivery & Lifecycle Information:

[Yazaki:](#)

[7298482630](#) [7298483240](#)