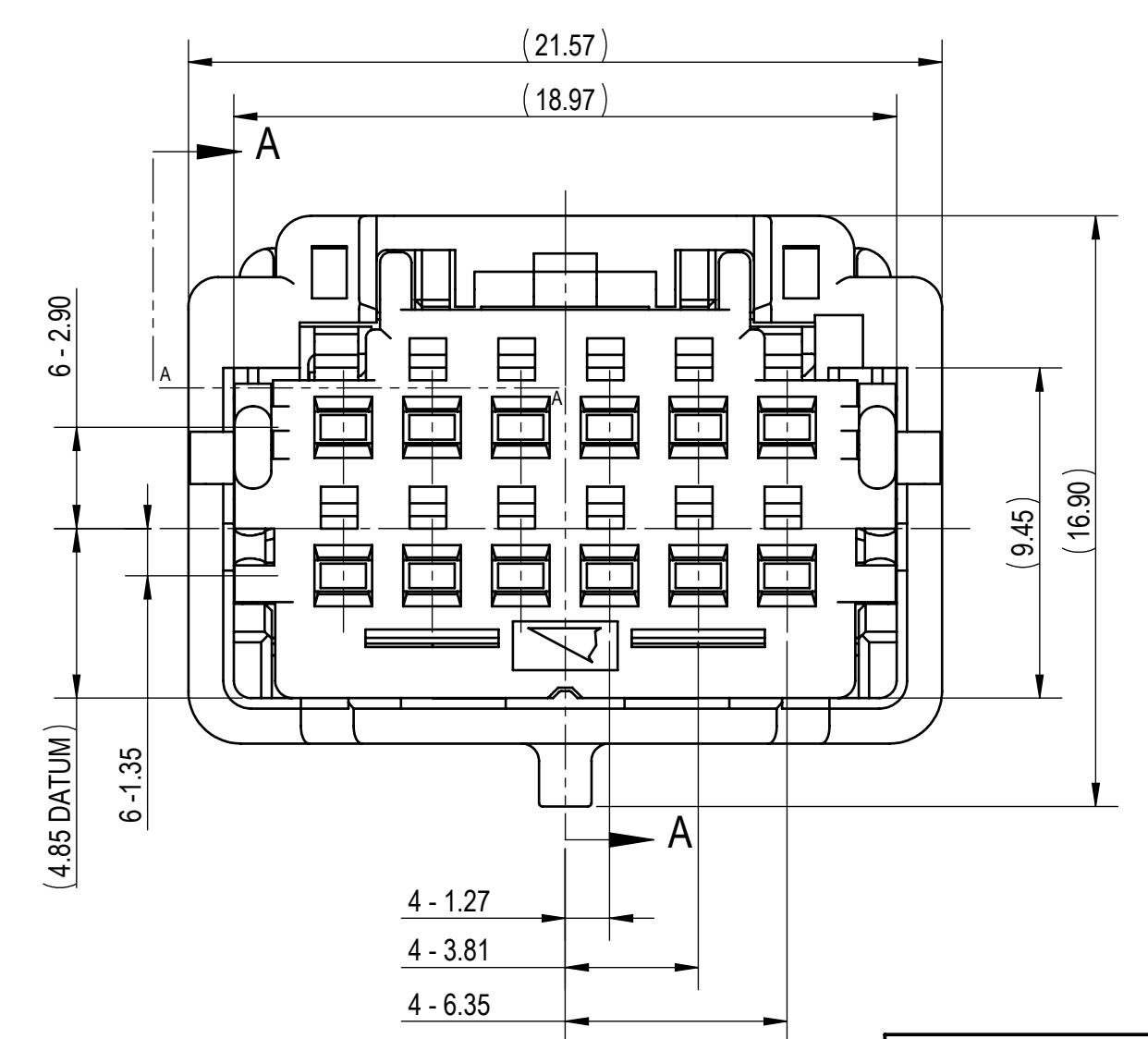
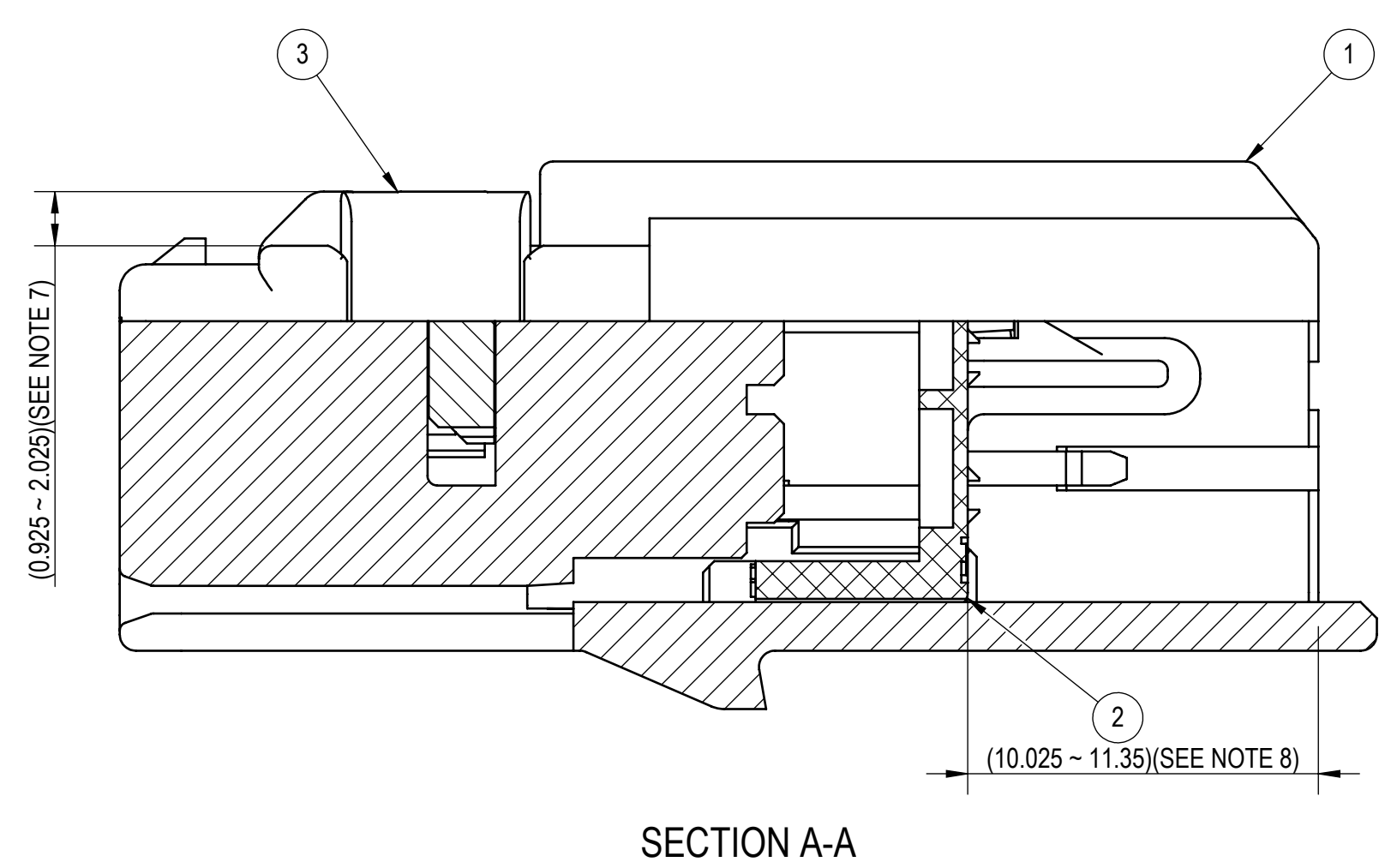
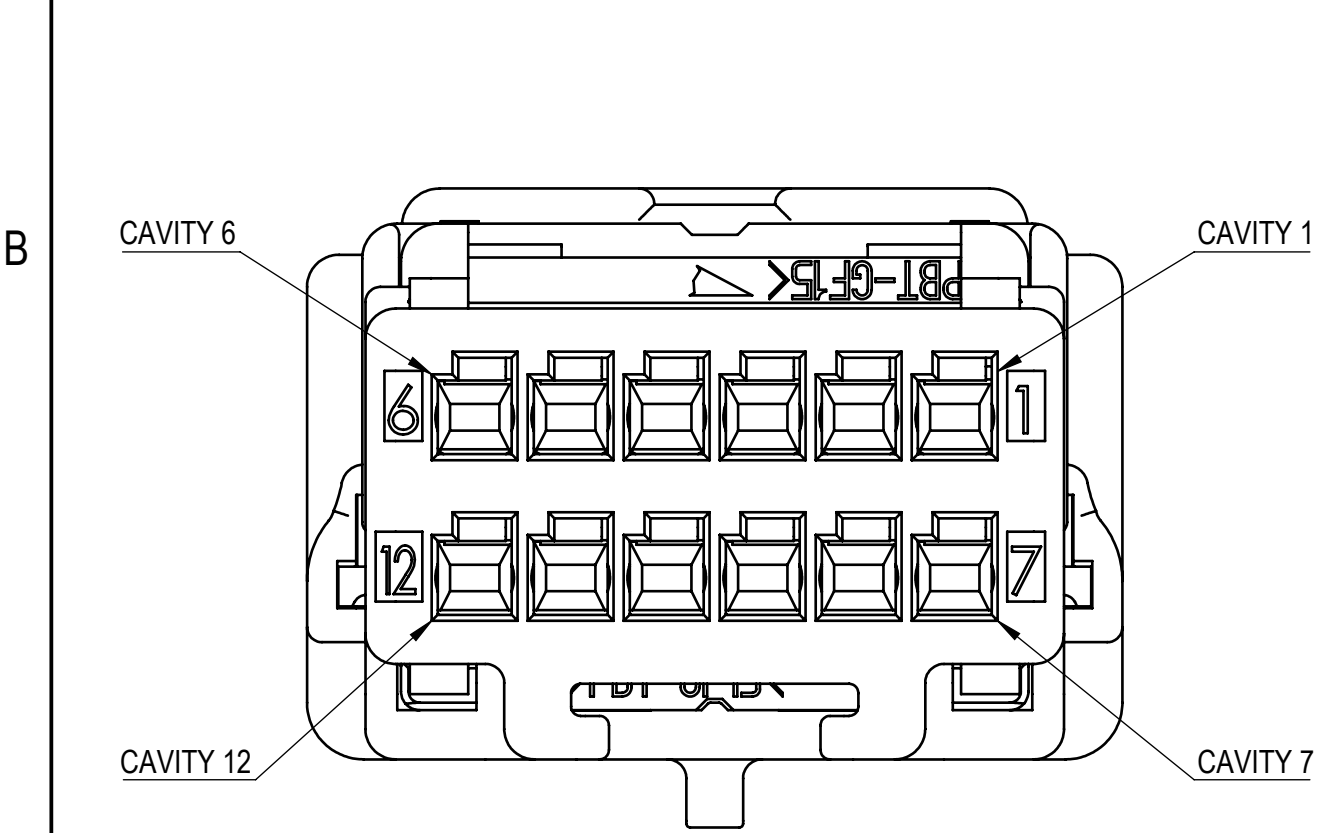
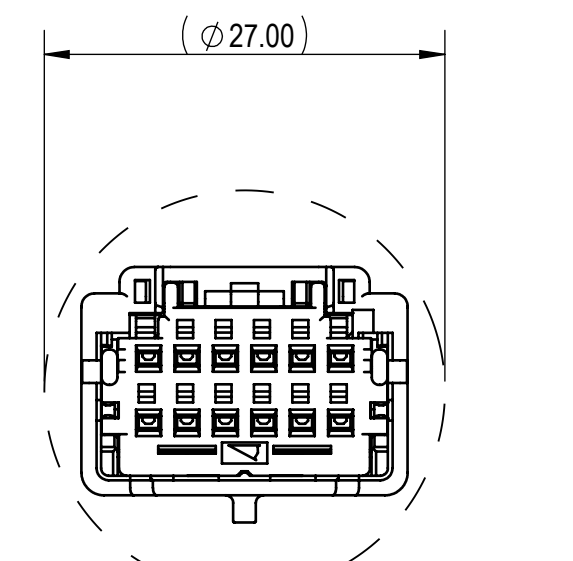
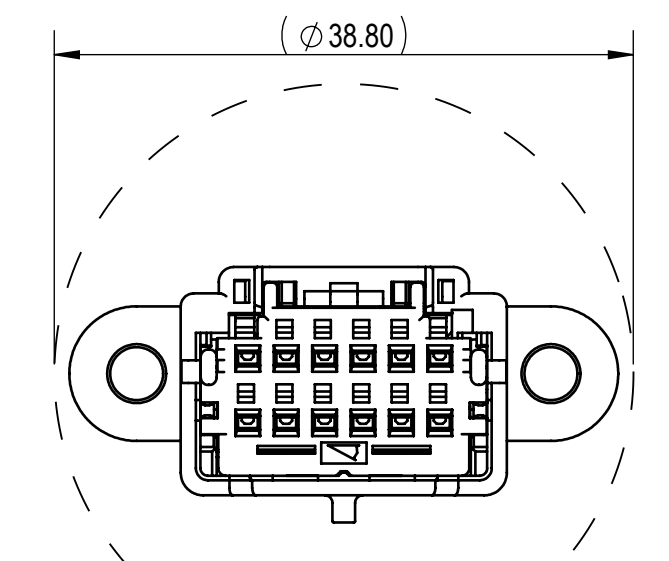
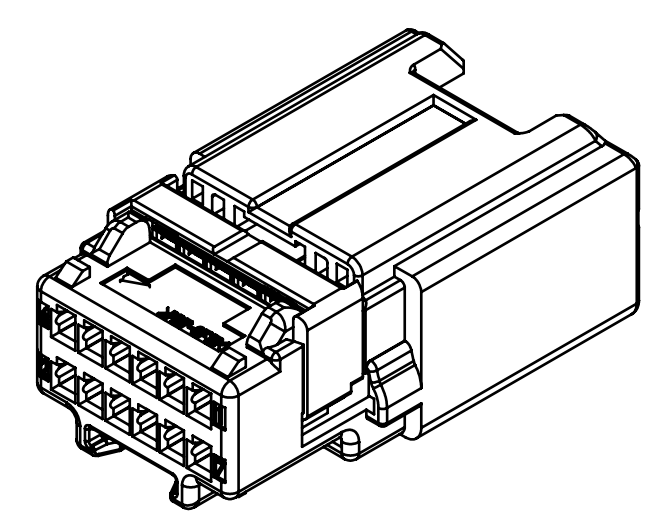
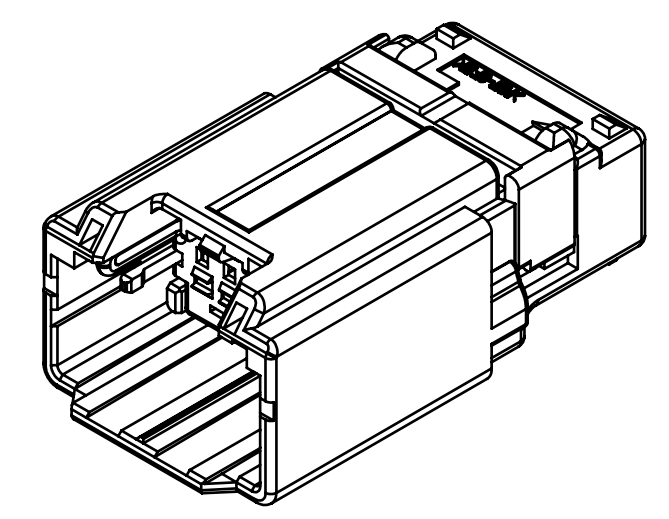
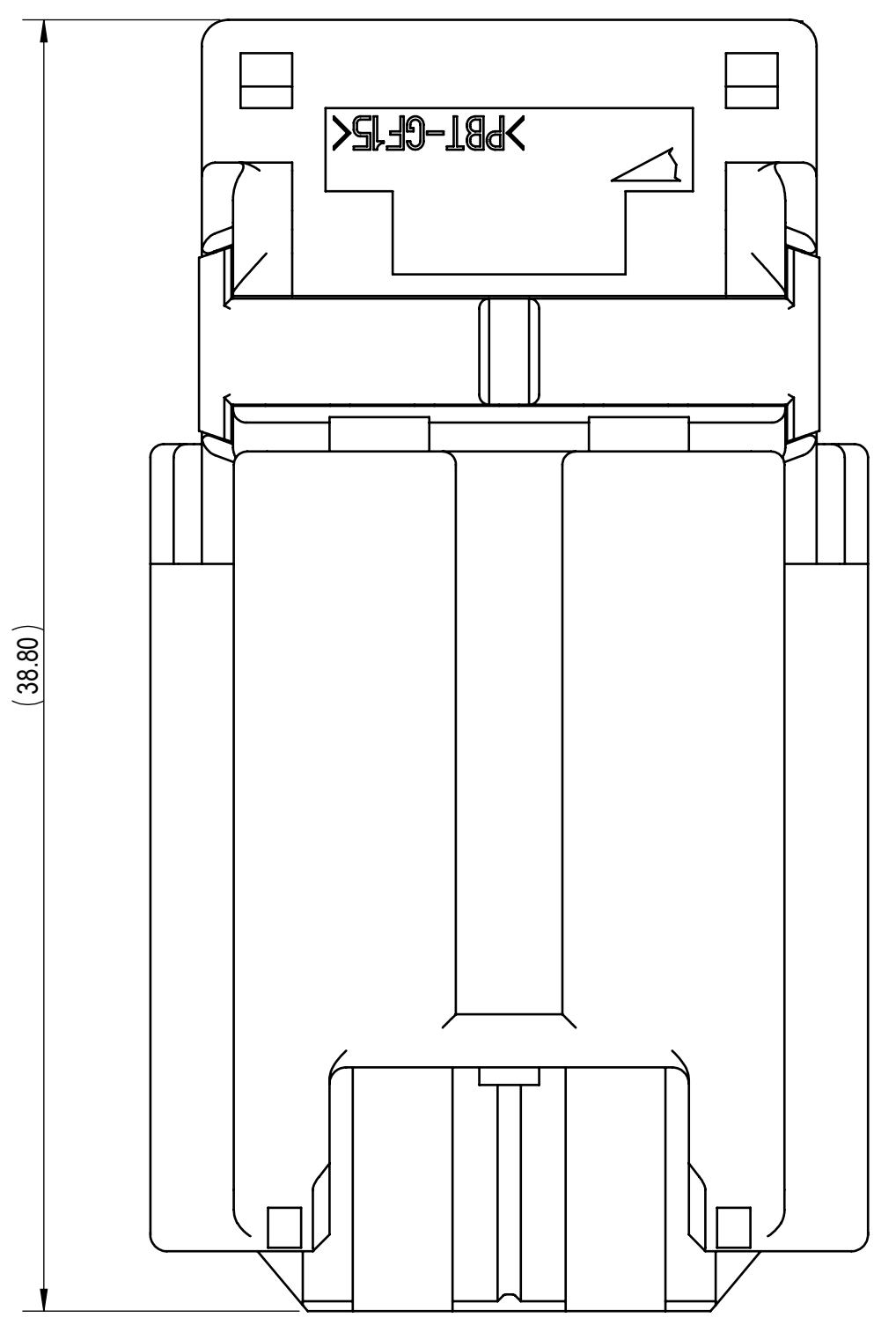


TABLE 1		TABLE 2						
SUB-ASSEMBLY PART NUMBER	NO.	PART NUMBER	PART NAME		MATERIAL	COLOR	QUANTITY	
SEE TABLE 2	①	SEE TABLE 2	12P 1.2mm UNSEALED CONNECTOR HOUSING		PBT-GF15	SEE TABLE 2	1	
SEE TABLE 2	②	7172-1698	12P 1.2mm UNSEALED CONNECTOR MBS		PBT-GF15	NATURAL	1	
SEE TABLE 2	③	7172-1699	12P 1.2mm UNSEALED CONNECTOR ISL		PBT-GF15	NATURAL	1	

SUB-ASSEMBLY PART NUMBER	HOUSING PART NUMBER	CONFIGURATION	KEYWAY	COLOR	MASS (g)	YAZAKI INLINE MATING PART NUMBER
7297-2973-30	7197-2973-30	CLIP SLOT	A	BLACK	(6.31)	7298-2971-30
7297-2974-30	7197-2974-30	BOLT HOLES	A	BLACK	(6.77)	7298-2972-30
7297-4702-40	7197-4702-40	CLIP SLOT	B	LIGHT GRAY	(6.31)	7298-4700-40
7297-4701-40	7197-4701-40	BOLT HOLES	B	LIGHT GRAY	(6.77)	7298-4703-40

- NOTES:
- PARTS MUST BE PURCHASED FROM YAZAKI.
  - PARTS MUST BE FREE OF FLASH AND IMPERFECTIONS THAT AFFECT FUNCTION.
  - APPLICABLE TERMINAL: SEE 7195-1371-02-R DRAWING (1.2mm YCO UNSEALED) OR 33101338 DRAWING (APTIV 1.2mm OCS UNSEALED) MAX WIRE OD: 1.90mm
  - MATING PART NUMBER: SEE TABLE 2
  - PART SATISFIES GMW3191, JUNE 2012 (T2V1/S1/MF2).
  - PART TO COMPLY WITH YPES-31-038 REQUIREMENTS.
  - THIS DIMENSION SHOWS THE PRE-SET POSITION OF THE ISL.
  - THIS DIMENSION SHOWS THE PRE-SET POSITION OF THE MBS.
  - THIS DRAWING IS TO BE USED FOR INTERNAL YAZAKI PSW SUBMISSION.
  - CLIP SLOT: 7mm CLIP SLOT. (BASED ON USCAR 7mm CLIP SLOT, EWCAP-005-07, REV D)
  - HANDLING MANUAL NUMBER: YPES-15-1673E
  - CONNECTOR IS CAPABLE OF ACCEPTING A DRESS COVER.



07-21-2020	NEW	C20-A487	M.S.
LET	DATE	REVISION RECORD	NO. CHKD

GENERAL TOLERANCE											
A	±0.15	±0.20	±0.30	±0.50	±0.75	R5 MAX	R10 MAX	R20 MAX	R20 OVR	ANGLE ±3°	ECCENT 0.1
B	±0.20	±0.30	±0.55	±0.95	±1.40	±0.20	±0.30	±0.50	±2.50	±3°	0.1
C	±0.30	±0.50	±0.80	±1.40	±2.00					±3°	0.15
SPECIFIED										MASS	SEE TABLE 2

CUSTOMER PART NO.	CUSTOMER DWG NO.	MATL SPEC.	SEE TABLE	TREAT. & FIN.	N/A
OFFICE	YNA	TRIAL PART NO.	NAME 12P 1.2mm UNSEALED MALE		
VENDOR			CONNECTOR SUB-ASSEMBLY		
VENDOR NO.		DWG TYPE	DWG SOURCE	DWG DATE	UNIT
		R	7297-2973-30:M	07-21-2020	mm
		APPROVED	CHECKED	CHECKED	DESIGN
					DRAWN
					CHAD PARDO
					MICHELLE SANTILLAN
					04-19-2018
					03-19-2021
PART NO. CH. CODE		7297-2973-30, ETC.			
DWG NO.		7297-2973-30-R			
YAZAKI CORPORATION					

# Mouser Electronics

Authorized Distributor

Click to View Pricing, Inventory, Delivery & Lifecycle Information:

[Yazaki:](#)

[7297297430](#) [7297297330](#) [7297470140](#) [7297470240](#)