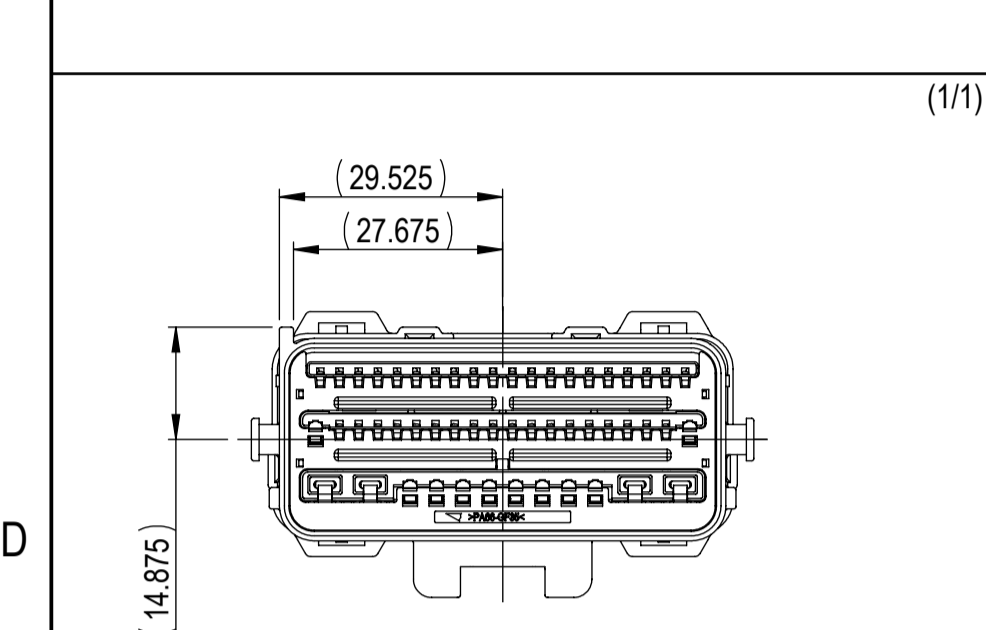
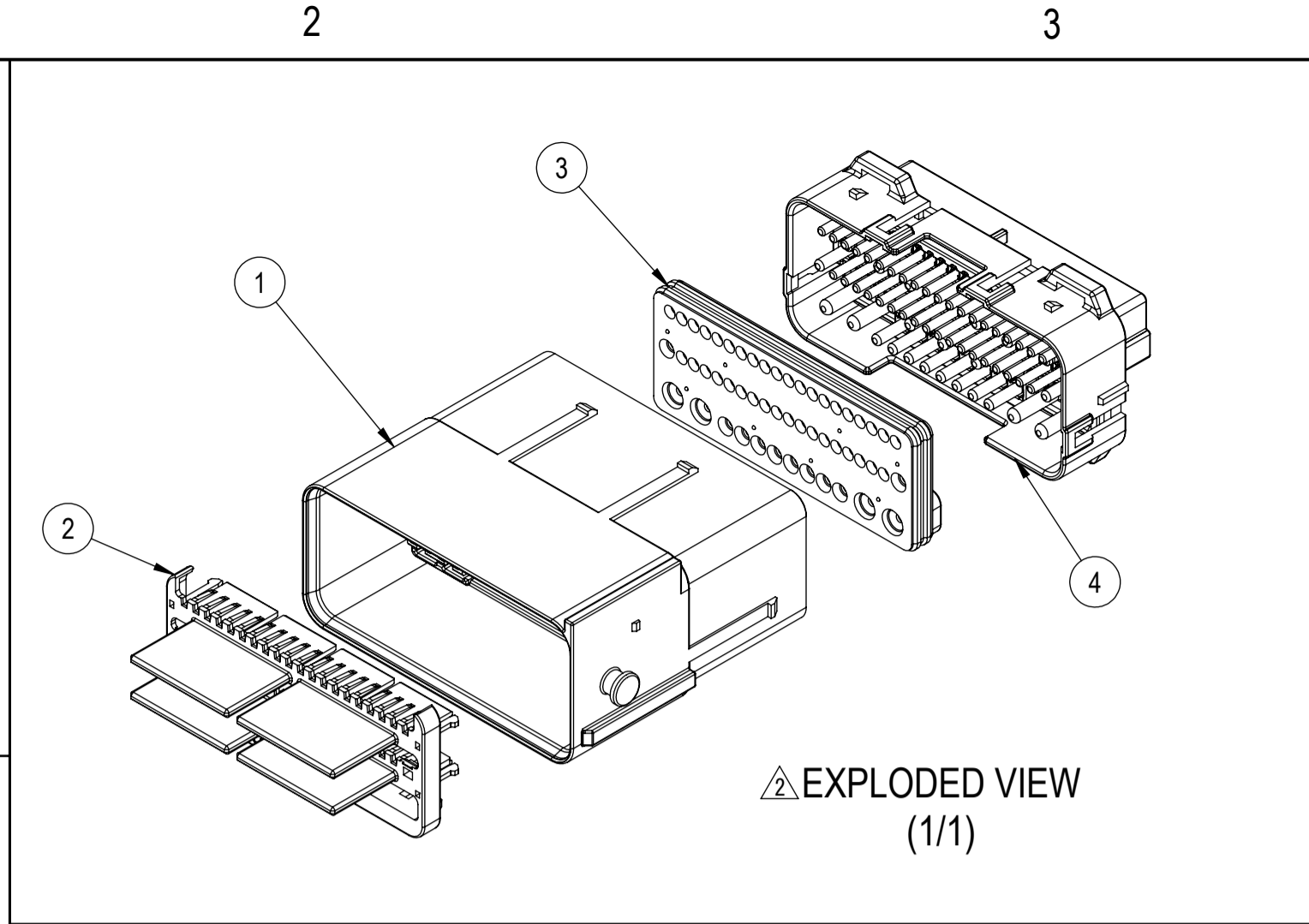


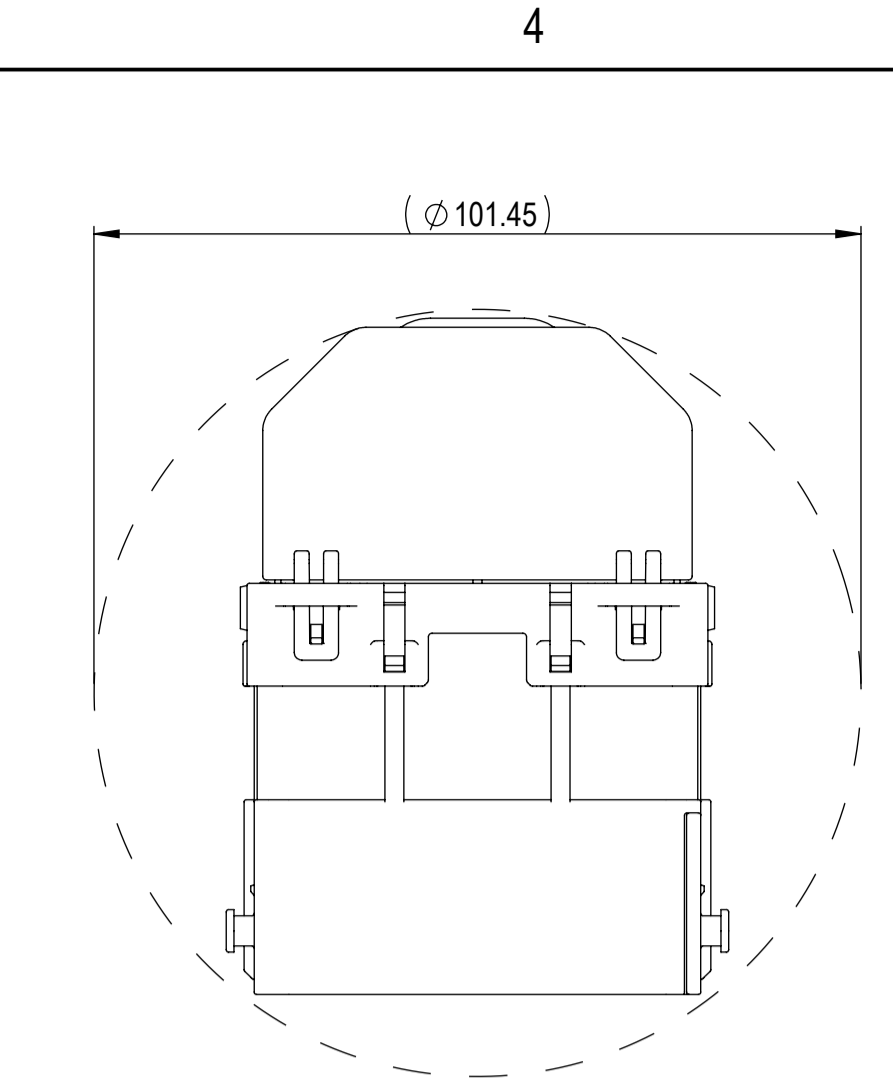
7288-8199-30, ETC.  
KEYWAY A



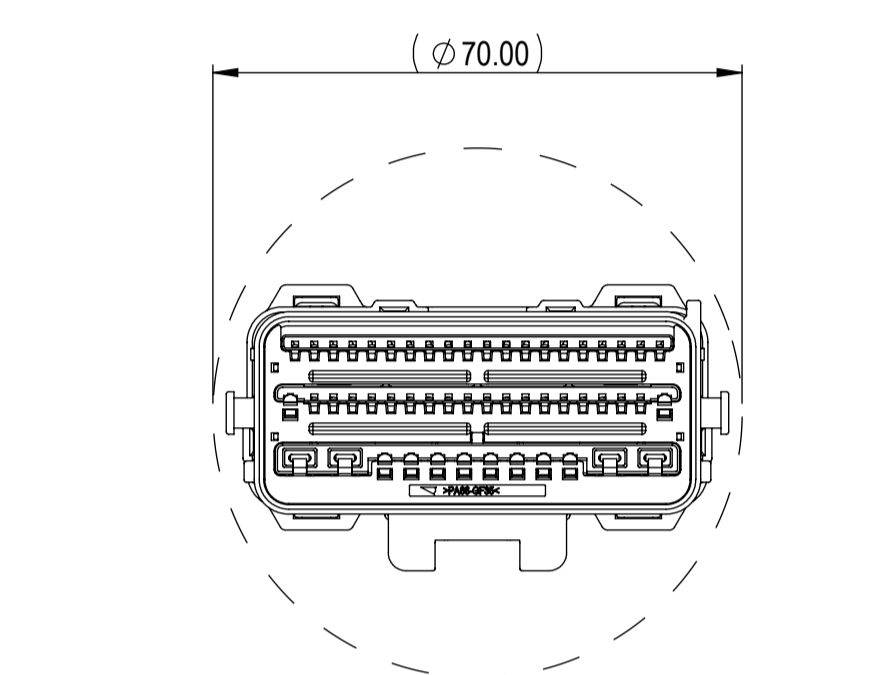
7288-9497-40, ETC.  
KEYWAY B



EXPLODED VIEW  
(1/1)

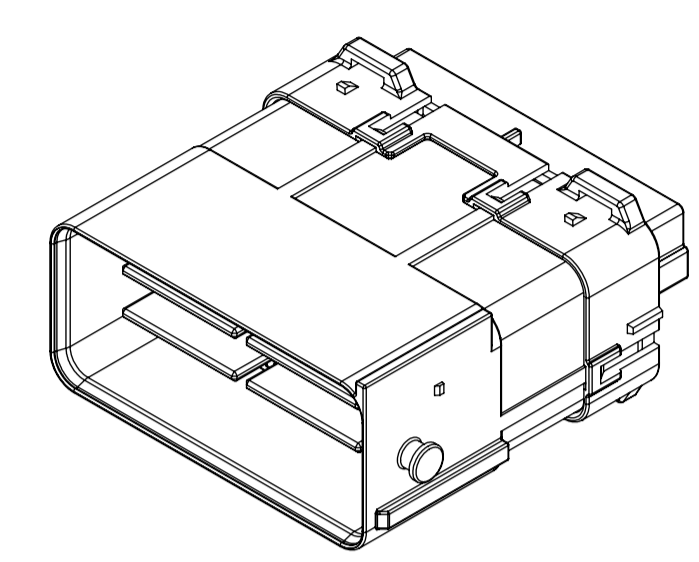


MINIMUM PASS-THROUGH HOLE DIMENSION  
WITH WIRE COVER 7174-1783-30  
(1/1)

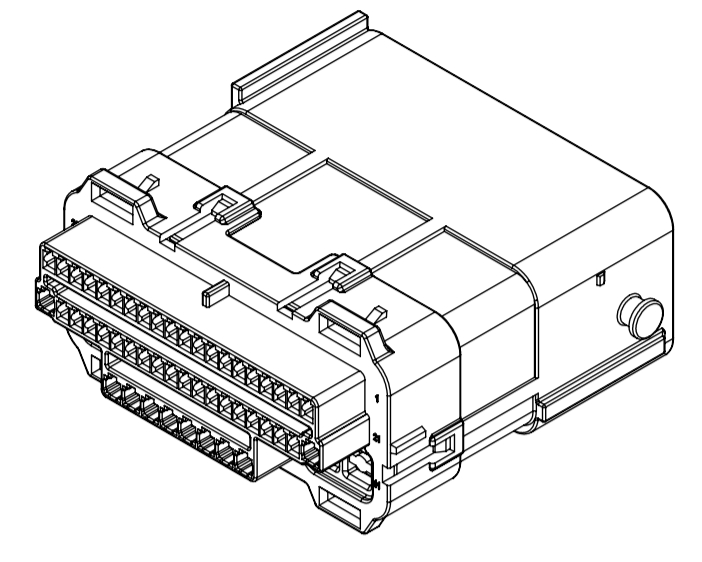


MINIMUM PASS-THROUGH HOLE DIMENSION  
(1/1)

SUB-ASSEMBLY PART NUMBER		NO.	PART NUMBER	PART NAME	MATERIAL	COLOR	QUANTITY
SEE FOLLOWING PAGES		①	7188-8198-30	52P (38xGEN-Y 0.64 + 10xYESCIII 1.5 + 4xAPEX 2.8) SEALED MALE HOUSING - A KEYWAY	PA66-GF35	BLACK	1
			7188-9497-40	52P (38xGEN-Y 0.64 + 10xYESCIII 1.5 + 4xAPEX 2.8) SEALED MALE HOUSING - B KEYWAY	PA66-GF35	LIGHT GRAY	1
		②	7172-1438	52P (38xGEN-Y 0.64 + 10xYESCIII 1.5 + 4xAPEX 2.8) SEALED MALE TPA	PA66-GF35	NATURAL	1
		③	7172-5587-60	52P (38xGEN-Y 0.64 + 10xYESCIII 1.5 + 4xAPEX 2.8) MALE CONNECTOR MAT SEAL	SILICONE	GREEN	1
		④	SEE TABLE 2	52P (38xGEN-Y 0.64 + 10xYESCIII 1.5 + 4xAPEX 2.8) SEALED MALE MAT SEAL COVER	PBT-GF15	BLACK	1

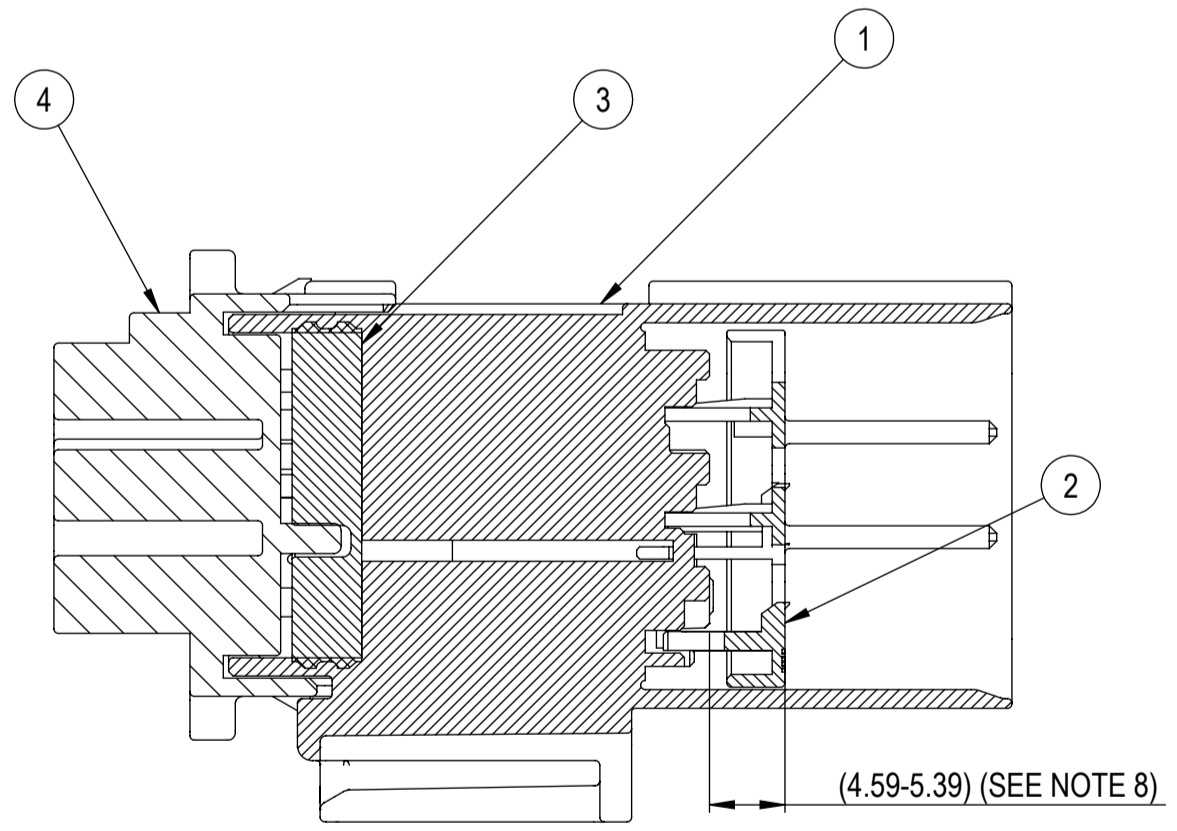
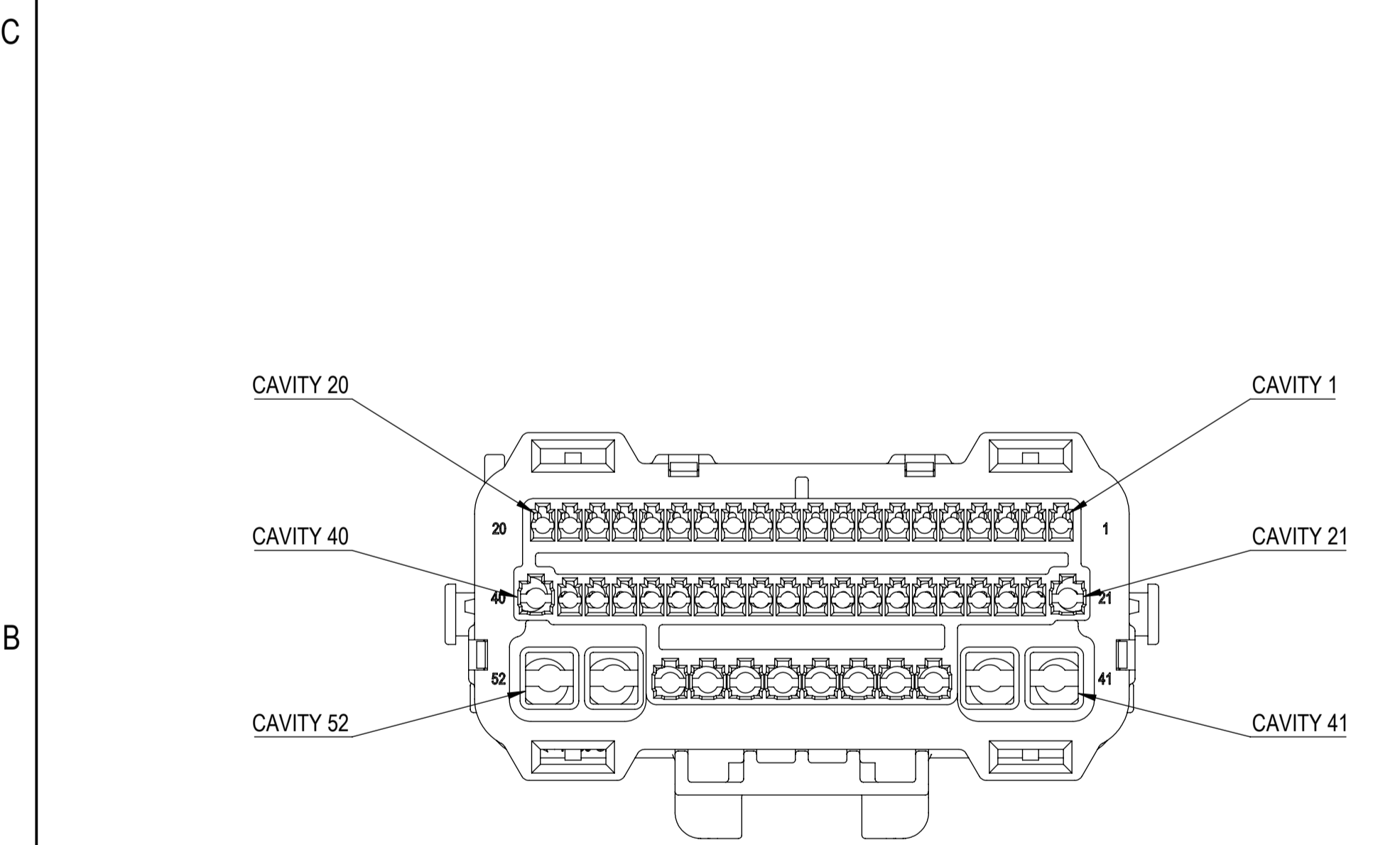


FRONT ISOMETRIC VIEW  
(1/1)

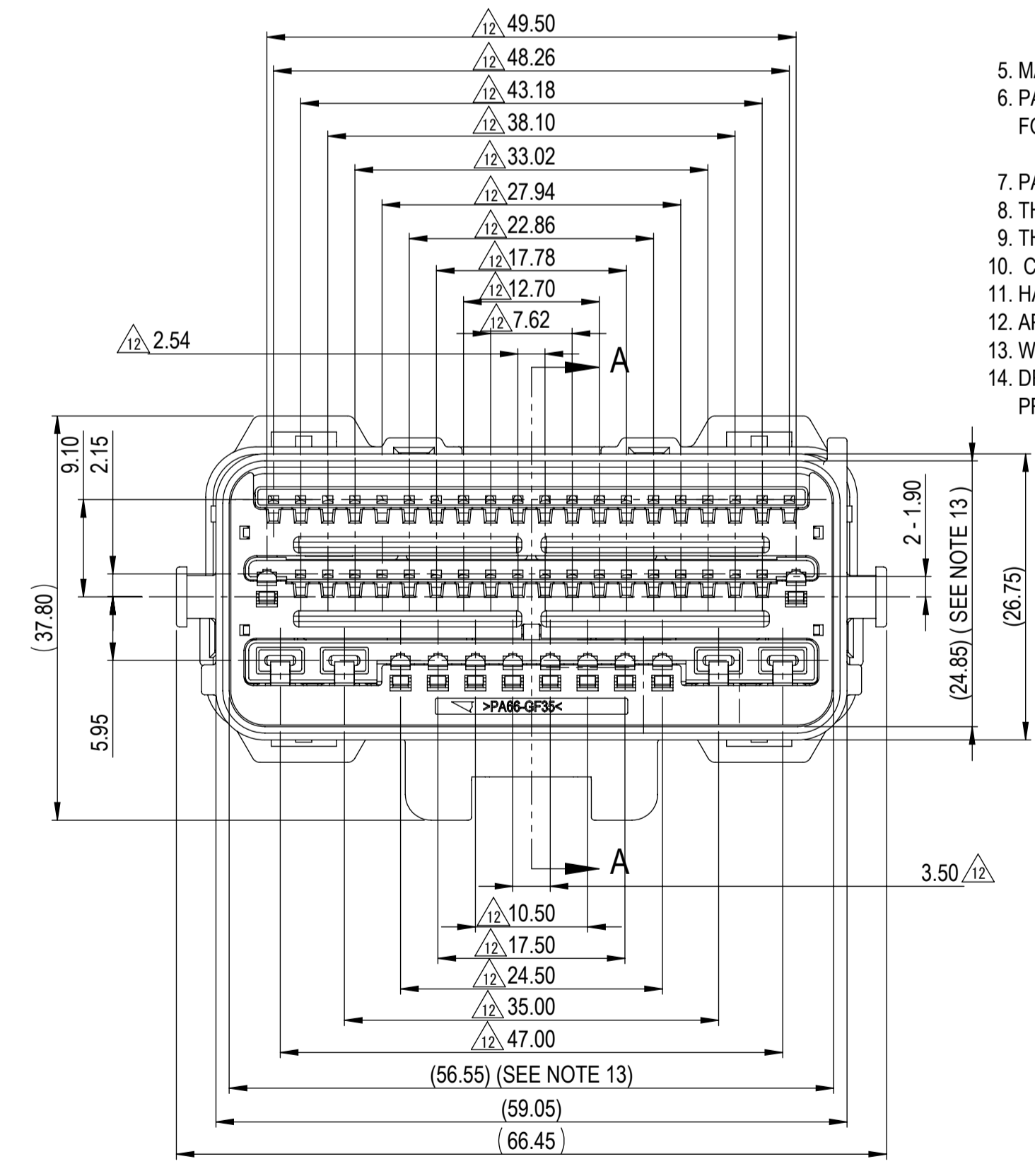


REAR ISOMETRIC VIEW  
(1/1)

- NOTES:
- PARTS MUST BE PURCHASED FROM YAZAKI.
  - PARTS MUST BE FREE OF FLASH AND IMPERFECTIONS THAT AFFECT FUNCTION.
  - APPLICABLE TERMINAL: SEE 7195-1965-02:R DRAWING (FLX GEN-Y 0.64mm) (PREFERRED) OR C-1924275 DRAWING (TYCO GEN Y 0.64mm)  
MAX WIRE OD: 1.90 (1-20, 22-39)  
MIN WIRE OD: 1.20 (1-20, 22-39)  
SEE 7114-6317-02:R DRAWING (YESC-III 1.5mm)  
MAX WIRE OD: 2.40 (21, 40, 43-50)  
MIN WIRE OD: 1.20 (21, 40, 43-50)  
10762775, ETC. (C15005-CUST DRAWING) (APEX 2.8mm)  
MAX WIRE OD: 3.80 (41-42, 51-52)  
MIN WIRE OD: 1.90 (41-42, 51-52)  
SEE S-100197 DRAWING (SEWS 2.8mm)  
MAX WIRE OD: 4.00 (41-42, 51-52)  
MIN WIRE OD: 1.00 (41-42, 51-52)
  - APPLICABLE CAVITY PLUGS: 7173-4533 YAZAKI (0.64 MALE MAT SEAL CAVITY PLUG)  
7173-4535 YAZAKI (1.5 MALE MAT SEAL CAVITY PLUG)  
54200005 APTIV (2.8 MAT SEAL CAVITY PLUG)



SECTION A-A



- MATING PART NUMBER: SEE TABLE 2
- PART SATISFIES USCAR-2, REVISION 6, FEBRUARY 2013, (T3/V2/S3/MF3) WITH THE FOLLOWING EXCEPTION:  
SECTION 5.4.5 TPA REMOVAL FROM HOUSING: 23.97N MIN
- PART TO COMPLY WITH YPES-31-038 REQUIREMENTS.
- THIS DIMENSION SHOWS THE PRE-SET POSITION OF THE TPA.
- THIS DRAWING IS TO BE USED FOR INTERNAL YAZAKI PSW SUBMISSION.
- CLIP SLOT: 23mm CLIP SLOT. (BASED ON USCAR 23mm CLIP SLOT, EWCAP-005-23, REV C)
- HANDLING MANUAL NUMBER: YPES-15-1716E
- APPLICABLE DRESS COVER PART NUMBER(S): 7174-1574-30, 7174-1783-30
- WARPAGE EXPECTED AND ACCEPTABLE IN THIS AREA. FIT AND FUNCTION SHALL NOT BE AFFECTED.
- DRAWING SHOWS MAT SEAL COVER IN THE AS-MOLDED (FULLY PLUGGED) CONDITION. PRIOR TO ASSEMBLY, CAVITIES ARE TO BE PUNCHED OUT PER TABLE 2.

DATE	REVISION RECORD	NO.	CHKD
09-03-2024	ADDED CONFIGURATIONS	C24-A515	FR
06-17-2024	ADDED CONFIGURATIONS	C24-A389	JM
03-04-2024	ADDED CONFIGURATIONS	C24-A158	FR
12-18-2023	ADDED CONFIGURATIONS	C23-A902	FR
09-19-2023	ADDED CONFIGURATIONS	C23-A691	FR
06-25-2023	ADDED CONFIGURATIONS	C23-A437	FR
04-03-2023	ADDED CONFIGURATIONS	C23-A205	FR
12-20-2022	ADDED CONFIGURATIONS AND REVISED CONFIGURATION	C22-A657	AP
09-29-2022	ADDED CONFIGURATIONS AND ADDED 2.8 MAT SEAL CAVITY PLUG	C22-A537	AP
06-21-2022	ADDED CONFIGURATIONS AND FLX GEN-Y 0.64mm TERMINAL	C22-A320	KM
03-15-2022	ADDED CONFIGURATIONS	C22-A145	IM
12-10-2021	ADDED CONFIGURATIONS	C21-A869	IM
09-21-2021	ADDED CONFIGURATIONS	C21-A715	IM
05-12-2021	ADDED CONFIGURATIONS	C21-A405	MS
03-18-2021	ADDED CONFIGURATIONS	C21-A247	IM
12-08-2020	ADDED CONFIGURATIONS	C20-A875	IM
06-20-2018	NEW	C18-A536	DZ

GENERAL TOLERANCE									
A	±0.15	±0.2	±0.3	±0.5	±0.75	±0.2	±0.3	±0.5	±2.5
B	±0.2	±0.3	±0.55	±0.95	±1.4				
C	±0.3	±0.5	±0.8	±1.4	±2				

CUSTOMER		CUSTOMER DWG. NO.		MTRL SPEC.		TREAT. & FIN.	
CUSTOMER PART NO.				SEE TABLE 2		N/A	
OFFICE YNA		TRIAL PART NO. X41588-AG48		NAME 52P (38xGEN-Y 0.64 + 10xYESCIII 1.5 + 4xAPEX 2.8)			
VENDOR		VENDOR NO.		SEAL MALE CONNECTOR SUB-ASSEMBLY			
DWG TYPE R		DWG SOURCE 7288-8199-30.M		DWG DATE 06-20-2018		PART NO. 7288-8199-30, ETC.	
APPROVED		CHECKED		CHECKED		DWG NO. 7288-8199-30:R	
DESIGN		DRAWN		JACKSON MATHESON 06-02-2016		FERNANDA RASCON 09-03-2024	
MASS (62.9g)				YAZAKI CORPORATION			

ISSUE MARK

TABLE 2 - CLOSED CAVITY CONFIGURATION

Table with columns: MALE SUB ASSEMBLY PART NO., KEYWAY, MAT SEAL COVER PART NO., MATING PART NUMBER, and a grid of CLOSED CAVITY NUMBERS (1-52). Rows are labeled E, D, C, B, A on the left and right sides.

ISSUE MARK

METADATA section including: CUSTOMER PART NO., CUSTOMER DWG NO., OFFICE (YNA), TRAIL PART NO. (X41588-AG48), DWG TYPE (R), DWG SOURCE, DWG DATE (06-20-2018), UNIT (mm), SCL (2/1), ANGLE (3), PART NO. (7288-8199-30, ETC.), DWG NO. (7288-8199-30:R), and YAZAKI CORPORATION logo.

GENERAL TOLERANCE table with columns: 10MAX, 50MAX, 100MAX, 250MAX, 250OVR, R5 MAX, R10 MAX, R20 MAX, R20 OVR, ANGLE, ECCENT. Values include ±0.15, ±0.2, ±0.3, ±0.5, ±0.75, ±1.4, ±2, ±0.1, ±0.3, ±0.5, ±2.5, ±3°.

TABLE 2 - CLOSED CAVITY CONFIGURATION

Main table with columns for MALE SUB ASSEMBLY PART NO., KEYWAY, MAT SEAL COVER PART NO., MATING PART NUMBER, and 52 CLOSED CAVITY NUMBERS (1-52). Rows include part numbers like 7297-1423-30, 7297-1630-30, etc.

E  
D  
C  
B  
A

E  
D  
C  
B  
A

ISSUE MARK

GENERAL TOLERANCE table with columns for 10MAX, 50MAX, 100MAX, 250MAX, 250OVR, R5 MAX, R10 MAX, R20 MAX, R20 OVR, ANGLE, ECCENT, and MASS (62.9g).

CUSTOMER/CUSTOMER PART NO. / OFFICE / VENDOR / VENDOR NO. / DWG TYPE / DWG SOURCE / DWG DATE / UNIT / SCL / ANGLE / PART NO. CH. CODE / DWG NO. / SET DWG NO. / YAZAKI CORPORATION

TABLE 2 - CLOSED CAVITY CONFIGURATION  
CLOSED CAVITY NUMBERS (\*X INDICATES A CAVITY WHICH WILL REMAIN PLUGGED - SEE NOTE 14)

Main data table with columns for MALE SUB ASSEMBLY PART NO., KEYWAY, MAT SEAL COVER PART NO., MATING PART NUMBER, and 52 numbered columns for cavity configurations. Includes rows E, D, C, B, and A.

ISSUE MARK

CUSTOMER: 7288-8199-30, ETC. MATERIAL SPEC: SEE TABLE 2. TREAT. & FIN.: N/A. NAME: 52P (38xGEN-Y 0.64 + 10xYESCIII 1.5 + 4xAPEX 2.8). SEaled MALE CONNECTOR SUB-ASSEMBLY. PART NO. 7288-8199-30-R. DWG NO. 7288-8199-30-R. YAZAKI CORPORATION.

GENERAL TOLERANCE table with columns for 10MAX, 50MAX, 100MAX, 250MAX, 250OVR, R5 MAX, R10 MAX, R20 MAX, R20 OVR, ANGLE, ECCENT, and MASS (62.9g).



TABLE 2 - CLOSED CAVITY CONFIGURATION. MALE SUB ASSEMBLY PART NO., KEYWAY, MAT SEAL COVER PART NO., MATING PART NUMBER, CLOSED CAVITY NUMBERS (1-52). X indicates a cavity which will remain plugged.

CUSTOMER: YNA, TRIAL PART NO. X41588-AG48, SEaled MALE CONNECTOR SUB-ASSEMBLY, YAZAKI CORPORATION

GENERAL TOLERANCE											
	10MAX	50MAX	100MAX	250MAX	250OVR	R5 MAX	R10 MAX	R20 MAX	R20 OVR	ANGLE	ECCENT
A	±0.15	±0.2	±0.3	±0.5	±0.75					±3°	0.1
B	±0.2	±0.3	±0.55	±0.95	±1.4	±0.2	±0.3	±0.5	±2.5	±3°	0.1
C	±0.3	±0.5	±0.8	±1.4	±2					±3°	0.15

FOR APPROVAL SIGNATURE: JACKSON MATHESON, FERNANDA RASCON



TABLE 2 - CLOSED CAVITY CONFIGURATION  
CLOSED CAVITY NUMBERS ("X" INDICATES A CAVITY WHICH WILL REMAIN PLUGGED - SEE NOTE 14)

Main data table with columns for MALE SUB ASSEMBLY PART NO., KEYWAY, MAT SEAL COVER PART NO., MATING PART NUMBER, and 52 numbered columns representing cavity numbers. Rows are labeled with letters A through E on the left and right sides.

ISSUE MARK

Technical specifications and metadata including: CUSTOMER PART NO., CUSTOMER DWG NO., OFFICE (YNA), TRIAL PART NO. (X41588-AG48), GENERAL TOLERANCE table, DWG TYPE (R), DWG SOURCE (7288-8199-30.M), DWG DATE (06-20-2018), UNIT (mm), SCL (3), PART NO. (7288-8199-30, ETC.), DWG NO. (7288-8199-30-R), and YAZAKI CORPORATION logo.



TABLE 2 - CLOSED CAVITY CONFIGURATION  
CLOSED CAVITY NUMBERS (\*X INDICATES A CAVITY WHICH WILL REMAIN PLUGGED - SEE NOTE 14)

Table with columns: MALE SUB ASSEMBLY PART NO., KEYWAY, MAT SEAL COVER PART NO., MATING PART NUMBER, and 52 numbered columns (1-52) representing cavity configurations. Rows include part numbers like 7297-8441-30, 7297-8442-30, etc.

Customer information: CUSTOMER PART NO., CUSTOMER DWG NO., OFFICE: YNA, TRIAL PART NO.: X41588-AG48. Name: 52P (38xGEN-Y 0.64 + 10xYESCIII 1.5 + 4xAPEX 2.8). Vendor: SEAILED MALE CONNECTOR SUB-ASSEMBLY. Part No: 7288-8199-30, ETC. DWG No: 7288-8199-30-R. YAZAKI CORPORATION.

GENERAL TOLERANCE table with columns: 10MAX, 50MAX, 100MAX, 250MAX, 250OVR, R5 MAX, R10 MAX, R20 MAX, R20 OVR, ANGLE, ECCENT. Values: A ±0.15, ±0.2, ±0.3, ±0.5, ±0.75; B ±0.2, ±0.3, ±0.55, ±0.95, ±1.4; C ±0.3, ±0.5, ±0.8, ±1.4, ±2.

TABLE 2 - CLOSED CAVITY CONFIGURATION  
CLOSED CAVITY NUMBERS (\*X INDICATES A CAVITY WHICH WILL REMAIN PLUGGED - SEE NOTE 14)

Main data table with columns for MALE SUB ASSEMBLY PART NO., KEYWAY, MAT SEAL COVER PART NO., MATING PART NUMBER, and 52 numbered columns for cavity configurations (1-52). Rows include part numbers like 7297-0093-30, 7297-0094-30, etc.

A

A

CUSTOMER: YNA, DWG NO. 7288-8199-30, ETC. NAME: 52P (38xGEN-Y 0.64 + 10xYESCIII 1.5 + 4xAPEX 2.8). SEALER: SEATED MALE CONNECTOR SUB-ASSEMBLY. YAZAKI CORPORATION.

GENERAL TOLERANCE table with columns for 10MAX, 50MAX, 100MAX, 250MAX, 250OVR, R5 MAX, R10 MAX, R20 MAX, R20 OVR, ANGLE, ECCENT, and MASS (62.9g).

MALE SUB ASSEMBLY PART NO.				CLOSED CAVITY NUMBERS (*X INDICATES A CAVITY WHICH WILL REMAIN PLUGGED - SEE NOTE 14)																																																			
KEYWAY	MAT SEAL COVER PART NO.	MATING PART NUMBER	1	2	3	4	5	6	7	8	9	10	11	12	13	14	15	16	17	18	19	20	21	22	23	24	25	26	27	28	29	30	31	32	33	34	35	36	37	38	39	40	41	42	43	44	45	46	47	48	49	50	51	52	
7277-1169-30	A	7173-7925-30	7278-1140-30						X								X					X	X	X													X	X													X	X			
7277-1170-30	A	7173-7926-30	7278-1141-30	X	X	X	X	X	X	X	X	X	X	X	X	X	X	X	X	X	X	X	X	X	X	X	X	X	X	X	X	X	X	X	X	X	X	X	X	X	X	X	X	X	X	X	X	X	X	X	X	X	X	X	X
7277-1171-30	A	7173-7927-30	7278-1142-30						X	X	X	X			X	X	X	X	X	X	X	X	X	X	X	X	X	X	X	X	X	X	X	X	X	X	X	X	X	X	X	X	X	X	X	X	X	X	X	X	X	X	X	X	
7277-1172-30	A	7173-7928-30	7278-1143-30	X	X	X	X	X	X	X	X	X	X	X	X	X	X	X	X	X	X	X	X	X	X	X	X	X	X	X	X	X	X	X	X	X	X	X	X	X	X	X	X	X	X	X	X	X	X	X	X	X	X	X	



GENERAL TOLERANCE											
	10MAX	50MAX	100MAX	250MAX	250OVR	R5 MAX	R10 MAX	R20 MAX	R20 OVR	ANGLE	ECCENT
A	±0.15	±0.2	±0.3	±0.5	±0.75					±3°	0.1
B	±0.2	±0.3	±0.55	±0.95	±1.4					±3°	0.1
Ⓒ	±0.3	±0.5	±0.8	±1.4	±2					±3°	0.15
SPECIFIED									MASS	(62.9g)	

CUSTOMER CUSTOMER PART NO.	CUSTOMER DWG NO.	MATL SPEC.	SEE TABLE 2	TREAT. & FIN.	N/A
OFFICE YNA	TRIAL PART NO.	NAME 52P (38xGEN-Y 0.64 + 10xYESCIII 1.5 + 4xAPEX 2.8)			
VENDOR	X41588-AG48	SEALED MALE CONNECTOR SUB-ASSEMBLY			
VENDOR NO.		DWG TYPE R	DWG SOURCE 7288-8199-30.M	DWG DATE 06-20-2018	UNIT mm
		SCL 2/1	ANGLE 3	PART NO. 7288-8199-30, ETC.	TREAT. & FIN. N/A
		DESIGN JACKSON	DRAWN MATHESON	DWG NO. 7288-8199-30:R	SET DWG NO. (1/12)
FOR APPROVAL SIGNATURE SEE PAGE 1			DATE 06-02-2016	YAZAKI CORPORATION	

ISSUE MARK

E  
D  
C  
B  
A

E  
D  
C  
B  
A



# Mouser Electronics

Authorized Distributor

Click to View Pricing, Inventory, Delivery & Lifecycle Information:

[Yazaki:](#)

[7297290830](#) [7297573430](#) [7297290730](#) [7297288430](#) [7297167430](#) [7297110430](#) [7297224330](#) [7297226430](#)  
[7297451130](#) [7297290630](#)