

TABLE 1 - SUB-COMPONENT DETAIL

NO.	PART NUMBER	PART NAME	MATERIAL	COLOR
①	7187-9192-30	8P 0.64mm GEN-Y SEALED FEMALE CONNECTOR HOUSING KEYWAY A	PA66-GF35	BLACK
	7189-0562-40	8P 0.64mm GEN-Y SEALED FEMALE CONNECTOR HOUSING KEYWAY B	PA66-GF35	LIGHT GRAY
	TBD	8P 0.64mm GEN-Y SEALED FEMALE CONNECTOR HOUSING KEYWAY C	PA66-GF35	BROWN
	TBD	8P 0.64mm GEN-Y SEALED FEMALE CONNECTOR HOUSING KEYWAY D	PA66-GF35	GREEN
②	SEE TABLE 2	8P 0.64mm GEN-Y SEALED FEMALE CONNECTOR MALE SEAL COVER	PBT-GF15	BLACK
③	7172-0717	8P 0.64mm GEN-Y SEALED FEMALE CONNECTOR TPA	PA66-GF35	NATURAL
④	7137-2446-50	8P 0.64mm GEN-Y SEALED FEMALE CONNECTOR INTERFACE SEAL	SILICONE	RED
⑤	7172-5171-90	8P 0.64mm GEN-Y SEALED FEMALE CONNECTOR MAT SEAL	SILICONE	LIGHT BLUE
⑥	7172-0156-50	CPA FOR SEALED CONNECTOR	PBT-GF15	RED

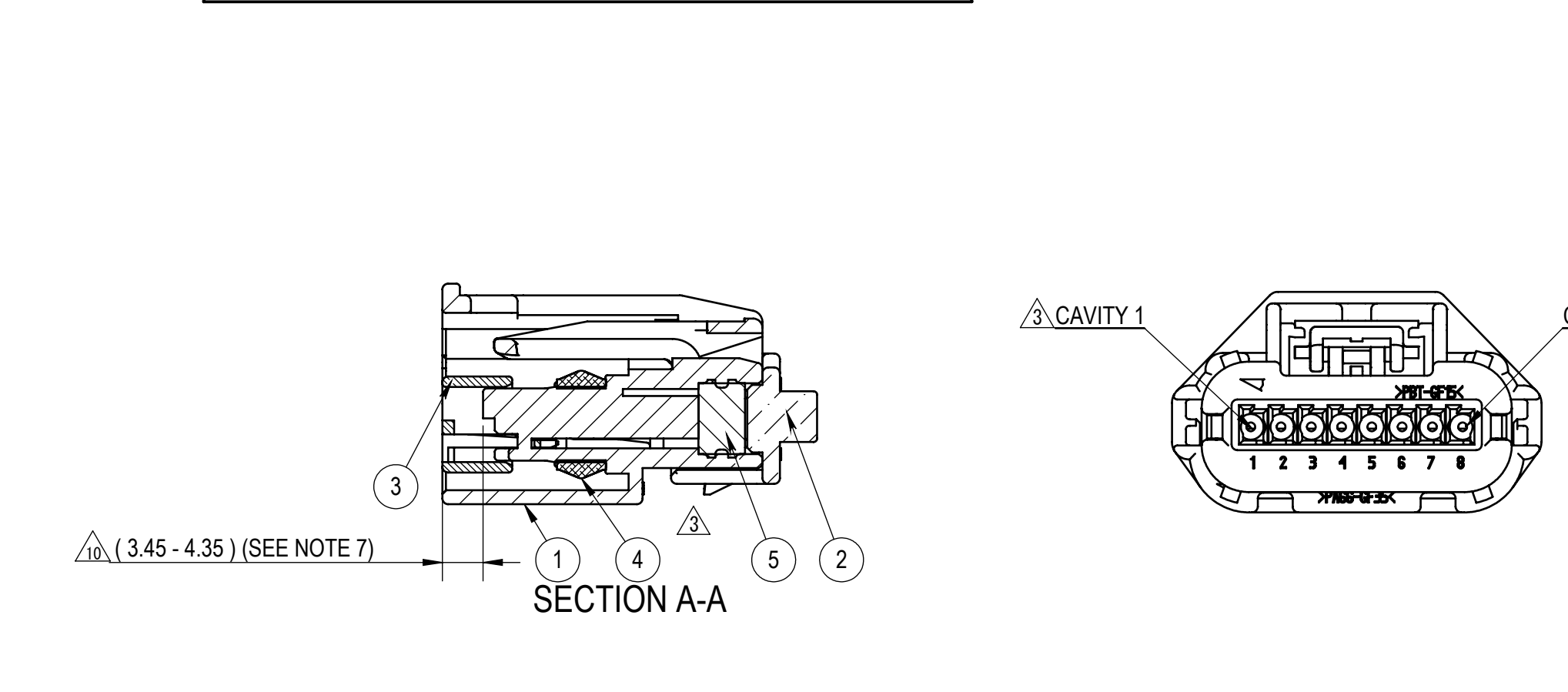
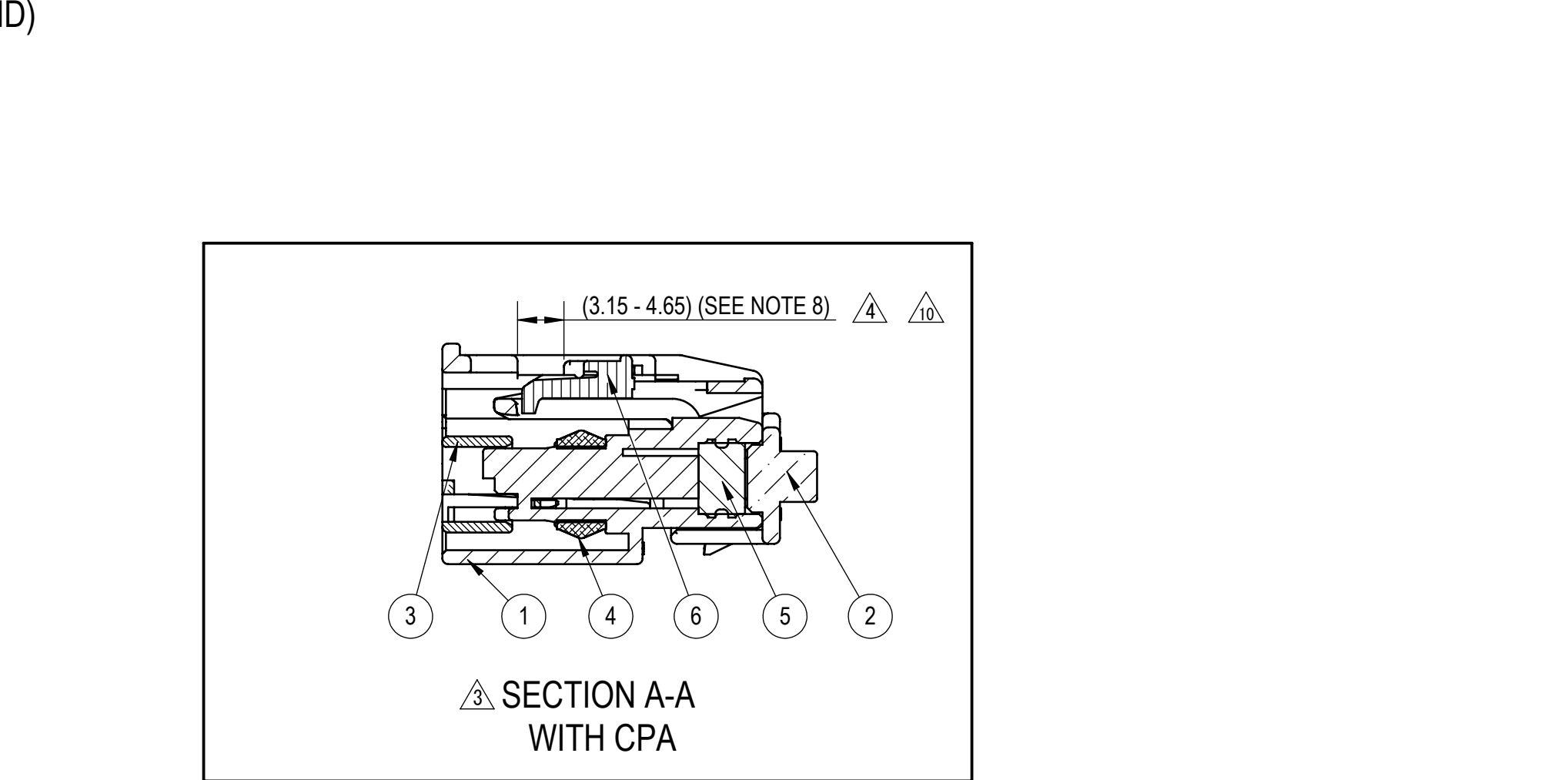
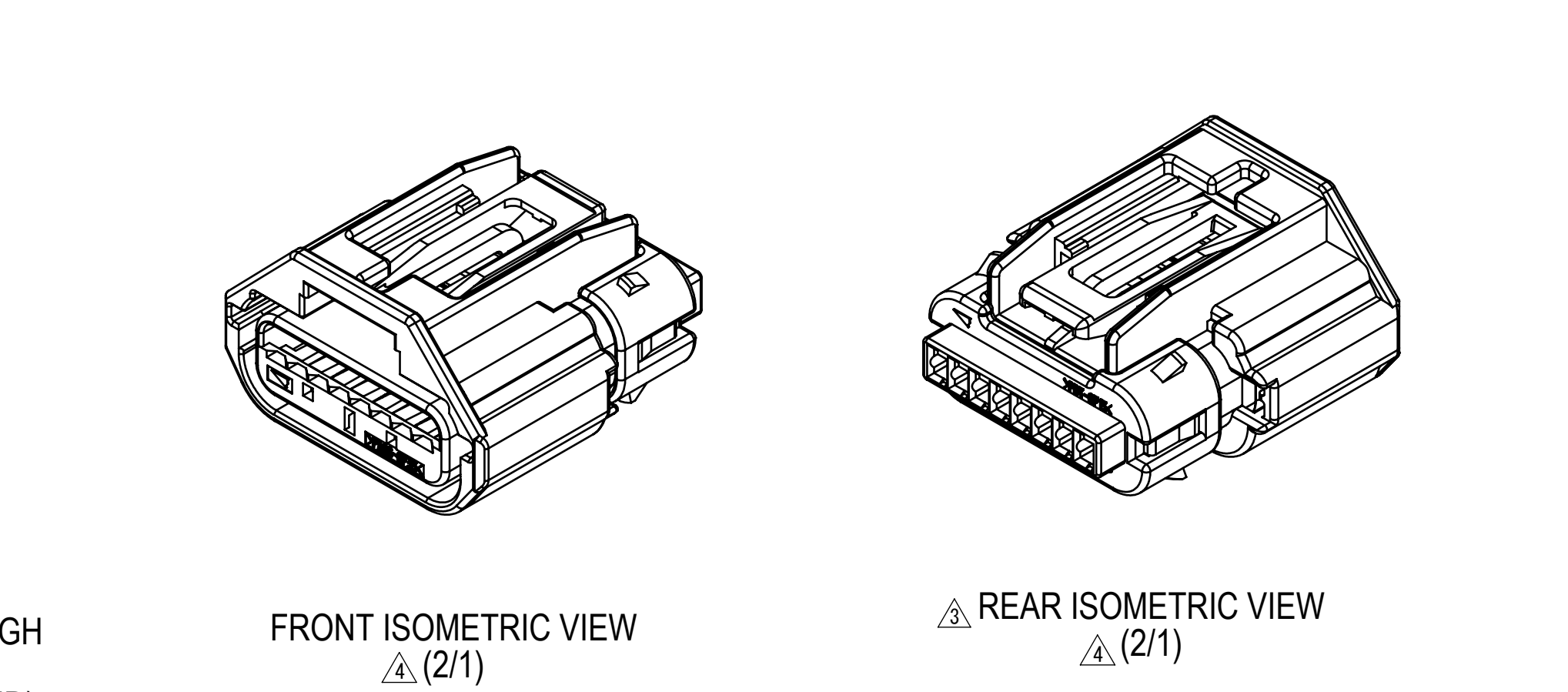


TABLE 2

SUB-ASSEMBLY PART NUMBER	KEYWAY	APPLICABLE SUB-COMPONENTS						BLOCKED CAVITY DETAIL (X = BLOCKED CAVITY)								MASS (g)			
		①	②	③	④	⑤	⑥	1	2	3	4	5	6	7	8				
7287-9194-30	A	7187-9192-30	7172-0719-30	✓	✓	✓													
7287-9192-30	A	7187-9192-30	7172-0718-30	✓	✓	✓				X	X								
7289-0562-40	B	7189-0562-40	7172-0718-30	✓	✓	✓				X	X								
7289-2599-40	B	7189-0562-40	7172-0719-30	✓	✓	✓													
7289-2623-30	A	7187-9192-30	7172-0926-30	✓	✓	✓				X	X		X						
7289-2622-30	A	7187-9192-30	7172-0925-30	✓	✓	✓				X	X		X	X					
7289-2849-30	A	7187-9192-30	7172-0934-30	✓	✓	✓				X	X		X						
7289-3503-40	B	7189-0562-40	7172-0925-30	✓	✓	✓				X	X		X	X					
7289-3504-40	B	7189-0562-40	7172-0926-30	✓	✓	✓				X	X		X						
7289-9622-40	B	7189-0562-40	7172-0934-30	✓	✓	✓				X	X		X						
7289-6319-30	A	7187-9192-30	7172-1265-30	✓	✓	✓					X	X		X				X	
7289-6553-30	A	7187-9192-30	7172-1296-30	✓	✓	✓								X	X				
7289-7278-30	A	7187-9192-30	7172-1349-30	✓	✓	✓							X	X	X				
7289-7287-30	A	7187-9192-30	7172-1353-30	✓	✓	✓							X	X	X				
7289-8843-30	A	7187-9192-30	7172-1483-30	✓	✓	✓												X	X
7298-2514-30	A	7187-9192-30	7172-1661-30	✓	✓	✓													
7298-2515-30	A	7187-9192-30	7172-1662-30	✓	✓	✓				X			X		X				
7298-2516-30	A	7187-9192-30	7172-1663-30	✓	✓	✓								X					
7298-2517-30	A	7187-9192-30	7172-1664-30	✓	✓	✓							X	X					X
7298-2734-30	A	7187-9192-30	7172-1671-30	✓	✓	✓				X			X	X	X				
7298-2735-30	A	7187-9192-30	7172-1672-30	✓	✓	✓							X	X	X				X
7298-3200-30	A	7187-9192-30	7172-1716-30	✓	✓	✓				X	X							X	X
7298-3201-30	A	7187-9192-30	7172-1717-30	✓	✓	✓							X	X	X			X	X
7298-8506-30	A	7187-9192-30	7172-2020-30	✓	✓	✓									X				X
7298-8505-30	A	7187-9192-30	7172-2021-30	✓	✓	✓									X				X
7298-8501-30	A	7187-9192-30	7172-2022-30	✓	✓	✓				X			X						
7298-8500-30	A	7187-9192-30	7172-2023-30	✓	✓	✓				X									
7298-3367-30	A	7187-9192-30	7172-1731-30	✓	✓	✓	✓			X	X							X	X
7298-3368-30	A	7187-9192-30	7172-1732-30	✓	✓	✓	✓				X							X	X
7298-4358-30	A	7187-9192-30	7172-1786-30	✓	✓	✓	✓			X	X							X	
7298-4359-30	A	7187-9192-30	7172-1788-30	✓	✓	✓	✓				X							X	
7298-5221-30	A	7187-9192-30	7172-0719-30	✓	✓	✓	✓												
7298-5222-30	A	7187-9192-30	7172-0925-30	✓	✓	✓	✓	✓		X	X	X	X						
7298-5223-30	A	7187-9192-30	7172-0926-30	✓	✓	✓	✓	✓		X	X		X						
7298-5220-40	B	7189-0562-40	7172-0719-30	✓	✓	✓	✓												
7298-5224-40	B	7189-0562-40	7172-0925-30	✓	✓	✓	✓	✓		X	X	X	X						
7298-5225-40	B	7189-0562-40	7172-0926-30	✓	✓	✓	✓	✓		X	X		X						

- NOTES:
- PARTS MUST BE PURCHASED FROM YAZAKI.
  - PARTS MUST BE FREE OF FLASH AND IMPERFECTIONS THAT AFFECT FUNCTION.
  - APPLICABLE TERMINAL: SEE 7196-0191-02:R DRAWING (YAZAKI 0.64 FLX TAB DOWN SEALED)  
MAX WIRE OD: 1.90 mm  
MIN WIRE OD: 1.20 mm  
SEE C-2098753 DRAWING (TYCO GEN-Y 0.64 SEALED OR EQUIVALENT)  
MAX WIRE OD: 2.08mm  
MIN WIRE OD: 1.20mm
  - PART DESIGNED TO MEET USCAR INTERFACE: 064-S-008-1-Z02, REV B
  - PART SATISFIES USCAR-2 REV 5, NOV 2007 (T3/V2/S2/MF2)
  - PART TO COMPLY WITH YPES-31-038 REQUIREMENTS.
  - THIS DIMENSION SHOWS THE PRE-SET POSITION OF THE TPA.
  - THIS DIMENSION SHOWS THE PRE-SET POSITION OF THE CPA.
  - THIS DRAWING IS TO BE USED FOR INTERNAL YAZAKI PSW SUBMISSION.
  - HANDLING MANUAL NUMBER: YPES-15-1383E
  - APPLICABLE WIRE COVER: 7174-1555-30
  - APPLICABLE MAT SEAL CAVITY PLUG: 7173-4532-40

REV	DATE	REVISION RECORD	NO.	CHKD
⑩	10-26-2022	ADD PART NUMBER, REVISED TPA AND CPA RANGE AND ADDED OPTIONAL TERMINAL.	C22-A573	I.B
⑨	10-25-2021	ADDED CONFIGURATIONS & ADDED NOTES	C21-A769	F.R.
⑧	11-25-2019	ADDED CONFIGURATIONS	C19-AA12	I.M.
⑦	06-27-2019	ADDED CONFIGURATIONS	C19-A596	J.G.
⑥	05-14-2019	ADDED CONFIGURATIONS & COLUMN	C19-A446	I.M.
⑤	11-02-2018	ADDED CONFIGURATIONS	C18-AA69	D.M.
④	07-30-2018	UPDATED FORMAT AND ADDED CONFIGURATIONS	C18-A691	D.M.
③	01-23-2017	UPDATED FORMAT AND ADDED CONFIGURATIONS	C17-A075	D.Z.
②	01-08-2015	REVISED TOLERANCES	C15-A009	H.C.
①	09-17-2013	ADDED PART NUMBERS	C13-A540	B.O.
	05-02-2013	NEW	C13-A132	H.C.
LET	DATE	REVISION RECORD	NO.	CHKD

GENERAL TOLERANCE

	10MAX	50MAX	100MAX	250MAX	250OVR	R5 MAX	R10 MAX	R20 MAX	R20 OVR	ANGLE	ECCENT
A	±0.15	±0.20	±0.30	±0.50	±0.75					±3°	0.1
B	±0.20	±0.30	±0.55	±0.95	±1.40	±0.20	±0.30	±0.50	±2.50	±3°	0.1
C	±0.30	±0.50	±0.80	±1.40	±2.00					±3°	0.15

MASS SEE TABLE 2

CUSTOMER		MATERIAL SPEC.		TREAT. & FIN.	
CUSTOMER PART NO.	CUSTOMER DWG NO.	SEE TABLE 1		N/A	
OFFICE YNA	TRIAL PART NO.	NAME 8P 0.64 mm GEN-Y SEALED			
VENDOR	N/A	FEMALE CONNECTOR SUB-ASSEMBLY			
VENDOR NO.		PART NO.	7287-9194-30, ETC.		
		CH. CODE			
		DWG NO.	7287-9194-30:R		
		YAZAKI CORPORATION			
		DESIGN	MICHAEL OSTERHART		
		DRAWN	ISABEL BACA		
		DATE	04-19-2012 10-31-2022		

# Mouser Electronics

Authorized Distributor

Click to View Pricing, Inventory, Delivery & Lifecycle Information:

[Yazaki:](#)

[7287919230](#) [7289056240](#) [7287919430](#) [7289262230](#) [7289262330](#) [7289259940](#) [7289284930](#) [7298336730](#)  
[7298251430](#) [7298273530](#) [7298522040](#) [7298435930](#) [7298273430](#) [7298251630](#) [7298336830](#) [7298522130](#)  
[7298850030](#) [7298522230](#)