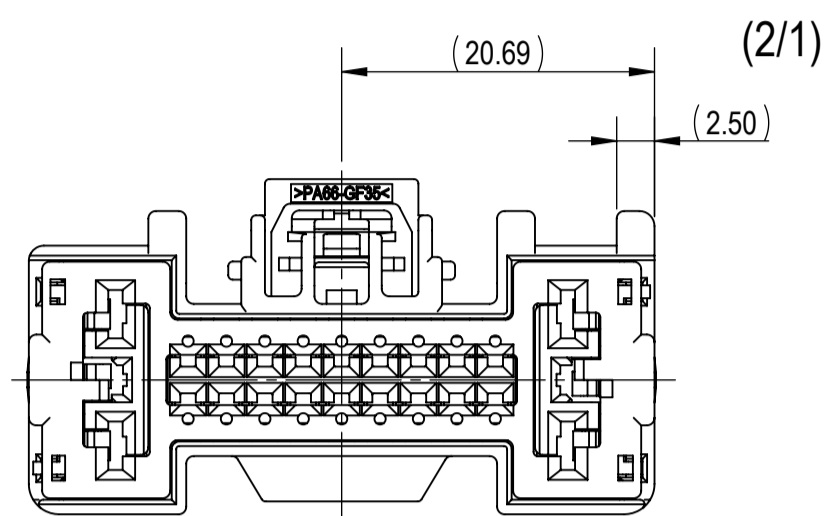
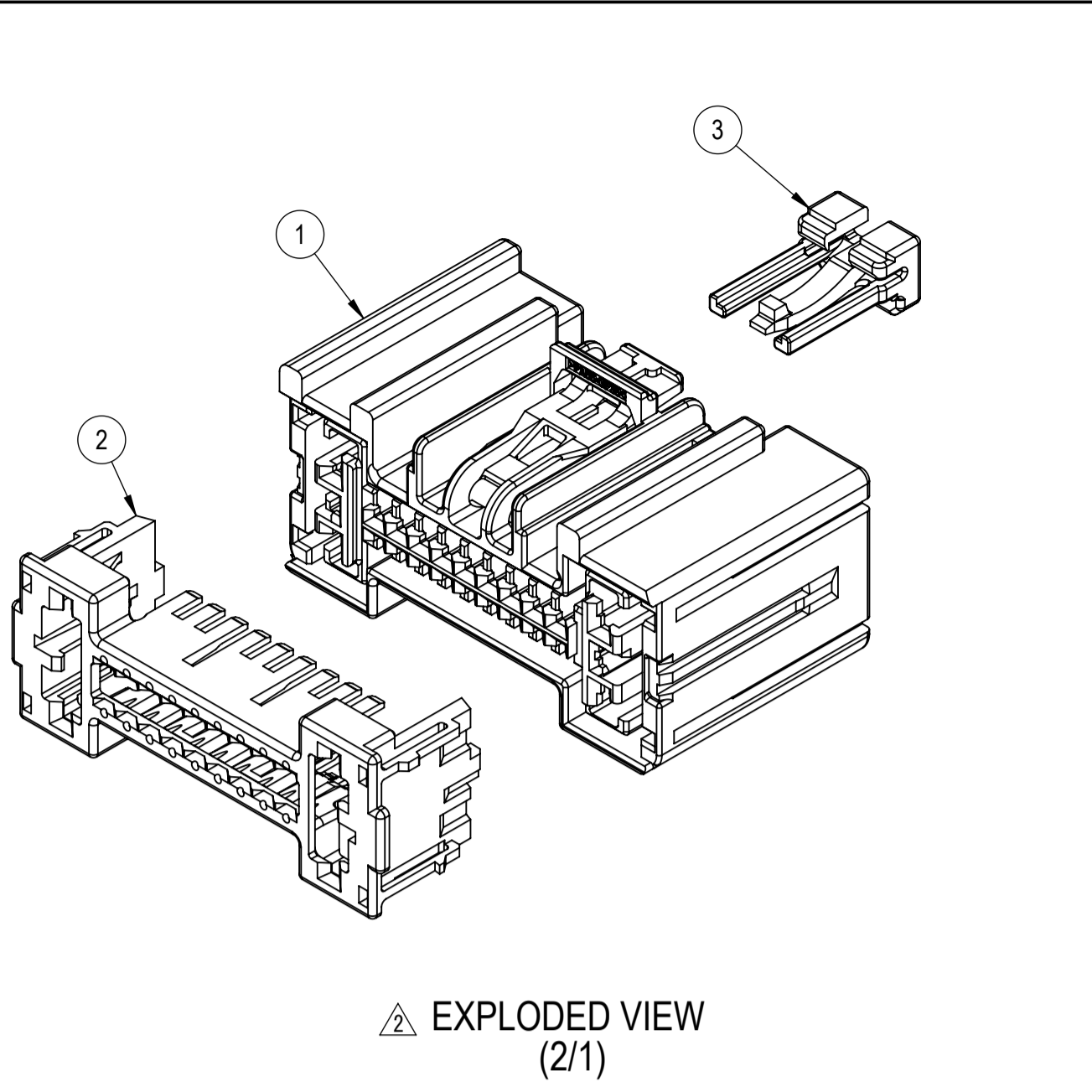


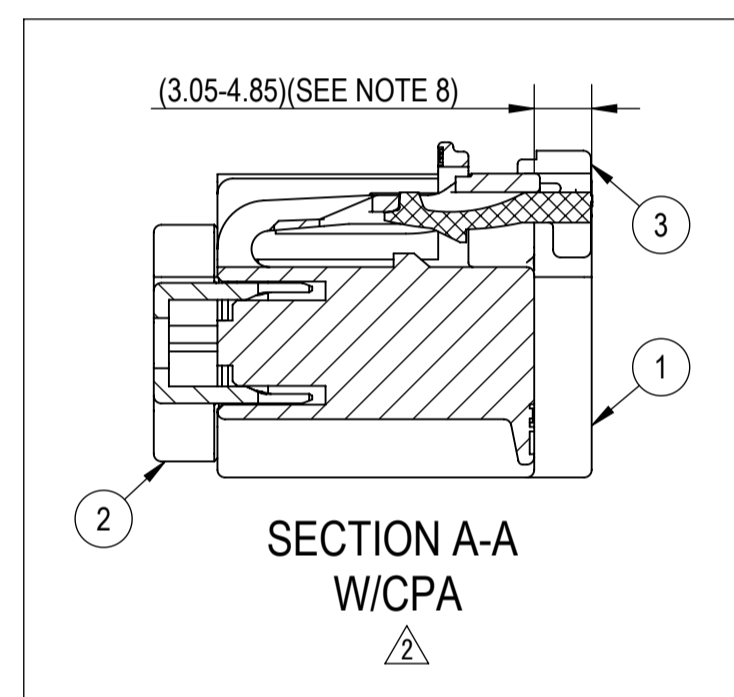
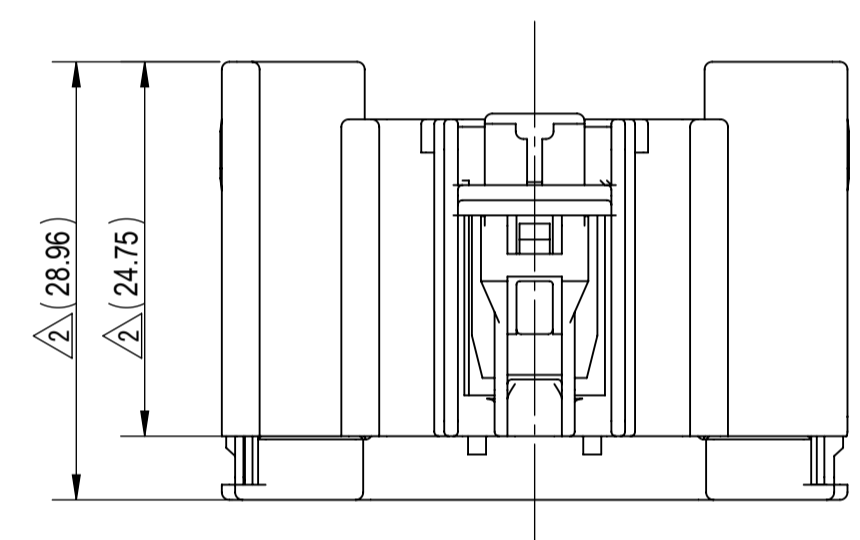
7287-3260-30, ETC.
KEYWAY A



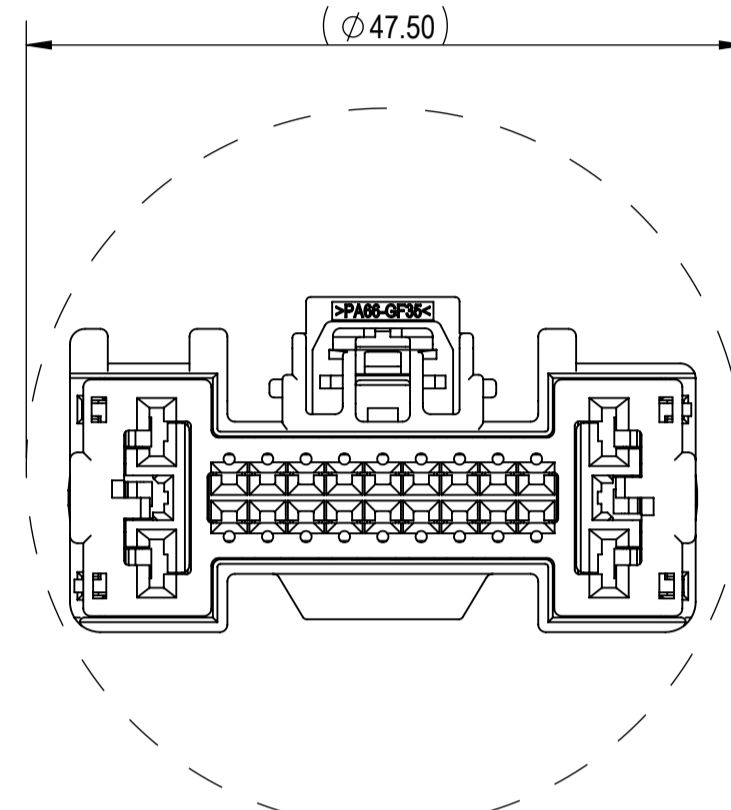
7298-3373-40, ETC.
KEYWAY B



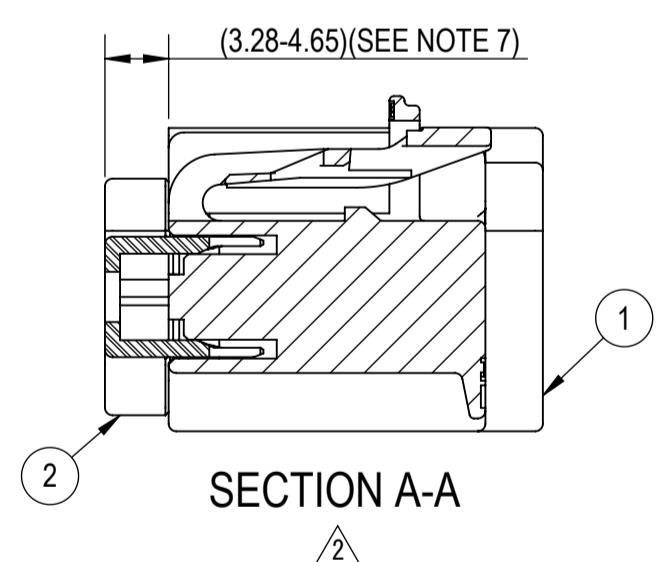
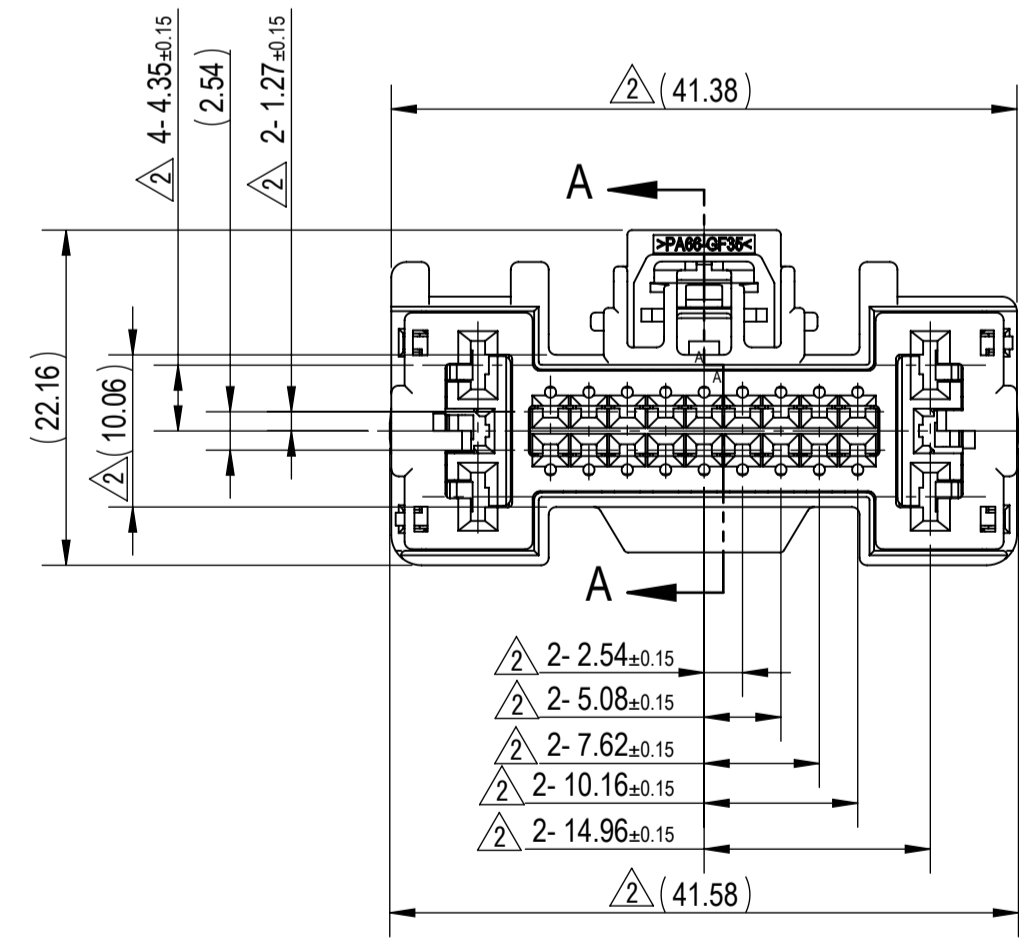
EXPLODED VIEW
(2/1)



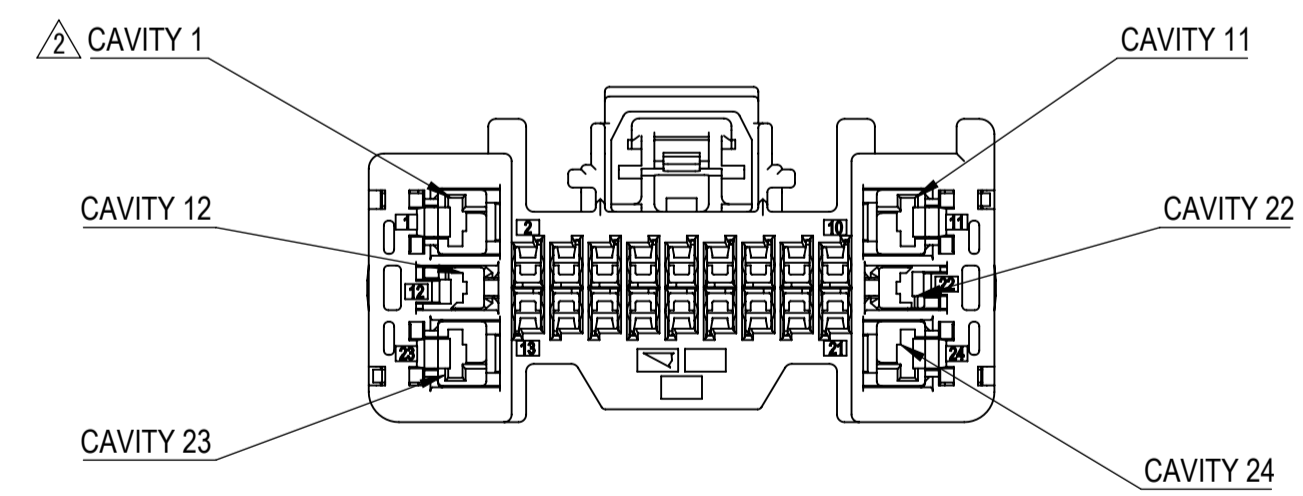
SECTION A-A
W/CPA



RECOMMENDED PASS-THROUGH
HOLE DIMENSION
(1mm CLEARANCE ALL AROUND)
(2/1)

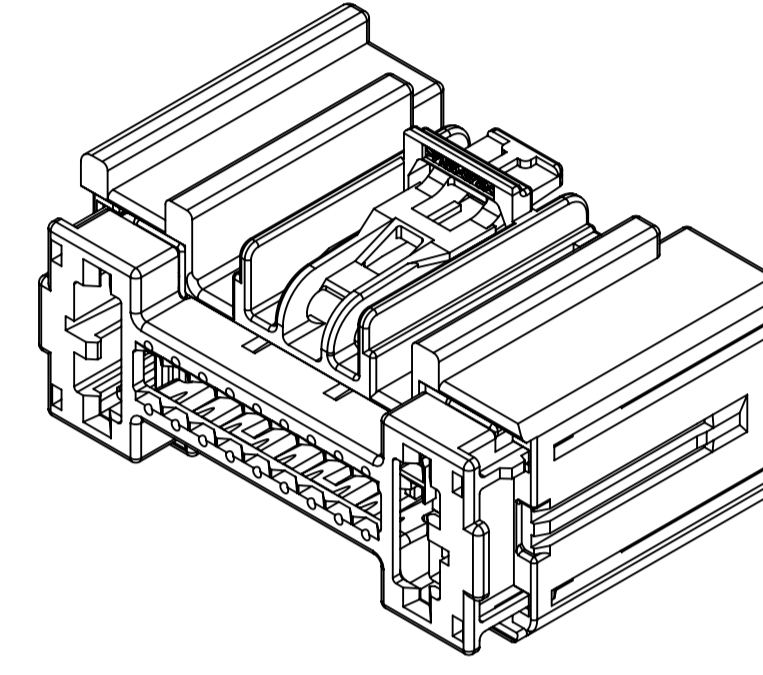


SECTION A-A

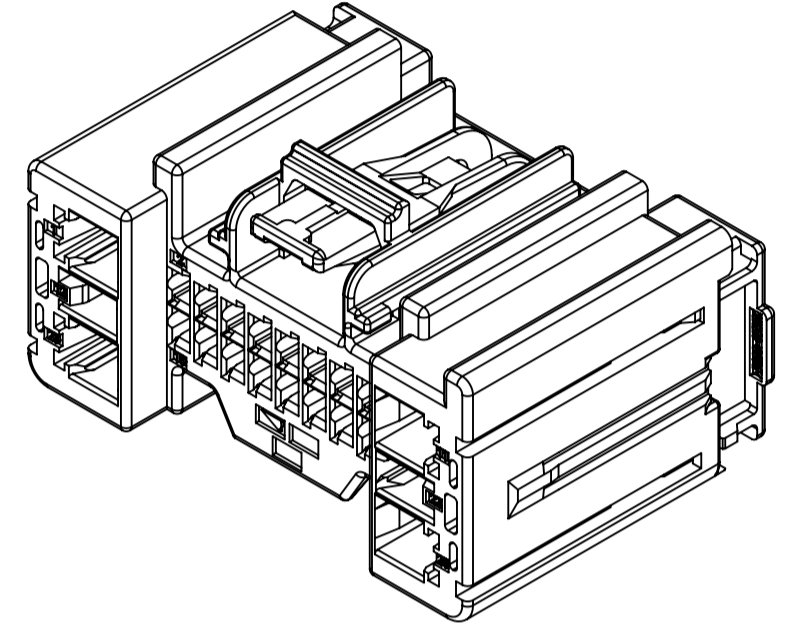


SUB-ASSEMBLY PART NUMBER	NO.	PART NUMBER	PART NAME	MATERIAL	COLOR	QUANTITY
SEE TABLE 2	①	SEE TABLE 2	24P (18P GEN Y 0.64 + 2P YESC 1.5 + 4P YESC 2.8) UNSEALED FEMALE CONNECTOR HOUSING	PA66-GF35	SEE TABLE 2	1
	②	7172-0335	24P (18P GEN Y 0.64 + 2P YESC 1.5 + 4P YESC 2.8) UNSEALED FEMALE CONNECTOR TPA	PA66-GF35	NATURAL	1
SEE TABLE 2	①	SEE TABLE 2	24P (18P GEN Y 0.64 + 2P YESC 1.5 + 4P YESC 2.8) UNSEALED FEMALE CONNECTOR HOUSING	PA66-GF35	SEE TABLE 2	1
	②	7172-0335	24P (18P GEN Y 0.64 + 2P YESC 1.5 + 4P YESC 2.8) UNSEALED FEMALE CONNECTOR TPA	PA66-GF35	NATURAL	1
	③	7172-1081-50	0.64 KAIZEN UNSEALED CONNECTOR CPA	PA66-GF35	RED	1

SUB-ASSEMBLY PART NUMBER	HOUSING PART NUMBER	KEYWAY	CPA	COLOR	MASS (g)	INLINE MATING PART NUMBER	PANEL MATING PART NUMBER
7287-3260-30	7187-3260-30	A	NO	BLACK	(13.30)	7286-6779-30	7286-3260-30 7297-3661-30
7289-5475-30	7187-3260-30	A	YES	BLACK	(13.61)	7286-6779-30	7286-3260-30 7297-3661-30
7298-3373-40	7198-3373-40	B	NO	LIGHT GRAY	(13.30)	7297-3374-40	7297-3661-30
7298-3715-40	7198-3373-40	B	YES	LIGHT GRAY	(13.61)	7197-3374-40	7297-3661-30
7287-3260-60	7187-3260-60	A	NO	GREEN	(13.30)	7286-6779-60	7297-3661-30
7289-5475-60	7187-3260-60	A	YES	GREEN	(13.61)	7286-6779-60	7297-3661-30



FRONT ISOMETRIC VIEW
(2/1)



REAR ISOMETRIC VIEW
(2/1)

NOTES:

- PARTS MUST BE PURCHASED FROM YAZAKI.
- PARTS MUST BE FREE OF FLASH AND IMPERFECTIONS THAT AFFECT FUNCTION.
- APPLICABLE TERMINAL: SEE 7196-0187-02:R DRAWING (0.64 FLX TAB UP UNSEALED)(CAVITIES 2-10, 13-21)
MAX WIRE OD: 1.90mm
SEE 7116-4100-02:R DRAWING (1.5 YESC UNSEALED)(CAVITIES 12, 22)
MAX WIRE OD: 2.70mm
SEE 7116-4780-02:R DRAWING (1.5 YESC KAIZEN UNSEALED)(CAVITIES 12, 22)(RECOMMENDED)
MAX WIRE OD: 2.40mm
SEE 7116-4110-02:R DRAWING (2.8 YESC UNSEALED)(CAVITIES 1, 11, 23, 24)
MAX WIRE OD: 4.10mm
SEE 7116-4270-02:R DRAWING (2.8 YESC KAIZEN UNSEALED)(CAVITIES 1, 11, 23, 24) (RECOMMENDED)
MAX WIRE OD: 3.00mm
- MATING PART NUMBER: SEE TABLE 2
- PART SATISFIES USCAR-2, REV. 5, NOVEMBER 2007, (T2/V1/S1/MF3)
- PART TO COMPLY WITH YPES-31-038 REQUIREMENTS.
- THIS DIMENSION SHOWS THE PRE-SET POSITION OF THE TPA.
- THIS DIMENSION SHOWS THE PRE-SET POSITION OF THE CPA.
- THIS DRAWING IS TO BE USED FOR INTERNAL YAZAKI PSW SUBMISSION.
- HANDLING MANUAL NUMBER: YPES-15-1321E

DATE	REVISION RECORD	NO.	CHKD
01-19-2023	UPDATED APPLICABLE 0.64 TERMINAL & ADDED PANEL MATING NUMBERS	C23-A030	E.T.
11-13-2019	UPDATED APPLICABLE 0.64 TERMINAL	C19-A996	A.C.
09-18-2019	REDRAWN, ADDED KEYWAY B & CPA CONFIGURATIONS	C19-A832	A.C.
09-18-2012	REVISED NOTES	C12-A789	MMR
11-02-2011	NEW	C11-A868	M.R.

GENERAL TOLERANCE										
	10MAX	50MAX	100MAX	250MAX	250OVR	R5 MAX	R10 MAX	R20 MAX	R20 OVR	ANGLE
A	±0.15	±0.2	±0.3	±0.5	±0.75					±3°
B	±0.2	±0.3	±0.55	±0.95	±1.4	±0.2	±0.3	±0.5	±2.5	±3°
C	±0.3	±0.5	±0.8	±1.4	±2					±3°

CUSTOMER PART NO.	CUSTOMER DWG NO.	MATL SPEC.	SEE TABLE	TREAT. & FIN.	N/A
OFFICE YNA	TRIAL PART NO.	NAME	24P (18P GEN Y 0.64 + 2P YESC 1.5 + 4P YESC 2.8)		
VENDOR			UNSEALED FEMALE CONNECTOR SUB-ASSEMBLY		
VENDOR NO.		PART NO.	7287-3260-30, ETC.		
DWG TYPE	DWG SOURCE	DWG DATE	UNIT	SCL	ANGLE
R	7287-3260-30/M	11-02-2011	mm	2/1	3
APPROVED	CHECKED	CHECKED	DESIGN	DRAWN	PART NO. CH. CODE
			JUSTIN GERWATOWSKI	ERICK TREVIZO	7287-3260-30:R
			01-17-2008	01-19-2023	DWG NO. SET DWG NO. (1/1)
					YAZAKI CORPORATION

Mouser Electronics

Authorized Distributor

Click to View Pricing, Inventory, Delivery & Lifecycle Information:

[Yazaki:](#)

[7289547560](#) [7287326060](#) [7289547530](#) [7287326030](#) [7298371540](#) [7298337340](#)