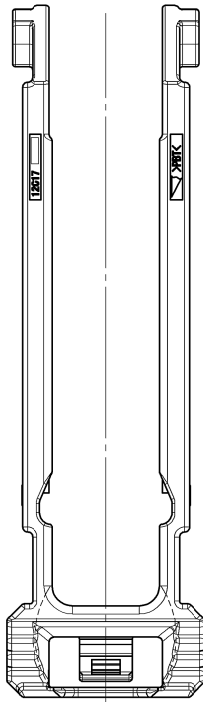


GENERAL TOLERANCE											
	10 MAX	50 MAX	100 MAX	250 MAX	250 OVR	R5 MAX	R10 MAX	R20 MAX	R20 OVR	ANGLE	ECCENT
A	±0.15	±0.2	±0.3	±0.5	±0.75					±3°	0.1
B	±0.2	±0.3	±0.55	±0.95	±1.4	±0.2	±0.3	±0.5	±2.5	±3°	0.1
◎	±0.3	±0.5	±0.8	±1.4	±2					±3°	0.15



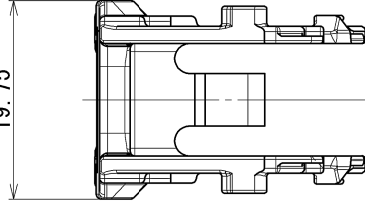
注記

- △1. 取り付け可能部品No.: 7289-4104-40(7089-4104-40)
- 2. 取扱説明書No.: YPES-15-1469
- △3. ( )内の品番はA/B回路及び特別管理回路に使用すること。

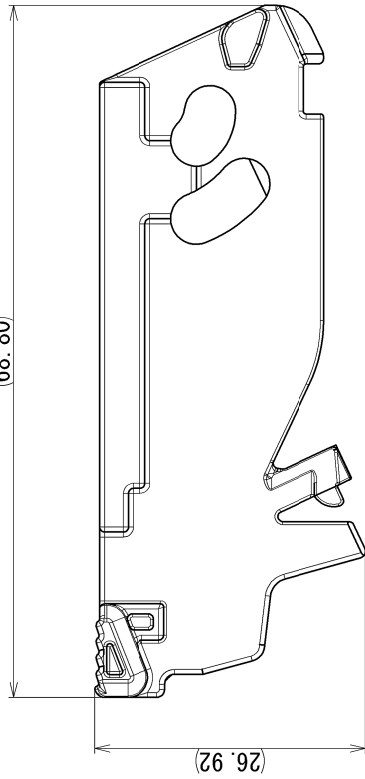
NOTES

- △1. INSTALL PART NO.: 7289-4104-40(7089-4104-40)
- 2. HANDLING MANUAL NO.: YPES-15-1469
- △3. PART NUMBERS IN PARENTHESIS SHALL BE USED FOR AIR BAG (A/B) CIRCUITS AND OTHER CIRCUITS DESIGNATED FOR SPECIAL MONITORING.

19.75



(68.80)



MATERIAL SPEC.		PBT (BLACK)		TREAT. & FIN.		ISSUE MARK	
NAME	0.64 II 38P+1.5 25P HYBRID LEVER						
PART NO.	△ 7173-2947-30, A (7B73-2947-30, A)					SET DWG NO.	
CH. CODE	△						
DWG NO.	7173-2947-30:R						
YAZAKI CORPORATION							
CUSTOMER	CUSTOMER PART NO.		CUSTOMER DWG NO.				
2016/07/27	C16-Y135		T. T				
2015/01/09	C14-Z781		D. D				
LET	DATE		REVISION RECORD		NO.		
			CHKD				
GENERAL TOLERANCE							
10MAX	50MAX	100MAX	250MAX	250OVR	ANGLE	ECCENT	
±0.15	±0.2	±0.3	±0.5	±0.75	±30'	0.1	
±0.2	±0.3	±0.55	±0.95	±1.4	±30'	0.1	
±0.3	±0.5	±0.8	±1.4	±2	±30'	0.15	
SPECIFIED							
VENDOR NO.							
DWG TYPE		DWG SOURCE		DWG DATE		UNIT	
R		NEW		2015/01/09		mm	
APPROVED		CHECKED		DESIGN		DRAWN	
S. SUZUKI		M. NAGANO		K. KAWASHIMA		T. TORINOUMI	
2016/07/27		2016/07/27		2014/03/27		2016/07/27	

# Mouser Electronics

Authorized Distributor

Click to View Pricing, Inventory, Delivery & Lifecycle Information:

[Yazaki:](#)

[7173294730](#)