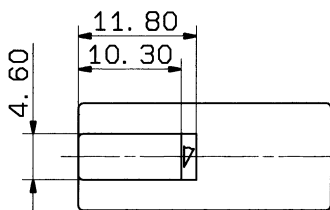
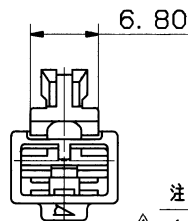
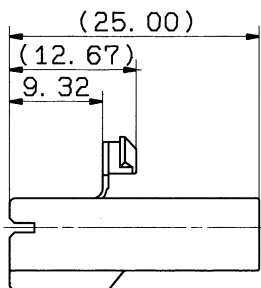
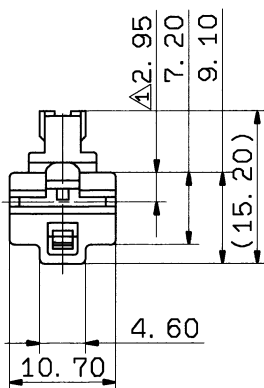
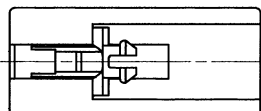


1

2

3

YAZAKI PART NO.	COLOR
7123-2511	NATURAL
7123-2511-10	DARK GRAY
7123-2511-30	BLACK
7123-2511-40	LIGHT GRAY
7123-2511-50	RED
7123-2511-60	GREEN
7123-2511-70	YELLOW
7123-2511-80	BROWN
7123-2511-90	BLUE



注記

△ 1. 適用端子番: 7116-2783, 7116-2784, 7116-2796-02

NOTE

△ 1. APPLICABLE TERMINAL NO. : 7116-2783, 7116-2784, 7116-2796-02

ISSUE MARK

△	95. 11. 14	ADDED APPLICABLE TERMINAL NO.	C95-M668	Y. Y	CUSTOMER		MATL. SPEC.	POLYAMIDE	TREAT. & FIN.						
	93. 01. 25	NEW	C93-L059	K. S	CUSTOMER PART NO.	CUSTOMER DWG NO.									
LET	DATE	REVISION RECORD	NO.	CHKD	OFFICE	TRIAL PART NO.									
					VENDOR										
					VENDOR NO.										
					DWG TYPE	DWG SOURCE	DWG DATE	UNIT	SCL	ANGLE					
A	±0.15	±0.2	±0.3	±0.5	±0.75	±30'	0.1	R	NEW	93. 01. 25	mm	2/1	3	PART NO.	7123-2511 ETC.
B	±0.2	±0.3	±0.55	±0.95	±1.4	±30'	0.1	APPROVED	CHECKED	CHECKED	DESIGN	DRAWN	DWG NO.	7123-2511:R	
©	±0.3	±0.5	±0.8	±1.4	±2	±30'	0.15				IKEDA	Y. OHKUBO			
SPECIFIED					MASS										YAZAKI CORPORATION
					0.9 g										

1

2

3

Mouser Electronics

Authorized Distributor

Click to View Pricing, Inventory, Delivery & Lifecycle Information:

[Yazaki:](#)

[71232511](#) [7123251130](#)