

1

2

3

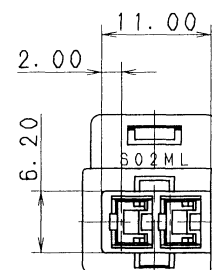
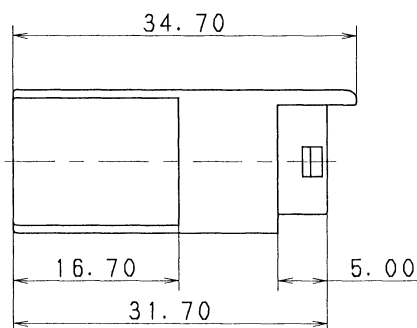
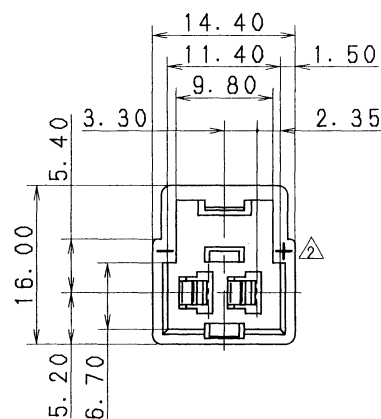
NO.	YAZAKI PART NO.	COLOR
1	7122-1629-90	BLUE
2	7122-1629-30	BLACK

## 注 記

1. 適用端子品番: 7114-1230 ETC.
2. 嵌合相手品番: 7123-1629-90 ETC.
3. 適用リヤホルダ品番: 7157-6022-90 ETC.

## △ NOTES

1. APPLICABLE TERMINAL NO. : 7114-1230 ETC.
2. MATING PART NO. : 7123-1629-90 ETC.
3. APPLICABLE REAR HOLDER NO. : 7157-6022-90 ETC.



ISSUE MARK

△	96.09.30	ADDED PART NO.	C96-M819	H. K	CUSTOMER		MATL. SPEC. NYLON 6		TREAT. & FIN.					
△	90.04.18	ADDED STAMPING	C90-6352	H. Y	CUSTOMER PART NO.		CUSTOMER DWG NO.							
△	90.02.09	RENEW	C90-L047	M. K	OFFICE		TRIAL PART NO.		NAME △S TYPE CONNECTOR					
LET	DATE	REVISION RECORD	NO.	CHKD	VENDOR				HOUSING 2PM(L)					
GENERAL TOLERANCE					VENDOR NO.									
	10MAX	50MAX	100MAX	250MAX	2500VR	ANGLE	ECCENT	DWG TYPE	DWG SOURCE	DWG DATE	UNIT	SCL	ANGLE	PART NO.
A	±0.15	±0.2	±0.3	±0.5	±0.75	±30'	0.1	R	RENEW	83.03.04	mm	2/1	3	△7122-1629-90 ETC.
B	±0.2	±0.3	±0.55	±0.95	±1.4	±30'	0.1	APPROVED	CHECKED	CHECKED	DESIGN	DRAWN		DWG NO.
◎	±0.3	±0.5	±0.8	±1.4	±2	±30'	0.15	神田		渡辺	INABA	MOTOHASHI	一ノ木	△7122-1629-90:R
SPECIFIED					MASS g		96.10.4		96.10.3		83.03.03		96.09.30	
													YAZAKI CORPORATION	

1

2

3

# Mouser Electronics

Authorized Distributor

Click to View Pricing, Inventory, Delivery & Lifecycle Information:

[Yazaki:](#)

[7122162990](#)