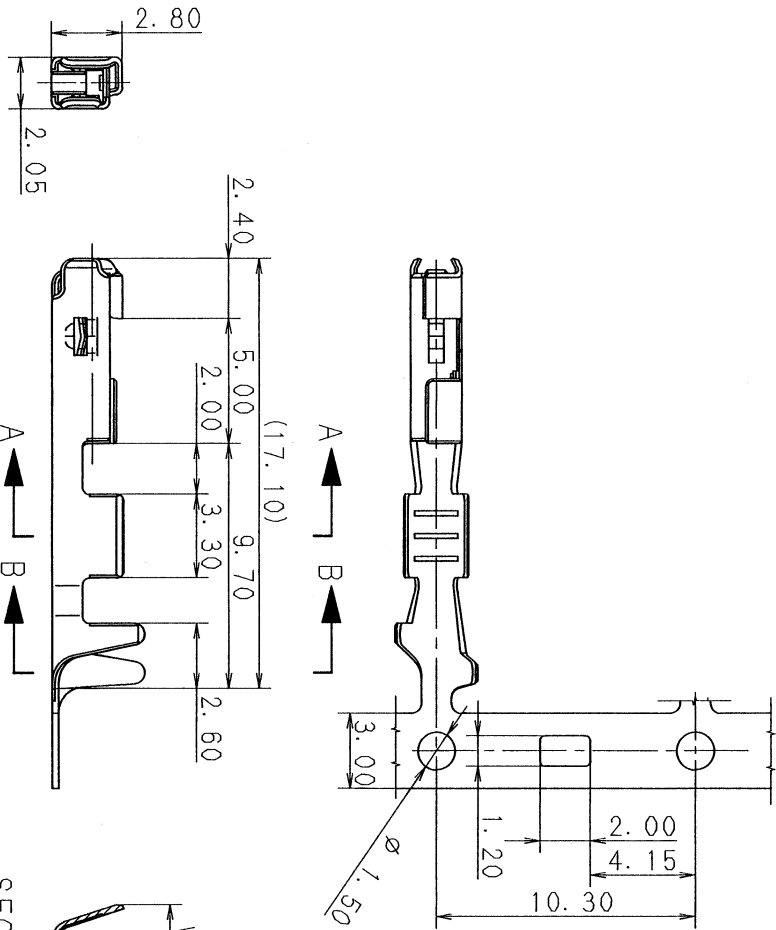


PART NO.	W ₁	W ₂	(H ₁)	(H ₂)	APPLICABLE WIRE SIZE
7116-4765-02	2.60	3.30	2.84	3.69	CAVS 0.85 ~ CAVS 1.25 AVSS 0.75f ~ AVSS 1.25f
7116-4766-02	2.20	2.85	2.30	3.16	CAVS 0.3 ~ CAVS 0.5 AVSS 0.3f ~ AVSS 0.5f

注記
1. 相手端子品番 : 7114-4660-02 ETC.

NOTE
1. MATING PARTS NO. : 7114-4660-02 ETC.



01.09.14 NEW			C01-X870			S. K			OFFICE		
REVISION RECORD			NO.			CHKD			VENDOR NO.		
LET DATE			GENERAL TOLERANCE			DWG. TYPE			VENDOR NO.		
10MAX 50MAX 100MAX 250MAX 2500VFR			ANGLE			ECCENT			MATERIAL		
A ±0.15 ±0.2 ±0.3 ±0.5 ±0.75 ±30°			0.1			NEW			COPPER ALLOY t=0.25		
B ±0.2 ±0.3 ±0.55 ±0.95 ±1.4 ±30°			0.1			APPROVED			TREAT.		
C ±0.3 ±0.5 ±0.8 ±1.4 ±2 ±30°			0.15			CHECKED			& FIN.		
SPECIFIED			MASS			APPROVED			NAME		
			g			加藤 孝太郎			0.64 TERMINAL FEMALE (本物電線用)		
						01.09.17			YAZAKI CORPORATION		

1
2
3

Mouser Electronics

Authorized Distributor

Click to View Pricing, Inventory, Delivery & Lifecycle Information:

[Yazaki:](#)

[7116476602](#) [7116476502](#)