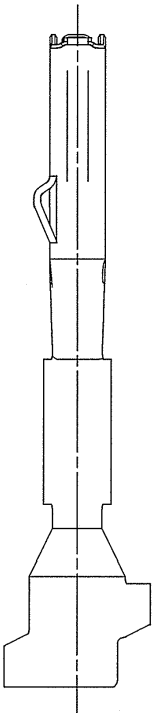
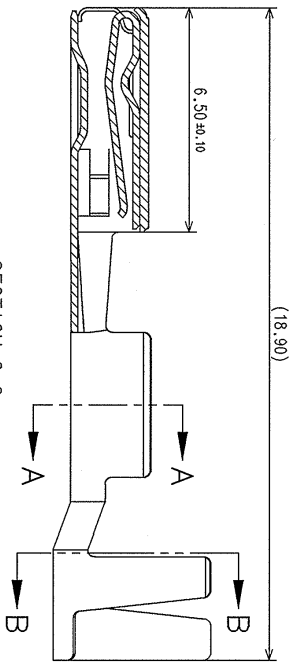
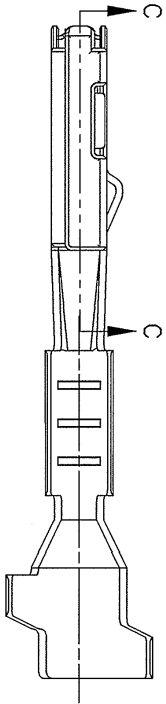
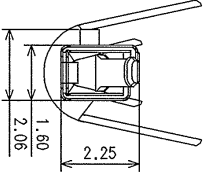
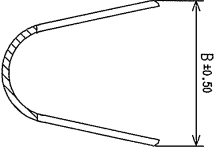
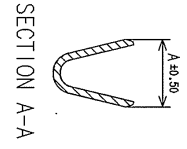


PART NUMBER	APPLICABLE WIRE SIZE		GRIP DIMENSIONS	
	AWG	mm <sup>2</sup>	INSULATION O.D.	
7116-3703-02	22-20	0.35-0.50	1.50 - 2.40	1.82
7116-3704-02	18	0.80	1.90 - 2.40	1.96
				4.49



- NOTES:
1. PARTS MUST BE PURCHASED FROM YAZAKI.
  2. PARTS MUST BE FREE OF BURRS AND SHARP EDGES THAT MAY BE DETRIMENTAL TO SATISFACTORY ASSEMBLY, SAFE HANDLING, OR FUNCTION OF THE PART.
  3. APPLICABLE WIRE SEAL NUMBER: SEE 7158-3504-80-R DRAWING
  4. MATERIAL: COPPER ALLOY
  5. PLATING TREATMENT: 7116-3703-02 - (SN) TIN PLATED ALL OVER
  6. GRIP CODE WILL NOT APPEAR ON THE PART.
  7. PART DESIGNED TO SATISFY USCAR-2, REVISION 3, DATED APRIL 2001.
  8. PART TO COMPLY WITH IPSS-31-008 REQUIREMENTS.
  9. THIS DRAWING IS TO BE USED FOR INTERNAL YAZAKI PSM SUBMISSION.

LETI DATE	REVISION RECORD	NO.	CHKD
	NEW	C09-A091	MMR
02.03.09			

GENERAL TOLERANCE	
10 MAX	50 MAX
100 MAX	250 MAX
250 MAX	500 MAX
ANGLE	ECCENT
$\pm 0.15$	$\pm 0.2$
$\pm 0.3$	$\pm 0.5$
$\pm 0.2$	$\pm 0.3$
$\pm 0.5$	$\pm 0.55$
$\pm 0.3$	$\pm 0.95$
$\pm 0.5$	$\pm 1.4$
$\pm 0.8$	$\pm 1.4$
$\pm 1.4$	$\pm 2$
WEIGHT	$\pm 1.5$

CUSTOMER PART NO.	YMA	CUSTOMER DWG NO.	X30316-8984, ETC.
OFFICE	YMA	TRIAL PART NO.	
VENDOR NO.			
DWG TYPE	7116-3703-02-1A	DWG SOURCE	02.03.09
ANGLE	10/71	UNIT	3
ECCENT	0.1	MM	10/71
APPROVED		CHECKED	
DESIGN	089	DESIGN	089
OSIERRART	12.14.04	DATE	02.03.09
MATL. SPEC.	SEE NOTES	TREAT & FIN.	
NAME	0.64 KAIZEN SEALED FEMALE TERMINAL		
PART NO.	7116-3703-02 ETC.		
DWG NO.	7116-3703-02.R		
YAZAKI CORPORATION			

# Mouser Electronics

Authorized Distributor

Click to View Pricing, Inventory, Delivery & Lifecycle Information:

[Yazaki:](#)

[7116370302](#) [7116370402](#)