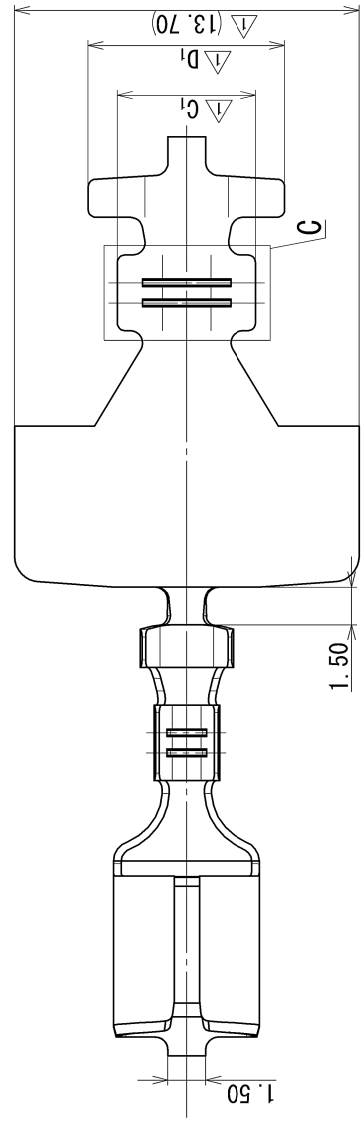
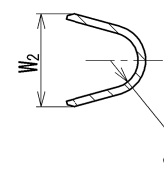
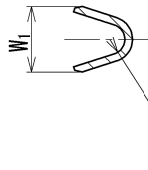
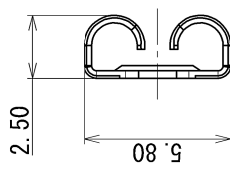


PART NO. AND CH. CODE	R ₁	W ₁	R ₂	W ₂	A ₁	B ₁	△C ₁	△D ₁	WIRE SIZE	MATERIAL & PLATING
7116-1687-02	0.60	2.60	1.10	3.70	3.00	6.20	5.50	7.80	△ CIVUS 0.35 ~ CIVUS 0.75 CAVS 0.30 ~ CAVS 0.85 AVS 0.30 ~ AVS 0.85	COPPER ALLOY (t=0.30) TIN PLATING
7116-1688-02	1.00	3.80	1.60	5.20	4.00	7.20	8.40	△ CAVS 1.25 AVSS 2.00		
△ 7196-0513-02	0.60	2.60	0.95	3.70	3.00	6.20	5.30	AVS 1.25 ~ AVS 2.00 EQUIVALENT		
△ 7196-0514-02	0.70	3.14	0.70	4.20	3.00	6.20	6.80	CHIFUS 0.75 ~ AVSS 1.25 EQUIVALENT		
△ 7196-0517-02	1.00	3.80	1.60	5.20	4.00	7.20	8.40	CAVS 1.25 ~ AVS 2.00 EQUIVALENT		



注記

△ 1.取扱説明書No. YPES-15-219

NOTE

△ 1. HANDLING MANUAL NO. YPES-15-219

LET	DATE	REVISION RECORD	NO.	CHKD	Y. Y	Y. S	Y. H
△ 3	2017/03/31	ADDED WIRE SIZE	C17-P075				
△ 2	2015/09/02	ADDED PART NO., ETC.	C15-Z255		J. L		
△ 1	2000/11/23	CHANGED WIRE SIZE & ADDED DIMENSION	C00-M543		Y. S		
	1995/12/08	NEW	C95-M660		Y. Y		
GENERAL TOLERANCE							
	10MAX	50MAX	100MAX	250MAX	2500VR	ANGLE	ECCENT
A	±0.15	±0.2	±0.3	±0.5	±0.75	±30'	O. 1
B	±0.2	±0.3	±0.55	±0.95	±1.4	±30'	O. 1
③	±0.3	±0.5	±0.8	±1.4	±2	±30'	O. 15
SPECIFIED MASS							
g							

MATL. SPEC.	SEE TABLE	TREAT. & F.IN.	ISSUE MARK
CUSTOMER	CUSTOMER PART NO.	CUSTOMER DWG NO.	
OFFICE		TRIAL PART NO.	
VENDOR			
NAME △ 4.8 TERMINAL FEMALE			
PART NO. 7116-1687-02 ETC.			
CH. CODE			
DWG NO. 7116-1687-02:R			
SET DWG NO.			
YAZAKI CORPORATION			



Mouser Electronics

Authorized Distributor

Click to View Pricing, Inventory, Delivery & Lifecycle Information:

[Yazaki:](#)

[7116168802](#) [7116168702](#)