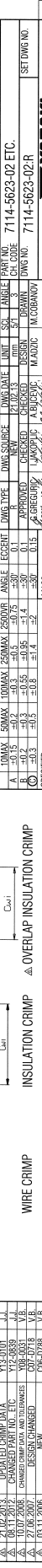
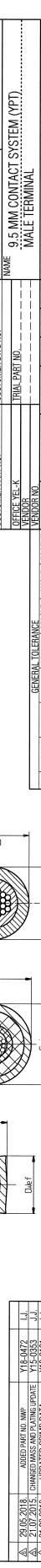
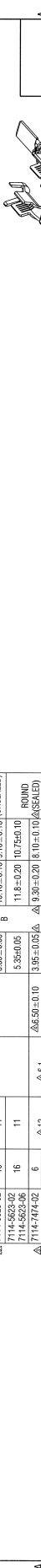
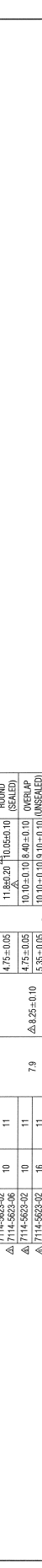
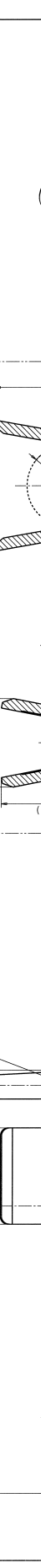
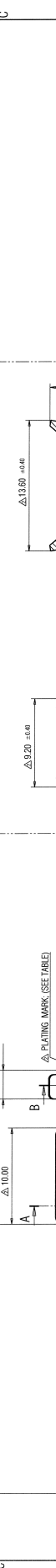
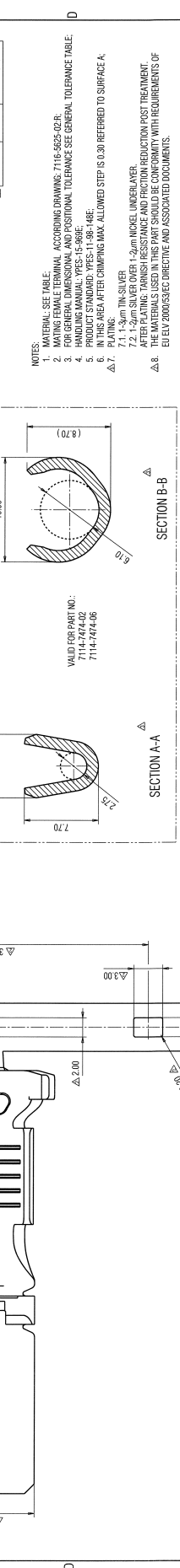


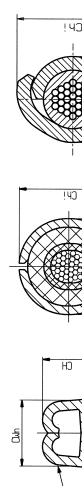
| WIRE SIZE (mm ²) | PART NUMBER | MASS (g) | PLATING MARK | MATERIAL |
|------------------------------|--------------|----------|--------------|----------|
| △ 10-16 | 7114-5623-02 | △ 6.06 | △ S | △ CuSn |
| △ 10-16 | 7114-5623-06 | △ 6.06 | △ S | △ CuNiSi |
| △ 4-6 | 7114-7474-02 | △ 5.32 | △ S | △ CuSn |
| △ 4-6 | 7114-7474-06 | △ 5.32 | △ L | △ CuSn |

| INSULATION DIAMETER (mm) | WIRE SIZE (mm) | APPLICABLE CWS |
|--------------------------|----------------|----------------|
| 7.3-8.3 | 16 | 7158-3673-90 |
| 6.2-7.3 | 16 | 7158-3672-50 |
| 5.4-6.5 | 10 | 7158-3713-70 |
| 3.4-4.3 | 4-6 | 7172-5184 |

NOTES:
 1. MATERIAL SEE TABLE.
 2. MATING FEMALE TERMINAL ACCORDING DRAWING 7116-5623-02R.
 3. FOR GENERAL DIMENSIONAL AND POSITIONAL TOLERANCE SEE GENERAL TOLERANCE TABLE.
 4. HANDLING MANUAL: TYPES 15-898E.
 5. FINISH AND TYPES: 11-961-146E.
 6. FINISH SPEC. AFTER CRIMPING MARK: ALLOWED STEP 0.030 REFERRED TO SURFACE A.
 7. 1-3μm TIN SILVER
 7.2 1-2μm SILVER OVER 1-2μm NICKEL UNDER LAYER.
 8. FINISH SPEC. AFTER STRIPPING AND PRE-CRIMPING POST TREATMENT.
 9. FINISH SPEC. AFTER STRIPPING AND PRE-CRIMPING POST TREATMENT WITH REQUIREMENTS OF JIS S 2000S3EC DIRECTIVE AND ASSOCIATED DOCUMENTS.



| PART NUMBER | WIRE SIZE (mm ²) | HEIGHT (mm) | WIRE CRIMP | | INSULATION CRIMP | |
|--------------|------------------------------|-------------|--------------------|-------------|------------------|-------------|
| | | | NOMINAL WIDTH (mm) | HEIGHT (mm) | WIDTH (mm) | HEIGHT (mm) |
| 7114-5623-02 | 10 | 11 | 7.9 | 4.75±0.05 | 11.840±0.10 | 10.05±0.10 |
| 7114-5623-06 | 10 | 11 | 7.9 | 4.75±0.05 | 10.10±0.10 | 8.40±0.10 |
| 7114-5623-02 | 16 | 11 | 7.9 | 5.35±0.05 | 10.10±0.10 | 9.10±0.10 |
| 7114-5623-02 | 16 | 11 | 7.9 | 5.35±0.05 | 11.8±0.20 | 10.75±0.10 |
| 7114-7474-02 | 6 | 8 | 6.1 | 5.85±0.05 | 8.20±0.20 | 8.10±0.10 |
| 7114-7474-06 | 4 | 12 | 6.1 | 5.85±0.05 | 8.20±0.20 | 7.80±0.10 |



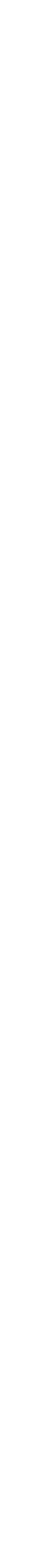
| REV. | DATE | DESCRIPTION | BY | CHKD |
|------|------------|--------------------------|----------|------|
| 1 | 20.05.2018 | ISSUED PART NO. NEW | Y12-0472 | J.L. |
| 2 | 21.02.2013 | CHANGED PART NO. POSTIVE | Y12-0101 | J.L. |
| 3 | 08.11.2012 | CHANGED CRIMP DATA | Y12-0839 | J.L. |
| 4 | 27.06.2007 | CHANGED PART NO. ETC | Y12-0153 | J.L. |
| 5 | 27.06.2007 | CHANGED PART NO. ETC | Y12-0153 | J.L. |
| 6 | 03.11.2006 | DESIGN/CHANGED | Y12-0153 | J.L. |
| 7 | 03.11.2006 | NEW | Y12-0153 | J.L. |

| REVISION RECORD | NO. | CHKD |
|-----------------|-----|------|
| 20.05.2018 | 1 | J.L. |
| 21.02.2013 | 2 | J.L. |
| 08.11.2012 | 3 | J.L. |
| 27.06.2007 | 4 | J.L. |
| 27.06.2007 | 5 | J.L. |
| 03.11.2006 | 6 | J.L. |
| 03.11.2006 | 7 | J.L. |

| CUSTOMER | CUSTOMER PART NO. | OFFICE | YEL-K | MODEL | REVISION | DATE | MASS | REF. MARK |
|----------|-------------------|--------|--------|--------|----------|--------|--------|-----------|
| YAZAKI | 7114-5623-02 | YAZAKI | YAZAKI | YAZAKI | YAZAKI | YAZAKI | YAZAKI | YAZAKI |

| GENERAL DIMENSIONS | UNIT | SCALE | REVISION | DATE | MASS | REF. MARK |
|--------------------|----------|----------|----------|----------|----------|-----------|
| 10MAX. L | 10MAX. L | 10MAX. L | 10MAX. L | 10MAX. L | 10MAX. L | 10MAX. L |

| MAIL SPEC. | SEE NOTES | TREAT & FIN. | SEE NOTES |
|-----------------------------|-----------------------------|-----------------------------|-----------------------------|
| 9.5 MM CONTACT SYSTEM (PPT) | 9.5 MM CONTACT SYSTEM (PPT) | 9.5 MM CONTACT SYSTEM (PPT) | 9.5 MM CONTACT SYSTEM (PPT) |



Mouser Electronics

Authorized Distributor

Click to View Pricing, Inventory, Delivery & Lifecycle Information:

[Yazaki:](#)

[7114747406](#) [7114747402](#)