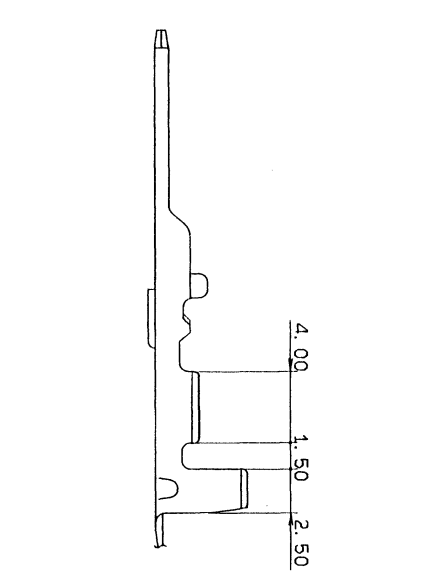


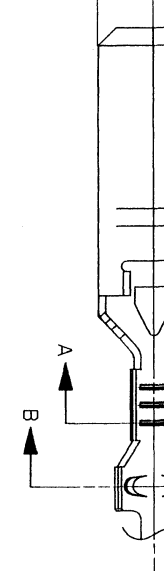
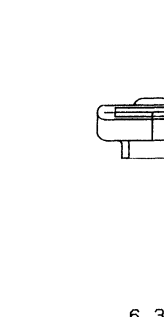
LET	DATE	REVISION RECORD	NO.	CHKD
	90.09.07	NEW	390-L1976 M. K	

GENERAL TOLERANCE									
10MAX	15MAX	100MAX	250MAX	250OVR	ANGLE	ECCENT			
A ±0.15	±0.2	±0.3	±0.5	±0.75	±30°	0.1			
B ±0.2	±0.3	±0.55	±0.95	±1.4	±30°	0.1			
Ø ±0.3	±0.5	±0.8	±1.4	±2	±30°	0.15			
SPECIFIED							WEIGHT		

CUSTOMER PART NO.	CUSTOMER DWG NO.	MATL. SPEC.	SEE TABLE	TREAT. & FIN.	ISSUE MARK
OFFICE	STDLIB NO.	NAME	M TYPE TERMINAL (M)		
VENDOR NO.	DWG. TYPE	DWG. SOURCE	DWG. DATE	UNIT	SCL. ANGLE
	R	NEW	90.09.07	mm	5/1 3
APPROVED	CHECKED	CHECKED	DESIGN	DRAWN	
11木	11木	11木	SAKAI	T. MAKIITA	
DATE	DATE	DATE	DATE	DATE	
90.09.07	90.09.07	90.09.07	82.08.02	90.09.07	
YAZAKI CORPORATION					



PART NO.	C	D	MATERIAL	TREAT & FIN.	APPLICABLE WIRE SIZE
7114-2870	2.7	4.5			AV 0.5 AVS 0.3~0.5
7114-2870-02	2.7	4.5	C2680 t=0.4	TIN PLATED	AV 0.5 AVS 0.3~0.5
7114-2871	3.7	5.5			AV 0.95~2 AVS 0.85~2
7114-2871-02	3.7	5.5		TIN PLATED	AV 0.95~2 AVS 0.85~2
7114-2872	4.7	6.5			AV 3. AVS 3
7114-2872-02	4.7	6.5		TIN PLATED	AV 3. AVS 3



10MAX	15MAX	100MAX	250MAX	250OVR	ANGLE	ECCENT
A ±0.15	±0.2	±0.3	±0.5	±0.75	±30°	0.1
B ±0.2	±0.3	±0.55	±0.95	±1.4	±30°	0.1
Ø ±0.3	±0.5	±0.8	±1.4	±2	±30°	0.15
SPECIFIED						

CUSTOMER PART NO.	CUSTOMER DWG NO.	MATL. SPEC.	SEE TABLE	TREAT. & FIN.	ISSUE MARK
OFFICE	STDLIB NO.	NAME	M TYPE TERMINAL (M)		
VENDOR NO.	DWG. TYPE	DWG. SOURCE	DWG. DATE	UNIT	SCL. ANGLE
	R	NEW	90.09.07	mm	5/1 3
APPROVED	CHECKED	CHECKED	DESIGN	DRAWN	
11木	11木	11木	SAKAI	T. MAKIITA	
DATE	DATE	DATE	DATE	DATE	
90.09.07	90.09.07	90.09.07	82.08.02	90.09.07	
YAZAKI CORPORATION					

PART NO.	C	D	MATERIAL	TREAT & FIN.	APPLICABLE WIRE SIZE
7114-2870	2.7	4.5			AV 0.5 AVS 0.3~0.5
7114-2870-02	2.7	4.5	C2680 t=0.4	TIN PLATED	AV 0.5 AVS 0.3~0.5
7114-2871	3.7	5.5			AV 0.95~2 AVS 0.85~2
7114-2871-02	3.7	5.5		TIN PLATED	AV 0.95~2 AVS 0.85~2
7114-2872	4.7	6.5			AV 3. AVS 3
7114-2872-02	4.7	6.5		TIN PLATED	AV 3. AVS 3

Mouser Electronics

Authorized Distributor

Click to View Pricing, Inventory, Delivery & Lifecycle Information:

[Yazaki:](#)

[71142872](#) [71142870](#) [71142871](#) [7114287002](#) [7114287202](#) [7114287102](#)