

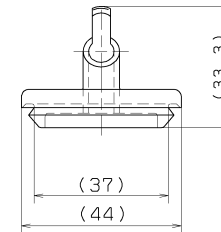
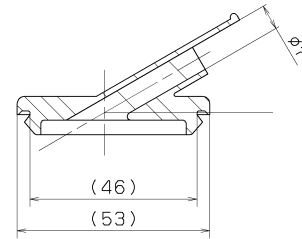
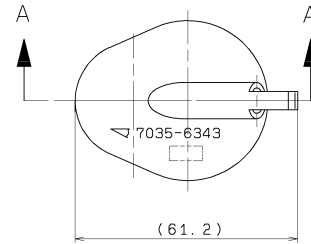
RUBBER PART GENERAL TOLERANCE			
PART DIM.	1	2	③
0 TO 3	± 0.2	± 0.3	± 0.4
3 TO 6	± 0.2	± 0.4	± 0.5
6 TO 10	± 0.3	± 0.5	± 0.6
10 TO 18	± 0.3	± 0.6	± 0.8
18 TO 30	± 0.4	± 0.8	± 1.0
30 TO 50	± 0.5	± 1.0	± 1.5
50 TO 80	± 0.6	± 1.2	± 2.0
80 TO 120	± 0.7	± 1.4	± 2.5
120 TO 180	± 0.8	± 1.6	± 3.0
180 TO 250	± 1.0	± 2.0	± 4.0
250 TO 315	± 1.2	± 2.5	± 5.0
315 TO 400	± 1.5	± 3.0	± 6.0
400 TO 500	± 1.8	± 3.5	± 7.0
500 OVER	± 0.4 %	± 0.8 %	± 1.5 %

注 記

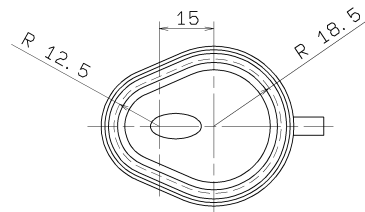
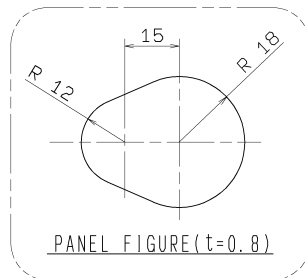
1. 亀裂、気泡及び機能上有害なバリの無き事。

NOTES

1. MUST BE FREE OF FLASH,
BUBBLE AND BURR THAT
AFFECT FUNCTION.



SEC. A-A



ISSUE MARK

CUSTOMER		MATERIAL: EPDM(BLACK)		TREAT. & FIN.	
CUSTOMER PART NO.		CUSTOMER DWG NO.		NAME: GROMMET	
OFFICE		TRIAL PART NO.		VENDOR NO.	
VENDOR		VENDOR NO.		PART NO. 7035-6343	
DWG TYPE: R		DWG SOURCE: NEW		DWG DATE: 11.10.05	
APPROVED		CHECKED		DESIGN	
K. SUZUKI		T. TEZUNA		KATSUYA -SUZUKI	
SPECIFIED		DRAWN		H. NOGUCHI	
MASS: 15 g		11.10.05		92.06.04	
		11.10.05		11.10.05	
		YAZAKI CORPORATION			

GENERAL TOLERANCE							
	10MAX	50MAX	100MAX	250MAX	250OVR	ANGLE	ECCENT
A	±0.15	±0.2	±0.3	±0.5	±0.75	±30'	0.1
B	±0.2	±0.3	±0.55	±0.95	±1.4	±30'	0.15
C	±0.3	±0.5	±0.8	±1.4	±2		

LET	DATE	REVISION RECORD	NO.	CHKD
	11.10.05	NEW	C11-1086	H. N

Mouser Electronics

Authorized Distributor

Click to View Pricing, Inventory, Delivery & Lifecycle Information:

[Yazaki:](#)

[70356343](#)